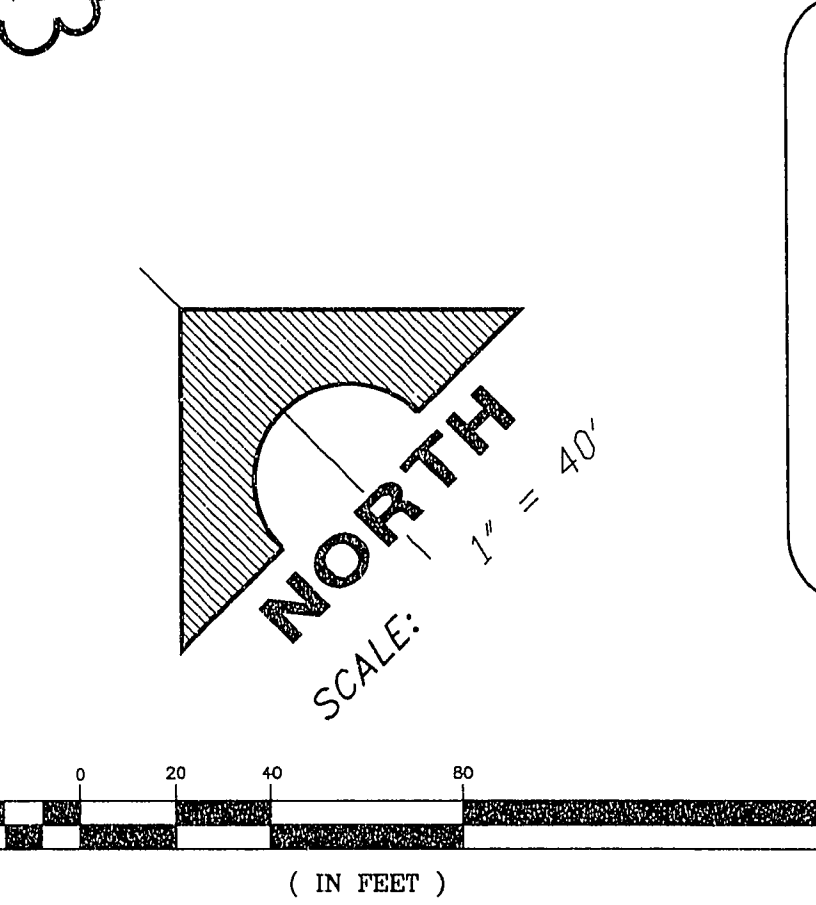
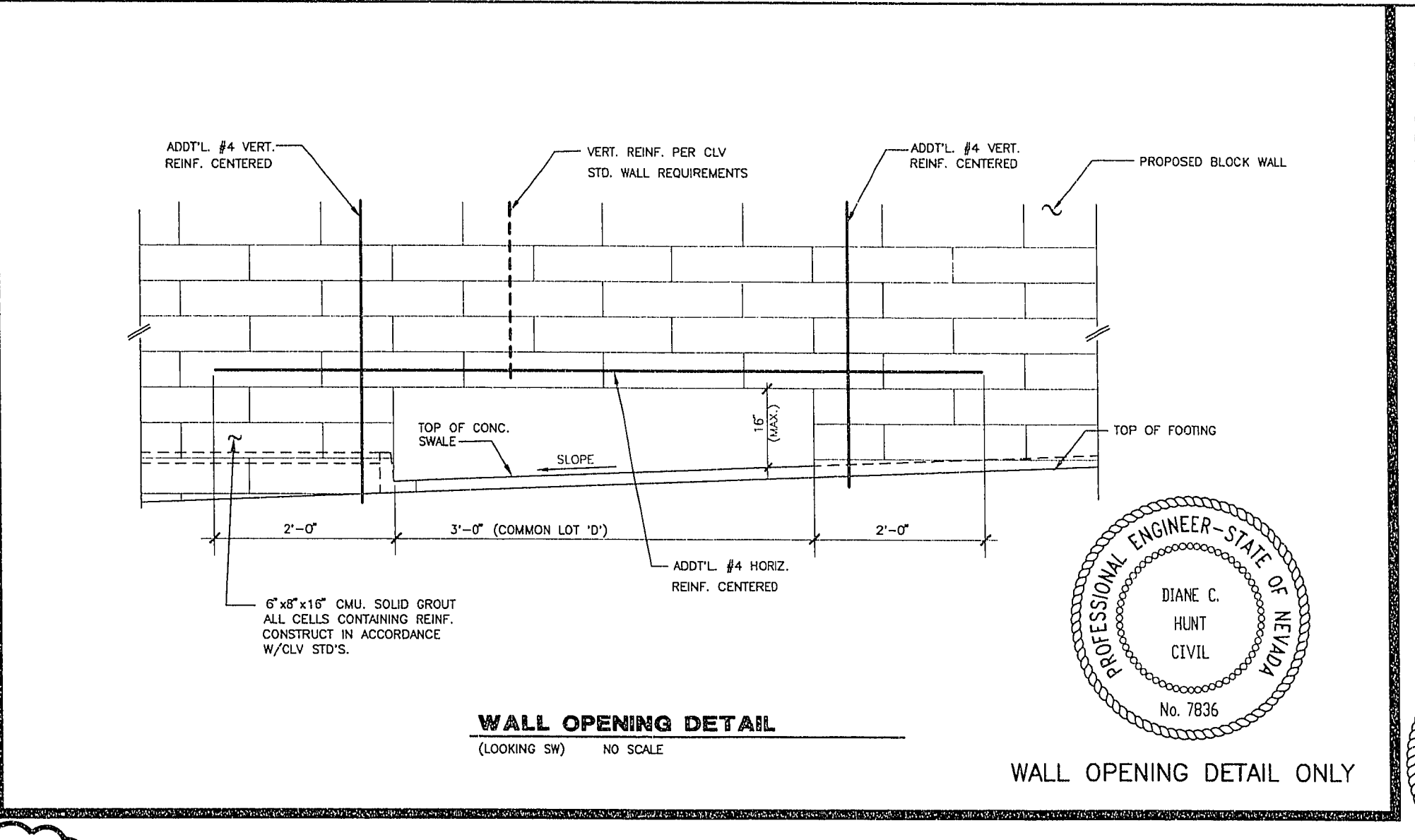


662.5000

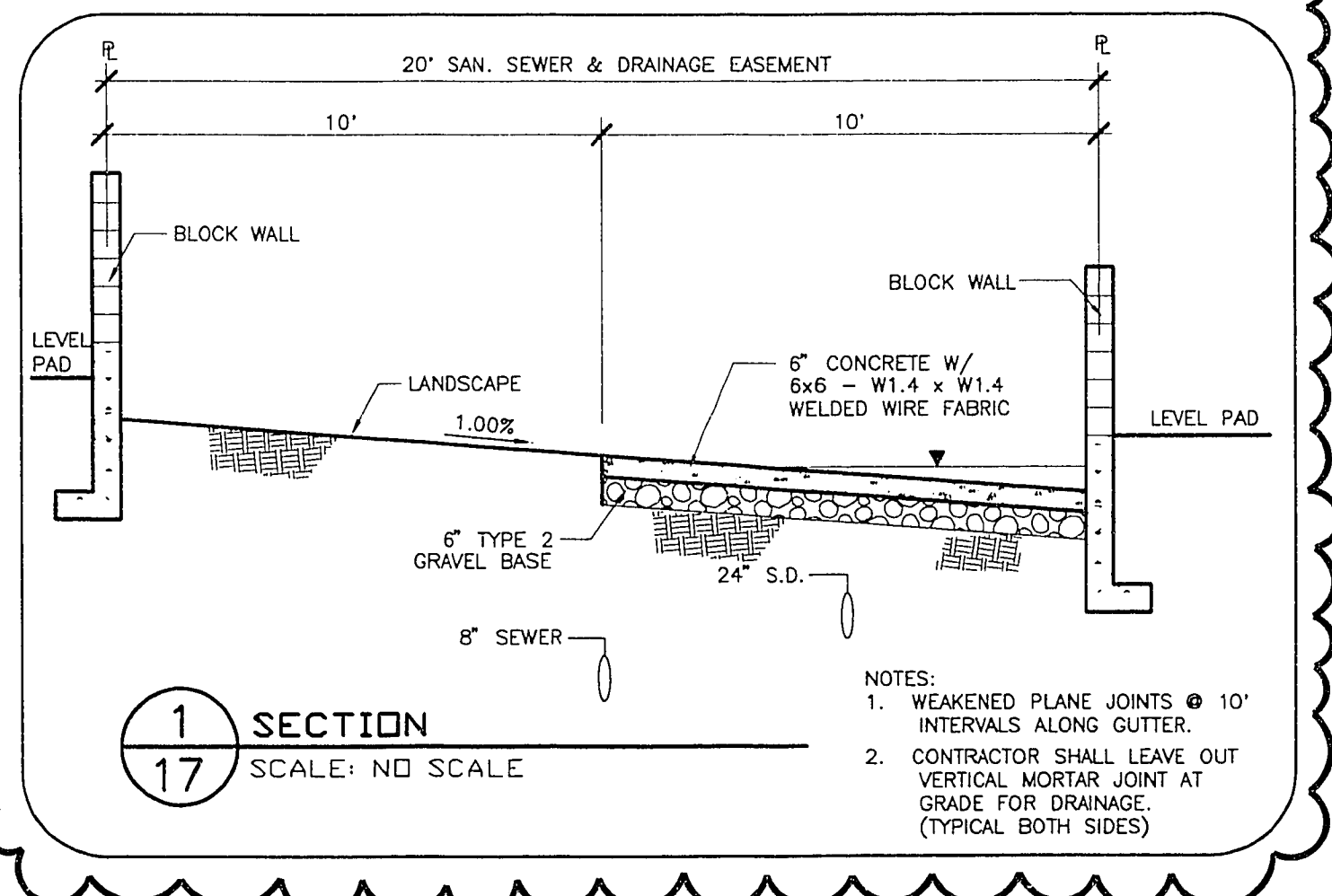
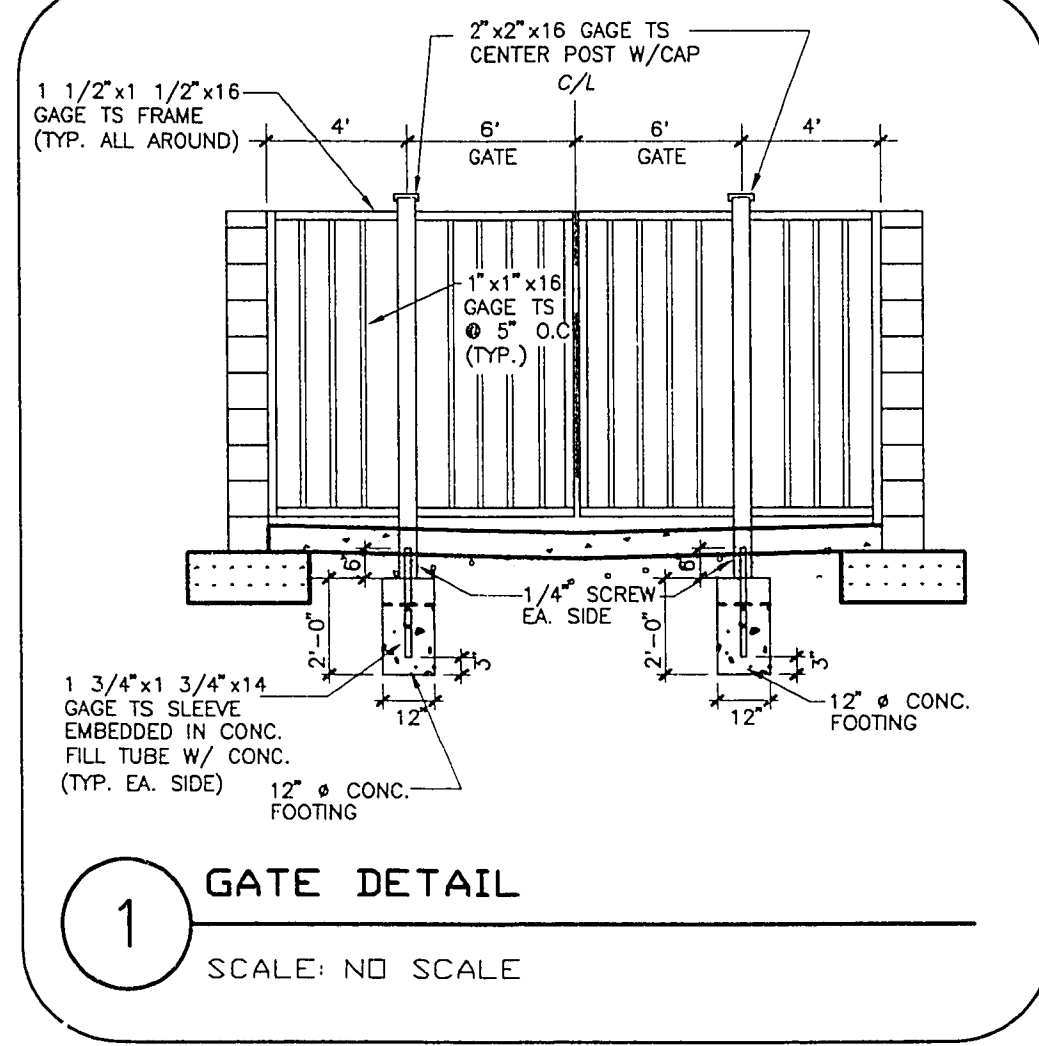
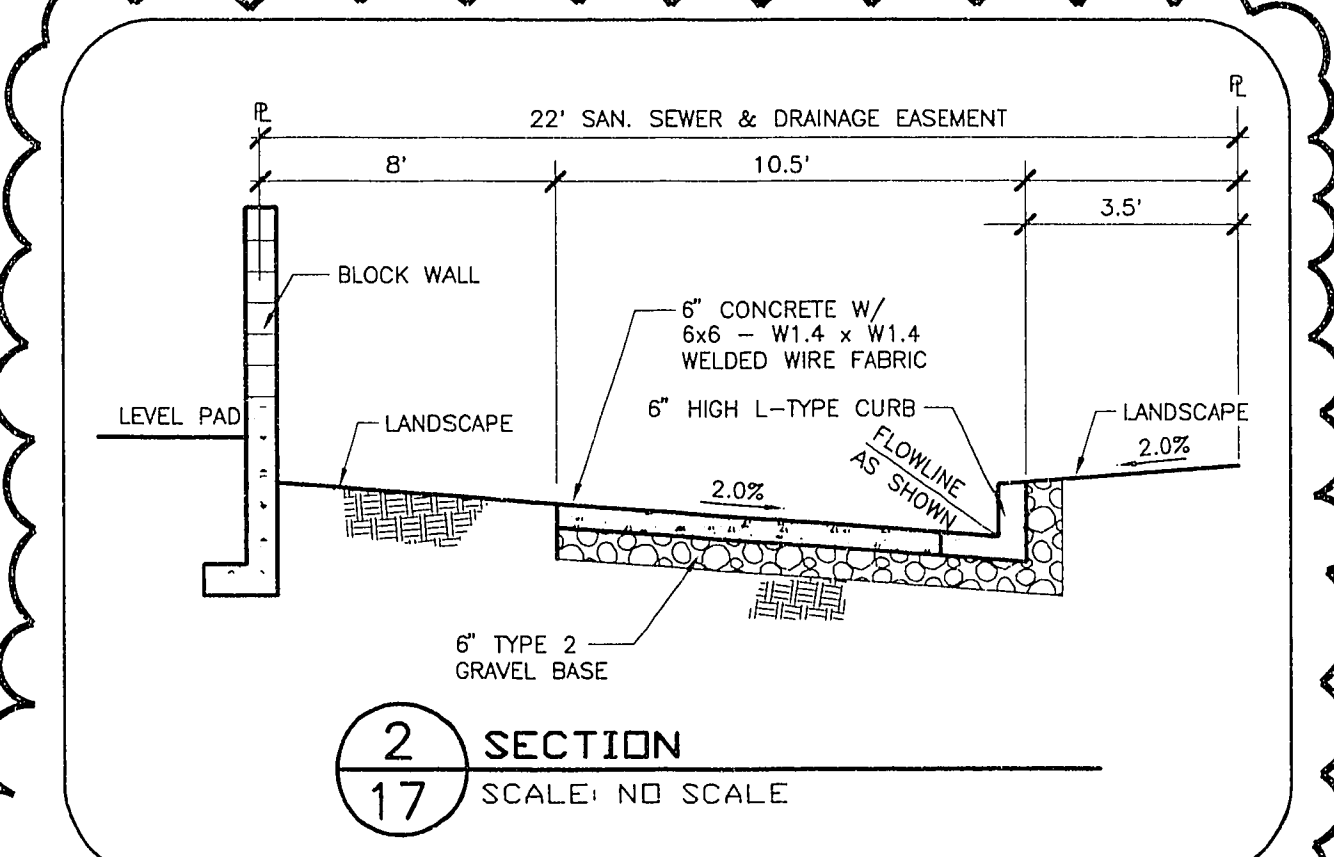
PLOTTED: 07/14/95
QP2.DWG



LEGEND

---	SUBDIVISION BOUNDARY	13	LOT NUMBER
---	EASEMENT LINE	1	BLOCK NUMBER
---	STREET CENTERLINE	BCR	BACK OF CURB RETURN
---	CONCRETE CURB & GUTTER	EX	EXISTING IMPROVEMENTS
---	EXISTING GROUND CONTOUR LINE	FL	FLOW LINE
---	DRAINAGE FLOW LINE	HP	HIGH POINT
---	BLOCK WALL	R/W	RIGHT-OF-WAY
---	EXISTING BLOCK WALL	TC	TOP OF CURB
56.8	PAD ELEVATION	---	PAD SETBACK LINE
▲	RETAINING WALL HEIGHT	---	RETAINING WALL
		---	GRADE BREAK

- WALL NOTES**
- APPROVAL OF THESE PLANS BY THE CITY ENGINEER DOES NOT PERTAIN TO CONSTRUCTION OF NEW WALLS (RETAINING OR NON-RETAINING) OR MODIFICATIONS TO EXISTING WALLS.
 - ALL WALLS, NEW OR EXISTING, ARE REVIEWED BY THE CITY ENGINEER FOR GRADING RELATIONSHIPS ONLY.
 - ALL WALLS, RETAINING AND NON-RETAINING, MUST BE APPROVED AND A PERMIT OBTAINED FROM THE DEPARTMENT OF BUILDING AND SAFETY.
 - FOR SIGHT DISTANCE REQUIREMENTS AT INTERSECTIONS SEE SUMMERLIN DWG. NO. DC-3.



CITY OF LAS VEGAS

PROFESSIONAL ENGINEER - STATE OF NEVADA
DIANE C. HUNT
CIVIL
No. 7836

RECOMMENDED BY:
DON LETER
PROFESSIONAL ENGINEER - STATE OF NEVADA
CIVIL
No. 1174

DATE: 07/14/95
REV. DATE: 07/14/95
REV. DESCRIPTION: 07/14/95 ADJ. SLOPE RETURN AND SCALE 1/16/95

1555 SOUTH BANBURY BLVD., LAS VEGAS, NEVADA 89102
G. C. WALLACE, INC.
Engineering/Architecture

NIGRO ASSOCIATES
SAN MARINO
GRADING PLAN 2

SHEET
17
OF 20 SHEETS

11-20-150 Revised 1074384