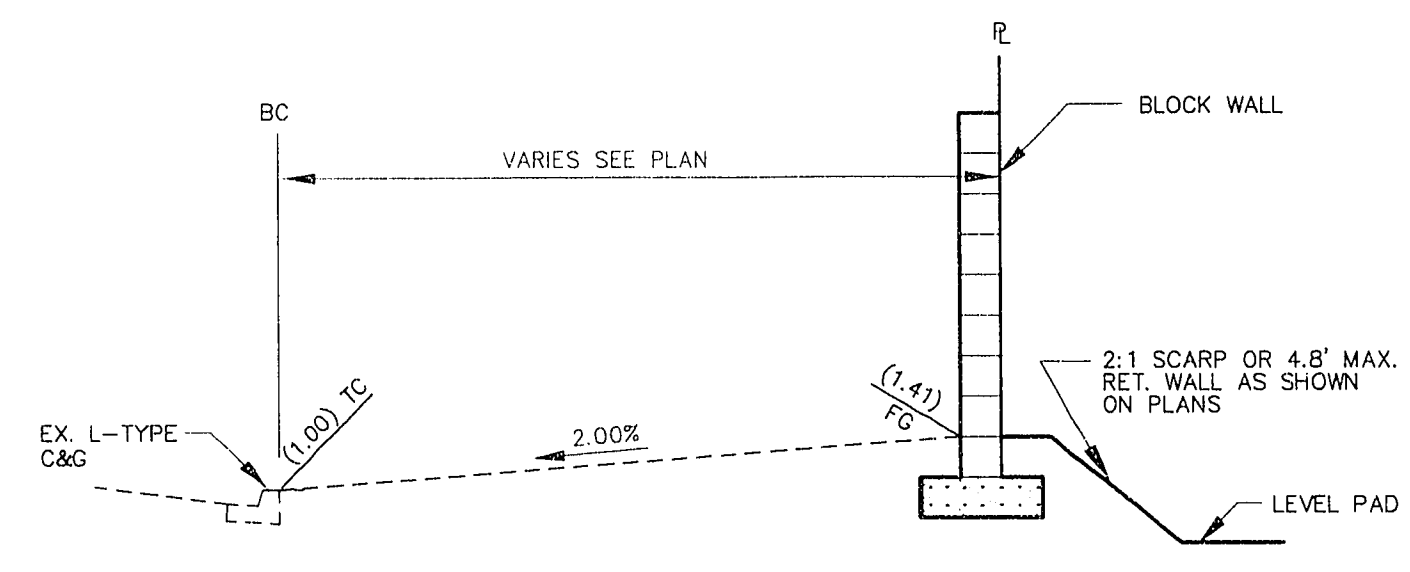
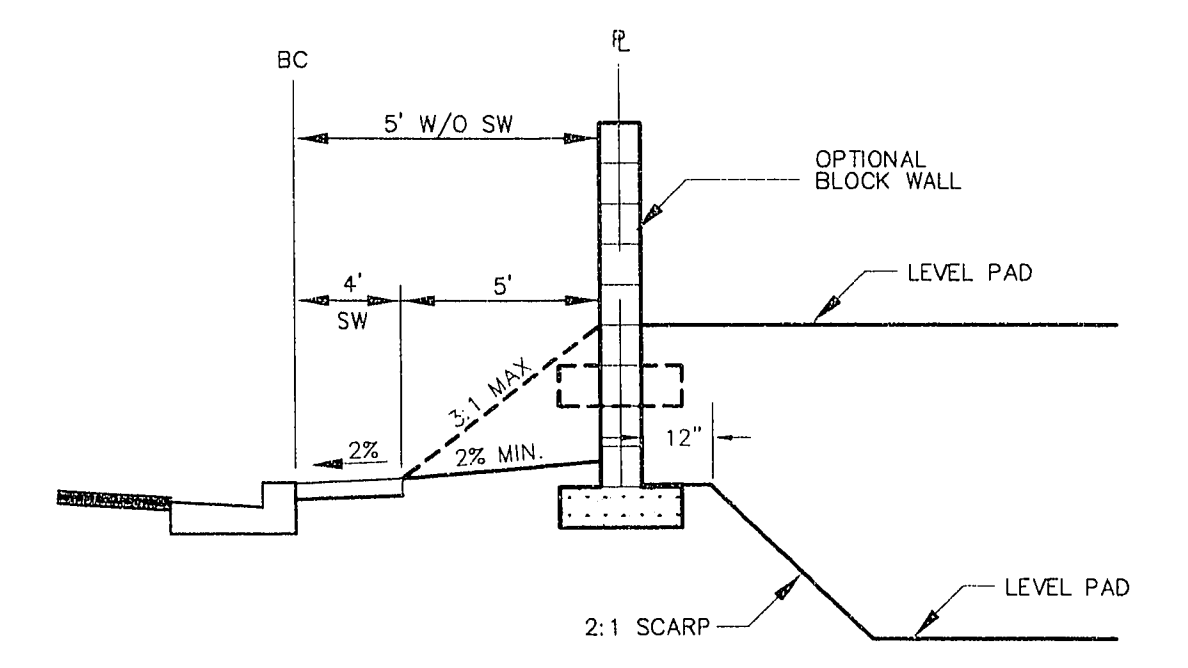


- INDICATED GRADES OTHER THAN T.C., F.G. & CUTTER F.L. ARE ROUGH GRADES. (0.3' LOWER THAN FINISHED GRADE).
- THE ROUGH GRADING PLANS SHALL BE ON THE JOB SITE AT ALL TIMES. THE ROUGH GRADING SHALL BE FINISHED IN CONFORMANCE WITH THE LINES AND GRADES SHOWN ON THE PLANS. THE GRADING QUANTITIES ARE BASED ON THE ELEVATION AND DETAILS SHOWN ON THE PLANS. ANY DEVIATIONS FROM THE PLANS WILL RESULT IN QUANTITY CHANGES.
- CARE SHALL BE EXERCISED IN GRADING CORNER LOTS.
- ROUGH PAD ELEVATIONS SHALL BE GRADED TO WITHIN 0.3' OF THE PAD ELEVATIONS SHOWN ON THE PLANS.
- SOILS REPORT PREPARED BY WESTERN TECHNOLOGIES, INC., WITH WTI PROJECT NO. 4122M301, DATED SEPTEMBER 28, 1992, AND SOILS TEST REPORT PREPARED BY TERRACON CONSULTANTS WESTERN, INC. (PROJECT #64945136) DATED JUNE 16, 1994.

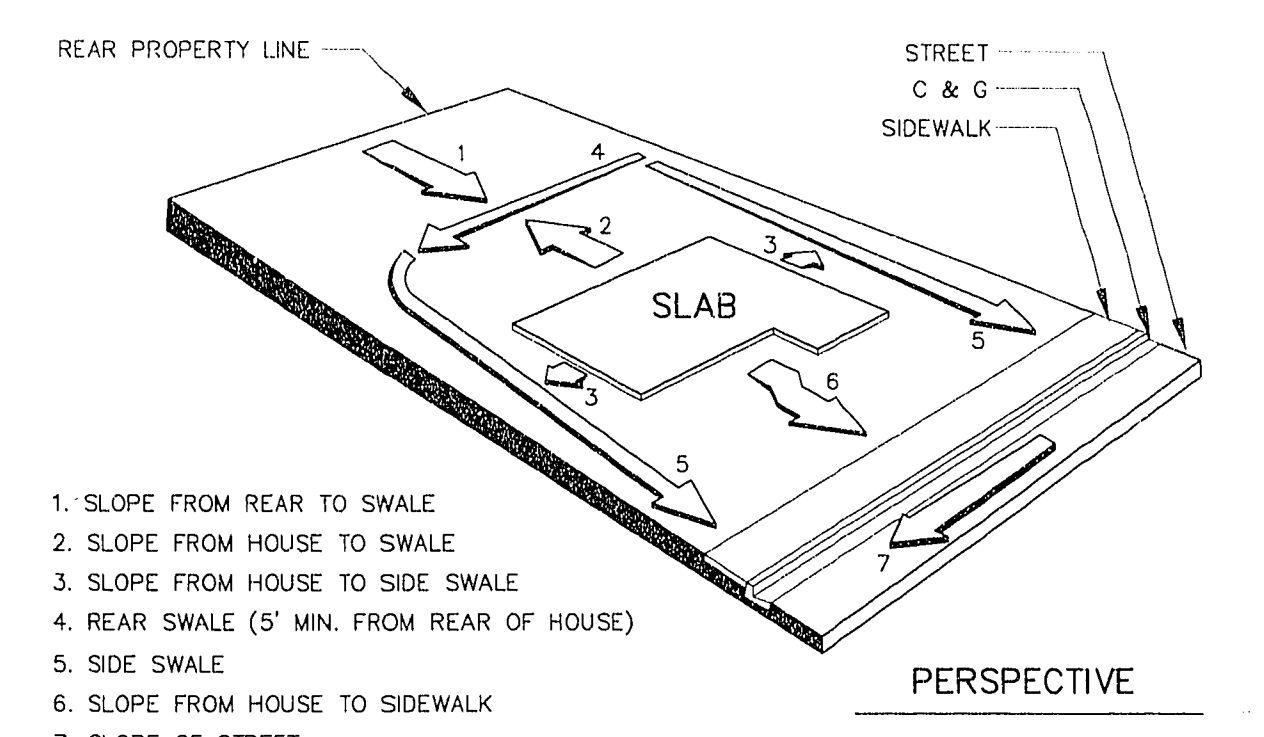
12 GRADING NOTES
SCALE: NO SCALE



9 REAR & SIDE YARD AT HUALAPAI WAY & CRESTDALE LANE
SCALE: NO SCALE

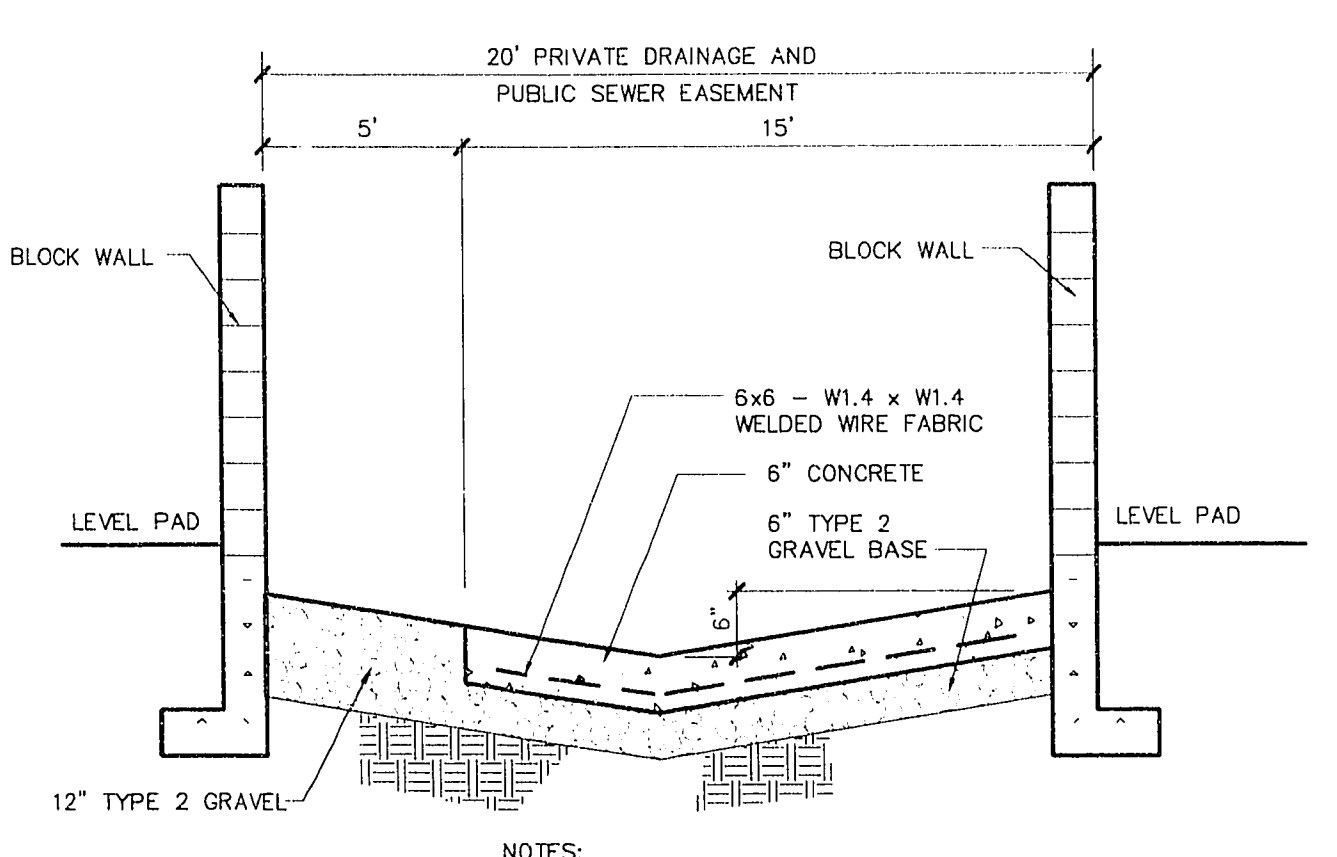


6 CORNER SIDE YARD
SCALE: NO SCALE

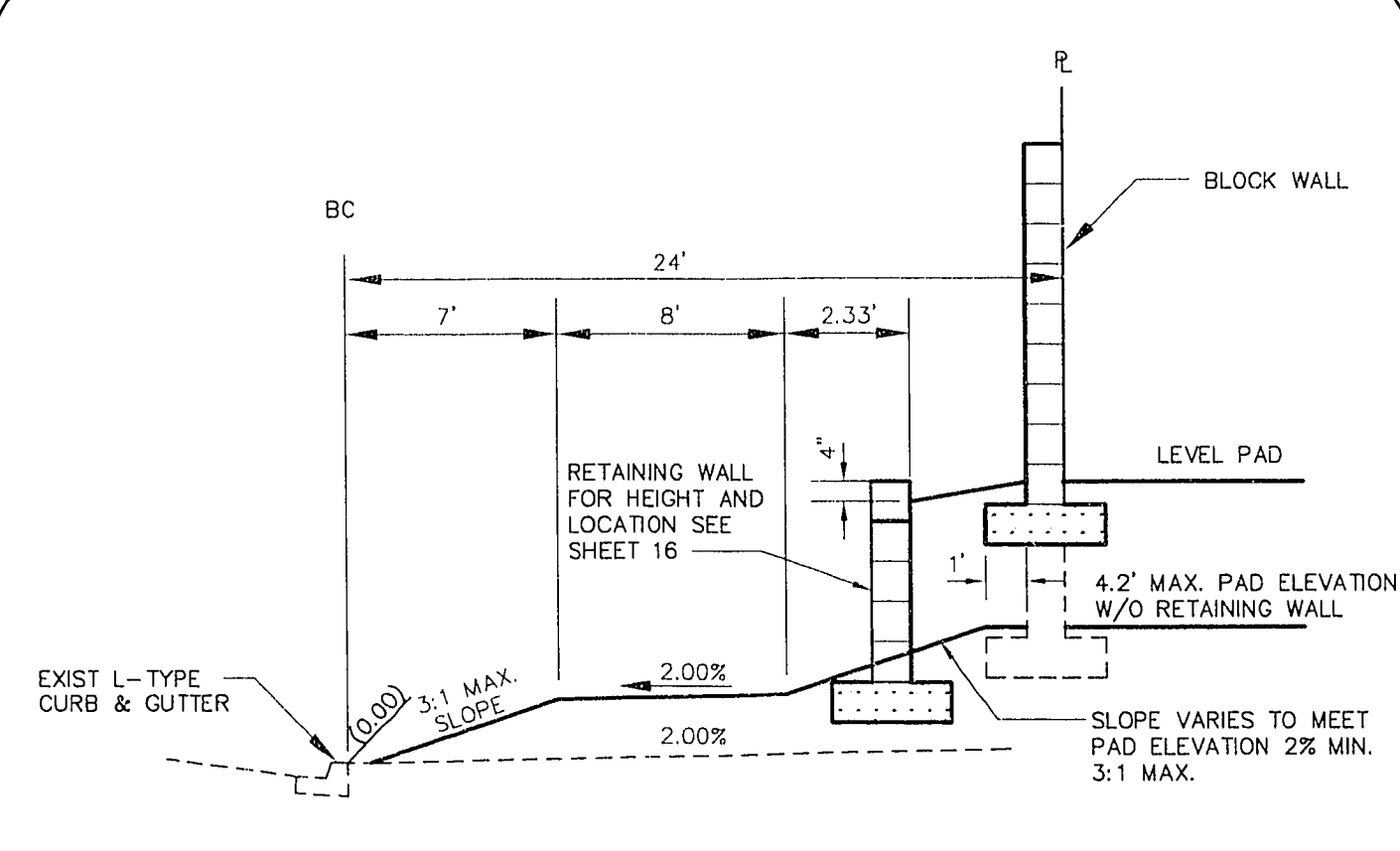


3 TYPICAL GRADING - TYPE 'A' DRAINAGE
SCALE: NO SCALE

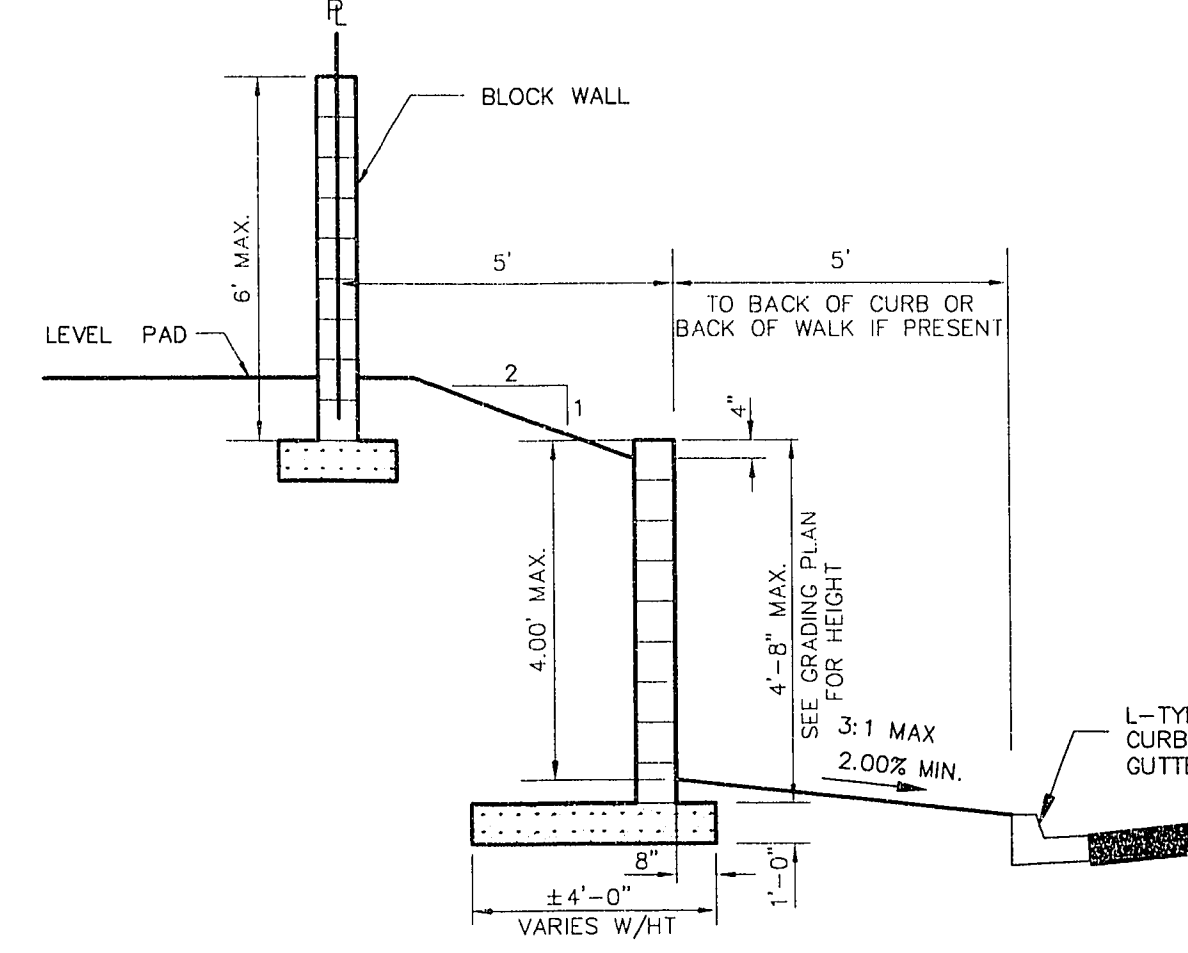
- SLOPE FROM REAR TO SWALE
- SLOPE FROM HOUSE TO SWALE
- SLOPE FROM HOUSE TO SIDE SWALE
- REAR SWALE (5' MIN. FROM REAR OF HOUSE)
- SIDE SWALE
- SLOPE FROM HOUSE TO SIDEWALK
- SLOPE OF STREET



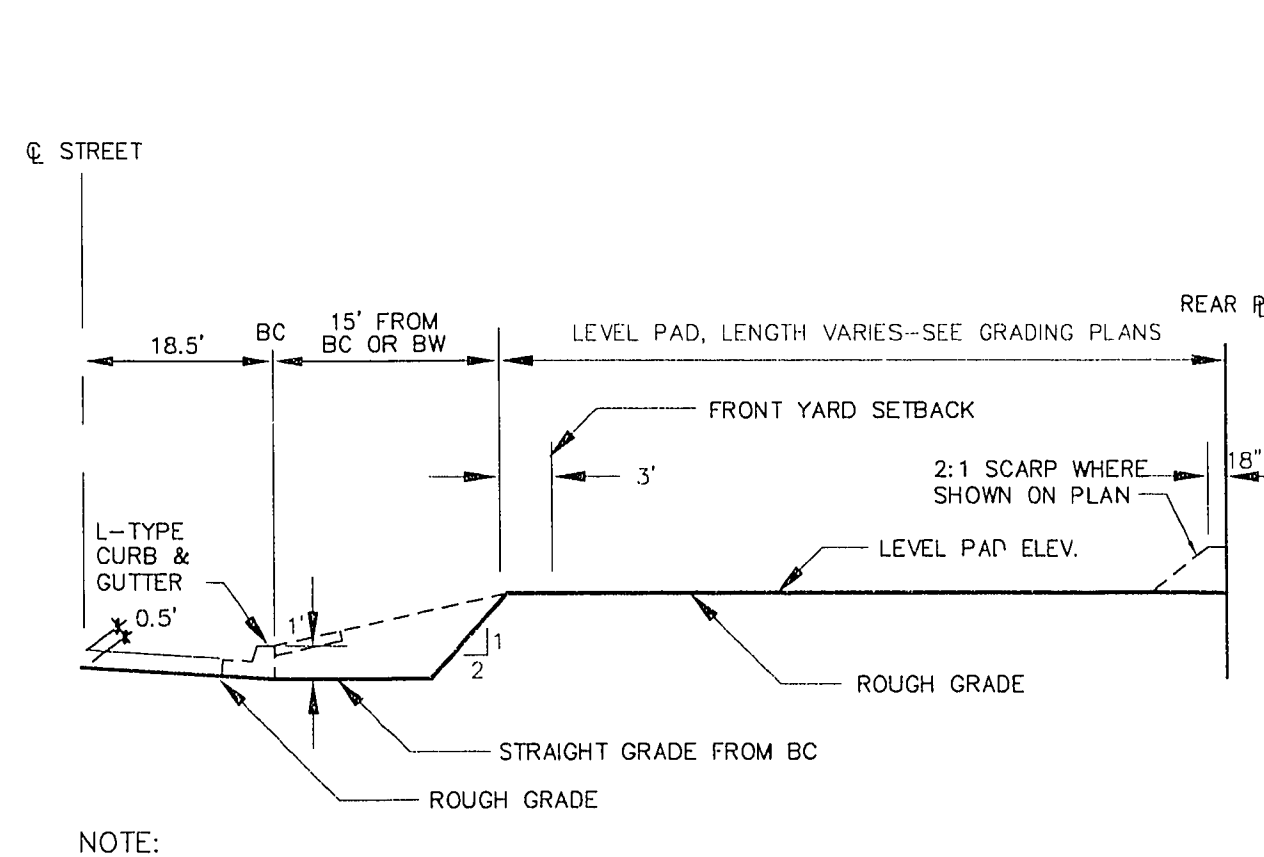
11 SECTION
SCALE: NO SCALE



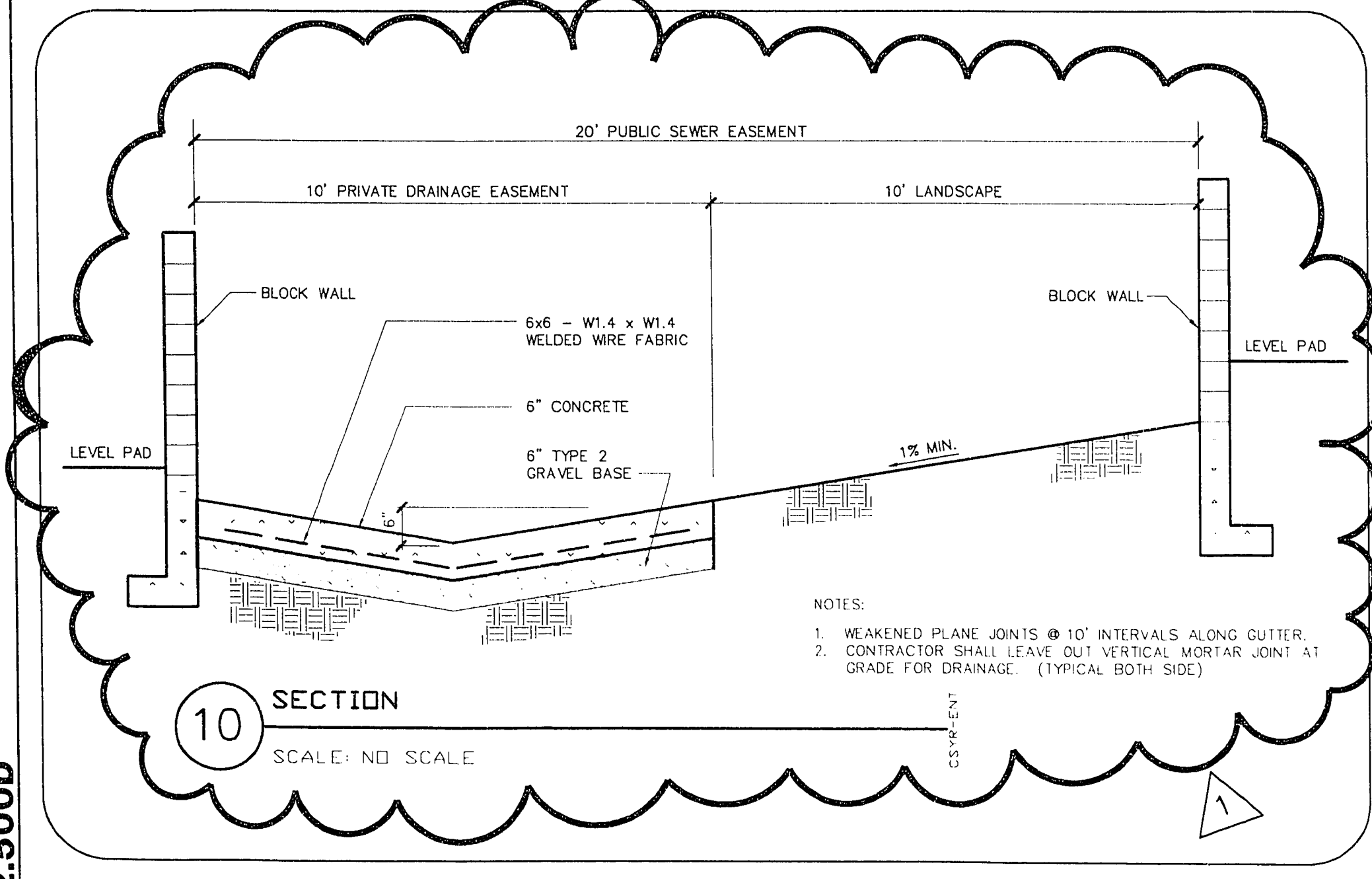
8 REAR YARD AT BANBURY CROSS DRIVE
SCALE: NO SCALE



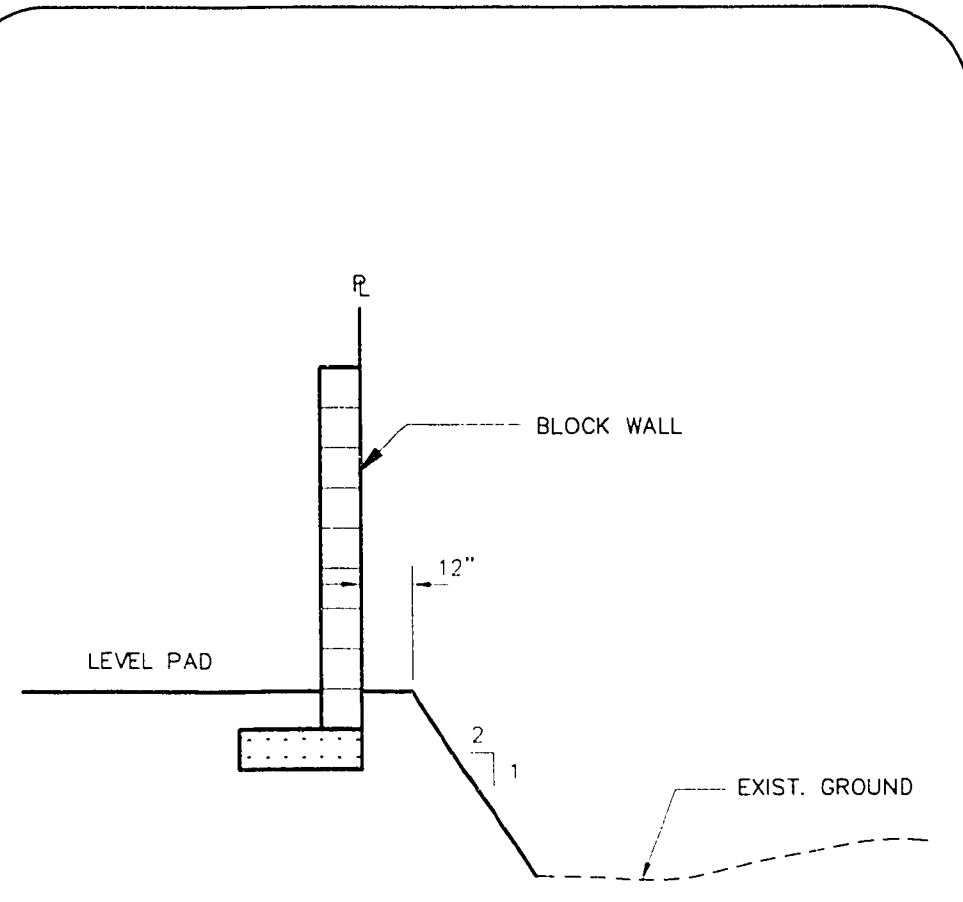
5 CORNER SIDE YARD DOUBLE WALL SECTION
SCALE: NO SCALE



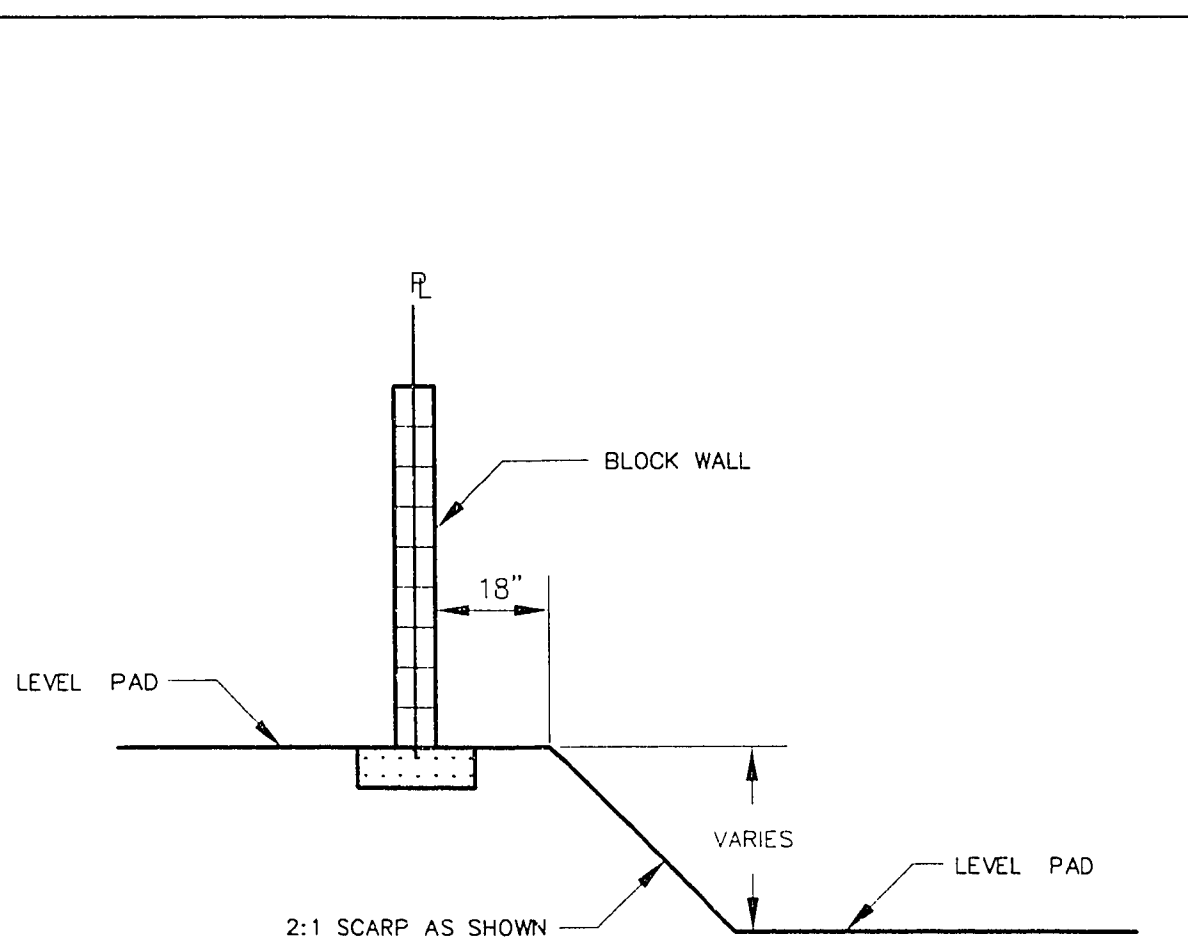
2 TYPICAL PAD AND STREET SECTION CUT (FOR ROUGH GRADING)
SCALE: NO SCALE



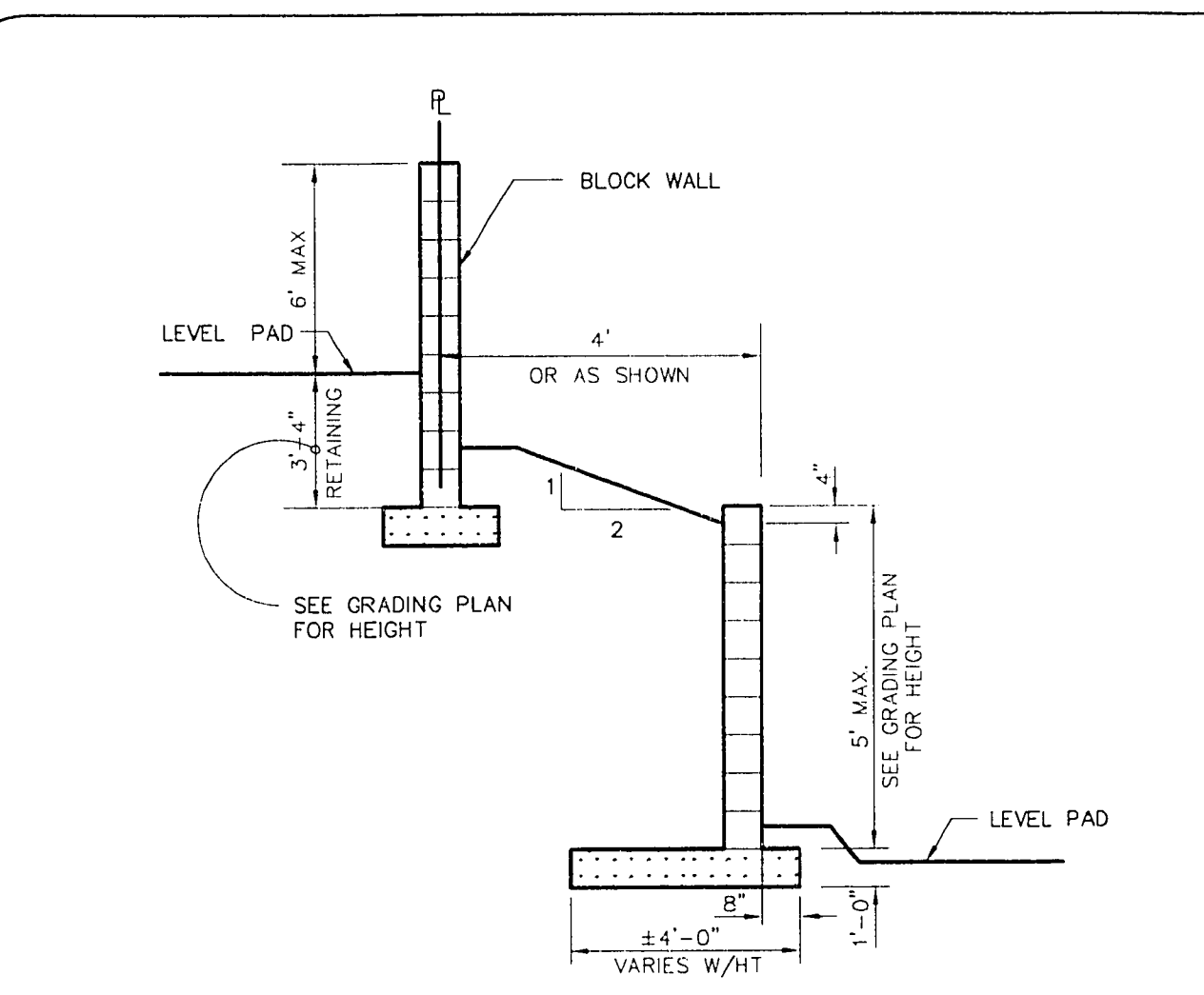
10 SECTION
SCALE: NO SCALE



7 REAR YARD AT PERIMETER
SCALE: NO SCALE



4 SIDE YARD
SCALE: NO SCALE



1 REAR YARD
SCALE: NO SCALE

RECOMMENDED BY

ENGINEER STATE OF NEVADA

NO. 11377

NO. 14534

DATE 07/14/96

REV. SECTION TO THIS SHEET 07/14/96

DESCRIPTION

G.C. WALLACE, INC.
Engineering/Architecture
1555 SOUTH RAINBOW BLVD./LAS VEGAS, NEVADA 89102
(702) 363-1200

NIGRO ASSOCIATES
SAN MARINO
GRADING DETAILS

662.500D

PLOTTED: 01/24/96
SM - GRDD.DWG

11-20-15.4

107V-4384