

**NOTICE**

EXISTING UTILITIES ARE SHOWN ON PLANS FOR THE CONVICTION OF THE CONTRACTOR ONLY. THE CONTRACTOR IS RESPONSIBLE FOR THE PROTECTION OF ALL UTILITIES. THE ENGINEER BEARS NO RESPONSIBILITY FOR UTILITIES NOT SHOWN OR SHOWN INCORRECTLY.

**BEFORE YOU Call D<sub>9</sub>**

1-800-227-2600  
UNDERGROUND SERVICE (UAS)

CLARK COUNTY  
DEPARTMENT OF PUBLIC WORKS  
ENGINEERING DIVISION

Acceptance of plans for filing

By: *Patricia D. [Signature]* 1/28/99

Acceptance of these plans for filing shall not be construed to be a permit for or an approval of any violation of any of the provisions of the state or county laws and/or specifications. Clark County shall be held free from damages which may result from the construction of the improvements from the engineering design depicted herein.

NOTE: Power poles and/or other existing facilities not in proper location based on proposed improvements shown herein will be re-located at no expense to Clark County.

**BENCHMARK**

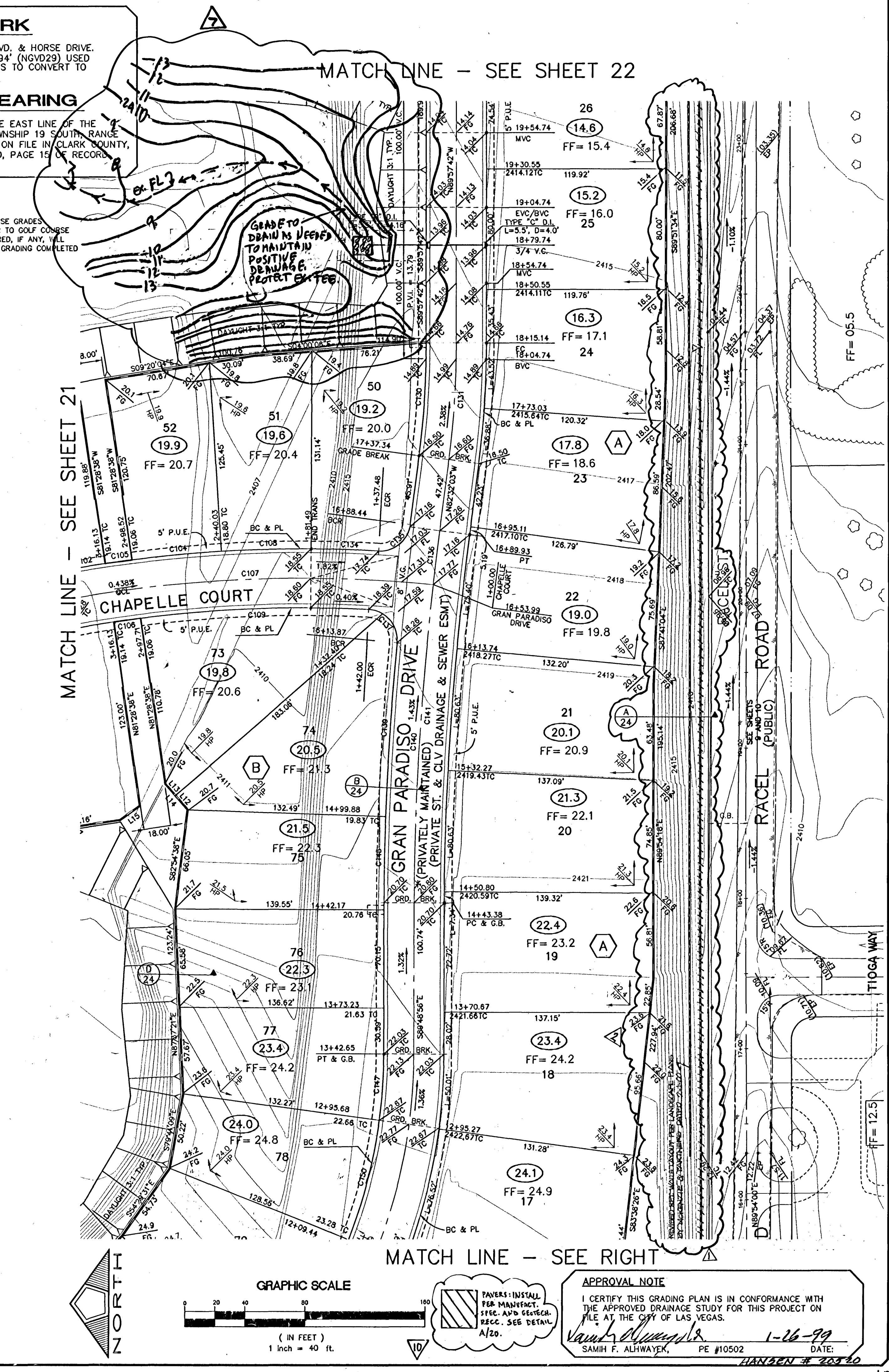
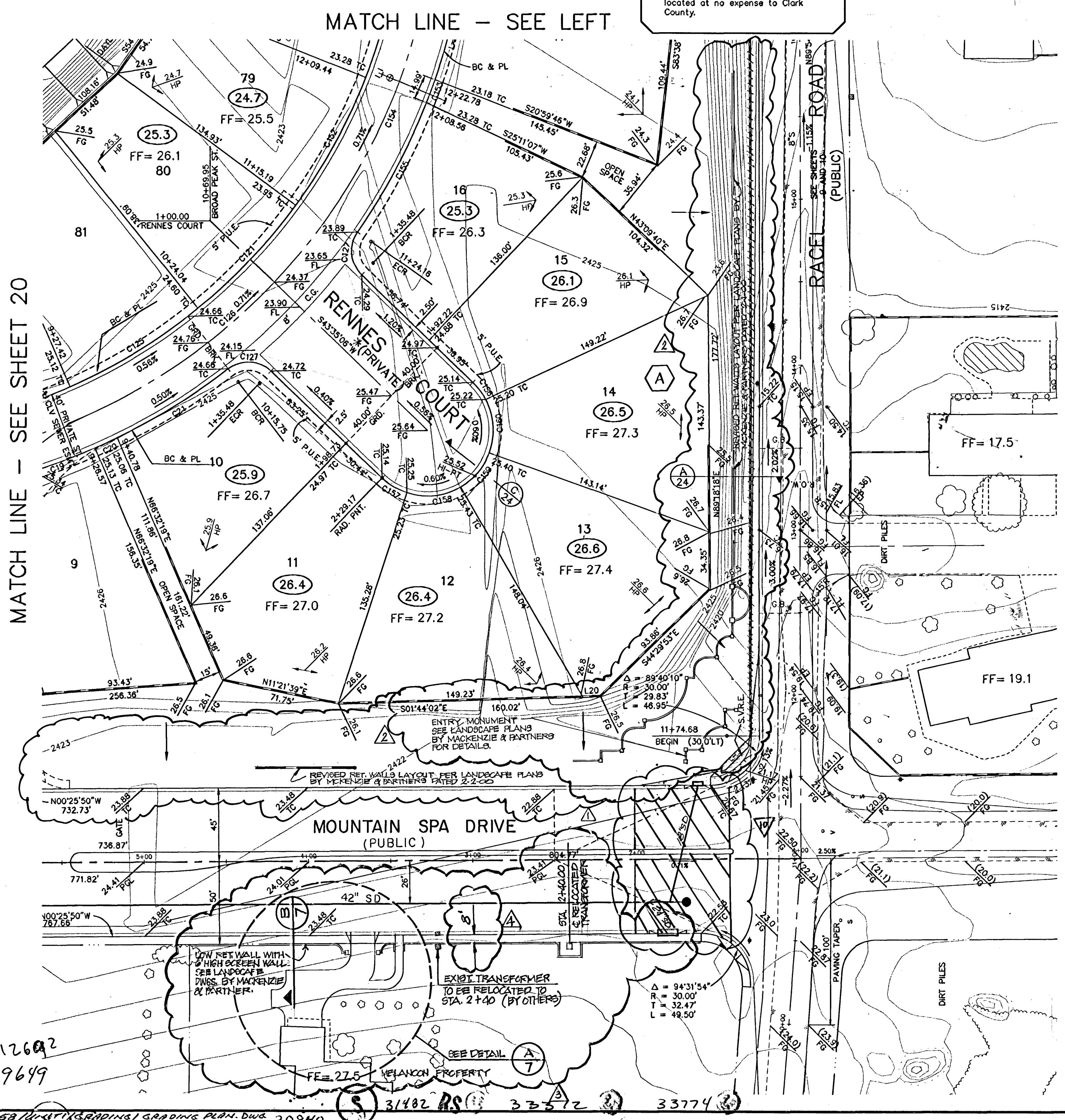
BLM BRASS CAP #41, RAINBOW BLVD. & HORSE DRIVE.  
STA. 11V90/11W4, ELEV. = 2396.994' (NGVD29) USED  
(ADD 2.41 FEET TO ALL ELEVATIONS TO CONVERT TO NAVD 88 DATUM)

**BASIS OF BEARING**

SOUTH 00°37'59" EAST, BEARING OF THE EAST LINE OF THE NORTHEAST (N1/4) OF SECTION 10, TOWNSHIP 19 SOUTH, RANGE 60 EAST, M.D.M. AS SHOWN BY A MAP ON FILE IN CLARK COUNTY, NEVADA RECORDER'S OFFICE AS FILE 70, PAGE 15 OF RECORD OF SURVEYS.

ALL DAYLIGHT SCARPING TO MEET GOLF COURSE GRADES ARE SHOWN FOR NATURAL CONDITIONS. PRIOR TO GOLF COURSE GRADING, PRECISE EXTENT OF SCARPS REQUIRED, IF ANY, WILL DEPEND UPON THE EXTENT OF GOLF COURSE GRADING COMPLETED AT THE TIME GRADING FOR UNIT 1 BEGINS.

\* NOTE  
ALL PRIVATE STREETS W/P.U.E., CLV, DRAINAGE EASEMENT TO BE PRIVATELY MAINTAINED, & CLV SEWER EASEMENT.



MATCH LINE - SEE SHEET 20

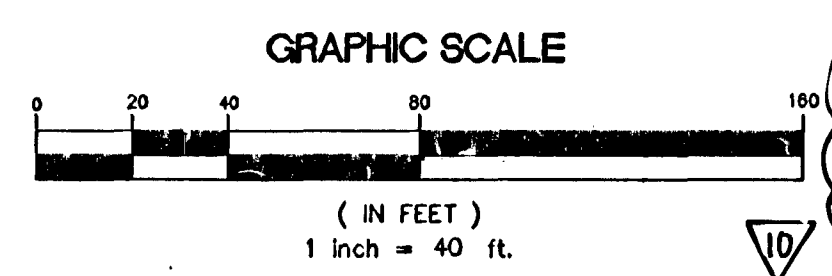
MATCH LINE - SEE LEFT

MATCH LINE - SEE SHEET 21

MATCH LINE - SEE SHEET 22

MATCH LINE - SEE RIGHT

112692  
109699



**APPROVAL NOTE**

I CERTIFY THIS GRADING PLAN IS IN CONFORMANCE WITH THE APPROVED DRAINAGE STUDY FOR THIS PROJECT ON FILE AT THE CITY OF LAS VEGAS.

*[Signature]* 1-26-99  
SAMIH F. ALHWAYEK, PE #10502 DATE: 1-26-99

NO.	DESCRIPTION	DATE	APPD.
1	REVISE TO SHOW TRENCHES IN LIEU OF AC	8-1-98	[Signature]
2	SHORTEN STORM DRAIN AND ADJUST GRAD	2-14-98	[Signature]
3	ADJUST BLOCK WALL S FROM BC	2-14-98	[Signature]
4	ADJUST BLOCK WALL S FROM BC	2-14-98	[Signature]
5	ADJUST BLOCK WALL S FROM BC	2-14-98	[Signature]
6	ADJUST BLOCK WALL S FROM BC	2-14-98	[Signature]
7	ADJUST BLOCK WALL S FROM BC	2-14-98	[Signature]
8	ADJUST BLOCK WALL S FROM BC	2-14-98	[Signature]
9	ADJUST BLOCK WALL S FROM BC	2-14-98	[Signature]
10	ADJUST BLOCK WALL S FROM BC	2-14-98	[Signature]
11	ADJUST BLOCK WALL S FROM BC	2-14-98	[Signature]
12	ADJUST BLOCK WALL S FROM BC	2-14-98	[Signature]
13	ADJUST BLOCK WALL S FROM BC	2-14-98	[Signature]
14	ADJUST BLOCK WALL S FROM BC	2-14-98	[Signature]
15	ADJUST BLOCK WALL S FROM BC	2-14-98	[Signature]
16	ADJUST BLOCK WALL S FROM BC	2-14-98	[Signature]
17	ADJUST BLOCK WALL S FROM BC	2-14-98	[Signature]
18	ADJUST BLOCK WALL S FROM BC	2-14-98	[Signature]
19	ADJUST BLOCK WALL S FROM BC	2-14-98	[Signature]
20	ADJUST BLOCK WALL S FROM BC	2-14-98	[Signature]
21	ADJUST BLOCK WALL S FROM BC	2-14-98	[Signature]
22	ADJUST BLOCK WALL S FROM BC	2-14-98	[Signature]
23	ADJUST BLOCK WALL S FROM BC	2-14-98	[Signature]
24	ADJUST BLOCK WALL S FROM BC	2-14-98	[Signature]
25	ADJUST BLOCK WALL S FROM BC	2-14-98	[Signature]
26	ADJUST BLOCK WALL S FROM BC	2-14-98	[Signature]

**MOUNTAIN SPA RESIDENTIAL DEVELOPMENT, I.L.C.**  
2810 WEST CHARLES BLVD., SUITE F-36  
LAS VEGAS, NV 89102  
(702)970-1234

**PENTACORE**  
CIVIL ENGINEERING, LAND SURVEYING, PLANNING  
AND ARCHITECTURE  
2810 WEST CHARLES BLVD., SUITE F-36  
LAS VEGAS, NV 89102  
(702)970-1234

GRADING PLAN - 4

MOUNTAIN SPA  
UNIT NO. 1

DATE: JULY 98  
DRAWN BY: LENNARD  
DESIGNED BY:  
CHECKED BY: ADA  
JOB NO.: 0158.0001  
SCALE: 1" = 40'

PROFESSIONAL ENGINEER - STATE OF NEVADA  
*[Signature]*  
SAMIH ALHWAYEK  
1-26-99  
CIVIL  
No. 10502

SHEET **23** OF 29  
C.L.V. DWG.#

1074-4344-1  
73-4483