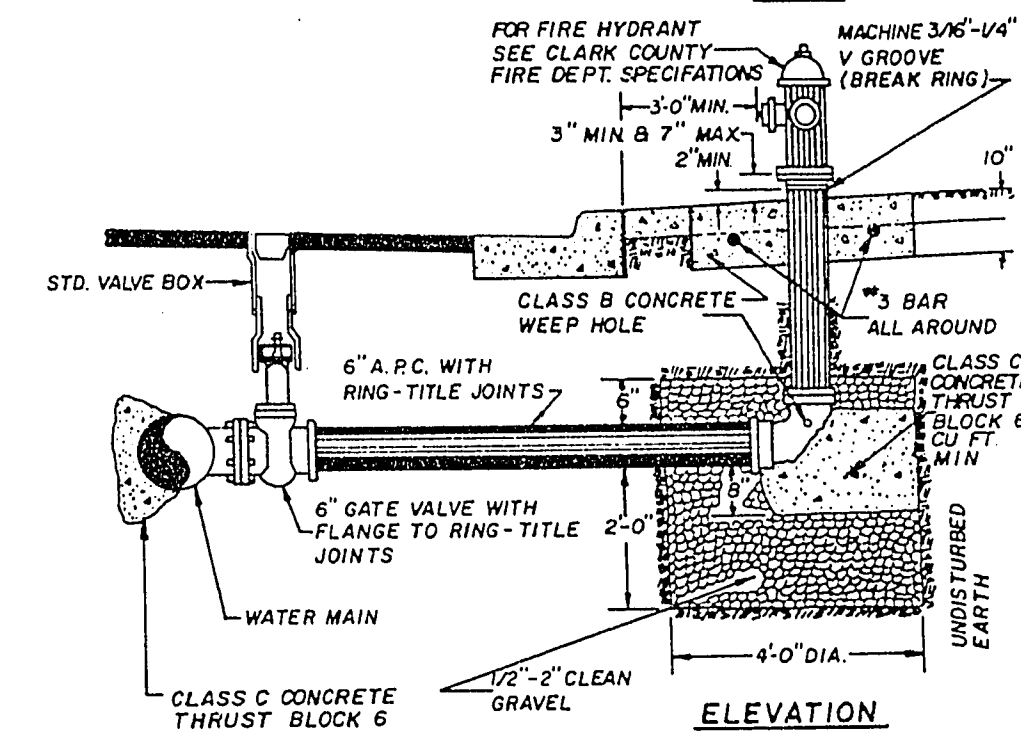
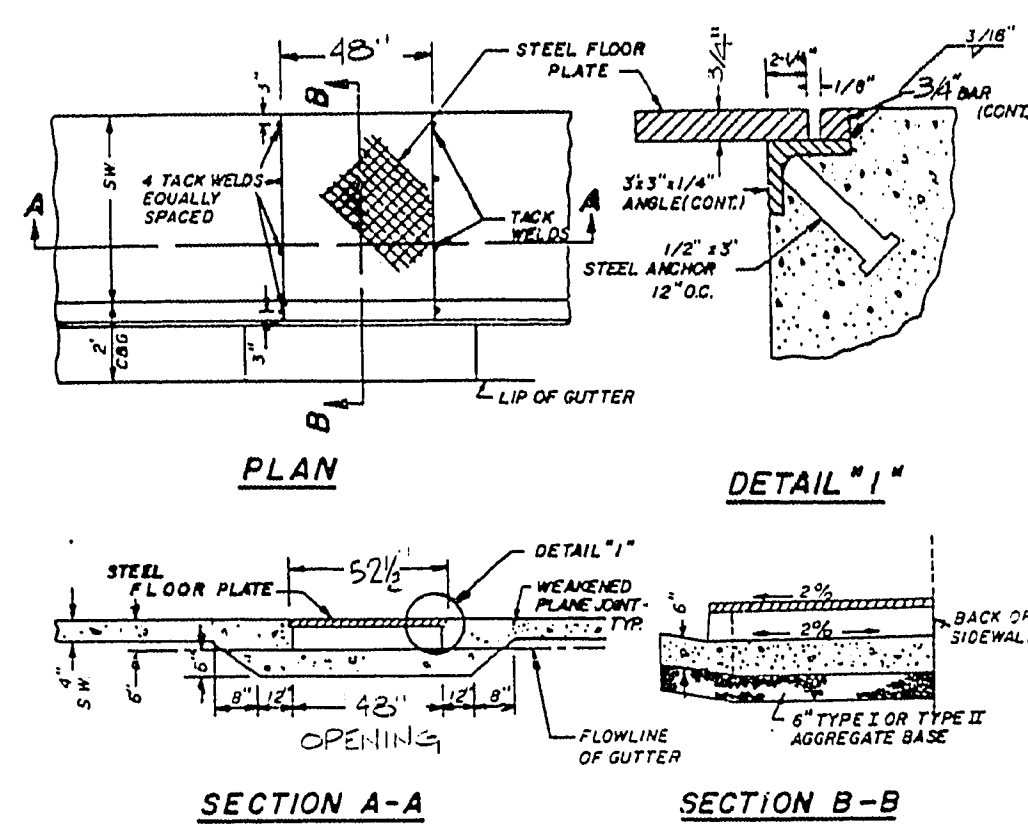


**NOTES:**

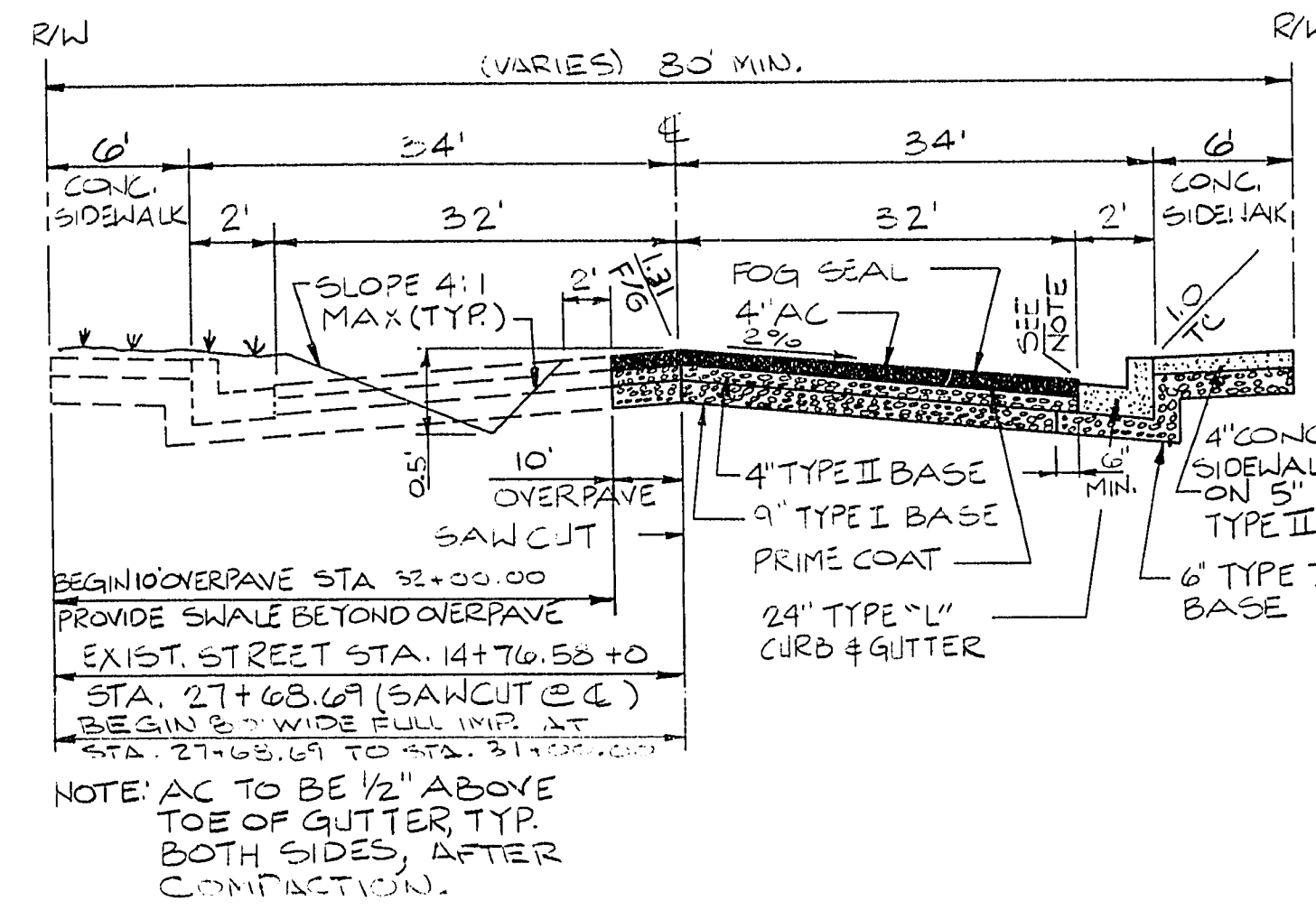
1. NO HYDRANT SHALL BE LOCATED WITHIN 15' OF ANY DRIVEWAY, 6' OF POWER POLE, LIGHT STANDARD, OR ANY OTHER OBSTRUCTION.
2. IF HYDRANT IS TO BE INSTALLED IN AN EXISTING SIDEWALK, A FULL PANEL OF THE SIDEWALK SHALL BE REMOVED AND REPLACED AFTER INSTALLATION OF THE HYDRANT.
3. WHEN R/W AND FIELD CONDITIONS PERMIT THE FIRE HYDRANT SHALL BE PLACED BEHIND THE SIDEWALK.



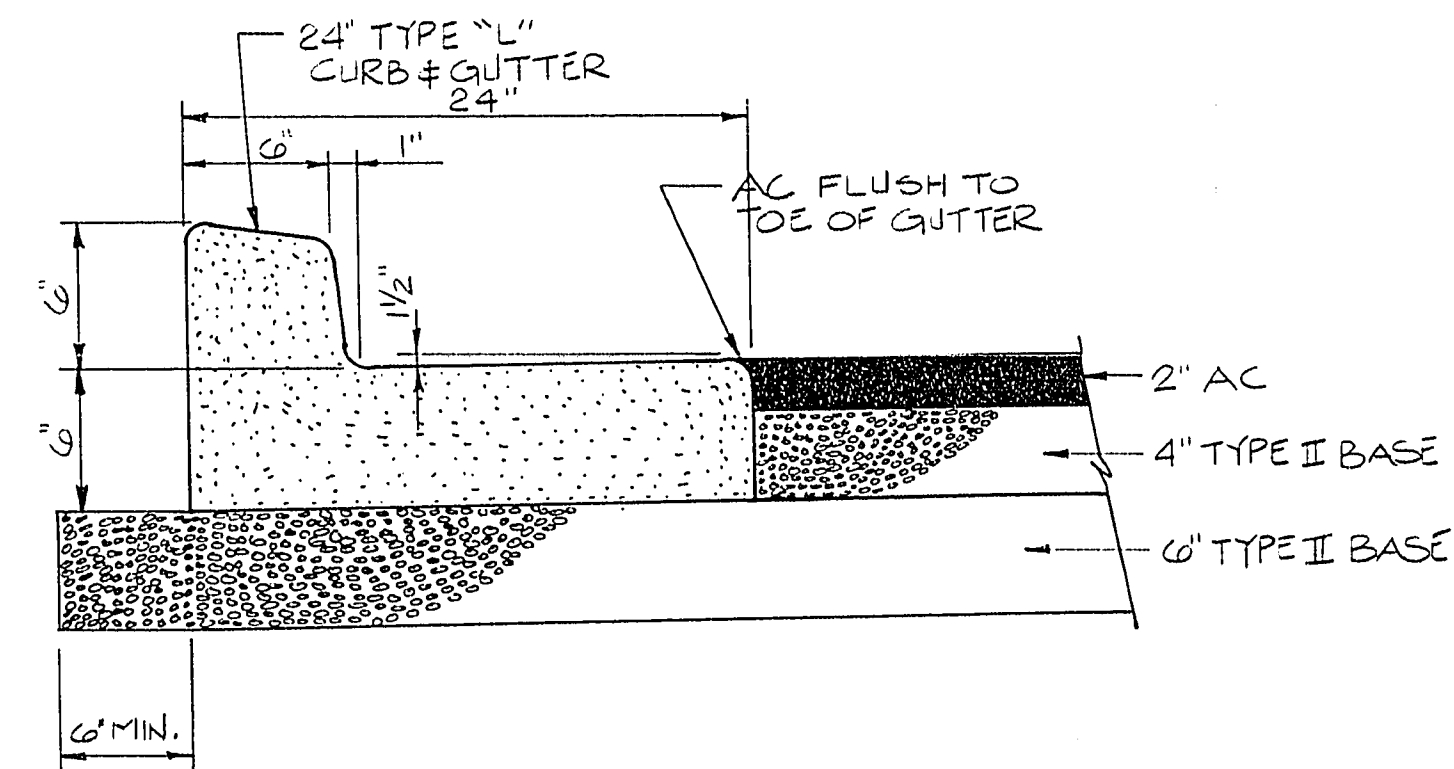
TYPICAL FIREHYDRANT DETAIL



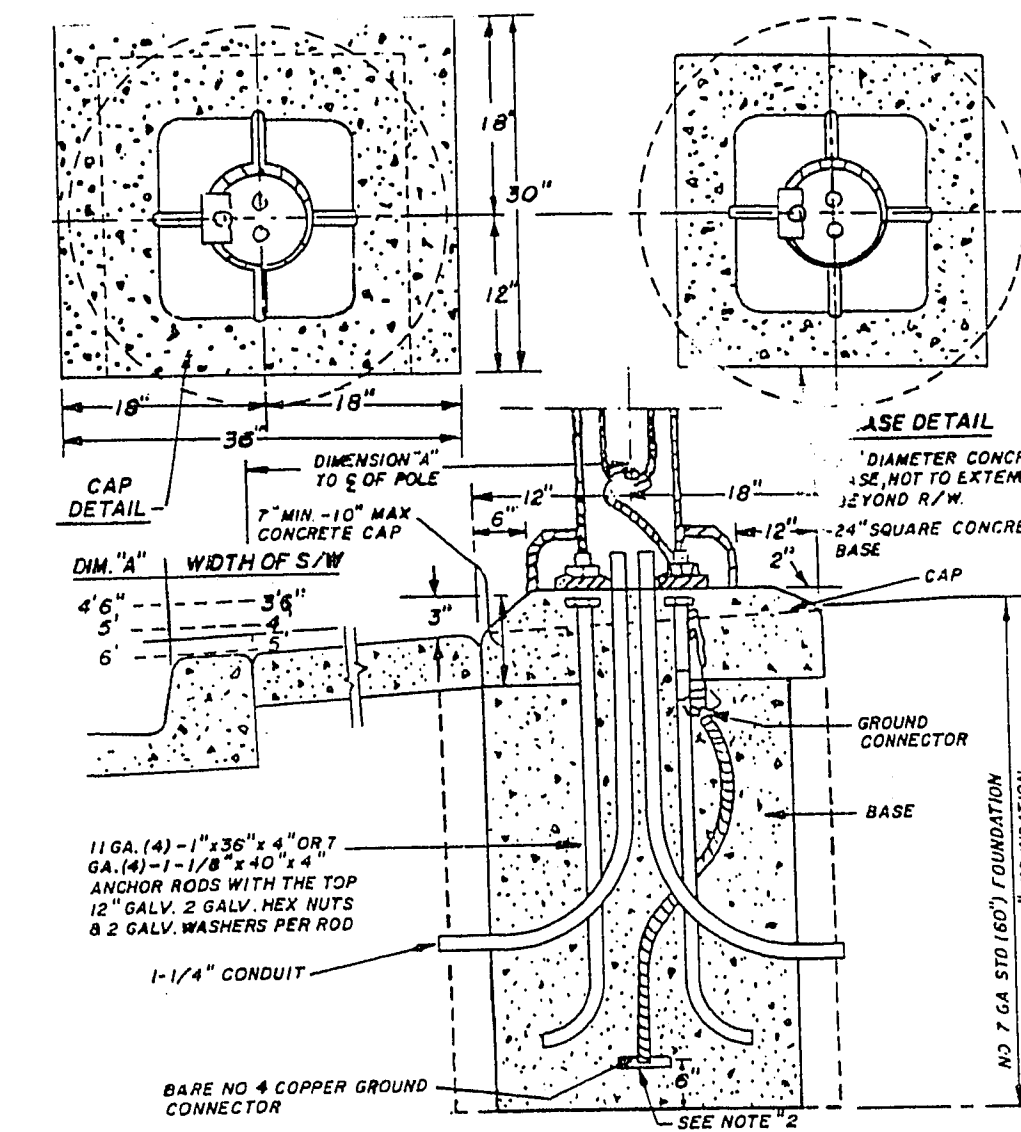
TYPICAL SIDEWALK UNDERDRAIN DETAIL



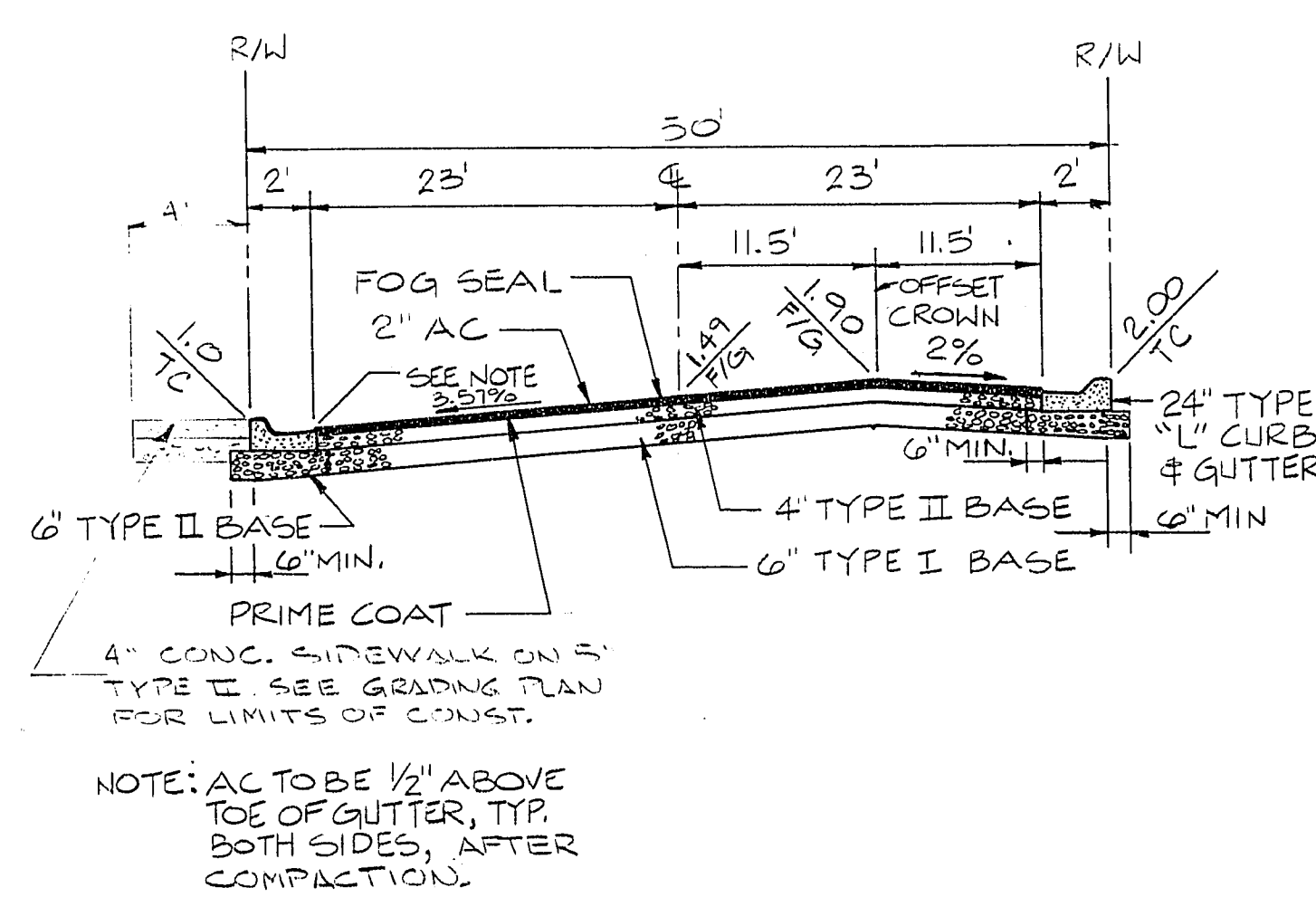
80' TYPICAL HALF STREET MEADOWS LANE MICHEAL WAY



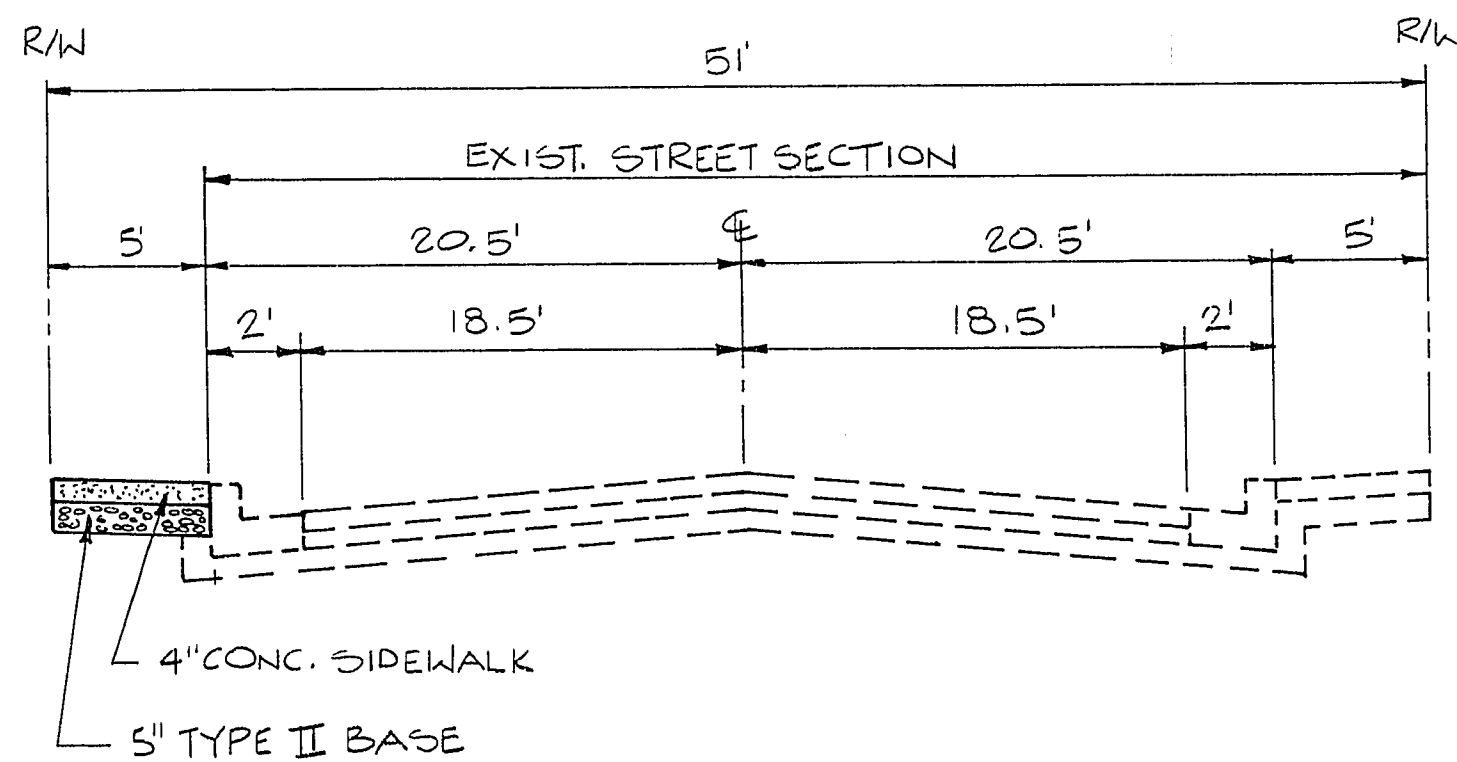
TYPE "L" C. & G. CONDOMINIUM AREA A



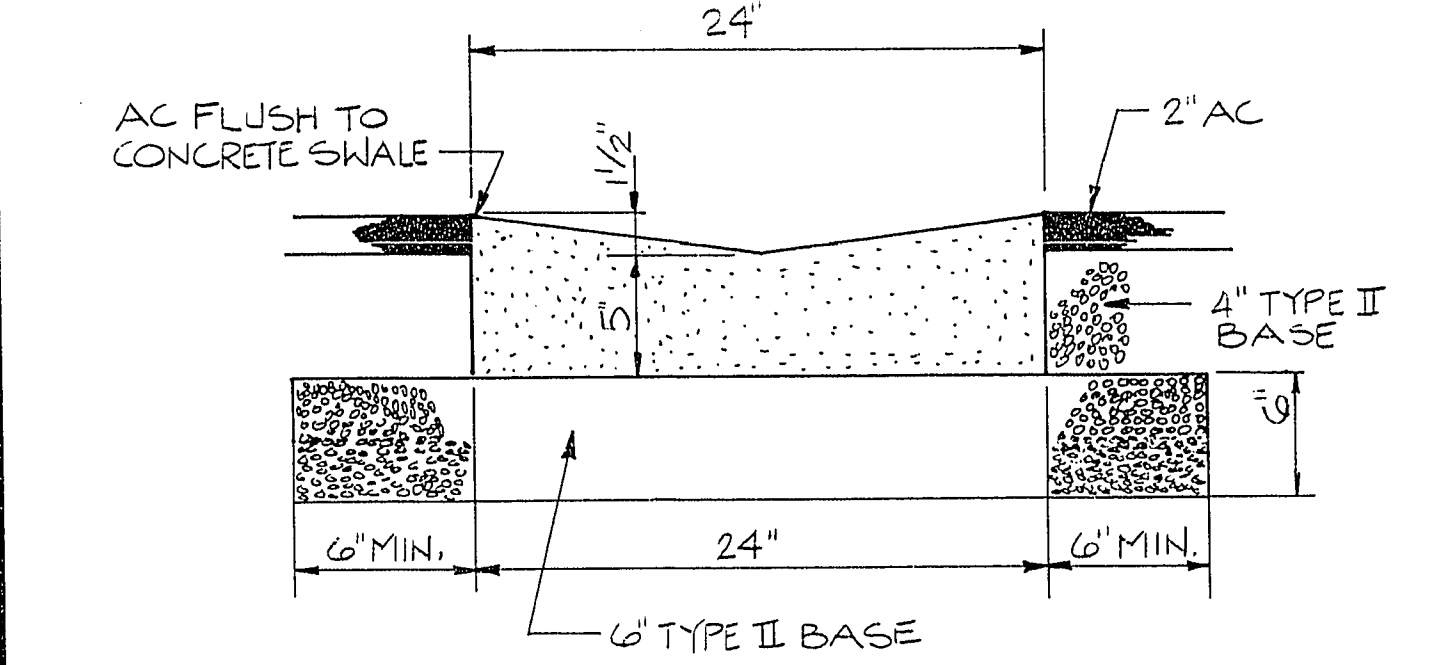
TYPICAL STREET LIGHT DETAIL



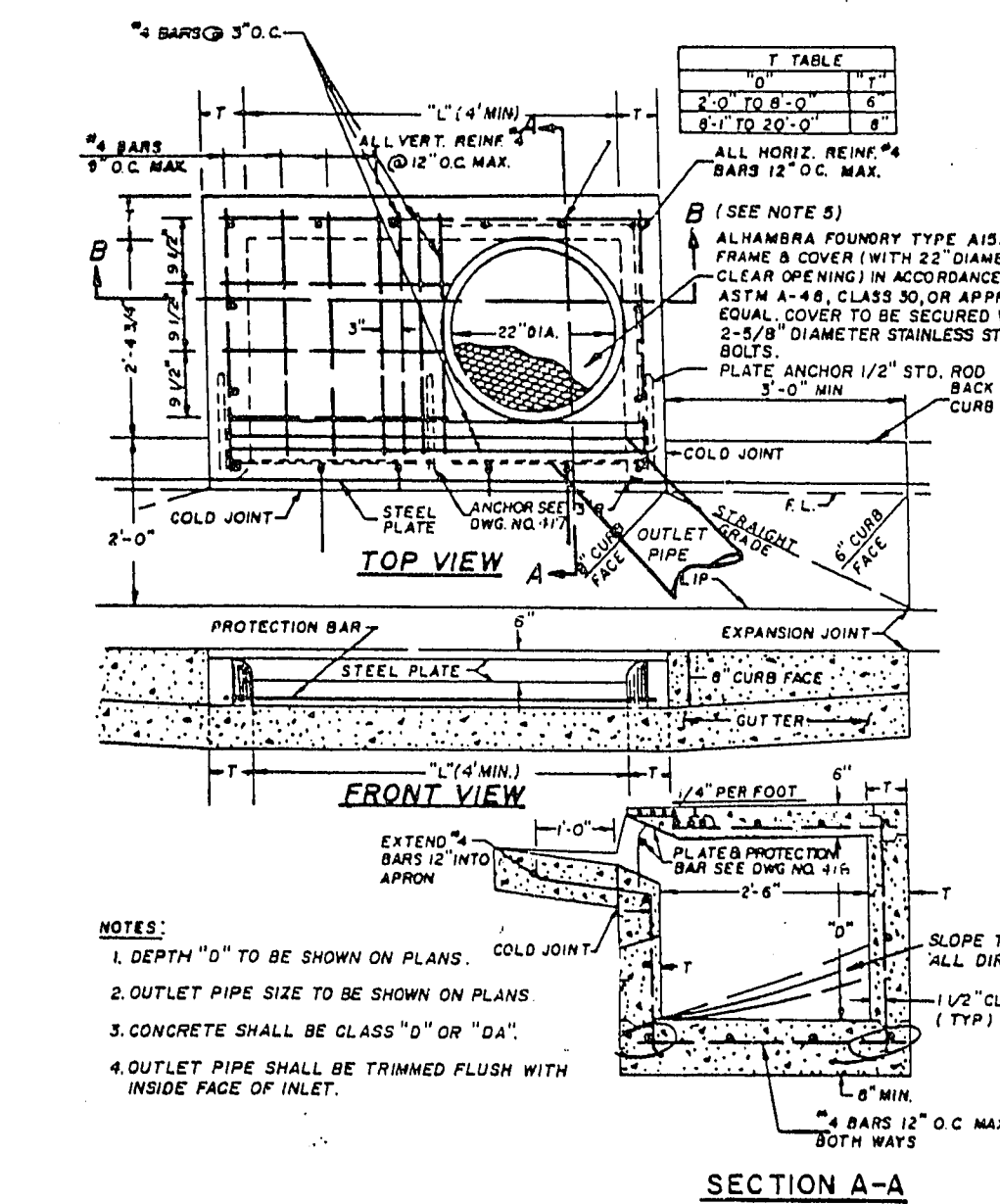
PRIVATE STREET 50' TYPICAL STREET SECTION WITH 1' CROSSFALL AND OFFSET CROWN STA. 5+72.72 TO STA. 8+01.52



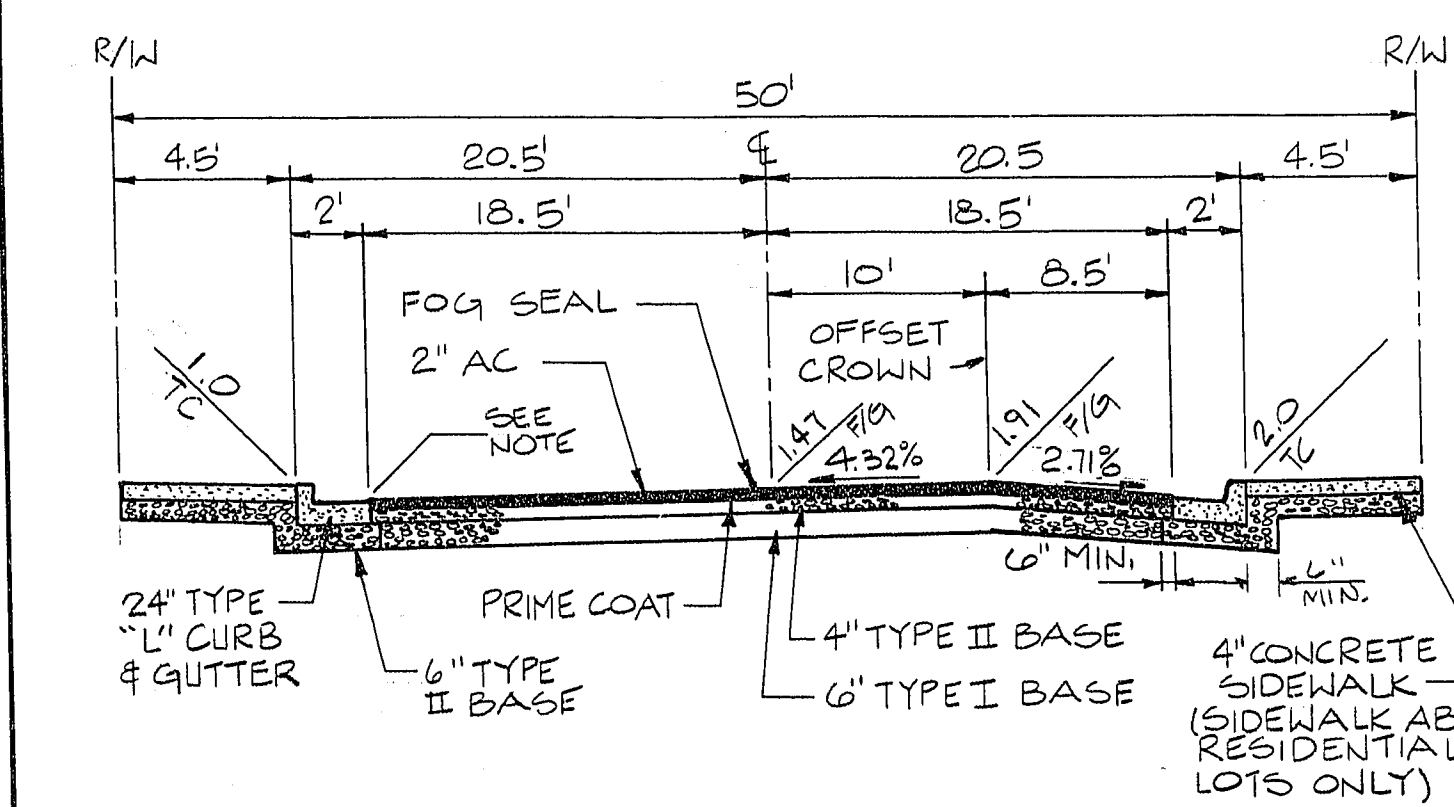
51' TYPICAL STREET SECTION SIDEWALK ONLY HARMONY AVENUE



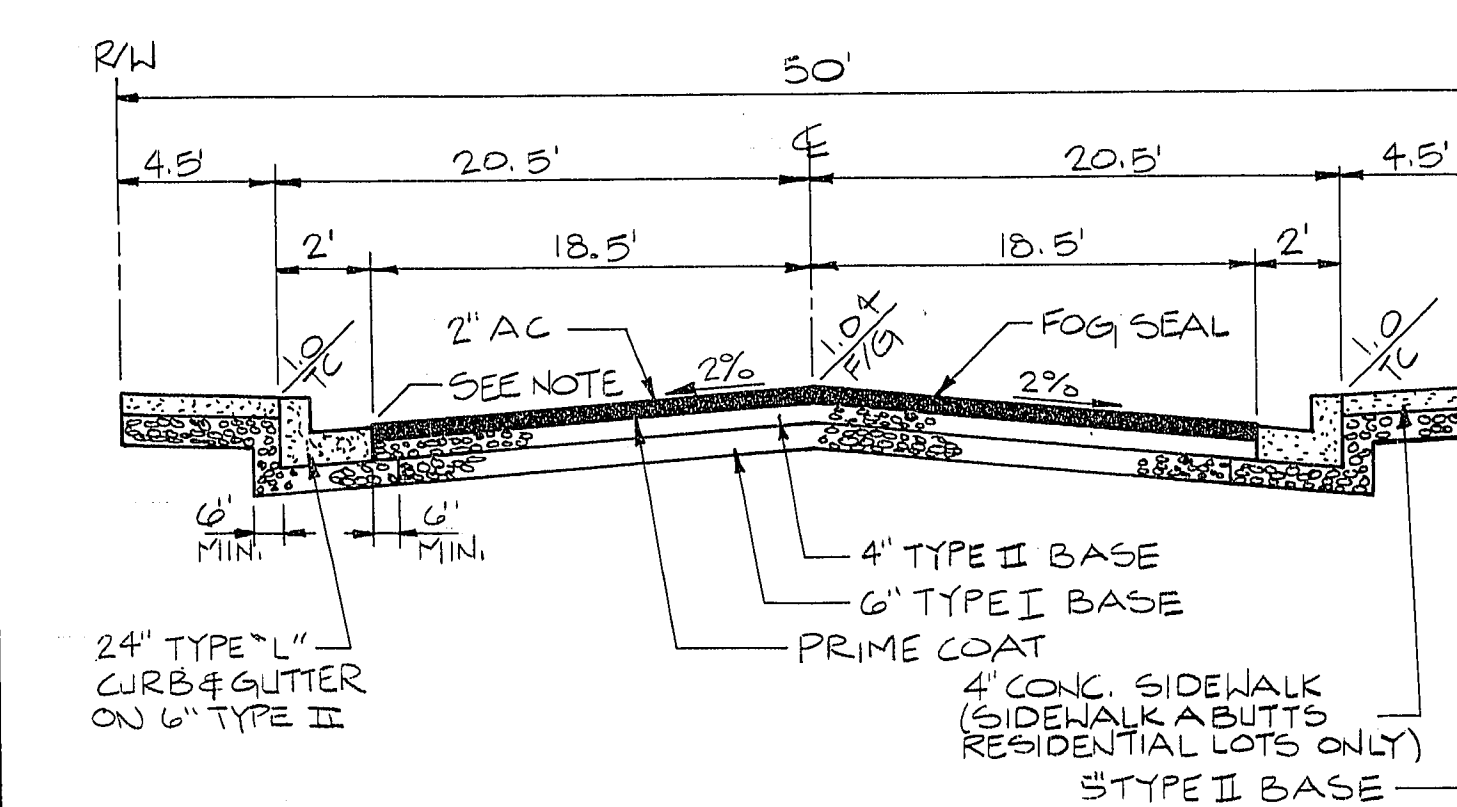
24" CONC. SWALE CONDOMINIUM AREA B



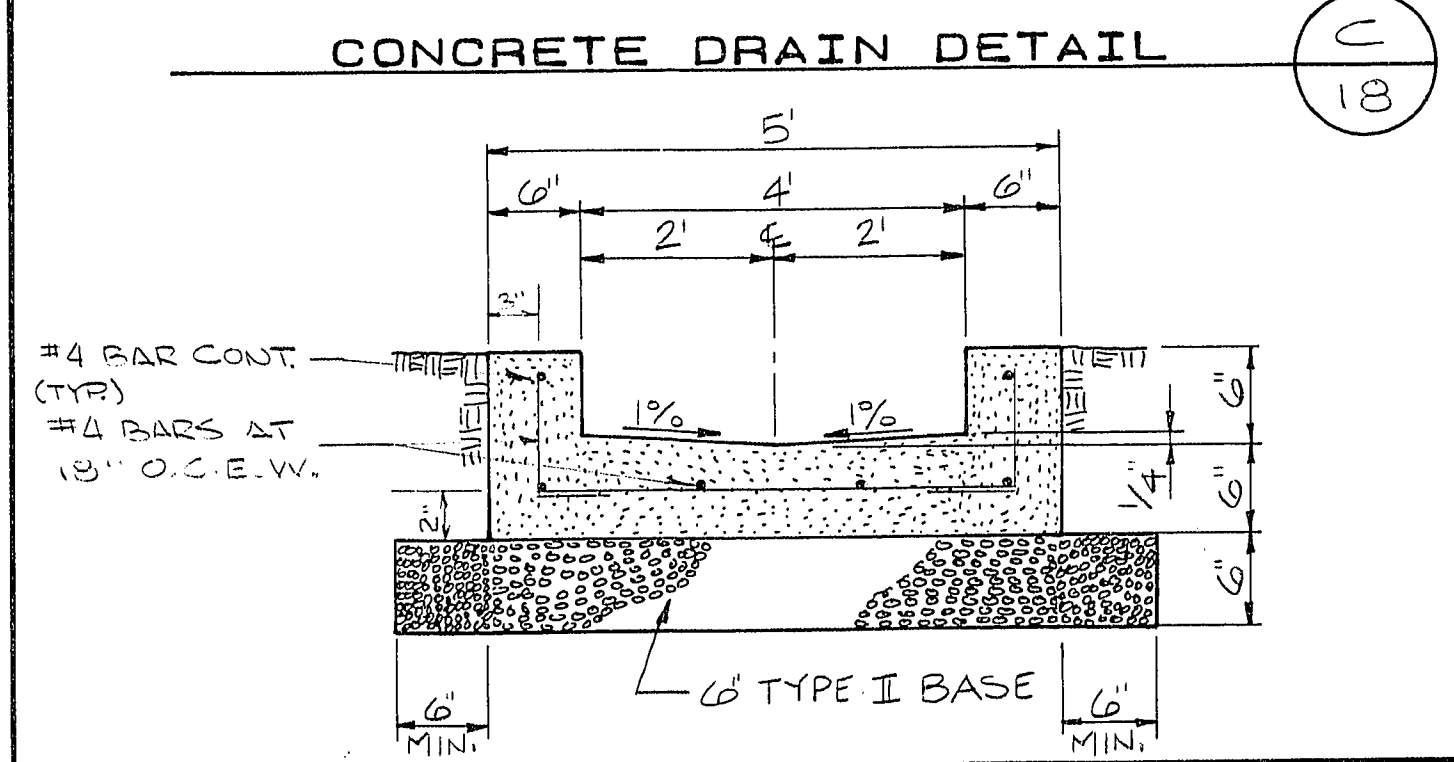
TYPICAL TYPE "A" DROP INLET



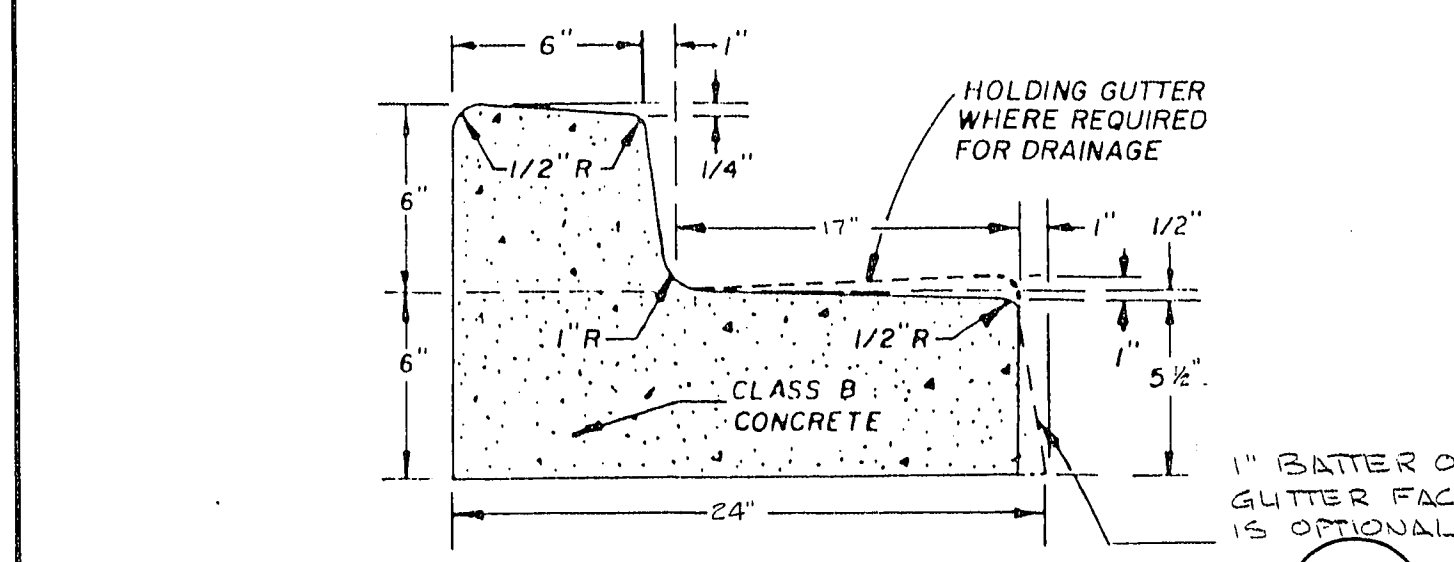
PRIVATE STREET 50' TYPICAL STREET SECTION WITH 1' CROSSFALL AND OFFSET CROWN



PRIVATE STREET 50' TYPICAL STREET SECTION



CONCRETE DRAIN DETAIL



TYPE "L" CURB & GUTTER

REVISION

NO.	DATE	BY

10-6-88

*Donald W. Maxwell*

**SOUTHWEST ENGINEERING**  
LAND PLANNING • MAPPING • DEVELOPMENT  
1725 S. RAINBOW BLVD. STE. 214 LAS VEGAS, NEVADA 89102  
(702) 363-9700

DETAIL SHEET

**MISSION RIDGE/PACIFIC RIDGE**

TITLE PROJECT

W.O. No. 880527  
BY RICHARD  
DATE SEPT. 88  
SCALE NONE

SHEET **18**  
OF 18 SHEETS

208 1074 4026