

**BASIS OF ELEVATION**

CLARK CO. BM # 1023301 BRASS I + TAG IN TOP OF CURB SE RETURN OF BOYANZA + NEW 6 TO BE TAKEN AS ELEV. 1799.91 FT.

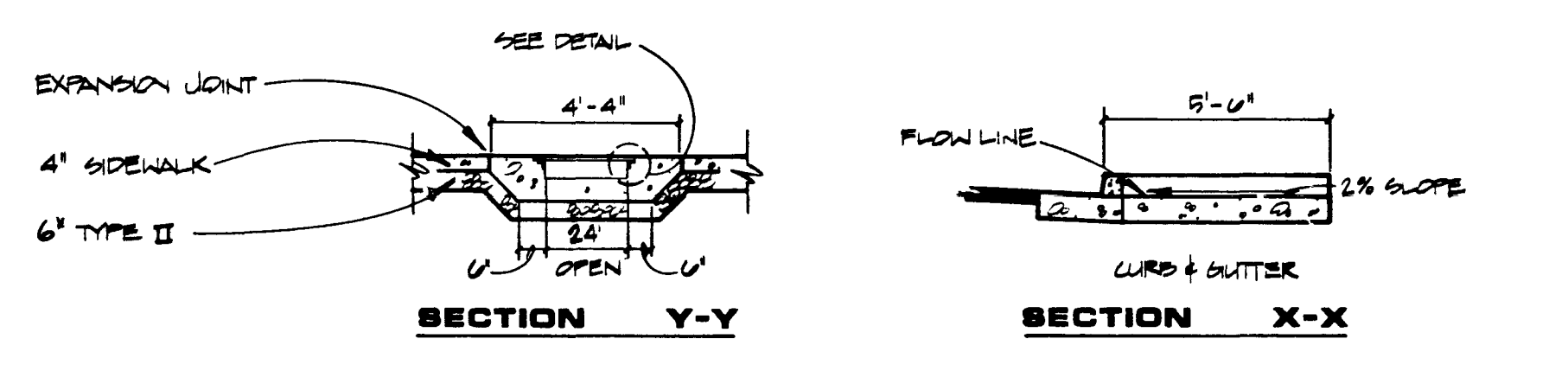
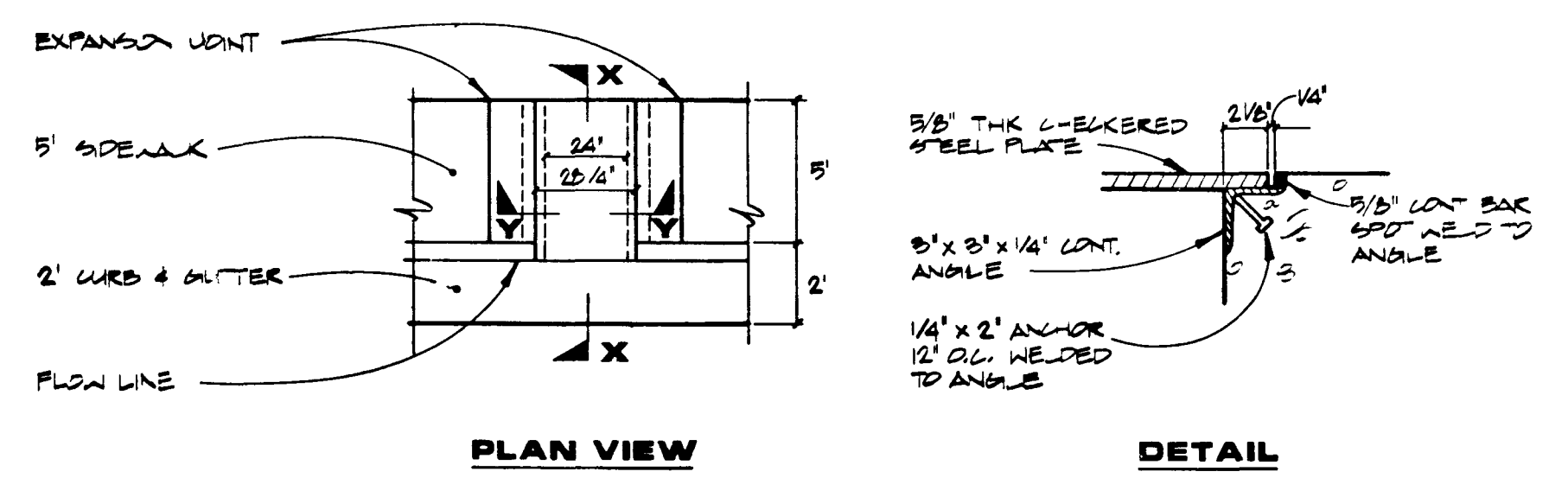
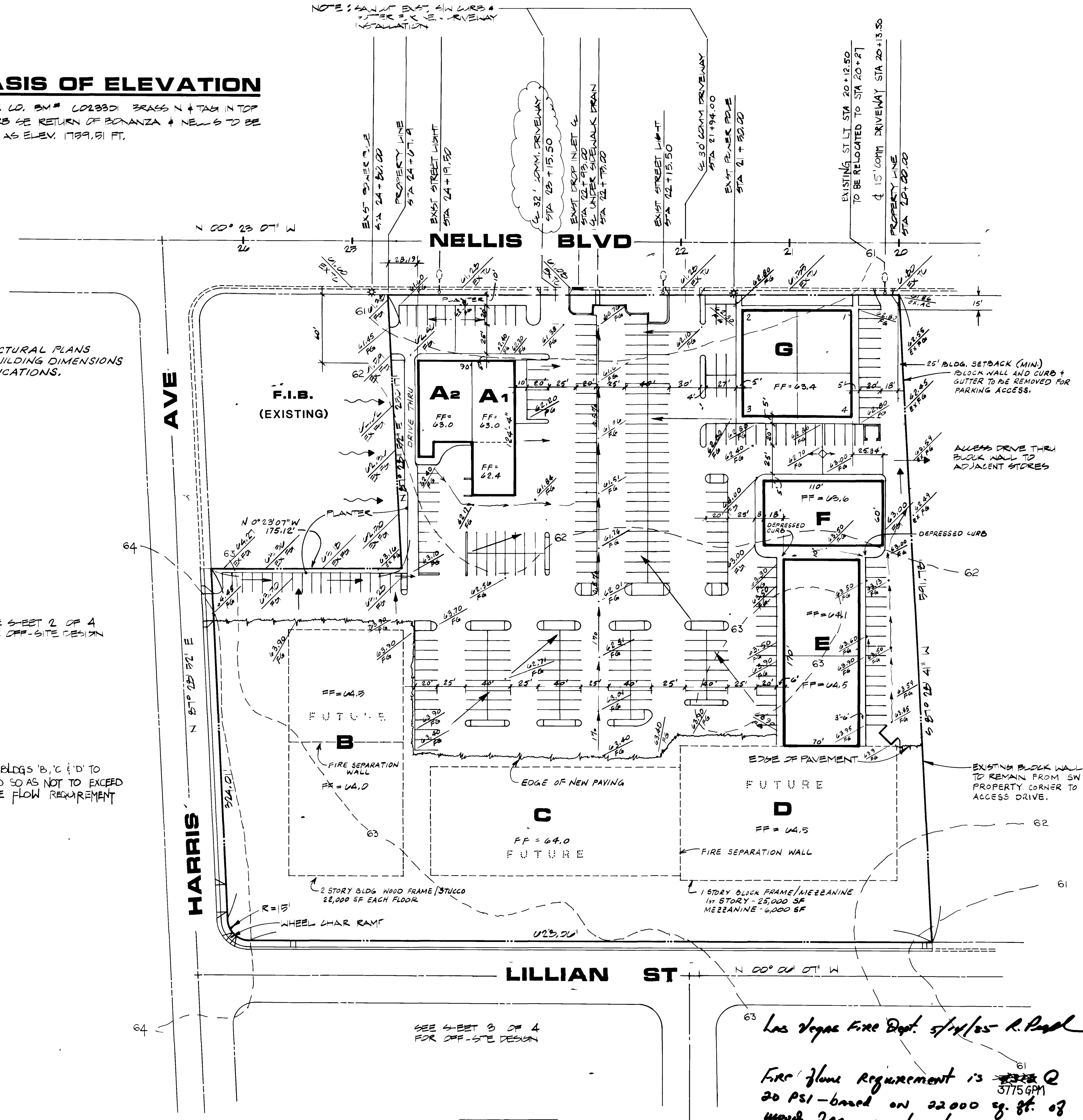
NOTE:  
SEE ARCHITECTURAL PLANS FOR EXACT BUILDING DIMENSIONS AND SPECIFICATIONS.

SEE SHEET 2 OF 4 FOR OFF-SITE DESIGN

NOTE: FUTURE BLDGS 'B', 'C' & 'D' TO BE DESIGNED SO AS NOT TO EXCEED 3715 GPM FIRE FLOW REQUIREMENT

SEE SHEET 3 OF 4 FOR OFF-SITE DESIGN

NOTE: SANITARY EXIST. SW CURB & GUTTER TO BE RELOCATED TO REVENUE



**SIDEWALK DRAIN DETAIL**

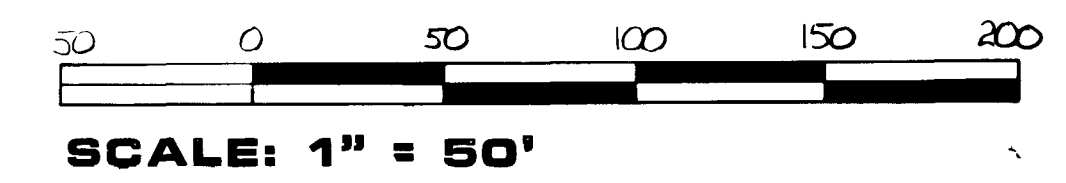
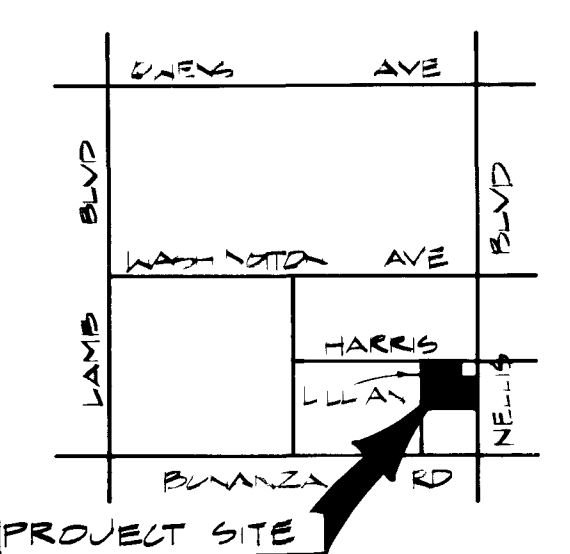
<i>Jimmy Hough</i>	8/2/85
CLV QUALITY CONTROL ENGINEER	DATE
<i>Gregory Rosen</i>	7/23/85
CLV ELECTRICAL CONSTRUCTION COORDINATOR	DATE
<i>John P. Hough</i>	7/18/85
TRAFFIC ENGINEER	DATE

N/A	
CLV SANITATION ENGINEER	DATE
<i>Gregory Rosen</i>	12-17-85
CLV ELECTRICAL SUPERVISOR	DATE
<i>Carl A. Ales</i>	24 FEB 1986
CLV CITY ENGINEER	DATE
<i>Rich Lavelle</i>	7-15-85
CLV FIRE MARSHAL	DATE

LAS VEGAS VALLEY WATER DISTRICT	DATE
<i>Greg W. Baskley</i>	5-20-85
NEVADA POWER	
<i>John P. Hough</i>	5-20-85
CLV - WEST SIDS	



Name of Plan NELLIS TRAIL  
Water plan as shown will be acceptable, if it is NOT approved for construction  
*Daniel J. Donnelly* 6/14/85  
LVVWD Date



Las Vegas Fire Dept. 5/14/85 R. Paul

Fire flow requirement is ~~3715~~ 3715 GPM based on 22000 sq. ft. of wood frame construction

**NELLIS TRAIL GRADING PLAN**

LAS VEGAS, NEVADA

NO	BY	DATE	DESCRIPTION	CHK'D	APP'D
1	MM	5/21/85	ISSUED FOR PERMITS		
2	MM	5/21/85	REVISED GRADING AND DRAINAGE		
3	MM	5/21/85	REVISED GRADING AND DRAINAGE		
4	MM	5/21/85	REVISED GRADING AND DRAINAGE		
5	MM	5/21/85	REVISED GRADING AND DRAINAGE		
6	MM	5/21/85	REVISED GRADING AND DRAINAGE		

CHILTON ENGINEERING  
ELKO LAS VEGAS RENO  
85010 1/4

47+1 2-8-3

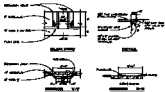
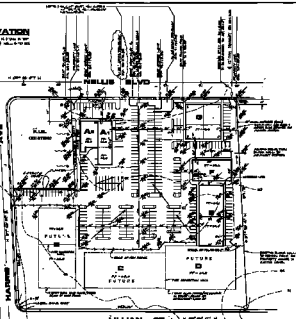
**BASE OF ELEVATION**

BASE OF ALL CURBS SHALL BE 1.5 FEET ABOVE THE FINISHED GRADE OF THE ADJACENT STREET. THE FINISHED GRADE SHALL BE AS SHOWN ON THE GRADE PLAN.

SEE GRADE PLAN FOR ELEVATIONS OF ALL CURBS AND SIDEWALKS.

SEE GRADE PLAN FOR ELEVATIONS OF ALL CURBS AND SIDEWALKS.

SEE GRADE PLAN FOR ELEVATIONS OF ALL CURBS AND SIDEWALKS.



**SIDEWALK GRAB DETAIL**

1.00' WIDE SIDEWALK	0.00
2.00' WIDE SIDEWALK	0.00
3.00' WIDE SIDEWALK	0.00
4.00' WIDE SIDEWALK	0.00
5.00' WIDE SIDEWALK	0.00
6.00' WIDE SIDEWALK	0.00
7.00' WIDE SIDEWALK	0.00
8.00' WIDE SIDEWALK	0.00
9.00' WIDE SIDEWALK	0.00
10.00' WIDE SIDEWALK	0.00

1.00' WIDE SIDEWALK	0.00
2.00' WIDE SIDEWALK	0.00
3.00' WIDE SIDEWALK	0.00
4.00' WIDE SIDEWALK	0.00
5.00' WIDE SIDEWALK	0.00
6.00' WIDE SIDEWALK	0.00
7.00' WIDE SIDEWALK	0.00
8.00' WIDE SIDEWALK	0.00
9.00' WIDE SIDEWALK	0.00
10.00' WIDE SIDEWALK	0.00



TO BE A PART OF THE GRADING PLAN.



**NELLIS TRAIL GRADING PLAN**

LAS VEGAS, NEVADA

DATE: 11/11/54

See Notes on Sheet 2 of 2 for details of all work shown hereon.

411 243