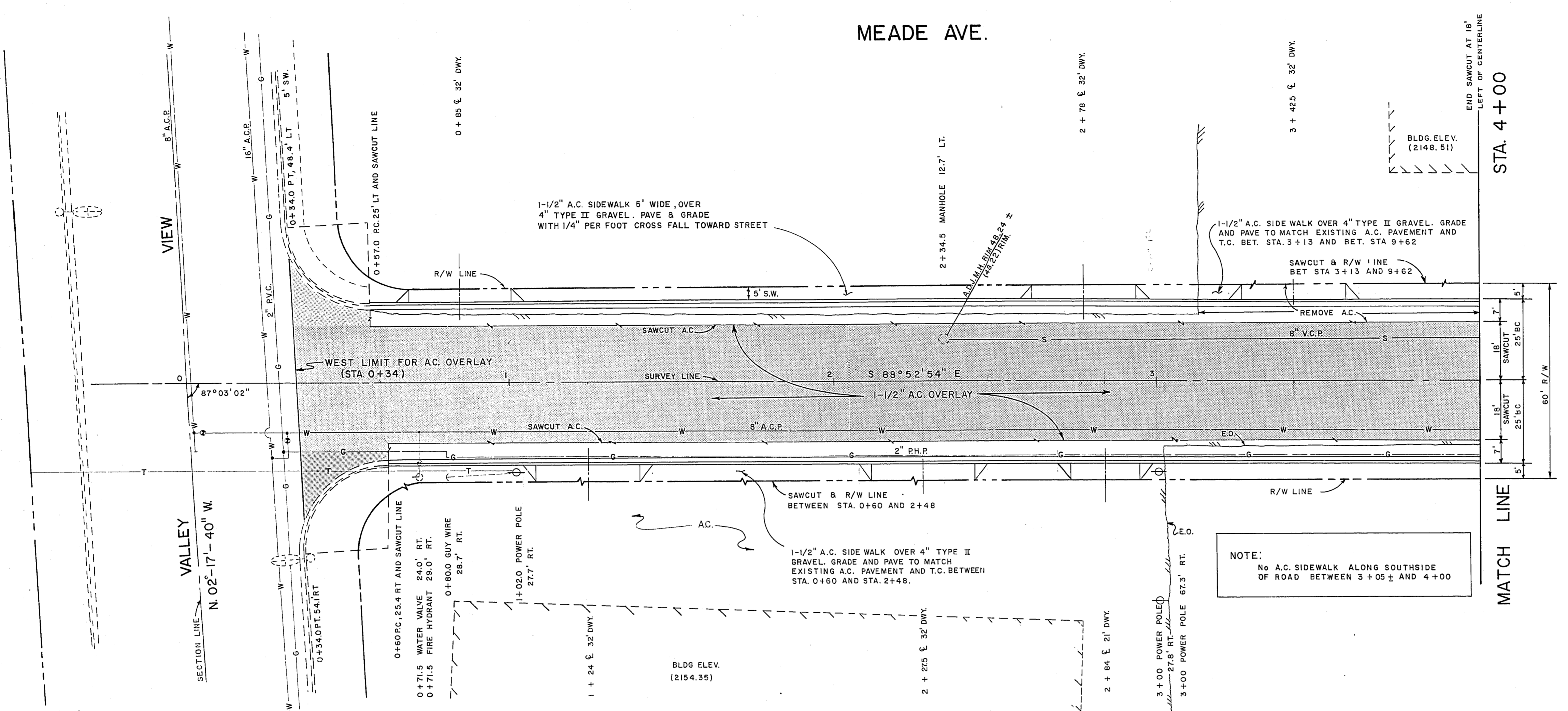


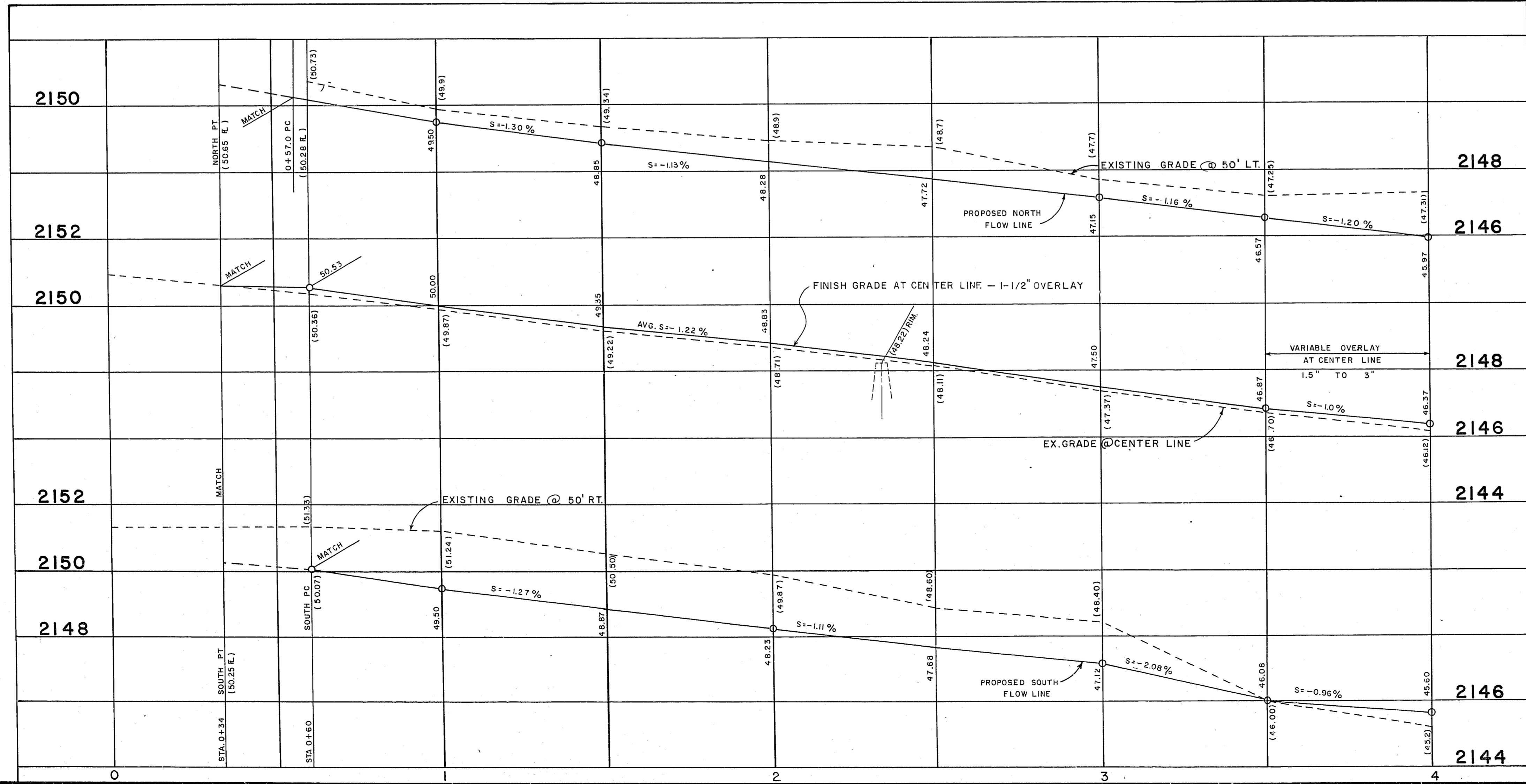
MEADE AVE.



APPROXIMATE QUANTITIES - THIS SHEET

ITEM No.	DESCRIPTION	C.L.V.	S.I.D.	UNIT	TOTAL
203.00.01	ROADWAY EXCAVATION	18	225	C.Y.	243
	SAWCUT A.C. PAV'T	273	692	L.F.	965
	REMOVE AC PAV'T	152	360	S.Y.	512
302.00.01	TYPE I GRAVEL BASE	-	96	C.Y.	96
302.00.02	TYPE II GRAVEL BASE	32	42	C.Y.	74
401.00.03A	1/2" ASPHALT CONC. OVERLAY	-	135	T.N.	135
401.00.03B	1-1/2" A.C. SIDE WALK	26	-	T.N.	26
401.00.06	3" ASPHALTIC CONCRETE	-	66	T.N.	66
413.00.01	24" "L" TYPE C. & G. 6" FACE	-	683	L.F.	683
609.03.02	ADJUST SEWER MANHOLE	1	-	Eq.	1
	TACK COAT	-	231	-	231
106.00.01	PRIME COAT	89	113	-	202
609.03.06	ADJUST WATER VALVE	-	-	Eq.	L.V.V.W.D
629.00.02	REMOVE & RELOCATE W.V.	-	-	Eq.	L.V.V.W.D
407.00.01	FOG SEAL	44	281	Gal.	325

Scale (h) 1" = 20' Scale (v) 1" = 2'
 Fid. bk. no. 77-4X Date
 Design by C. KAJKOWSKI Drawn by ARBERRY/RAMIREZ
 Approved by the Director of Public Services Date 4/19/79
John J. Harris



BENCH MARK
 B.M. 1617A17
 N.W. corner PENNWOOD
 & VALLEY VIEW
 ELEV. = 2152.54 ft.

AUG. 10, 1979

Department of Public Services Engineering Design Division
 STREET IMPROVEMENTS
 MEADE AVE S.I.D.
 VALLEY VIEW TO RANCHO
 STA. 0+00 TO 4+00
 Drawing no. 107-V1017 4/18