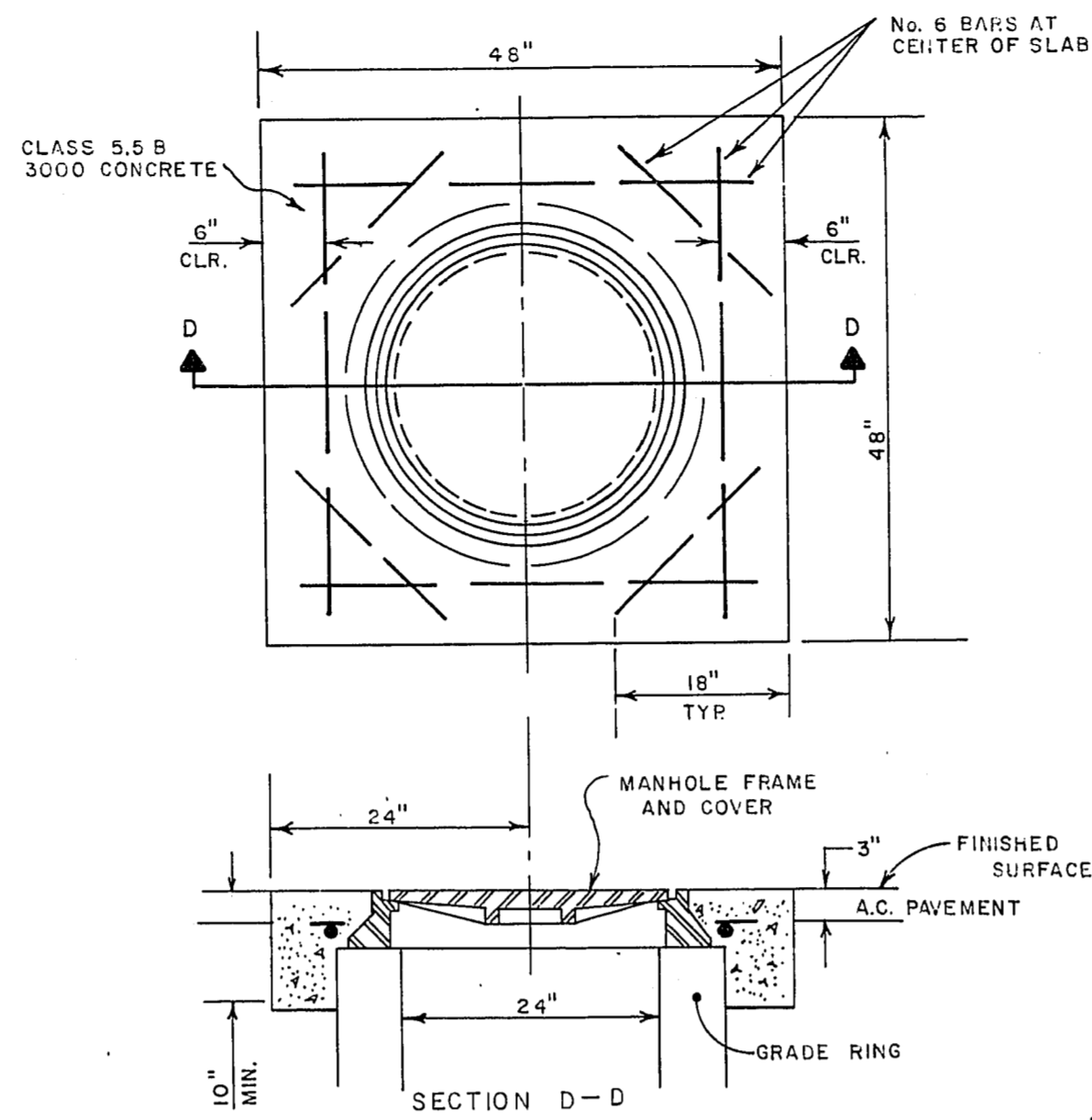
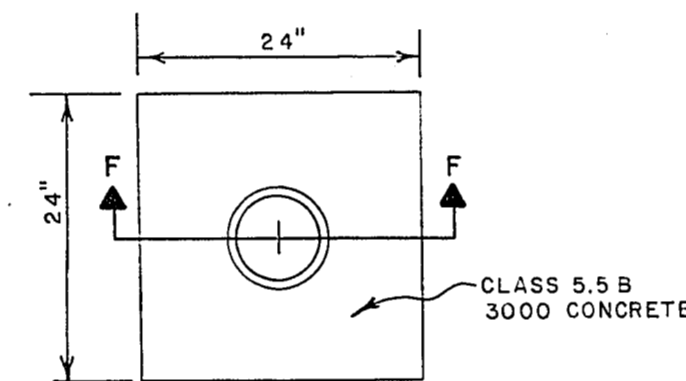


GENERAL NOTES

- ALL CONSTRUCTION SHALL BE IN ACCORDANCE WITH THE STANDARD DRAWINGS AND "UNIFORM STANDARD SPECIFICATIONS FOR PUBLIC WORKS CONSTRUCTION" ISSUED BY JANUARY 1966, OF THE CITY OF LAS VEGAS, NEVADA, UNLESS OTHERWISE SPECIFIED BY NOTE ON THE PLANS OR AS DIRECTED BY THE ENGINEER.
- ALL UTILITY COMPANIES SHALL BE NOTIFIED AT LEAST 48 HOURS PRIOR TO BEGINNING CONSTRUCTION.
- THE EXISTENCE AND LOCATION OF UNDERGROUND UTILITY PIPES OR STRUCTURES SHOWN ON PLANS FOR CONTRACTORS' CONVENIENCE WERE OBTAINED BY A SEARCH OF AVAILABLE RECORDS. THE CITY OF LAS VEGAS ASSUMES NO RESPONSIBILITY FOR UTILITIES OR STRUCTURES NOT OF RECORD, OR NOT IN THE LOCATION OF RECORD. THE CONTRACTOR'S LIABILITY REGARDING ANY DAMAGED UTILITY IS SET FORTH IN SECTION 16 OF THE STANDARD SPECIFICATIONS.
- THE CONTRACTOR IS REQUIRED TO TAKE PRECAUTIONARY MEASURES TO PROTECT ALL EXISTING STREET IMPROVEMENTS REMAINING IN PLACE, AND ANY STREET IMPROVEMENTS OR STRUCTURES DAMAGED BY THE CONTRACTOR SHALL BE REPAIRED OR RECONSTRUCTED AT THE EXPENSE OF THE CONTRACTOR.
- THE CONTRACTOR SHALL NOT REMOVE ANY EXISTING IMPROVEMENTS, TREES, SHRUBS, WALLS, FENCES, SIGNS, STRUCTURES, PRIVATE LIGHT POLES, ETC., UNLESS DIRECTED TO DO SO BY NOTE ON THE PLANS OR BY THE ENGINEER.
- EXISTING IMPROVEMENTS, TREES, SHRUBS, WALKS, FENCES, SIGNS, STRUCTURES, ETC. WITHIN THE STREET RIGHT-OF-WAY THAT WILL INTERFERE WITH CONSTRUCTION SHALL BE REMOVED BY THE CONTRACTOR AS DIRECTED BY THE ENGINEER.
- ALL REPLACEMENT, RELOCATION OR RECONSTRUCTION OF EXISTING IMPROVEMENTS, FENCES, SPRINKLER SYSTEMS, SHRUBS, WALLS, SIGNS, STEPS, SIDEWALKS, DRIVEWAYS, PRIVATE LIGHT POLES AND ALL OTHER OBJECTS PERTINENT TO THIS CONTRACT SHALL BE DONE AS DIRECTED BY THE ENGINEER.
- THE CONTRACTOR SHALL BACKFILL, GRADE AND CLEAN-UP ALL CUT OR FILL SLOPES TO MEET EXISTING CONDITIONS. WHERE LAWNS ARE EXISTING THE CONTRACTOR SHALL RESEED AND/OR SOIL THE AFFECTED AREA TO ACHIEVE A CONDITION EQUAL TO, OR BETTER THAN BEFORE. MAXIMUM SLOPE-4 TO 1, COSTS TO BE INCLUDED IN PRICE BID ON OTHER ITEMS.
- ALL BARRICADING AND TEMPORARY TRAFFIC CONTROL DEVICES OR METHODS TO BE USED DURING CONSTRUCTION SHALL BE DONE IN ACCORDANCE WITH THE STATE OF NEVADA "TRAFFIC CONTROL MANUAL" ISSUE OF JULY, 1976, AVAILABLE FROM THE DIVISION OF TRAFFIC ENGINEERING, 400 E. STEWART AVENUE.
- THE OWNERS UTILITY COMPANY SHALL BE RESPONSIBLE FOR REMOVAL OR RELOCATION OF ALL POWER POLES, TELEPHONE POLES, JOINTLY-OWNED POLES AND RELATED APPURTENANCES THAT INTERFERE WITH REQUIRED IMPROVEMENTS AS SHOWN ON THE PLANS, AND IN ACCORDANCE WITH THE "STANDARD SPECIFICATIONS".
- THE LAS VEGAS VALLEY WATER DISTRICT SHALL BE RESPONSIBLE FOR THE REMOVAL OR RELOCATION OF ALL WATER LINES AND RELATED APPURTENANCES THAT INTERFERE WITH REQUIRED IMPROVEMENTS AS SHOWN ON THE PLANS AND IN ACCORDANCE WITH CITY OF LAS VEGAS STANDARD DRAWING NO. 56.05 AND 56.06, ADJUST WATER MANHOLES TO FINISHED GRADE.
- THE CONTRACTOR SHALL NOTIFY THE UNITED STATES POST OFFICE REGARDING THE NECESSITY OF REMOVING AND RELOCATING ALL U.S. MAILBOXES THAT INTERFERE WITH THE REQUIRED IMPROVEMENTS AS SHOWN ON THE PLANS.
- THE CONTRACTOR SHALL BE RESPONSIBLE FOR THE VERTICAL ADJUSTMENT OF SANITARY SEWER MANHOLES TO THE REQUIRED GRADE AS SHOWN ON THE PLANS AND IN ACCORDANCE WITH SECTION 301.5, 334.6, AND APPLICABLE PORTIONS OF SECTION 512 OF THE "STANDARD SPECIFICATIONS".
- THE SOUTHWEST GAS COMPANY SHALL BE RESPONSIBLE FOR THE REMOVAL OR RELOCATION OF ALL GAS LINES AND RELATED APPURTENANCES THAT INTERFERE WITH REQUIRED IMPROVEMENTS AS SHOWN ON THE PLANS.
- THE CENTRAL TELEPHONE COMPANY SHALL BE RESPONSIBLE FOR THE VERTICAL ADJUSTMENT OF ALL CENTRAL TELEPHONE CO. MANHOLES TO THE REQUIRED FINISHED GRADE AS SHOWN ON THE PLANS.
- PRIOR TO ANY TYPE OF CONSTRUCTION IN THE AREA OF AN EXISTING SEWER, THE CONTRACTOR SHALL PROVIDE ADEQUATE PROTECTION TO THE MAIN IN THE FORM OF A SPLIT CIRCLE OF MINIMUM 3/4" PLYWOOD HAVING A DIAMETER NOT MORE THAN 4" SMALLER THAN THE INSIDE DIAMETER AT THE BOTTOM OF THE MANHOLE. THE SECTIONS OF THE CIRCLE SHALL BE HELD IN PLACE BY A MINIMUM OF TWO SCABS NAILED SECURELY ACROSS THE JOINT. THE JOINT SHALL BE PLACED TRANSVERSELY TO THE FLOW LINE OF THE MAIN. ANY SUBSTITUTE METHOD OF PROTECTION MAY BE USED PROVIDED IT IS APPROVED BY THE ENGINEER. THE CITY SHALL ROD THE SEWER LINE PRIOR TO CONSTRUCTION AND THE CONTRACTOR SHALL BALL AND CLEAN THE SEWER LINE PRIOR TO FINAL ACCEPTANCE OF THE PROJECT BY THE CITY.
- TYPE V CEMENT SHALL BE USED IN ALL CONCRETE, UNLESS OTHERWISE SPECIFIED



CONCRETE MANHOLE COLLAR
SCALE 3/4" = 1'



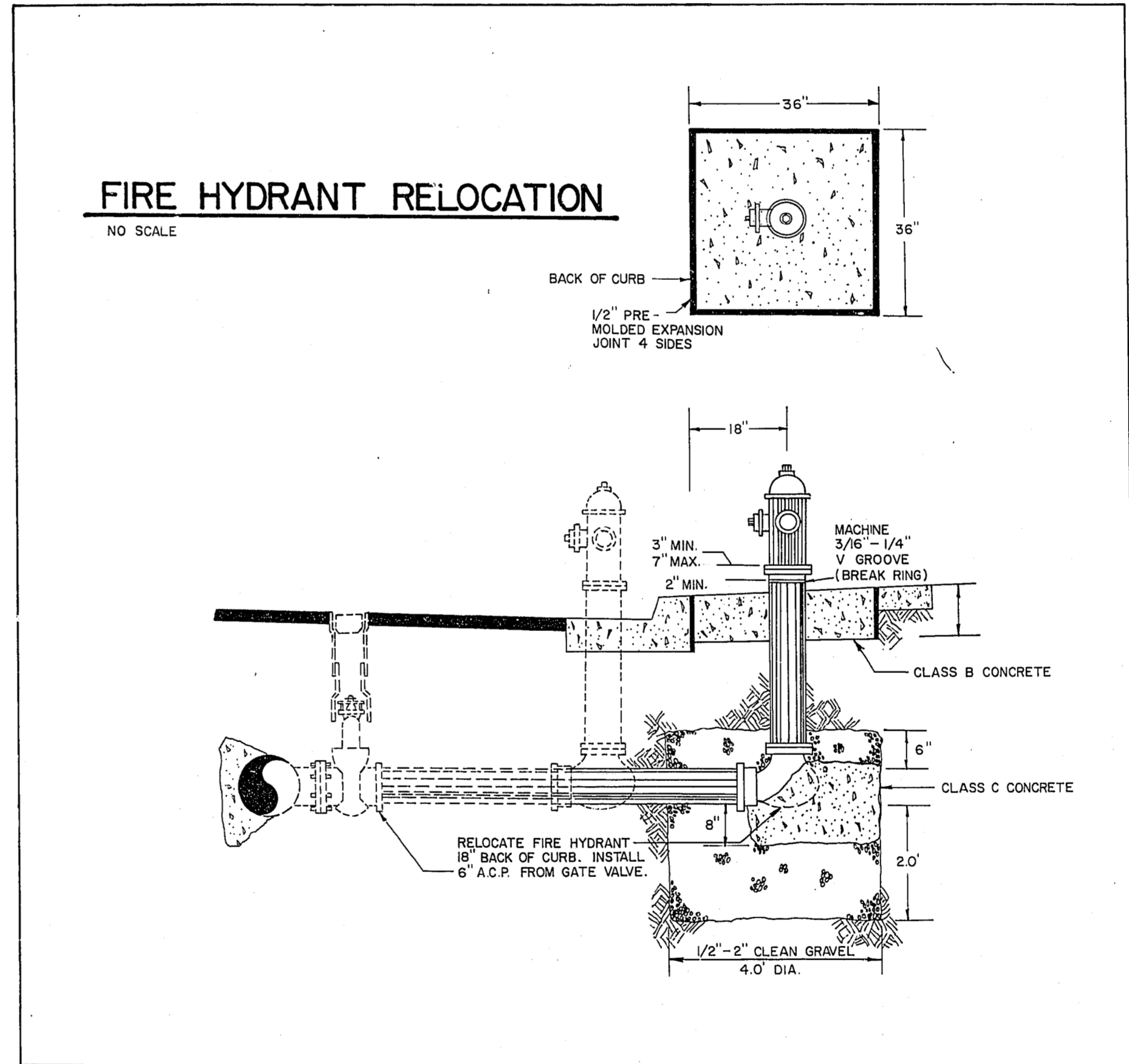
CONCRETE WATER VALVE COLLAR
SCALE 3/4" = 1'

LEGEND

- 1+00 SURVEY LINE WITH STATION
- RIGHT OF WAY
- EXISTING EDGE OF OIL
- EXISTING CURB & GUTTER
- EXISTING MANHOLE
- EXISTING BUILDING
- EXISTING A.C. TO BE OVERLAYED
- EXISTING A.C.
- PROP. CURB, GUTTER & A.C. S/W.
- SAWCUT A.C.
- EXISTING WATER LINE
- EXISTING GAS LINE
- EXISTING SEWER LINE
- EXISTING TELEPHONE LINE
- GAS OR WATER VALVE
- POWER POLE W/GUY WIRE
- WATER METER
- FIRE HYDRANT

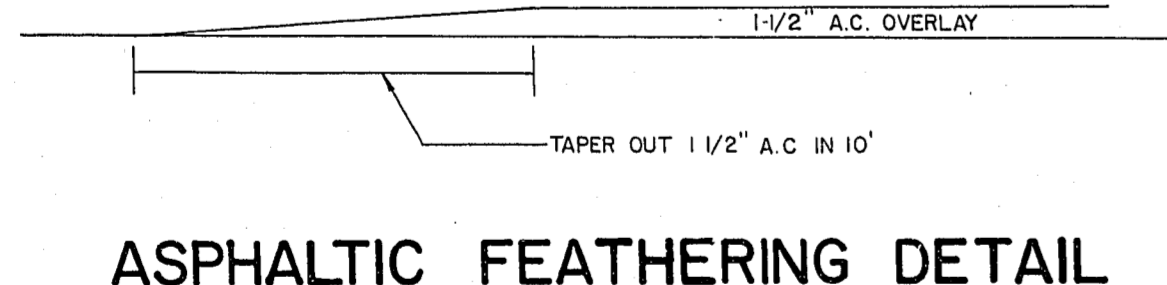
| APPROXIMATE TOTAL QUANTITIES - MEADE AVE | | | | |
|--|------------------------------|--------|-------------|------------|
| ITEM No. | DESCRIPTION | C.L.V. | S.I.D. UNIT | TOTAL |
| 202.00.01 | CONCRETE REMOVAL | 250 | S.F. | 250 |
| 203.00.01 | ROADWAY EXCAVATION | 601 | 6464 C.Y. | 7065 |
| | SAWCUT A.C. PAV'T | 1833 | 2670 L.F. | 4503 |
| | REMOVE A.C. PAV'T | 1686 | 3820 S.Y. | 5506 |
| 302.00.01 | TYPE I GRAVEL BASE | | 2723 C.Y. | 2723 |
| 302.00.02 | TYPE II GRAVEL BASE | 333 | 1584 C.Y. | 1917 |
| 401.00.03A | 1-1/2" ASPHALT CONC. OVERLAY | | 307 T.N. | 307 |
| 401.00.03B | 1-1/2" A.C. SIDE WALK | 259 | T.N. | 259 |
| 401.00.06 | 3" ASPHALTIC CONCRETE | | 2498 T.N. | 2498 |
| 613.00.01 | 24" "L" TYPE C. & G. 6" FACE | | 6240 L.F. | 6240 |
| 340.319 | CONCRETE VALLEY GUTTER | | 2040 S.F. | 2040 |
| 609.03.02 | ADJUST SEWER MANHOLE | 9 | EA. | 9 |
| | TACK COAT | | 526 GAL. | 526 |
| 406.00.01 | PRIME COAT | 816 | 4332 GAL. | 5148 |
| 609.03.06 | ADJUST WATER VALVE | | EA. | L.V.V.W.D. |
| 629.00.02 | REMOVE & RELOCATE W.V. | | EA. | L.V.V.W.D. |
| 629.00.01 | RELOCATE FIRE HYDRANT | 1 | EA. | 1 |
| 407.00.01 | FOG SEAL | 442 | 2655 GAL. | 3097 |
| 613.00.08 | 4" CONCRETE SIDEWALK | | 250 S.F. | 250 |
| 609.03.07 | ADJUST GAS VALVE | | EA. | 1 SW.G.C. |

W.O. no. 4240
Scale (V) NONE
Scale (H) NONE
Fid. bk. no. 77-4X
Date
Design by C. KAJKOWSKI
Drawn by ARBERRY/RAIMIREZ
Approved by the Director of Public Services
Date 4/20/79

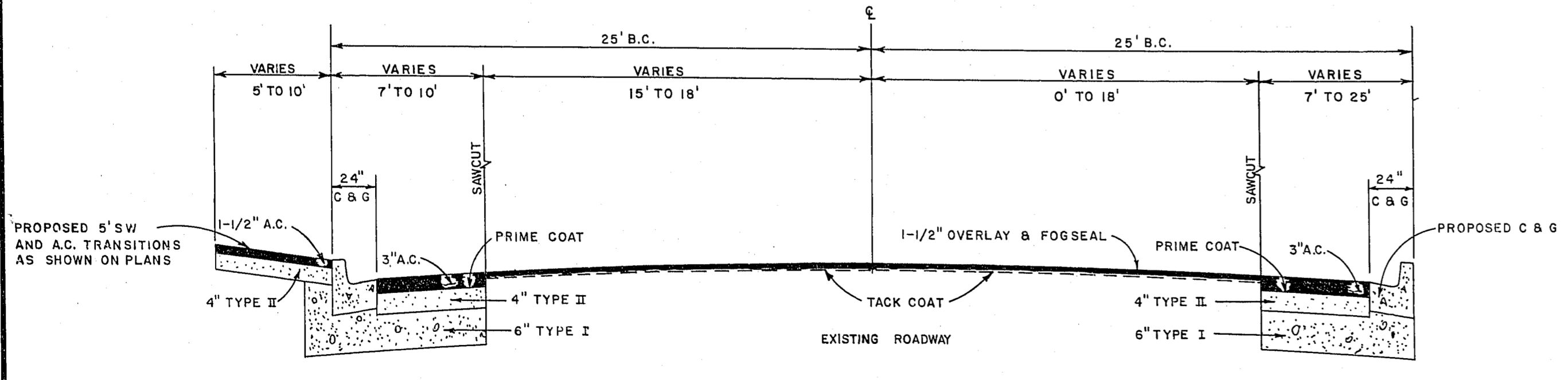


FIRE HYDRANT RELOCATION
NO SCALE

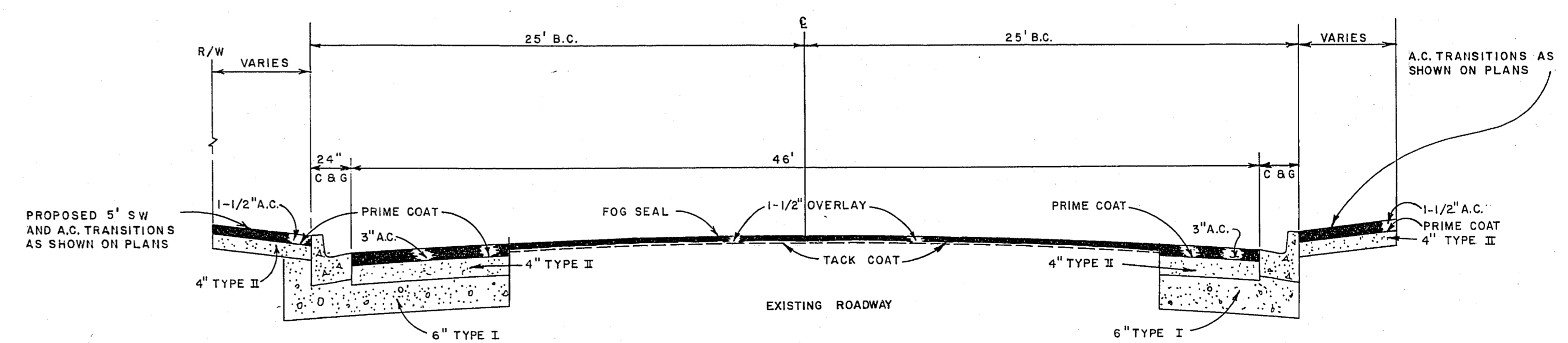
CONTRACT DRAWING
AUG. 10, 1979



ASPHALTIC FEATHERING DETAIL



TYPICAL SECTION - STA. 0+60 TO STA. 13+50



TYPICAL SECTION - STA. 13+50 TO STA. 34+02

Department of Public Services
Engineering Design Division
GENERAL NOTES
TYPICAL STREET SECTIONS
SUMMARY OF QUANTITIES
MEADE AVE S.I.D.
VALLEY VIEW TO RANCHO

