

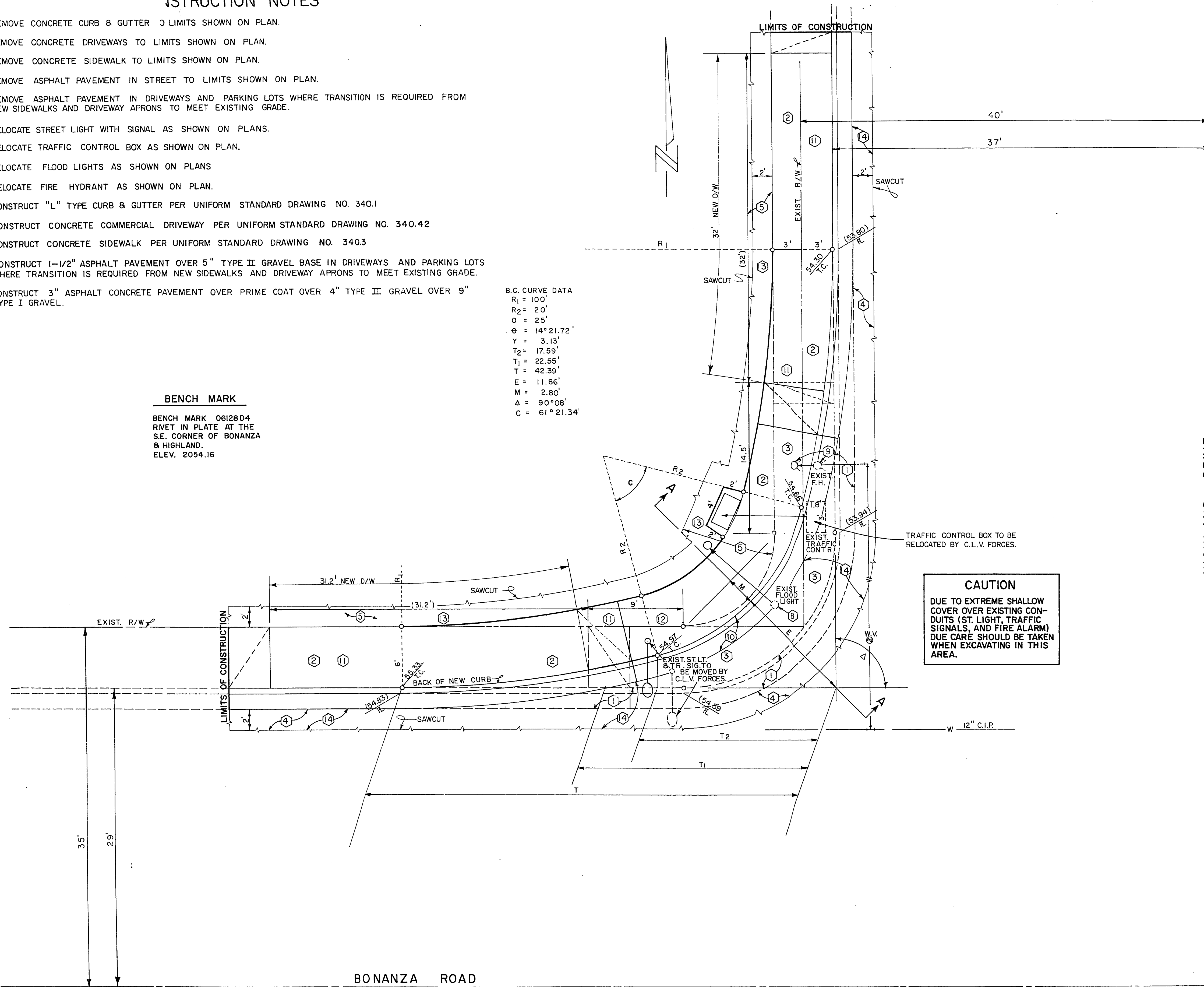
INSTRUCTION NOTES

- ① REMOVE CONCRETE CURB & GUTTER TO LIMITS SHOWN ON PLAN.
- ② REMOVE CONCRETE DRIVEWAYS TO LIMITS SHOWN ON PLAN.
- ③ REMOVE CONCRETE SIDEWALK TO LIMITS SHOWN ON PLAN.
- ④ REMOVE ASPHALT PAVEMENT IN STREET TO LIMITS SHOWN ON PLAN.
- ⑤ REMOVE ASPHALT PAVEMENT IN DRIVEWAYS AND PARKING LOTS WHERE TRANSITION IS REQUIRED FROM NEW SIDEWALKS AND DRIVEWAY APRONS TO MEET EXISTING GRADE.
- ⑥ RELOCATE STREET LIGHT WITH SIGNAL AS SHOWN ON PLANS.
- ⑦ RELOCATE TRAFFIC CONTROL BOX AS SHOWN ON PLAN.
- ⑧ RELOCATE FLOOD LIGHTS AS SHOWN ON PLANS
- ⑨ RELOCATE FIRE HYDRANT AS SHOWN ON PLAN.
- ⑩ CONSTRUCT "L" TYPE CURB & GUTTER PER UNIFORM STANDARD DRAWING NO. 340.1
- ⑪ CONSTRUCT CONCRETE COMMERCIAL DRIVEWAY PER UNIFORM STANDARD DRAWING NO. 340.42
- ⑫ CONSTRUCT CONCRETE SIDEWALK PER UNIFORM STANDARD DRAWING NO. 340.3
- ⑬ CONSTRUCT 1-1/2" ASPHALT PAVEMENT OVER 5" TYPE II GRAVEL BASE IN DRIVEWAYS AND PARKING LOTS WHERE TRANSITION IS REQUIRED FROM NEW SIDEWALKS AND DRIVEWAY APRONS TO MEET EXISTING GRADE.
- ⑭ CONSTRUCT 3" ASPHALT CONCRETE PAVEMENT OVER PRIME COAT OVER 4" TYPE II GRAVEL OVER 9" TYPE I GRAVEL.

BENCH MARK

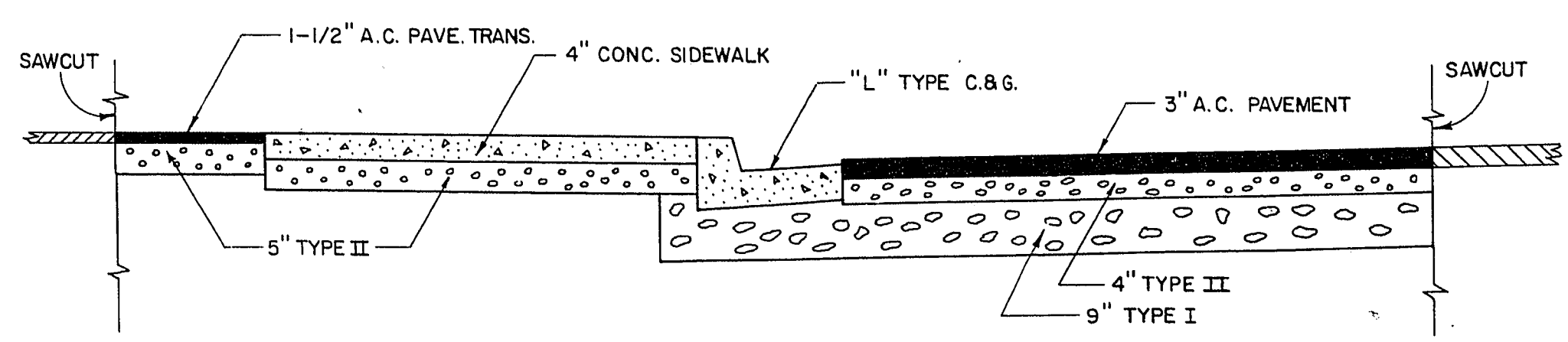
BENCH MARK 0612804
RIVET IN PLATE AT THE
S.E. CORNER OF BONANZA
& HIGHLAND.
ELEV. 2054.16

B.C. CURVE DATA
R₁ = 100'
R₂ = 20'
O = 25'
φ = 14° 21.72'
Y = 3.13'
T₂ = 17.59'
T₁ = 22.55'
T = 42.39'
E = 11.86'
M = 2.80'
Δ = 90° 08'
C = 61° 21.34'



CAUTION
DUE TO EXTREME SHALLOW COVER OVER EXISTING CONDUITS (ST. LIGHT, TRAFFIC SIGNALS, AND FIRE ALARM) DUE CARE SHOULD BE TAKEN WHEN EXCAVATING IN THIS AREA.

CONST. NOTE NO.	APPROXIMATE QUANTITIES — THIS SHEET			
	ITEM	DESCRIPTION	UNIT	QUANTITY
①	201.100	REMOVE "L" TYPE C. & G.	L.F.	41
②	201.100	REMOVE COMM. DRIVEWAY	S.F.	602
③	201.100	REMOVE CONC. SIDEWALK	S.F.	218
④⑤	201.100	REMOVE A.C. PAVEMENT	S.Y.	65
	201.100	SAWCUT A.C. PAVEMENT	L.F.	228
⑧	400.900	RELOCATE FLOOD LIGHTS	EA.	1
⑨	560.080	RELOCATE FIRE HYDRANT	EA.	1
⑩	340.014	"L" TYPE C. & G.	L.F.	32
⑪	340.226	COMM. DRIVEWAY	S.F.	618
⑫	340.114	CONC. SIDEWALK	S.F.	174
⑬	334.003	1-1/2" A.C. PAVE. TRANSITION	S.Y.	22
⑭	334.006	3" A.C. PAVEMENT	S.Y.	47
⑪⑫⑬⑭	302.200	TYPE II GRAVEL	C.Y.	23
⑩⑪⑭	302.100	TYPE I GRAVEL	C.Y.	26
	201.100	EXCAVATION	C.Y.	54



SECTION A-A
SCALE - 1" = 2'

[Signatures]
SOUTHWEST GAS COMPANY.
LAS VEGAS VALLEY WATER DISTRICT. 7-21-70
CENTRAL TELEPHONE COMPANY.
NEVADA POWER COMPANY.
CHIEF DESIGN ENG., CITY OF LAS VEGAS. 6/18/70
FIRE CHIEF, CITY OF LAS VEGAS. 6/18/70
TRAFFIC ENG., CITY OF LAS VEGAS. 6/18/70

CONTRACT DRAWING
JUL 31 1970

[Signatures]
ASS'T. DIR. PUBLIC WORKS, CITY OF LAS VEGAS. DATE: 7/23/70
CONST. DIV. ENG., CITY OF LAS VEGAS. DATE: 7-22-70
SERVICES DIV. ENG., CITY OF LAS VEGAS. DATE: 7/22/70

EXCEPT AS NOTED THIS DRAWING WAS PREPARED UNDER MY SUPERVISION.
DATE: 7/21/70

CITY OF LAS VEGAS NEVADA
DEPARTMENT OF PUBLIC WORKS
SERVICES DIVISION
NORTHWEST CORNER OF BONANZA ROAD AND HIGHLAND DRIVE

W.O. NO.	E.B.K. NO.	DATE	DRAWING NO.
SC.(H) 1" = 5'	SC.(V)	5/4/70	107V-823
DES. W. JAUBERT		FILE NO.	
DR. M. PATTERSON		APPROVED BY DIRECTOR OF PUBLIC WORKS	

SHEET 1 OF 1

17-4-140