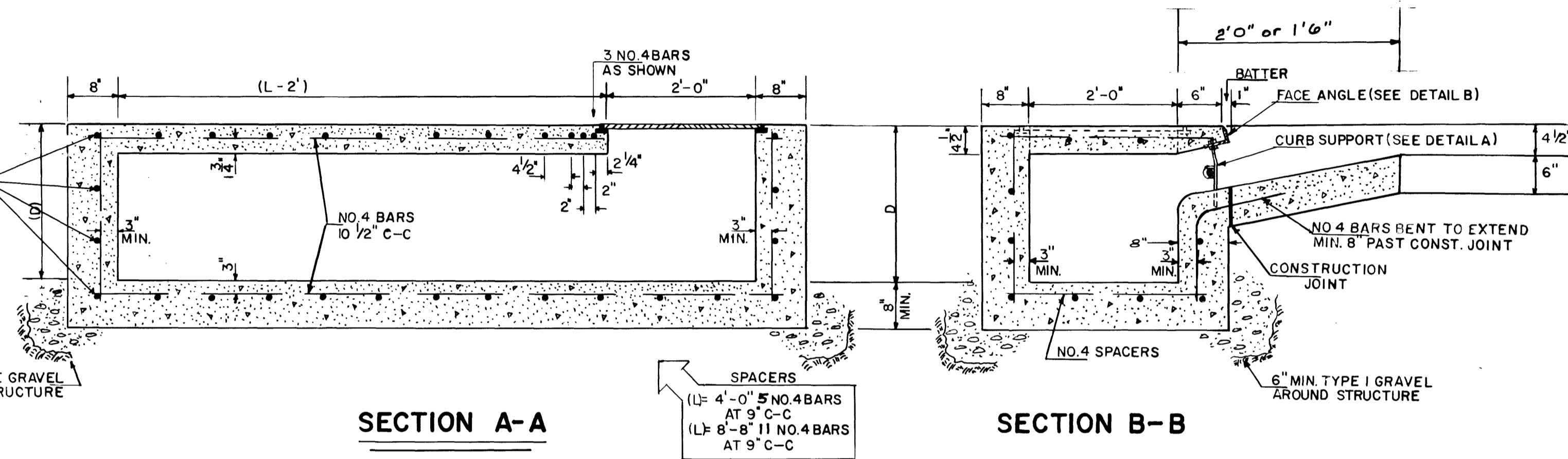


SECTION C-C

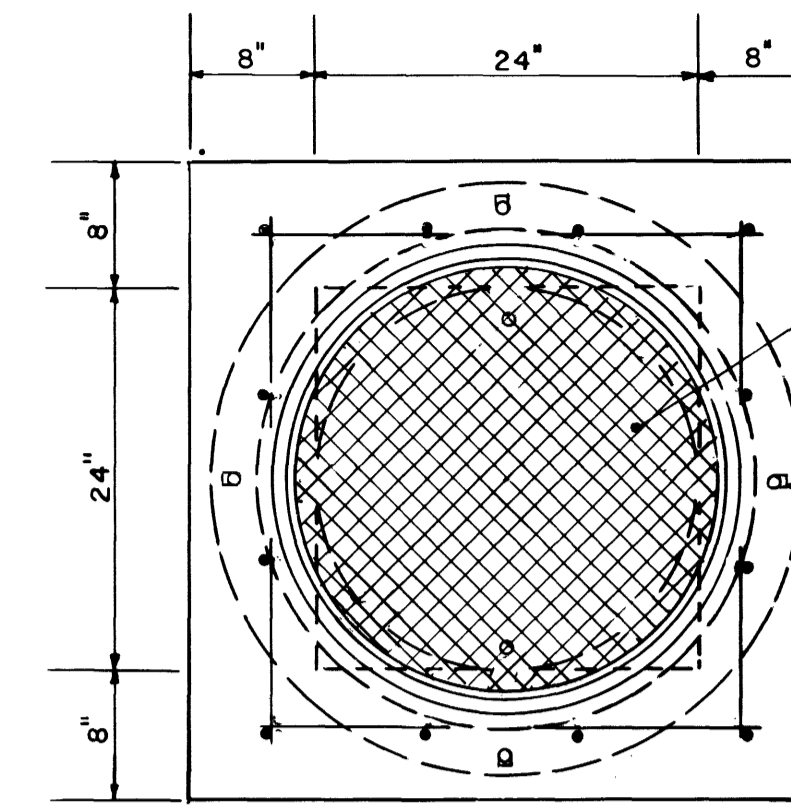
NO. 4 BARS	
INLET NO.	BAR REQ'D.
7	4
1, 2, 3, 4	5
13	6
5, 8, 9, 10, 11, 12	7
2, 9A, 9B	8

ALL BARS TO BE EVENLY SPACED WITH 9" C-C MAX



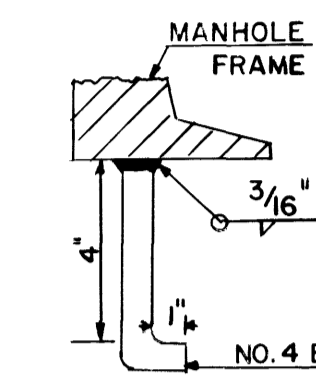
SECTION A-A

SECTION B-B

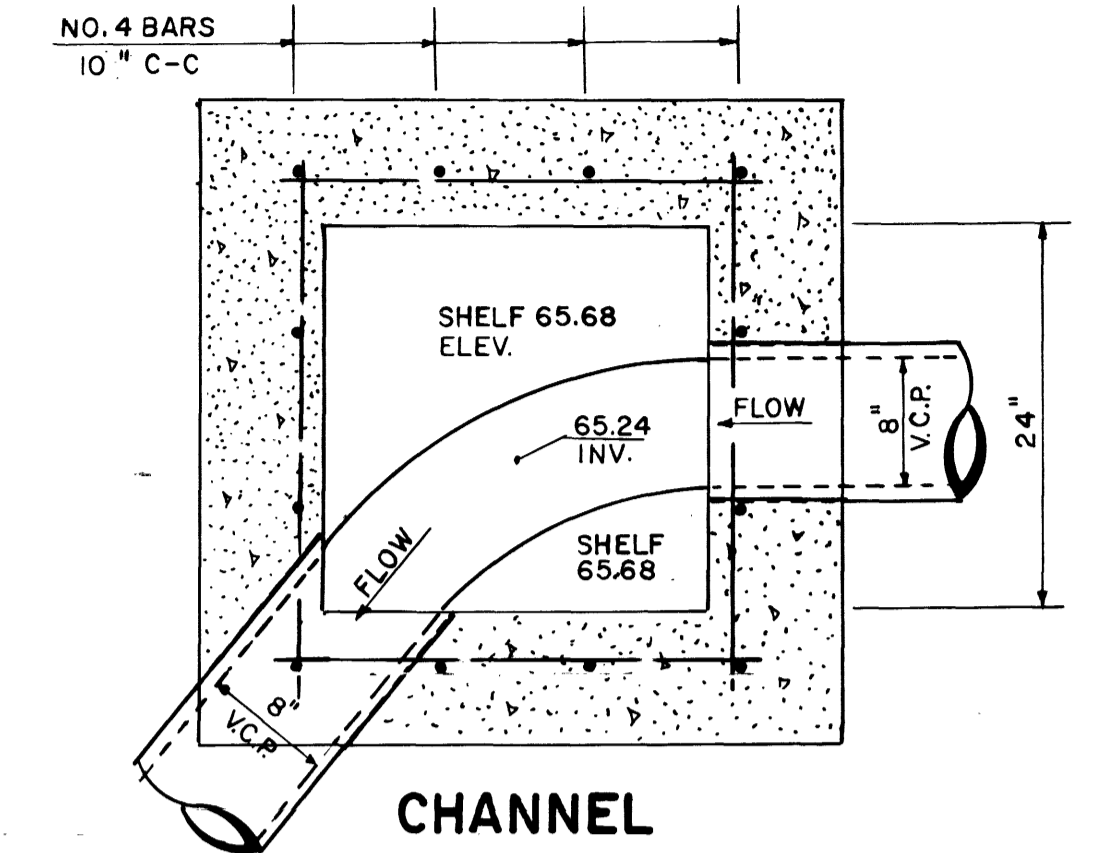


TOP VIEW

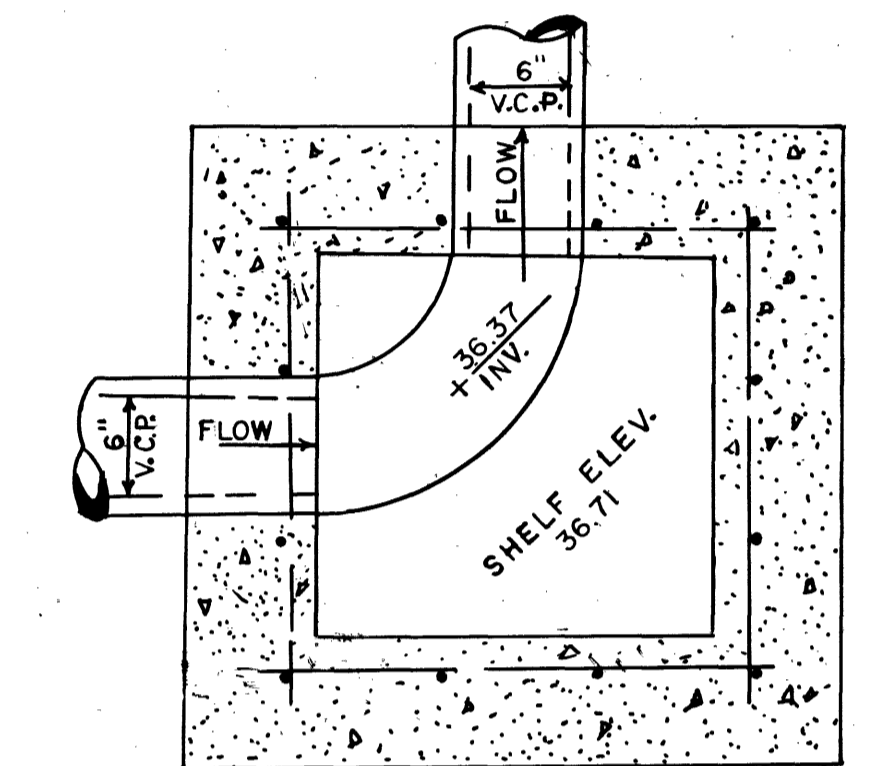
MANHOLE FRAME AND COVER
ALHAMBRA FOUNDRY CO.
STRUCTURE NO. 1
SERIES A-1260
PLATE NO. 1264
STRUCTURE NO. 2
SERIES A-1250
PLATE NO. A-1254



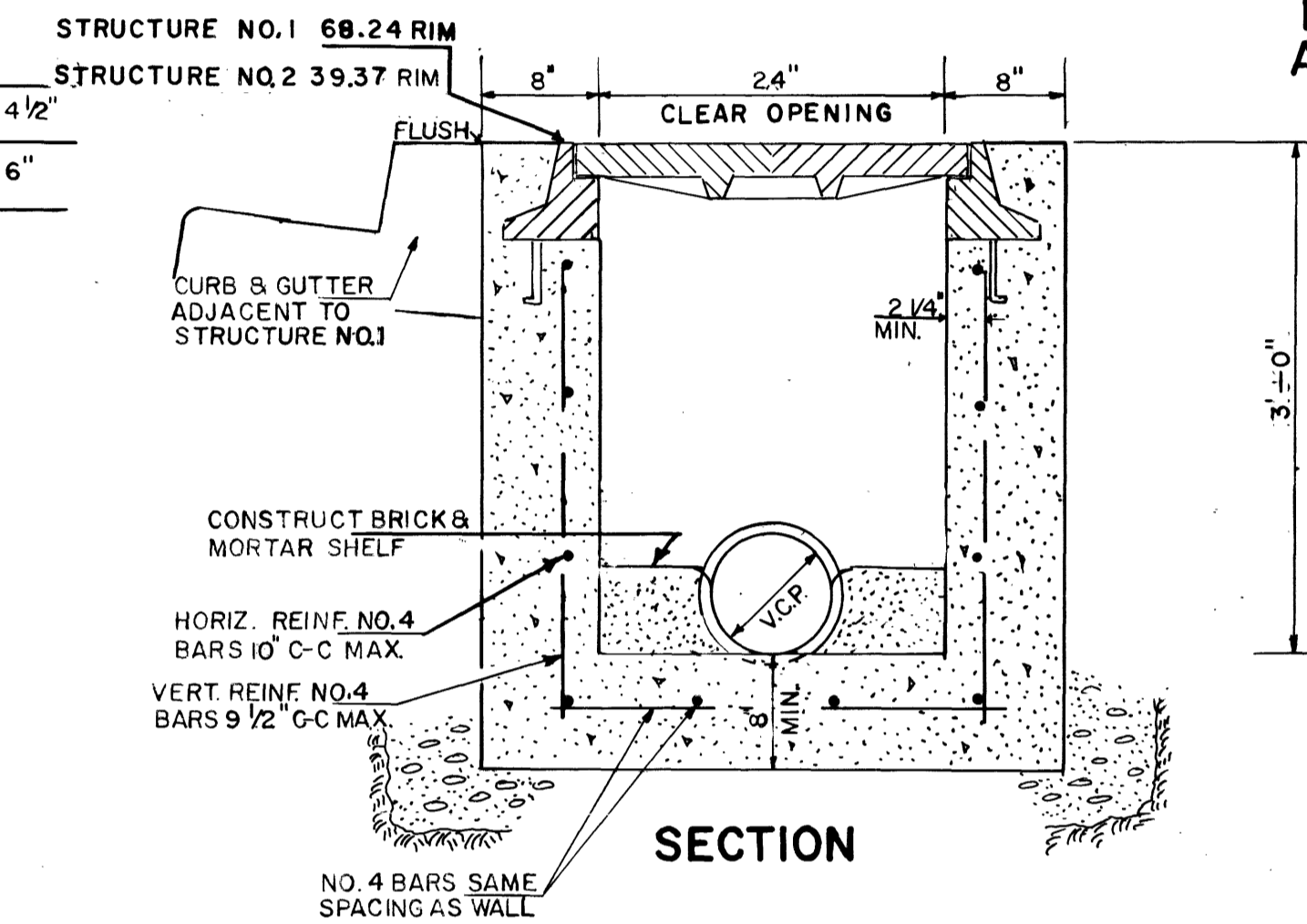
FRAME ANCHOR



CHANNEL
STRUCTURE NO. 1
SEE SHEET 13



CHANNEL
STRUCTURE NO. 2
SEE SHEET 30

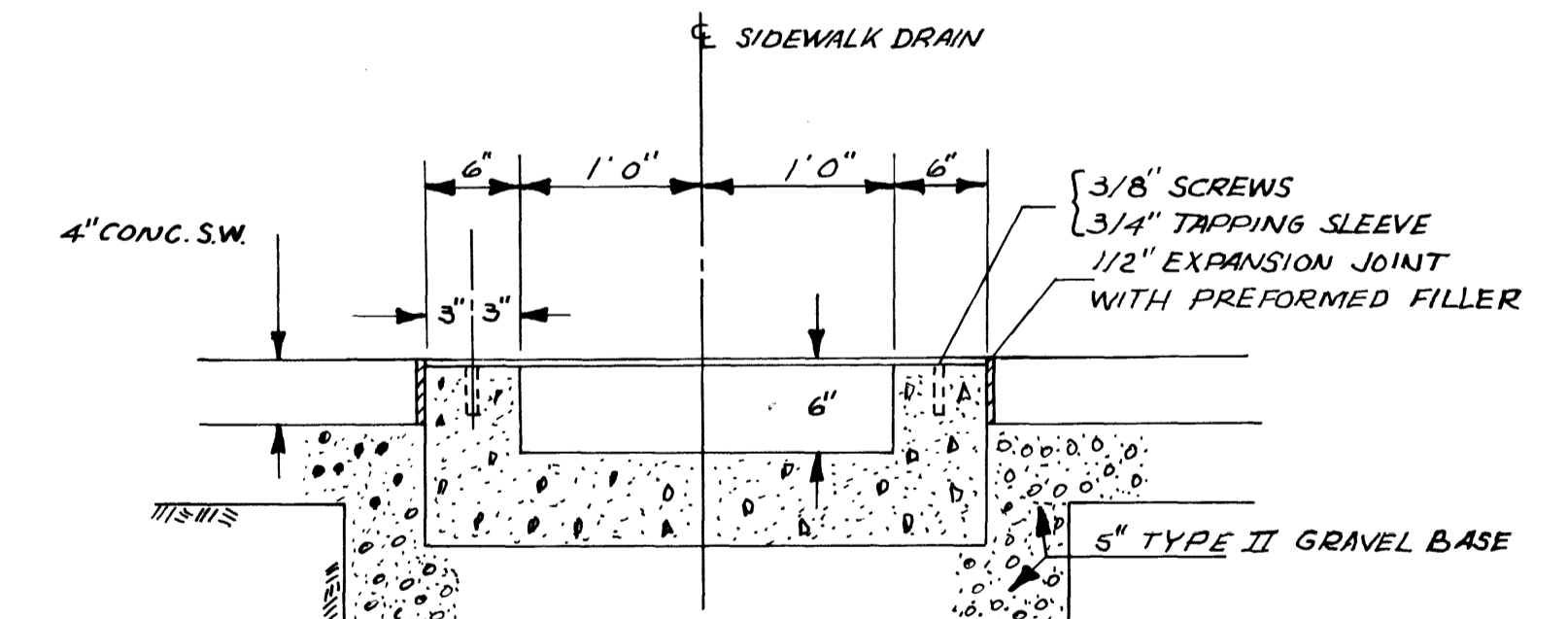


SECTION

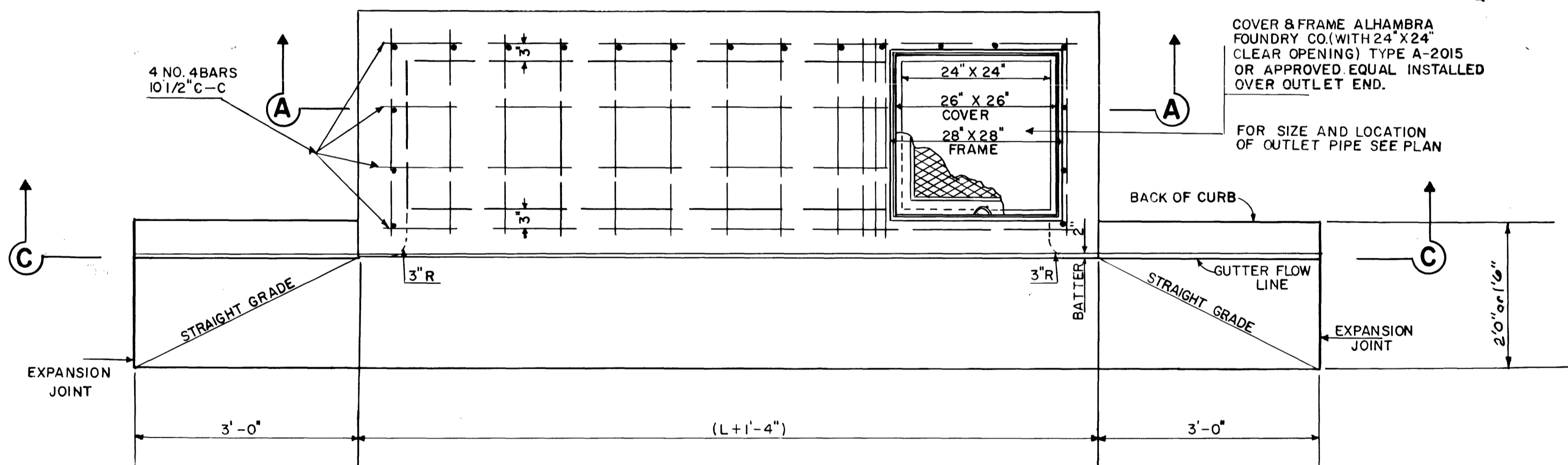
STORM DRAIN
JUNCTION STRUCTURE NO. 1 & 2

INLET NO.	L	D	CU. YDS. CONC.	WT. STL. IN LBS.
1	4'-0"	3'-0"	1.60	130
2	4'-0"	5'-6"	2.80	287
3	8'-8"	3'-6"	3.20	202
4	4'-0"	3'-0"	1.60	130
5	4'-0"	4'-6"	2.39	196
6	8'-8"	3'-0"	2.76	169
7	4'-0"	2'-1"	1.15	94
8	8'-8"	4'-6"	4.09	268
9A	4'-0"	4'-9"	2.53	220
9B	4'-0"	5'-0"	2.62	225
9C	4'-0"	4'-3"	2.35	168
10	8'-8"	4'-3"	3.95	224
11	4'-0"	4'-1"	2.17	167
12	4'-0"	4'-1"	2.17	167
13	4'-0"	3'-10"	2.04	166

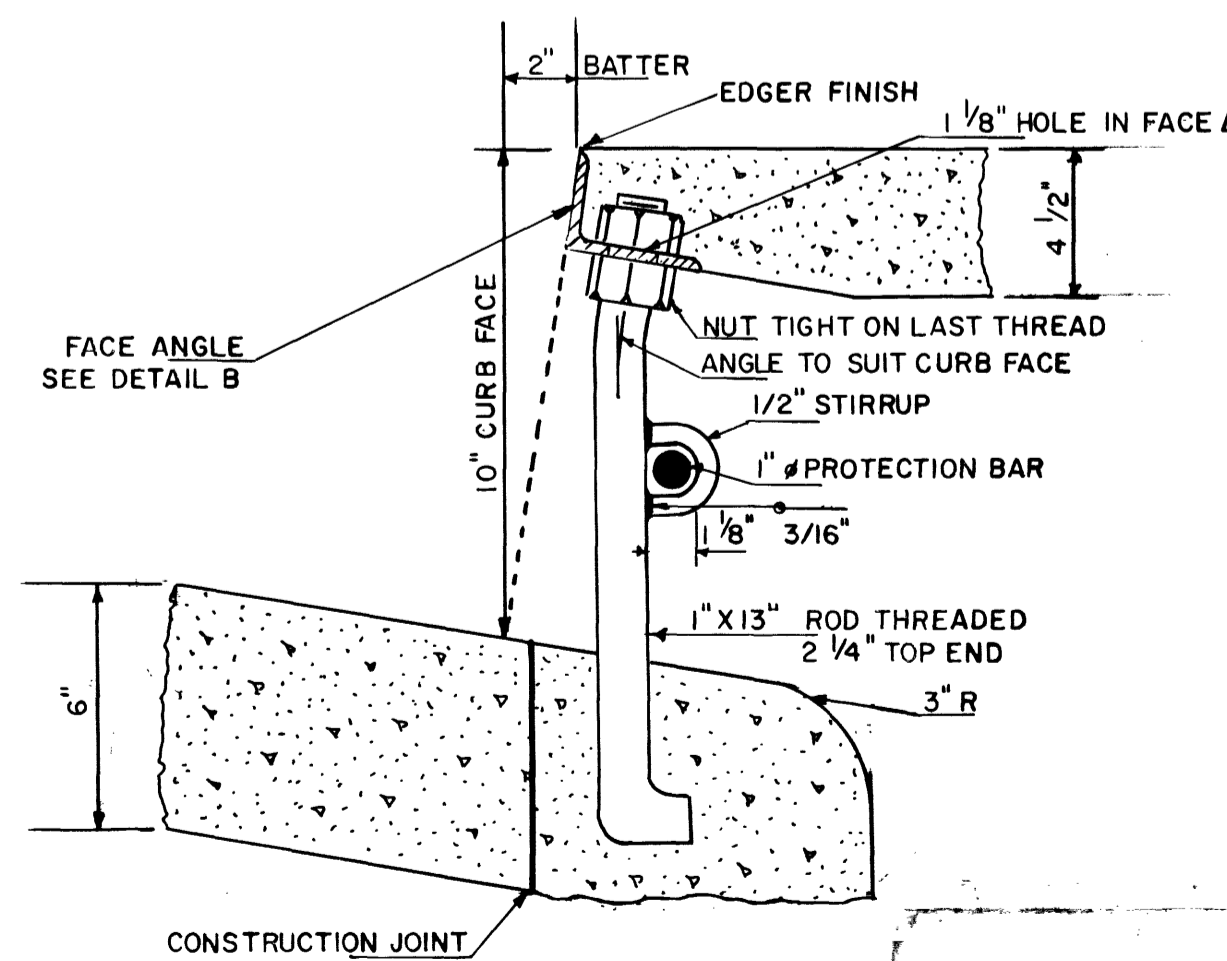
SIDEWALK DRAIN
MARYLAND PARKWAY STA. 53+14



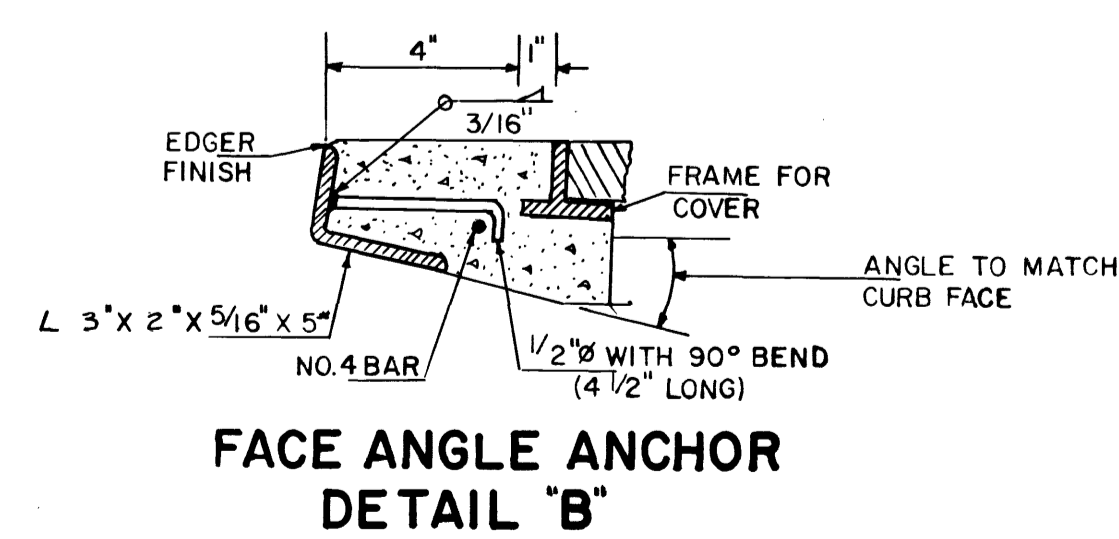
- NOTES:
1. CONCRETE SHALL BE CLASS 5.5 B 3000
 2. COVER SHALL BE 1/4" STEEL PLATE WITH SKID RESISTANT PATTERN.
 3. PLACE 4 - 3/4" DIA. X 3" TAPPING SLEEVES CENTERED IN WALLS AND LOCATED 5" FROM BACK OF SIDEWALK AND BACK OF CURB.
 4. ANCHOR COVER PLATE WITH 3/8" FLAT HEAD MACHINE SCREWS COUNTERSUNK IN COVER.
 5. OUTER 1/8 INCH OF 1/4" STEEL PLATE SHALL BE TURNED DOWN 90° TO PROTECT TRAFFIC FROM EXPOSED EDGES.



PLAN VIEW
DROP INLET



CURB SUPPORT
DETAIL A



FACE ANGLE ANCHOR
DETAIL B

CONTRACT
DRAWING
JUN 4 1971

I CERTIFY THAT THIS PLAN
WAS PREPARED UNDER MY
SUPERVISION.
[Signature]
DATE 2-2-71

CITY OF LAS VEGAS NEVADA
DEPARTMENT OF PUBLIC WORKS
SERVICES DIVISION

STORM DRAIN
DETAILS

W.O. NO. 7820	F.B.K. NO. 64-7X	DATE	DRAWING NO.
SC. (HJAS INDICATED)	SC. (V)	18 FEB. 71	107V-789A
DES. E.D. LOUVIERE			FILE NO.
DR. ABVANYO			
APPROVED BY DIRECTOR OF PUBLIC WORKS			

6-4-71

SHEET 24 OF 31