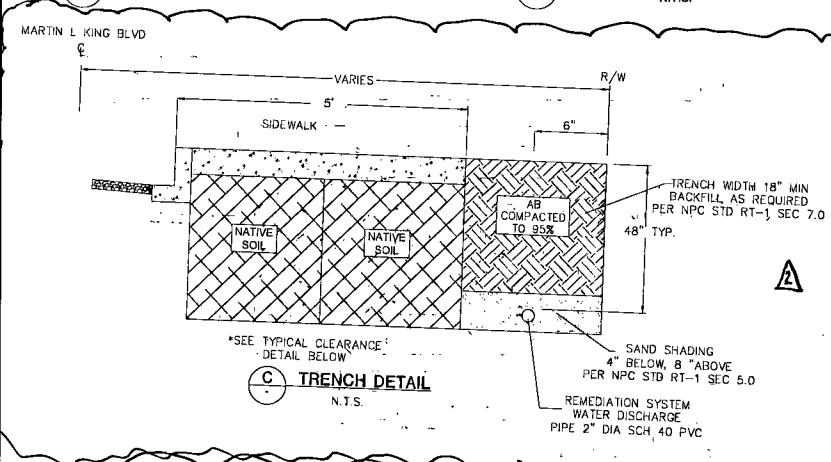
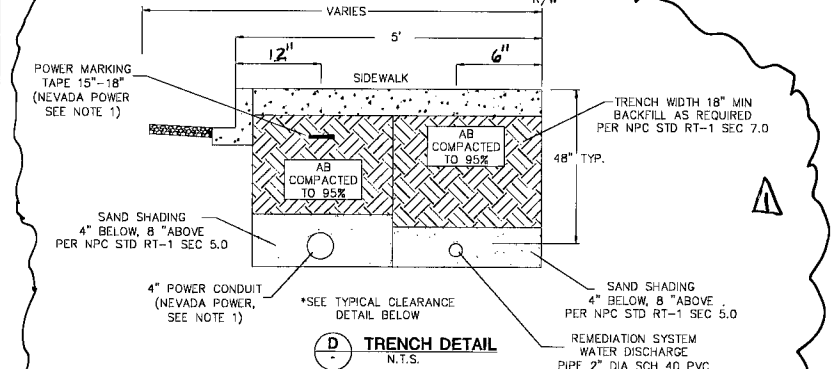


A DROP INLET CONNECTION PROFILE
N.T.S.

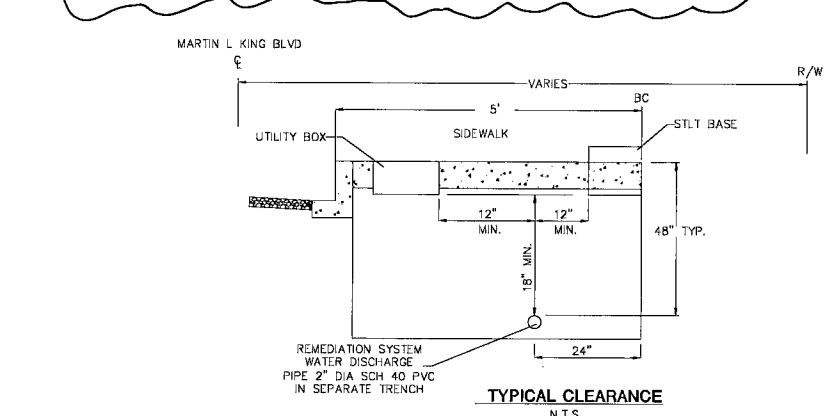
B DROP INLET CONNECTION PLAN
N.T.S.



C TRENCH DETAIL
N.T.S.



D TRENCH DETAIL
N.T.S.



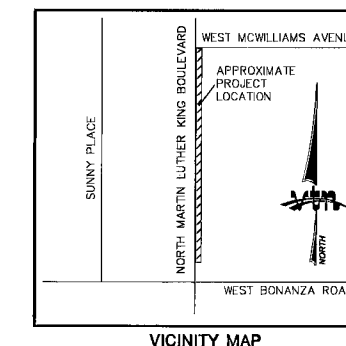
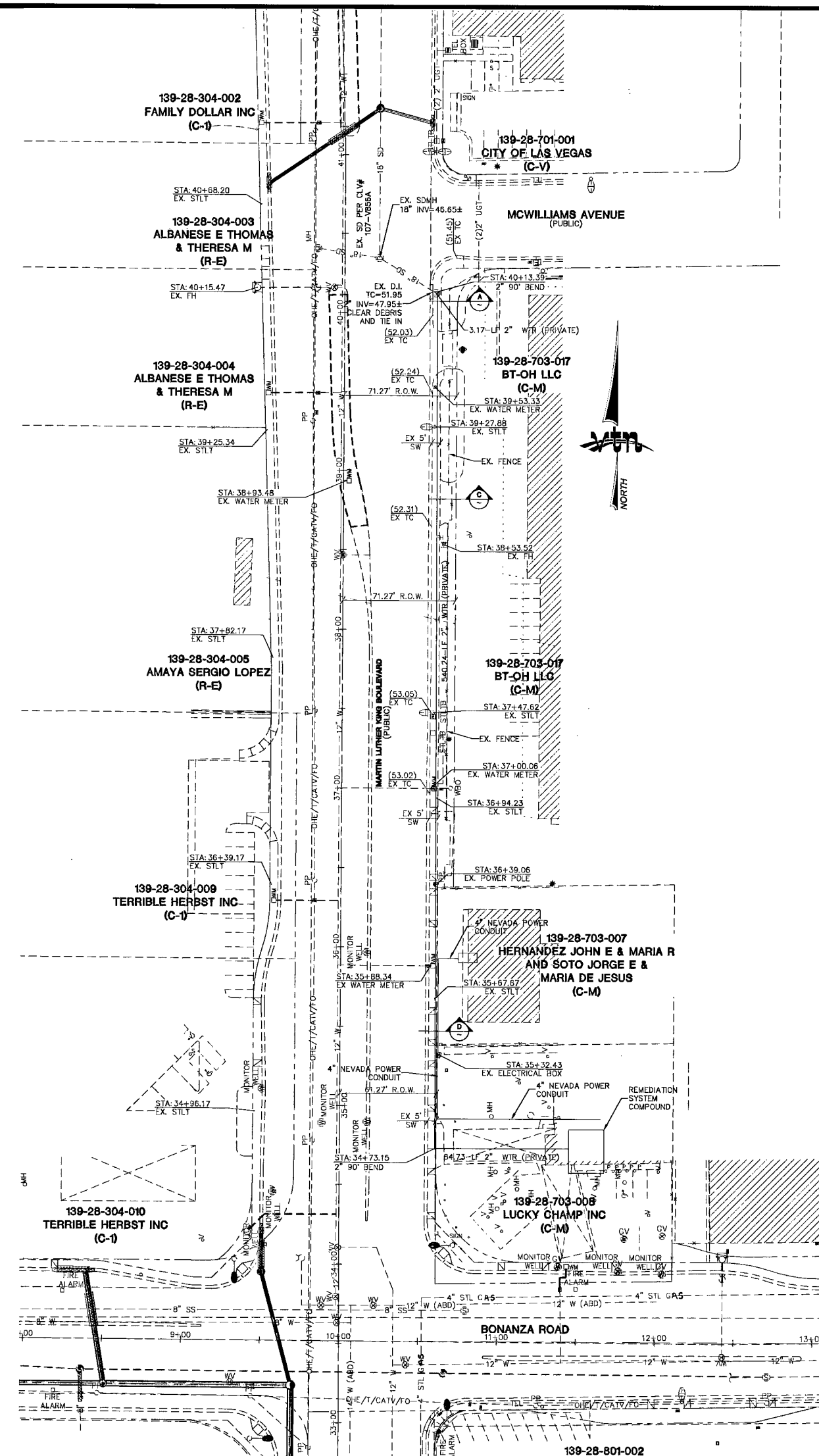
TYPICAL CLEARANCE
N.T.S.

Call before you Dig
811 OR 1-800-227-2600

Call before you Overhead
1-702-455-7511
1-702-229-6611

Call before you Dig
811 OR 1-800-227-2600

Call before you Overhead
1-702-455-7511
1-702-229-6611



PROJECT BENCHMARK

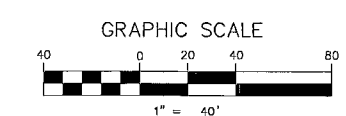
PROJECT DATUM: NORTH AMERICAN VERTICAL DATUM OF 1988 (NAVD88)

CITY OF LAS VEGAS BENCHMARK: 2LV01:21N4
NAVD88 ELEVATION: 627.464 METERS (2058.00 FEET)

RIVET AND PLATE IN TOP OF CURB AT SE CORNER OF CAREY AND MARTIN LUTHER KING.

BASIS OF BEARINGS

THE BASIS OF BEARINGS FOR THIS PROJECT IS SOUTH 89°55'13" WEST BEING THE SOUTH LINE OF THE SOUTHEAST QUARTER (SE 1/4) OF THE NORTHWEST QUARTER (NW 1/4) OF SECTION 21, TOWNSHIP 20 SOUTH, RANGE 61 EAST, M.D.M., CITY OF LAS VEGAS, CLARK COUNTY, NEVADA, AS SHOWN ON A PARCEL MAP ON FILE IN THE CLARK COUNTY, NEVADA RECORDER'S OFFICE IN FILE 102 AT PAGE 26.



FOR ALL NOTES SEE GENERAL NOTE SHEET C3.

DISCLAIMER NOTE

UTILITY LOCATIONS SHOWN HEREON ARE APPROXIMATE ONLY. IT SHALL BE THE CONTRACTOR'S RESPONSIBILITY TO DETERMINE THE EXACT HORIZONTAL AND VERTICAL LOCATION OF ALL EXISTING UNDERGROUND AND OVERHEAD UTILITIES PRIOR TO COMMENCING CONSTRUCTION. NO REPRESENTATION IS MADE THAT ALL EXISTING UTILITIES ARE SHOWN HEREON. THE ENGINEER ASSUMES NO RESPONSIBILITY FOR UTILITIES NOT SHOWN OR UTILITIES NOT SHOWN IN THEIR PROPER LOCATION.

NOTE:

CONTACT CITY OF LAS VEGAS CONSTRUCTION MANAGEMENT AT 229-2433 OR 376-1936 TO COORDINATE THIS WORK WITH AREA CAPITAL IMPROVEMENTS PRIOR TO STARTING CONSTRUCTION.

ATC ASSOCIATES INC.
2727 SOUTH RAINBOW BOULEVARD
LAS VEGAS, NEVADA 89146-9148
PH: (702) 973-7550 FAX: (702) 362-2397
WWW.VIANN.COM

REMEDATION SYSTEM WATER DISCHARGE PLAN

REMEDATION SYSTEM WATER DISCHARGE PLAN

PROFESSIONAL ENGINEER STATE OF NEVADA
DAVID J. EDWARDS
NO. 17860

SCALE: 1" = 40'

SHEET
WTR1
4 OF 4 SHEETS
DRAWING NO.
H# 35334 107V5349