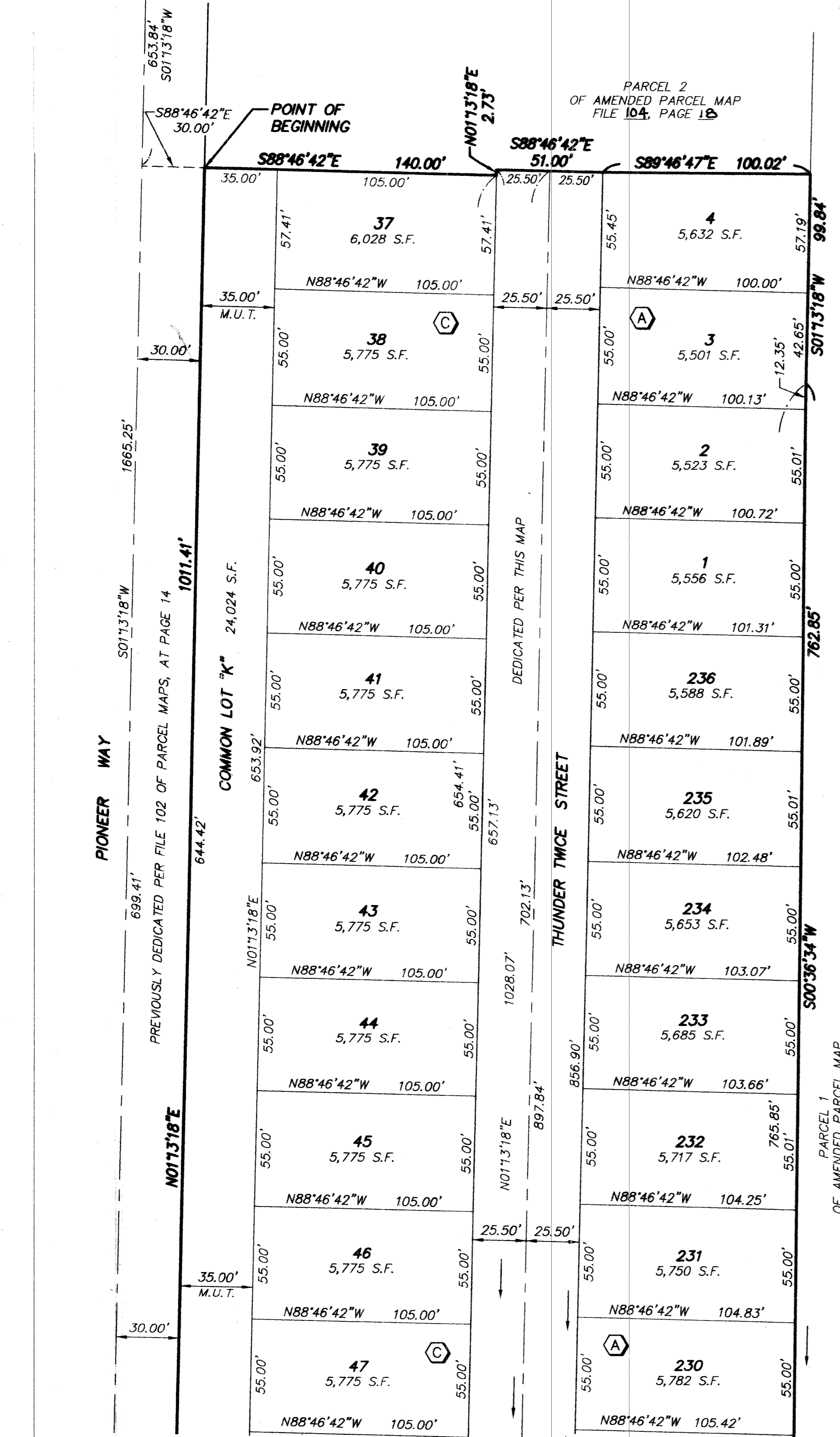


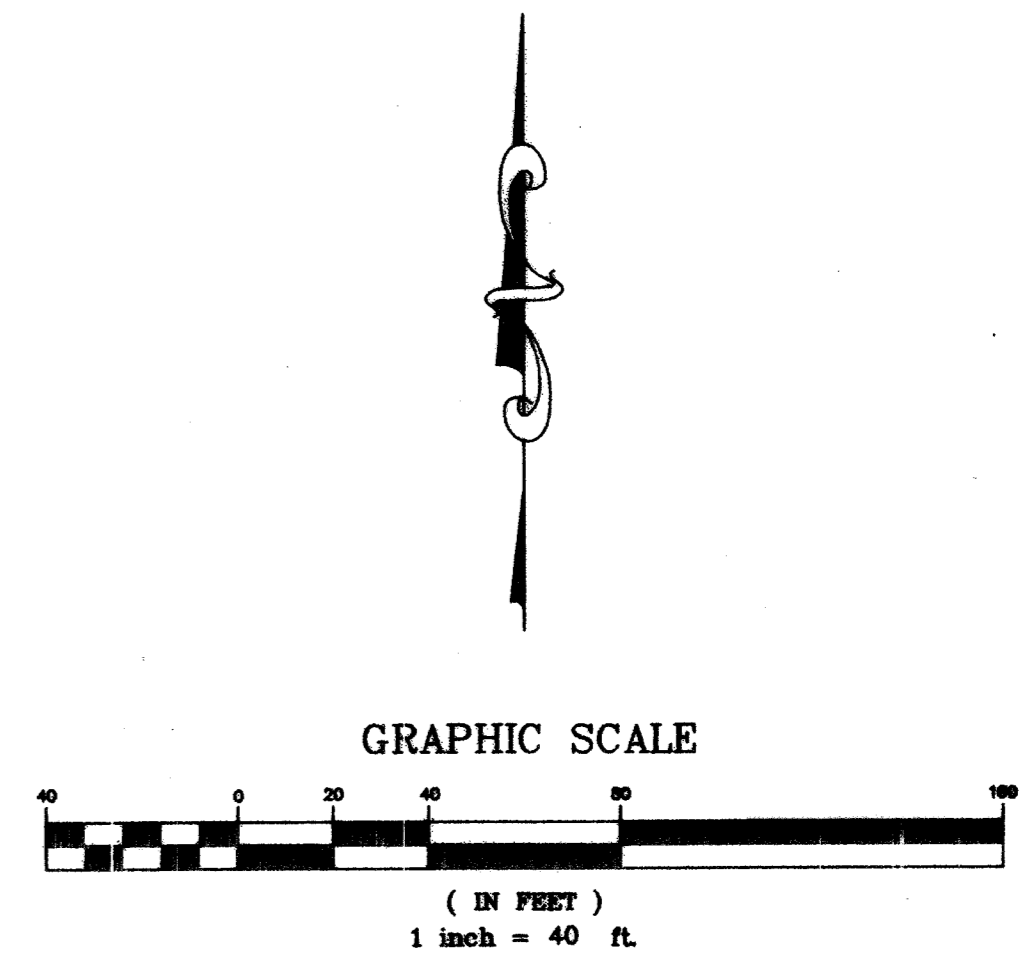
# FINAL MAP OF MAYFIELD UNIT 4A

(A COMMON INTEREST COMMUNITY)  
A PORTION OF PARCEL 2 OF AMENDED PARCEL MAP: FILE 104, PAGE 18, LOCATED WITHIN  
THE SOUTHWEST QUARTER (SW 1/4) OF SECTION 3, TOWNSHIP 20 SOUTH, RANGE 60 EAST, M.D.M.,  
CITY OF LAS VEGAS, CLARK COUNTY, NEVADA

CW 1/16  
4" BRASS CAP  
PLS 7008



FOR CONTINUATION - SEE SHEET 4 of 4



### LEGEND

- BOUNDARY LINE
- - - RIGHT-OF-WAY LINE
- - - STREET CENTERLINE
- - - LOT LINE
- - - EASEMENT LINE
- - - ABUTTING PARCEL LINE
- ▲ FOUND MONUMENT AS NOTED
- SET 5/8" REBAR AND ALUMINUM CAP  
PLS 14195 W/REFERENCE MONUMENTS  
IN TOP OF CURB
- Ⓟ BLOCK LETTER
- 234 LOT NUMBER  
(RESIDENTIAL LOTS = 52)  
(COMMON LOTS = 6)
- S.F. SQUARE FEET
- C1 CURVE NUMBER
- L1 LINE NUMBER
- (R) RADIAL LINE
- DOC. No. DOCUMENT NUMBER
- M.U.T. PUBLIC MULTI-USE TRANSPORTATION  
TRAIL EASEMENT TO BE PRIVATELY  
MAINTAINED BY THE LANDSCAPE  
MAINTENANCE ASSOCIATION
- REFERENCE MONUMENTS
- ⌒ SIGHT VISIBILITY RESTRICTION ZONES  
(SEE NOTE NUMBER 2)
- (PROD) PRODUCED LINE

LINE	BEARING	LENGTH
L1	N43°46'42"W	12.00'
L2	S46°13'18"W	12.00'
L3	S43°46'42"E	14.14'
L4	N46°13'18"E	14.14'
L5(R)	N00°12'46"E	10.00'
L6(6)	N00°12'46"E	15.22'

CURVE	DELTA	RADIUS	LENGTH	TANGENT
C1	90°00'00"	25.00'	39.27'	25.00'
C2	90°00'00"	25.00'	39.27'	25.00'
C3	90°00'00"	15.00'	23.56'	15.00'
C4	90°00'00"	15.00'	23.56'	15.00'
C5	57°46'09"	15.00'	15.12'	8.28'
C6	32°13'51"	15.00'	8.44'	4.33'
C7	57°46'09"	15.00'	15.12'	8.28'
C8	32°13'51"	15.00'	8.44'	4.33'
C9	90°37'03"	15.00'	23.72'	15.16'
C10	89°22'57"	15.00'	23.40'	14.84'
C11	32°50'55"	15.00'	8.60'	4.42'
C12	57°46'09"	15.00'	15.12'	8.28'
C13	31°36'48"	15.00'	8.28'	4.25'
C14	57°46'09"	15.00'	15.12'	8.28'
C15	90°00'00"	25.00'	39.27'	25.00'
C16	25°50'31"	30.00'	13.53'	6.88'
C17	141°41'02"	60.00'	148.37'	172.70'
C18	25°50'31"	30.00'	13.53'	6.88'
C19	43°56'44"	25.00'	19.17'	10.09'
C20	46°03'16"	25.00'	20.10'	10.63'
C21	25°27'03"	60.00'	26.65'	13.55'
C22	64°42'43"	60.00'	67.77'	38.01'
C23	51°31'16"	60.00'	53.95'	28.95'
C24	5°54'14"	30.00'	3.09'	1.55'
C25	19°56'17"	30.00'	10.44'	5.27'

### NOTES

- 1) ALL REAR LOT CORNERS SHALL BE SET WITH A NAIL AND BRASS TAG "PLS 12469" ON BLOCK WALLS AND ALL FRONT OR SIDE CORNERS ADJOINING PUBLIC RIGHT-OF-WAY, SHALL BE MARKED BY THE SAW CUTTING OF THE BACK OF CURBS ON THE PROLONGATION OF THE PROPERTY LINES.
- 2) SIGHT VISIBILITY RESTRICTION ZONES: NO LANDSCAPING OR SIGHT RESTRICTING IMPROVEMENTS (SUCH AS WALLS/FENCES) TALLER THAN 24 INCHES ALLOWED WITHIN THE SHADED AREAS. THESE AREAS SHALL BE PRIVATELY MAINTAINED.