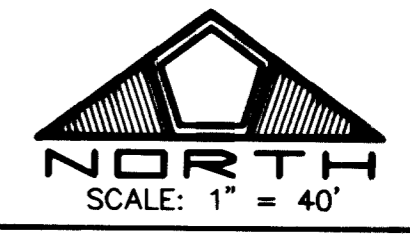
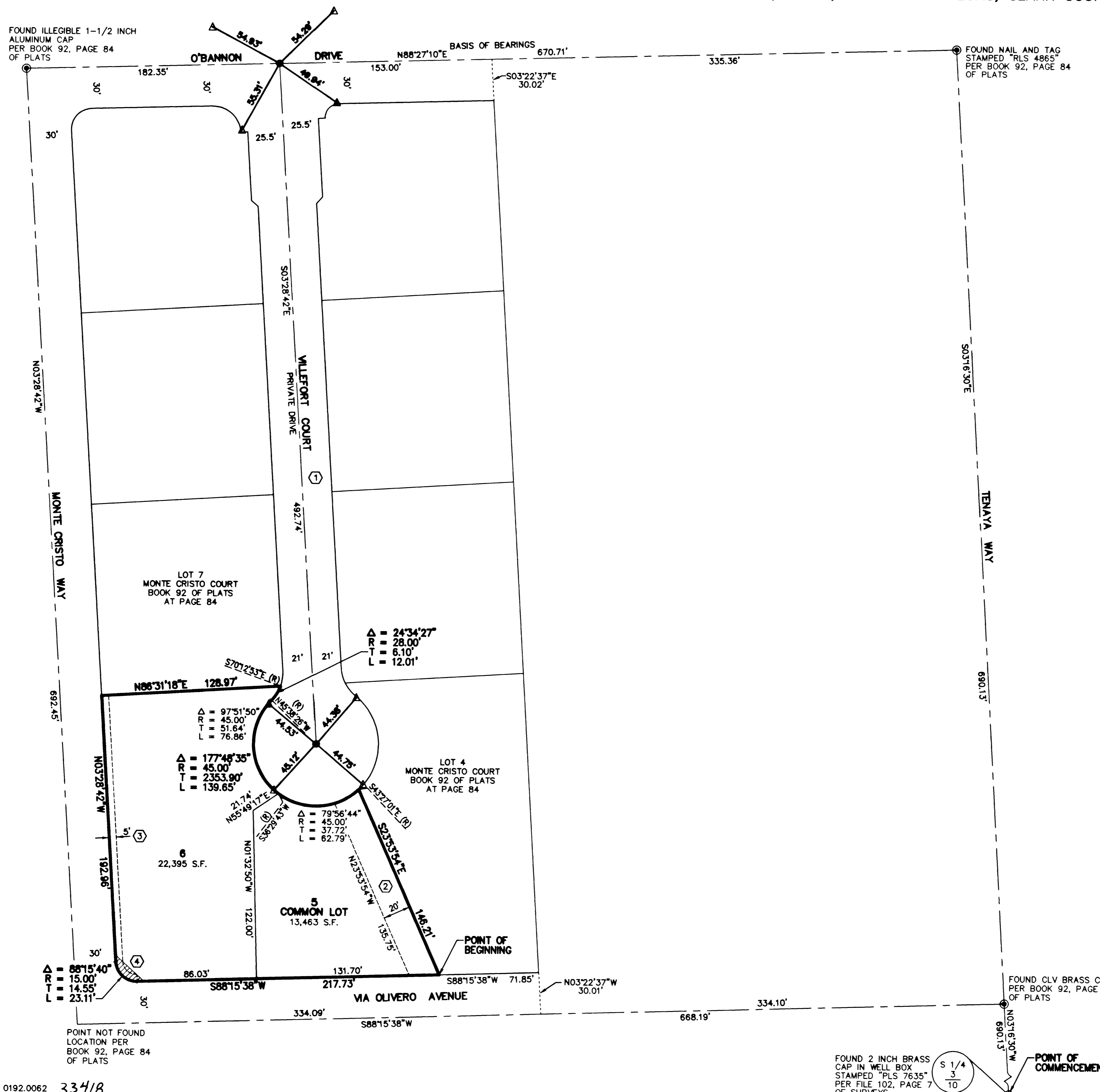


MONUMENT TIE MAP
AMENDED PLAT OF
MONTE CRISTO COURT

BEING COMMON LOT 5 AND LOT 6 OF BOOK 92 OF PLATS AT PAGE 84
 SITUATE IN THE SOUTHEAST QUARTER (SE 1/4) OF THE SOUTHWEST QUARTER (SW 1/4)
 OF SECTION 3, TOWNSHIP 21 SOUTH, RANGE 60 EAST, M.D.M., CITY OF LAS VEGAS, CLARK COUNTY, NEVADA

FOUND ILLEGIBLE 1-1/2 INCH
 ALUMINUM CAP
 PER BOOK 92, PAGE 84
 OF PLATS



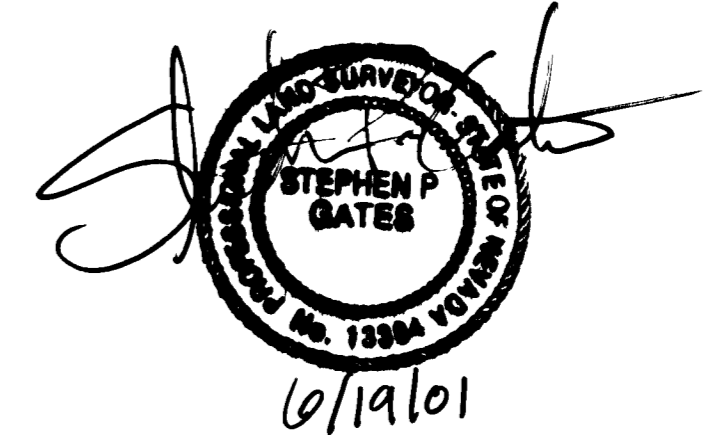
- LEGEND**
- FOUND MONUMENT AS DESCRIBED
 - SET 5/8" REBAR AND ALUMINUM CAP STAMPED "S. P. GATES PLS 13384" WITH REFERENCE MONUMENTS ON TOP OF CURB
 - △ SET TYPE IV-A REFERENCE MONUMENTS STAMPED "RM S. P. GATES PLS 13384"
 - SUBDIVISION BOUNDARY LINE
 - RIGHT-OF-WAY LINE
 - - - STREET CENTERLINE
 - LOT LINE
 - - - EASEMENT LINE
 - ⌒ SIGHT VISIBILITY RESTRICTION EASEMENT
- 5** LOT NUMBER
 TOTAL LOTS IN SUBDIVISION = 1
 COMMON LOTS = 1
- S.F.** SQUARE FEET
- (R)** RADIAL LINE
- ① PRIVATE DRAINAGE, PUBLIC UTILITY EASEMENT, CITY OF LAS VEGAS SEWER EASEMENT AND PUBLIC DRAINAGE EASEMENT PER BOOK 92 OF PLATS AT PAGE 84
- ② PUBLIC SEWER EASEMENT, PUBLIC DRAINAGE AND UTILITY EASEMENT PER BOOK 92 OF PLATS AT PAGE 84
- ③ 5 FOOT LANDSCAPE EASEMENT PER BOOK 92 OF PLATS AT PAGE 84
- ④ SIGHT VISIBILITY RESTRICTION EASEMENT PER BOOK 92 OF PLATS AT PAGE 84

NOTES

1. REAR PROPERTY CORNERS WILL BE SET WITH A REBAR AND ALUMINUM CAP STAMPED "S P GATES PLS 13384" UNLESS A BLOCK WALL IS BUILT, THEN A NAIL AND TAG WILL BE SET IN THE BLOCK WALL TO DENOTE THE SIDE PROPERTY LINE. FRONT PROPERTY CORNERS WILL BE WITNESSED BY A SAWCUT IN THE TOP OF CURB ON THE SIDE PROPERTY LINES PROLONGATED.
2. ALL EASEMENTS AS SHOWN OR NOTED, ARE PRIVATELY MAINTAINED.
3. 30 FOOT RIGHT-OF-WAY DEDICATION FOR VIA OLIVERO AND MONTE CRISTO WAY WAS DEDICATED PER BOOK 92 OF PLATS AT PAGE 84.

SURVEYOR'S CERTIFICATE

I, STEPHEN P. GATES, A PROFESSIONAL LAND SURVEYOR LICENSED IN THE STATE OF NEVADA, DO HEREBY CERTIFY THAT THE MONUMENTS HAVE BEEN SET AND THE TIE DISTANCES ESTABLISHED AS SHOWN HEREON. THIS SURVEY WAS COMPLETED ON MAY 15, 2001.

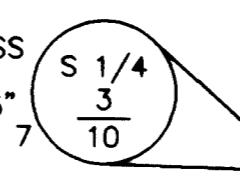


STEPHEN P. GATES
 PROFESSIONAL LAND SURVEYOR
 NEVADA CERTIFICATE No. 13384

30 JANUARY 2001

JOB# 0192.0062 33418

FOUND 2 INCH BRASS CAP IN WELL BOX STAMPED "PLS 7635" PER FILE 102, PAGE 7 OF SURVEYS



POINT OF COMMENCEMENT