

INDEX OF SHEETS

1	NO.	TITLE PAGE
1		TYPICAL SECTIONS
2A		SUMMARIES AND ESTIMATE OF QUANTITIES
3		PLAN AND PROFILE
9		CONSTRUCTION CONTROL PLAN
10-11		SPECIAL DETAILS
12-15		STRUCTURE LIST
16		LOCATION SKETCH - DETOURS AND MATERIALS
17		STANDARD DETAILS
18		STANDARD FIELD LABORATORY
19-21		STANDARD SIGNS (SHEETS 1, 2 AND 3)

So Main St.

Main St. - 5th to PERSON

STATE OF NEVADA

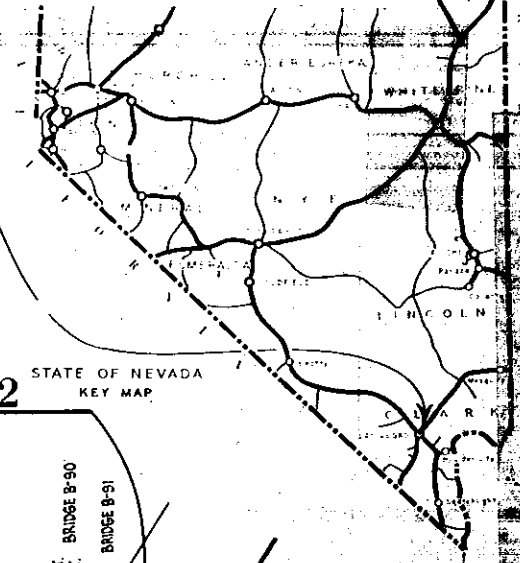
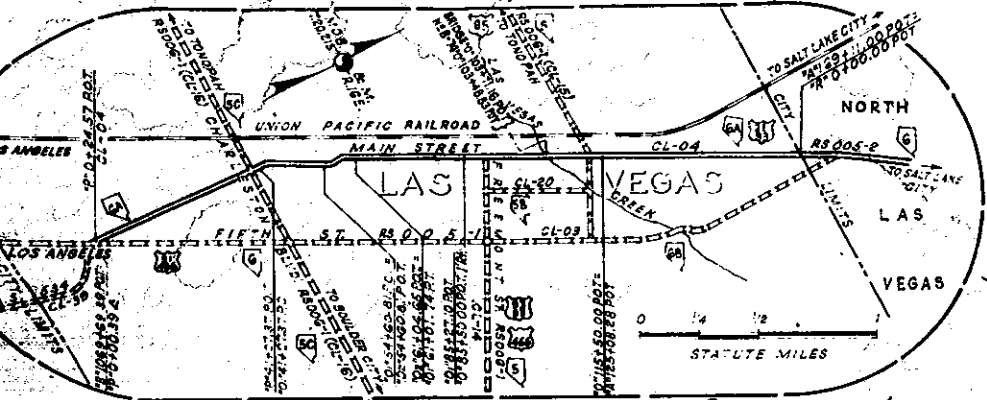
DEPARTMENT OF HIGHWAYS

MAIN ST - Chas. Blvd no. to Bonanza Rd
 MAIN St - College Ave no.
 MAIN ST - Intersec. Bonanza
 Construction Plans.
 HWY BK#M-1

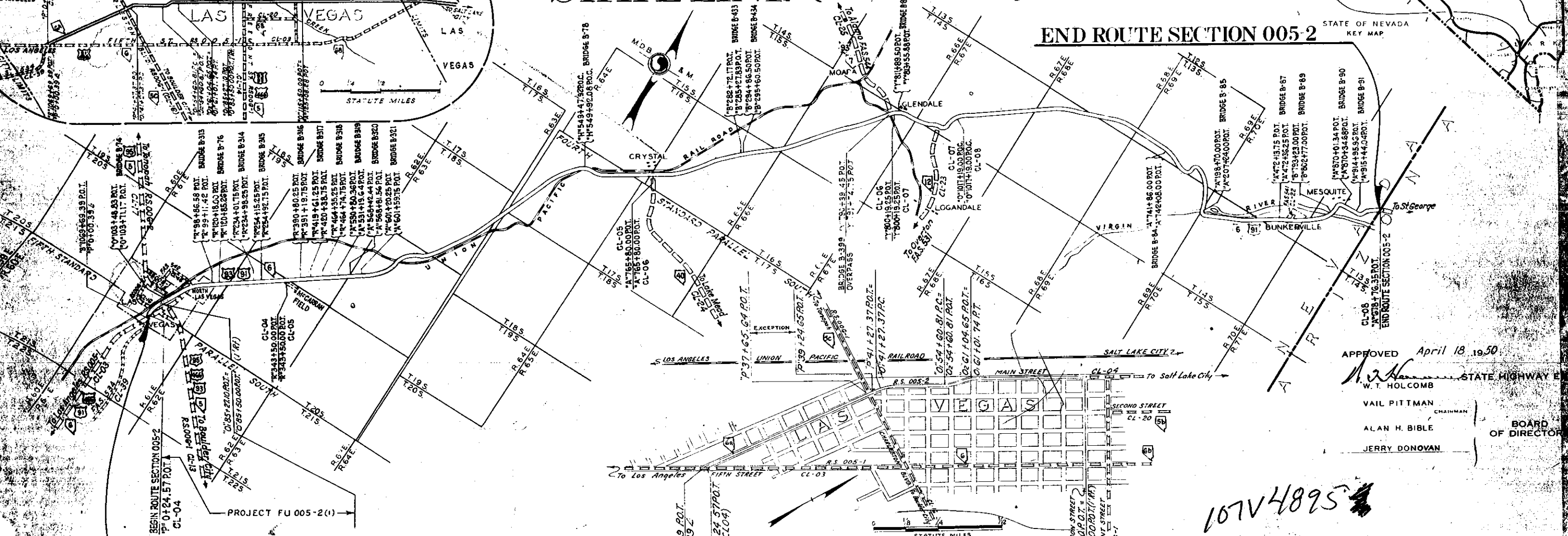
PLAN AND PROFILE OF PROPOSED
 STATE HIGHWAY
 CLARK COUNTY

PROJECT 005-2(1)

LAS VEGAS TO NEV.-ARIZ.
 STATE LINE (NEAR MESQUITE)



END ROUTE SECTION 005-2



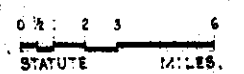
BEGIN ROUTE SECTION 005-2

APPROVED April 18, 1950
 W.T. HOLCOMB
 STATE HIGHWAY ENGINEER
 VAIL PITTMAN CHAIRMAN
 ALAN H. BIBLE
 JERRY DONOVAN
 BOARD OF DIRECTORS

F.U. 005-2(1)
 64' Roadbed including curb and gutter - 48' Class F-2
 Plantmix Surface.
 Length of Project 8346.43 = 1.581 Miles
 Total Length of Route Section as revised 451,324.75 = 85.478 Miles
 Length of Bridges within Route Section (21) 3036.96 = 0.575 Miles
 Length of Overpass within Route Section (1) 135.30 = 0.026 Miles

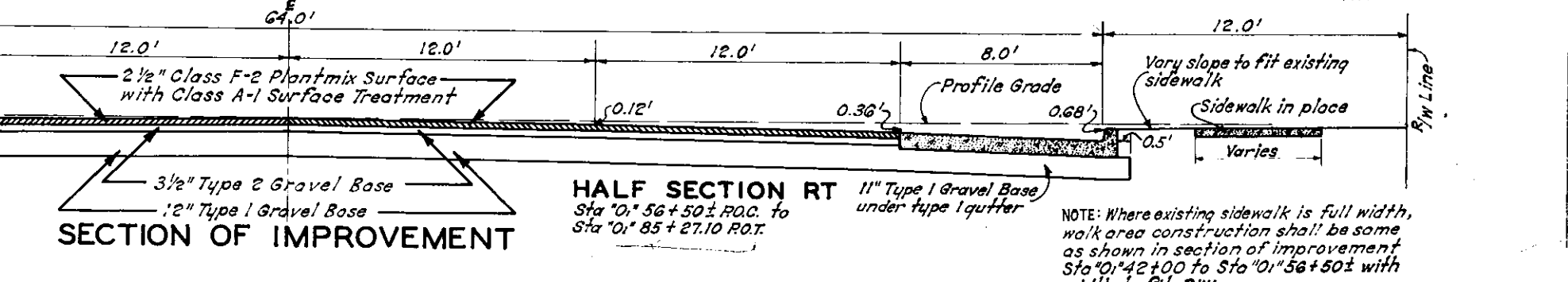
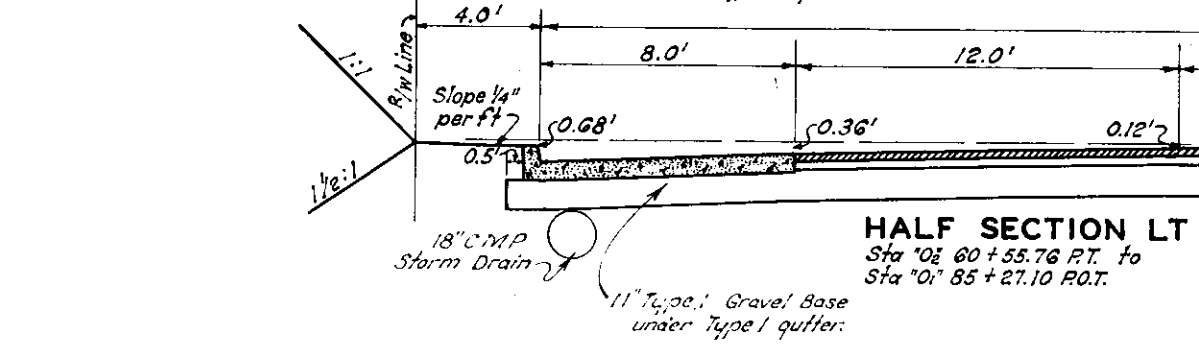
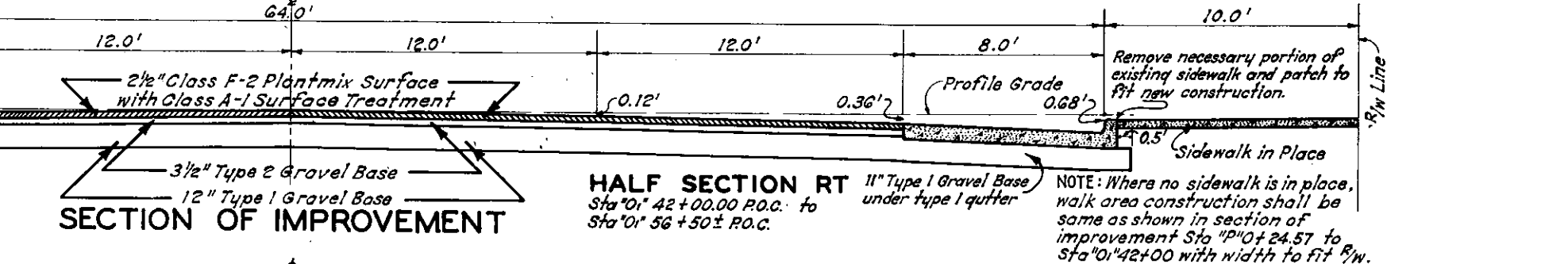
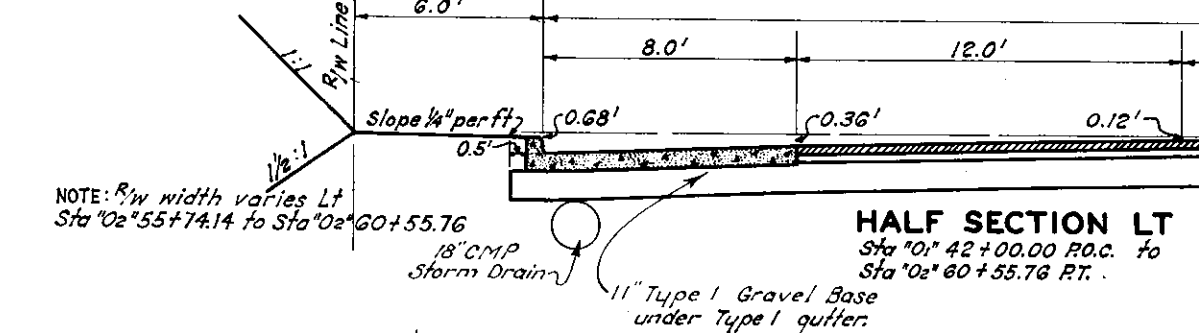
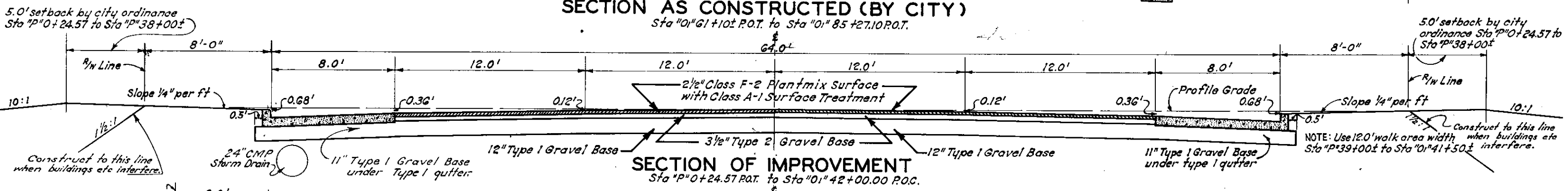
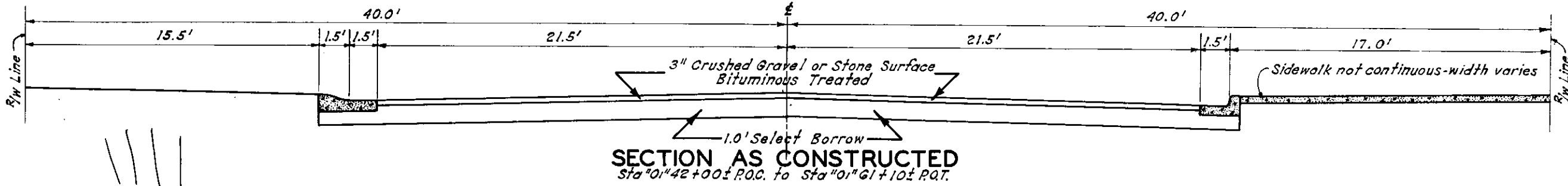
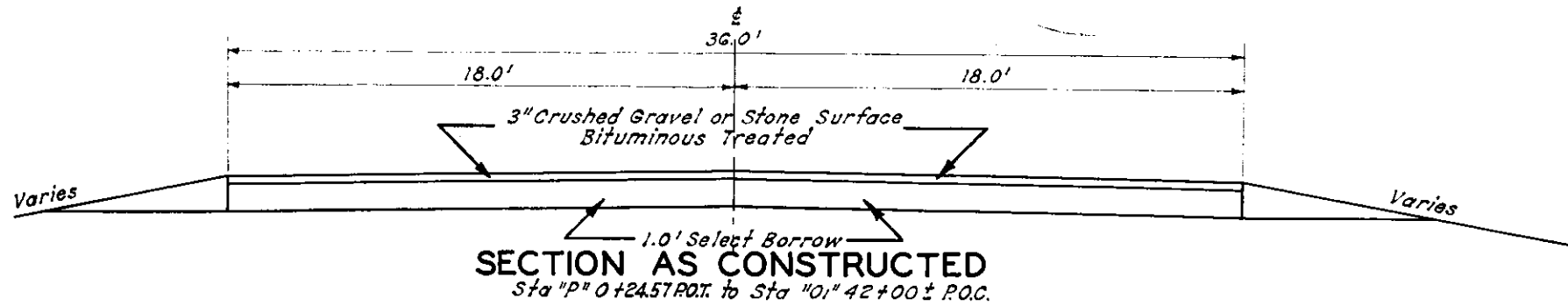
107V4895

DEPARTMENT OF COMMERCE
 BUREAU OF PUBLIC ROADS
 RECOMMENDED FOR APPROVAL
 WILLIAM DONALD SAGLE DISTRICT ENGINEER
 J. DONALD HALL SENIOR ENGINEER
 DISTRICT ENGINEER DATE
 APPROVED
 DIVISION ENGINEER DATE



GENERAL NOTES

1. Alignment and grades are subject to adjustment.
2. Depth of surfacing is compacted thickness.
3. Curves shall not be superelevated.
4. All directional, regulatory and warning signs shall be moved by City of Las Vegas.
5. Pipe culverts shall be installed as follows:
 Storm drain Lt Sta "P" 3+50 to Sta "O" 85+27.10 and cross drains Sta "P" 12+00 to Sta "P" 38+00 shall be installed after completion of subgrade.
 Cross drains, Sta "P" 3+50 to Sta "P" 12+00 and Sta "P" 38+00 to Sta "O" 85+27.10 shall be installed after Type 1 Gravel Base has been placed.



SUMMARY OF SURFACING QUANTITIES

ITEM	TOTAL	UNIT
TYPE 1 GRAVEL BASE		
83 Sta @ 454 tons per sta	37,682	ton
Intersections	1,988	ton
TOTAL	39,670	ton
TYPE 2 GRAVEL BASE		
83 Sta @ 99 tons per sta	8,217	ton
Intersections	838	ton
Driveways	85	ton
TOTAL	9,140	ton

CLASS F-2 PLANTMIX SURFACE

ITEM	TOTAL	UNIT
83 Sta @ 70 tons per sta	5,810	ton
Intersections	598	ton
Driveways and adjustments back of curb	102	ton
TOTAL	6,510	ton

NOTE :
Tonnage shown is aggregate only.
To obtain total tonnage add weight of bituminous material.

SUMMARY OF WATER

ITEM	TOTAL	UNIT
10,206 cu yd Excavation @ 35 gal per cu yd	357,210	gal
3,120 cu yd Backfill @ 20 gal per cu yd	62,400	gal
64,540 sq yd Subgrade @ 5 gal per sq yd	322,700	gal
48,810 tons Base & Surfacing @ 20 gal per ton	976,200	gal
TOTAL	1,718,510	gal
USE	1,719	M gal

THEORETICAL APPLICATION OF LIQUID ASPHALT

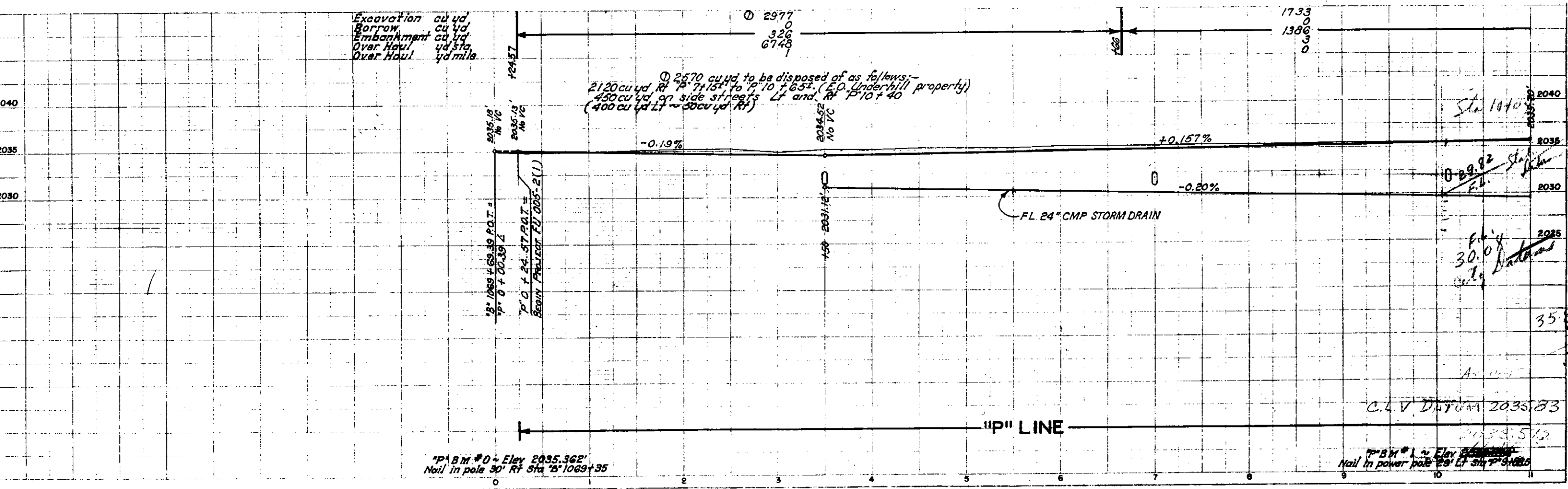
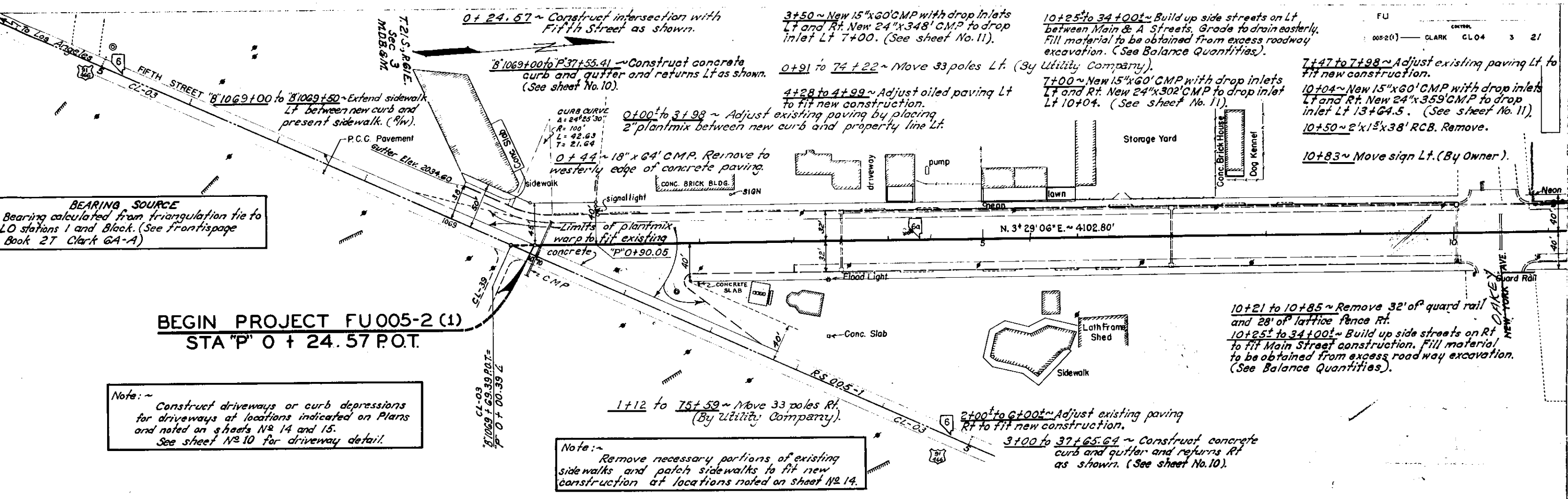
ITEM	
Type MC-1 (Prime Type 2 Base)	0.375 gal per sq yd
Emulsified Asphalt (Seal Plantmix)	0.200 gal per sq yd

ESTIMATE OF QUANTITIES

Quantities shown are approximate only and are subject to increase or decrease TO BE CONTRACTED

ITEM No	ITEM	TOTAL	UNIT
10	Signs	Lump Sum	Lump Sum
11a	Remove Trees (7" to 12")	33	each
11b	Remove Trees (1'-1" to 1'-6")	3	each
11c	Remove Trees (1'-7" to 2'-0")	4	each
11d	Remove Stumps	3	each
12a	Remove Fence	354	lin ft
12b	Remove Concrete Curb and Gutter	8,410	lin ft
12c	Remove Concrete Sidewalk and Driveways	1,435	sq yd
12d	Remove Concrete	25	cu yd
12e	Remove Culvert Pipe	110	lin ft
12f	Remove Headwall	3	each
14	Roadway Excavation	30,570	cu yd
18a	Overhaul, Yd Sta	97,410	yd sta
18b	Overhaul, Yd Mile	15,930	yd mile
20	Structure Excavation	3,910	cu yd
21	Backfill	3,120	cu yd
27a	Water	1,719	M gal
27b	Furnish Water Equipment	Lump Sum	Lump Sum
28a	Power Roller	206	hr
28b	Tamping Roller	545	ft hr
30a	Type 1 Gravel Base	39,670	ton
30b	Type 2 Gravel Base One inch	9,140	ton
33	Liquid Asphalt, Type MC-1 (Prime)	74	ton
35a	Emulsified Asphalt (Seal)	41	ton
35b	Screenings	340	ton
41a	Liquid Asphalt Type SC-6 (Plantmix)	310	ton
41b	Class F-2 Plantmix Surface	6,510	ton
45	Class A Concrete	33	cu yd
46	Reinforcing Steel	20,870	lb
52a	15 inch Corrugated Metal Pipe	1,144	lin ft
52b	18 inch Corrugated Metal Pipe	4,125	lin ft
52c	24 inch Corrugated Metal Pipe	3,508	lin ft
58	Class A Concrete Curb and Gutter	2,891	cu yd
60a	Class A Concrete Patching	25	cu yd
60b	Class A Concrete Driveways	40	cu yd
61	Structural Steel	10,115	lb
107	Miscellaneous Work	Force Acc't	Force Acc't

TO BE PERFORMED BY UTILITY COMPANY
Move Poles



10+83 to 13+77 ~ Remove hedge fence and trees Lt.
 10+17.69 to 10+67.86 ~ Construct street intersection Lt.

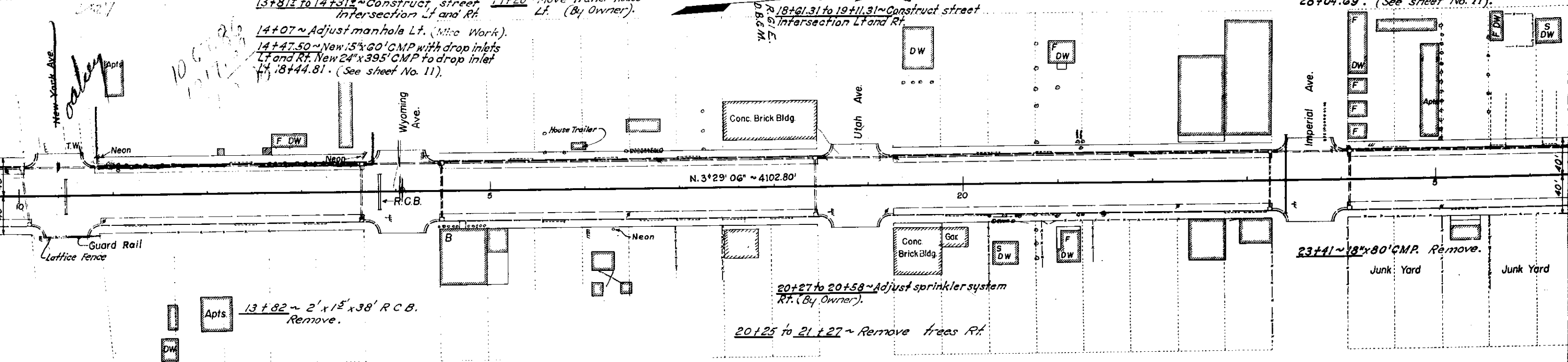
13+65 ~ Move sign Lt. (By Owner).
 13+64.50 ~ New 15"x60' CMP with drop inlets Lt and Rt. New 24"x81' CMP to drop inlet Lt 14+47.5. (See sheet No. 11).
 13+81± to 14+31± ~ Construct street intersection Lt and Rt.

15+95 ~ Move trailer house Lt. (By Owner).
 16+50 to 16+80 ~ Remove shrubbery Lt.
 17+20 ~ Move trailer house Lt. (By Owner).

18+44.81 ~ New 15"x60' CMP with drop inlets Lt and Rt. New 24"x478' CMP to drop inlet Lt 23+24.79. (See sheet No. 11).
 18+61.31 to 19+11.31 ~ Construct street intersection Lt and Rt.

23+24.79 ~ New 15"x60' CMP with drop inlets Lt and Rt. New 24"x81' CMP to drop inlet Lt 24+07.79. (See sheet No. 11).
 23+41.29 to 23+91.29 ~ Construct street intersection Lt and Rt.

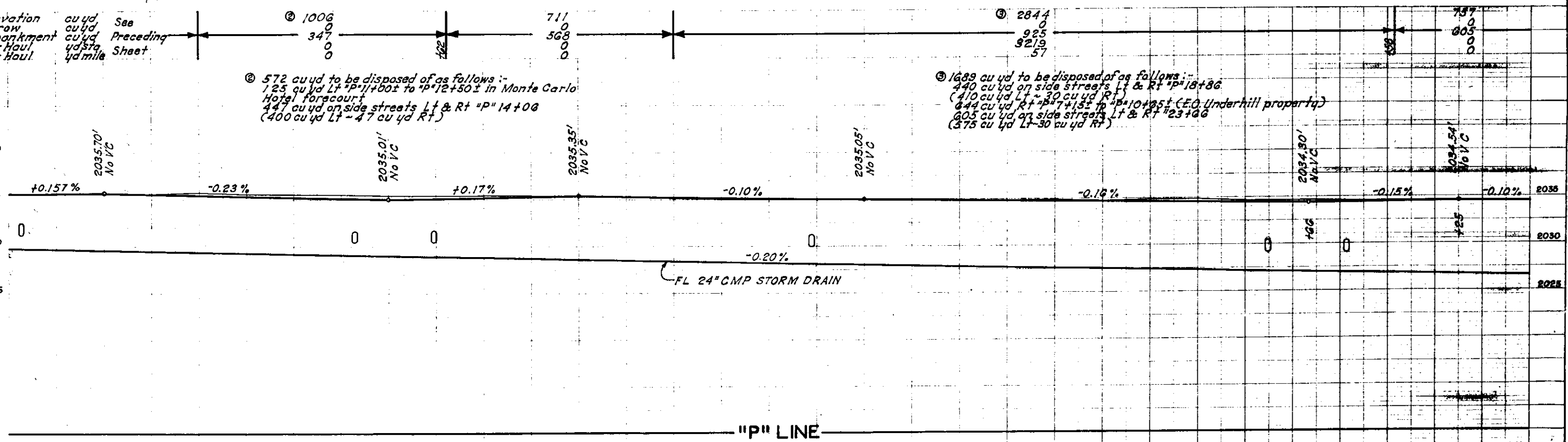
24+07.79 ~ New 15"x60' CMP with drop inlets Lt and Rt. New 24"x395' CMP to drop inlet Lt 28+04.69. (See sheet No. 11).



10+22.69 to 10+73.16 ~ Construct street intersection Rt.

14+46 to 14+96 ~ Move shrubbery Rt (By owner).

Note: For intersection details see sheet No. 10.



② 1006
 347
 0
 0
 0
 711
 568
 0
 0
 0

② 572 cu yd to be disposed of as follows:-
 125 cu yd Lt "P" 11+00± to "P" 12+50± in Monte Carlo Hotel forecourt
 447 cu yd on side streets Lt & Rt "P" 14+00 (400 cu yd Lt - 47 cu yd Rt)

③ 2844
 925
 9219
 57
 157
 0
 605
 0
 0

③ 1689 cu yd to be disposed of as follows:-
 440 cu yd on side streets Lt & Rt "P" 18+86 (410 cu yd Lt - 30 cu yd Rt)
 644 cu yd Rt "P" 7+15± to "P" 10+95± (E.O. Underhill property)
 605 cu yd on side streets Lt & Rt "P" 23+06 (375 cu yd Lt - 30 cu yd Rt)

"P" BM #1 ~ Elev 2036.874'
 Nail in power pole 29' Lt Sta "P" 9+88.50

"P" BM #2 ~ Elev 2037.434'
 Nail in pole 27' Rt Sta "P" 19+20

28+04.69 ~ New 15"x60" CMP with drop inlets Lt and Rt. New 24"x478" CMP to drop inlet Lt 32+84.71. (See sheet No. 11).

32+84.71 ~ New 15"x60" CMP with drop inlets Lt and Rt. New 24"x465" CMP to drop inlet Lt 37+53.91. (See sheet No. 11).

33+01.21 to 33+51.21 ~ Construct street intersection Lt.

37+53.91 ~ Construct drop inlet Lt. Connect to existing manhole Lt. "0"105 + 89.63 (Charleston Blvd Sta) with 24"x126" CMP using 25" CMP elbow 31' Lt 37+73. Break opening in existing manhole wall and gROUT in new 24" CMP. (See Sheets No 10 & 11).

39+24.65 to 85+27.10 ~ Construct concrete curb, gutter and returns Lt as shown. (See Sheet No 10).
40+25 to 42+12 ~ Construct concrete valley gutter 32' Lt. (See sheet No. 10).
40+25 to 42+12 ~ Construct street intersection Lt. (See Sheet No. 9).

28+21.19 to 28+71.19 ~ Construct street intersection Lt.

33+03 ~ 2' x 15' x 38' R.C.B. Remove.

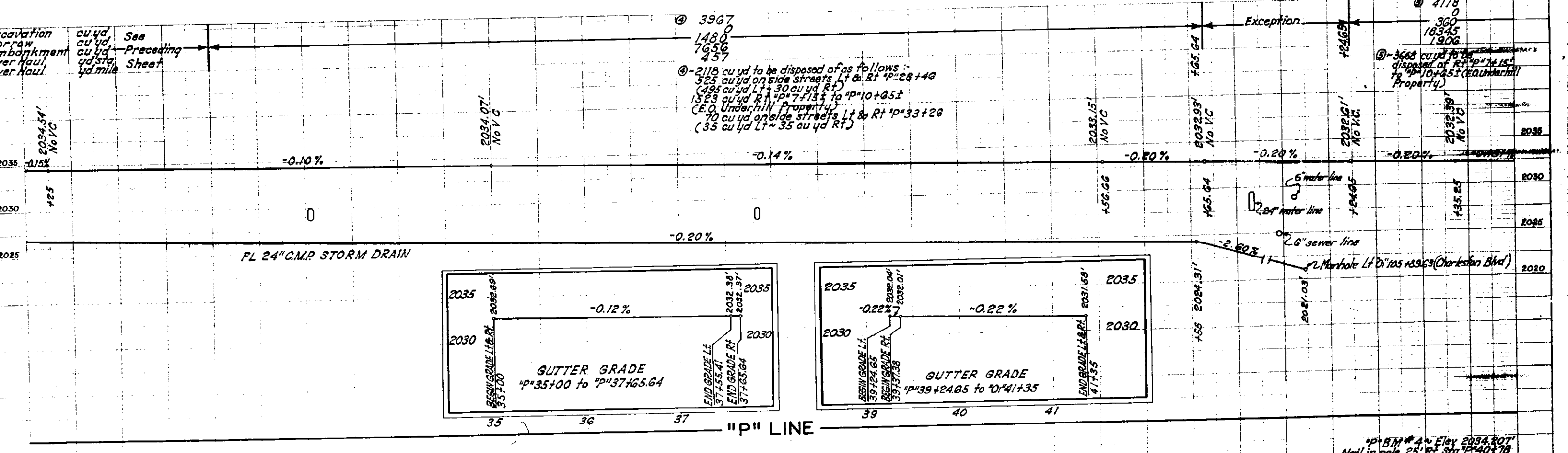
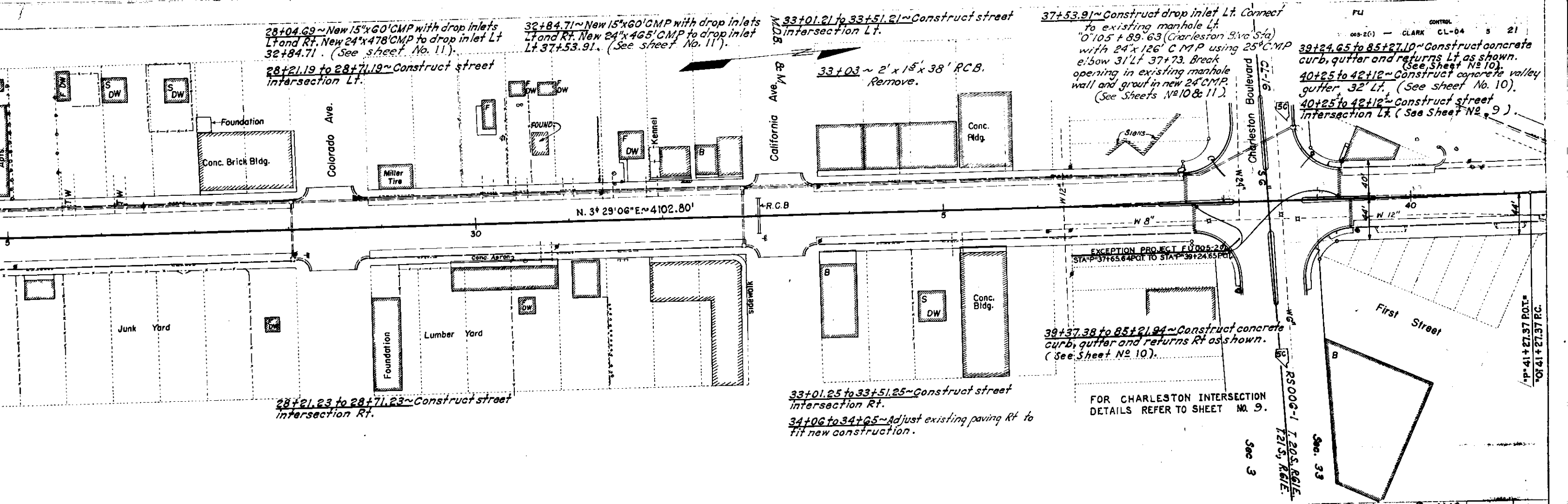
28+21.23 to 28+71.23 ~ Construct street intersection Rt.

33+01.25 to 33+51.25 ~ Construct street intersection Rt.

34+06 to 34+65 ~ Adjust existing paving Rt to fit new construction.

39+37.38 to 85+21.94 ~ Construct concrete curb, gutter and returns Rt as shown. (See Sheet No 10).

FOR CHARLESTON INTERSECTION DETAILS REFER TO SHEET NO. 9.

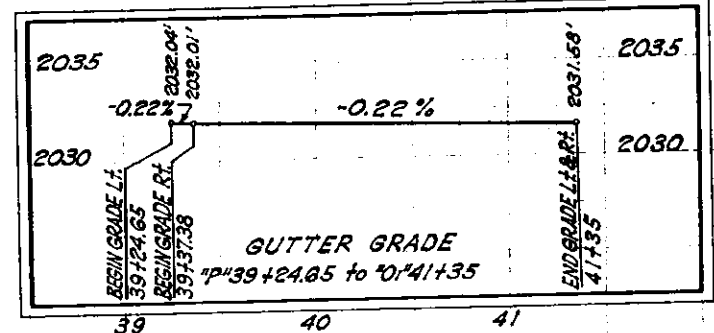
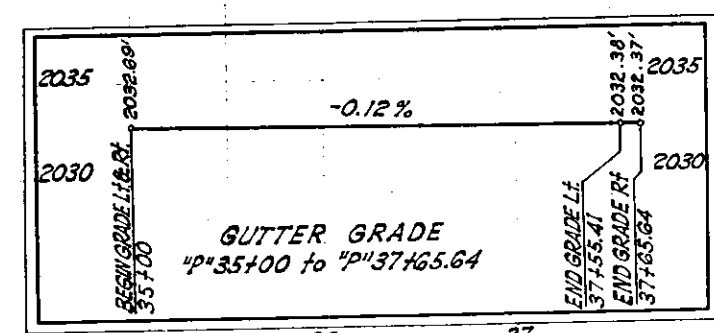


3967
1480
7656
457

2118 cu yd to be disposed of as follows:-
525 cu yd on side streets Lt & Rt "P" 28+46 (495 cu yd Lt + 30 cu yd Rt)
1523 cu yd Rt "P" 7+13 to "P" 10+65 (E.O. Underhill Property)
70 cu yd on side streets Lt & Rt "P" 33+26 (35 cu yd Lt + 35 cu yd Rt)

4118
360
18345
1906

3668 cu yd to be disposed of Rt "P" 10+65 to "P" 10+65 (E.O. Underhill Property)



"P" BM # 3 ~ Eley 2035.512' Nail in pole 25' Rt Sta "P" 30+85

"P" BM # 4 ~ Eley 2034.207' Nail in pole 25' Rt Sta "P" 40+78

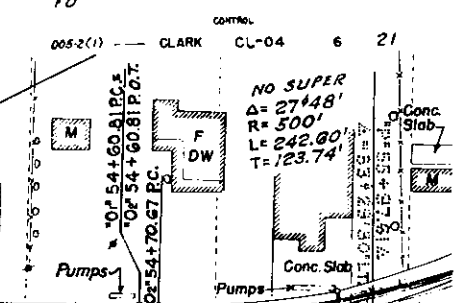
41+56 to 42+12 ~ Patch sidewalk Lt between new curb and present sidewalk.
 40+31 to 40+66 ~ Remove trees Lt.

41+95 to 85+27.10 ~ Remove existing concrete curb, gutter and returns Lt and Rt.
 42+16 ~ Adjust manhole Lt. (Misc Work).
 43+88 ~ Construct drop inlet Lt. New 18" x 24" CMP to drop inlet Lt 46+37.15. (See sheet No. 11).
 44+09 ~ Adjust wood steps Lt. (By Owner).
 45+15 ~ Adjust manhole Lt. (Misc Work).

46+37.15 ~ New 15" x 60" CMP with drop inlets Lt and Rt. New 18" x 477" CMP to drop inlet Lt 51+13.56. (See sheet No. 11).
 47+56 to 48+20 ~ Adjust existing Lt to fit new construction paving.
 49+30 ~ Adjust wood steps Lt. (By Owner).

48+15 ~ Adjust manhole Lt. (Misc Work).
 50+20 ~ Cut 4" pipe Lt to fit new curb. (Misc Work).
 50+60 ~ Adjust water valve box Lt. (Misc Work).
 50+70 ~ Cut 4" pipe Lt to fit new curb. (Misc Work).
 50+95 ~ Cut 4" pipe Lt to fit new curb. (Misc Work).

51+17 ~ Adjust manhole Lt. (Misc Work).
 51+15.56 ~ New 15" x 60" CMP with drop inlets Lt and Rt. New 18" x 438" CMP to cleanout box Lt 55+55. (See sheet No. 11).
 52+60 to 53+00 ~ Remove 66' of fence Lt.
 52+60 ~ Move sign Lt. (By Owner).
 53+97 ~ Adjust manhole Lt. (Misc Work).
 52+55 to 52+95 ~ Move shrubbery Lt. (By Owner).
 53+30 ~ Move wood steps Lt. (By Owner).



41+50 to 42+30 ~ Construct street intersection Rt. (See sheet No. 9).
 42+16 ~ Adjust fire hydrant Rt. (By City).

44+23 ~ Remove tree Rt.
 44+34 ~ Remove tree Rt.

46+53.65 to 47+03.65 ~ Construct street intersection Rt.

51+19 ~ Move fire hydrant Rt. (By City).
 51+98 ~ Move U.S. mail box Rt. (Misc Work).

51+32.06 to 51+82.06 ~ Construct street intersection Rt.

55+95 to 56+50 ~ Construct street intersection Rt. (See Sheet No. 9).
 55+55 ~ New 15" x 60" CMP with cleanout box Lt and drop inlet Rt. New 18" x 87" CMP to drop inlet Lt 56+50. (See Sheets No. 10 & 11).

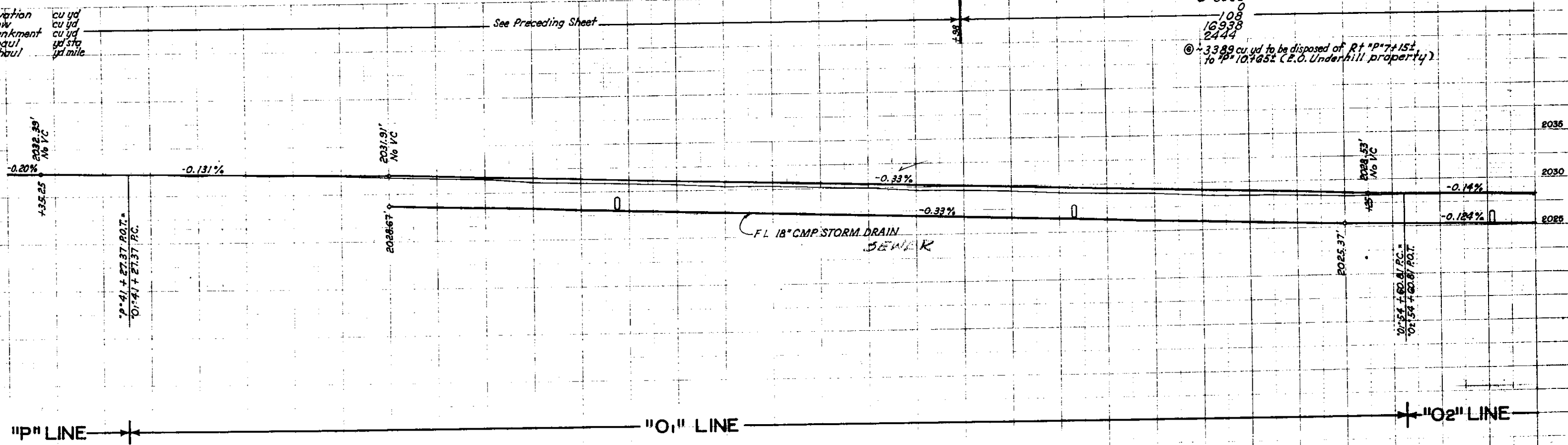
55+40 ~ Remove tree Rt.

Δ=24'25"
 R=400'
 L=170.46'
 T=86.54'
 NO SUPER

SEC. 33
 SEC. 34

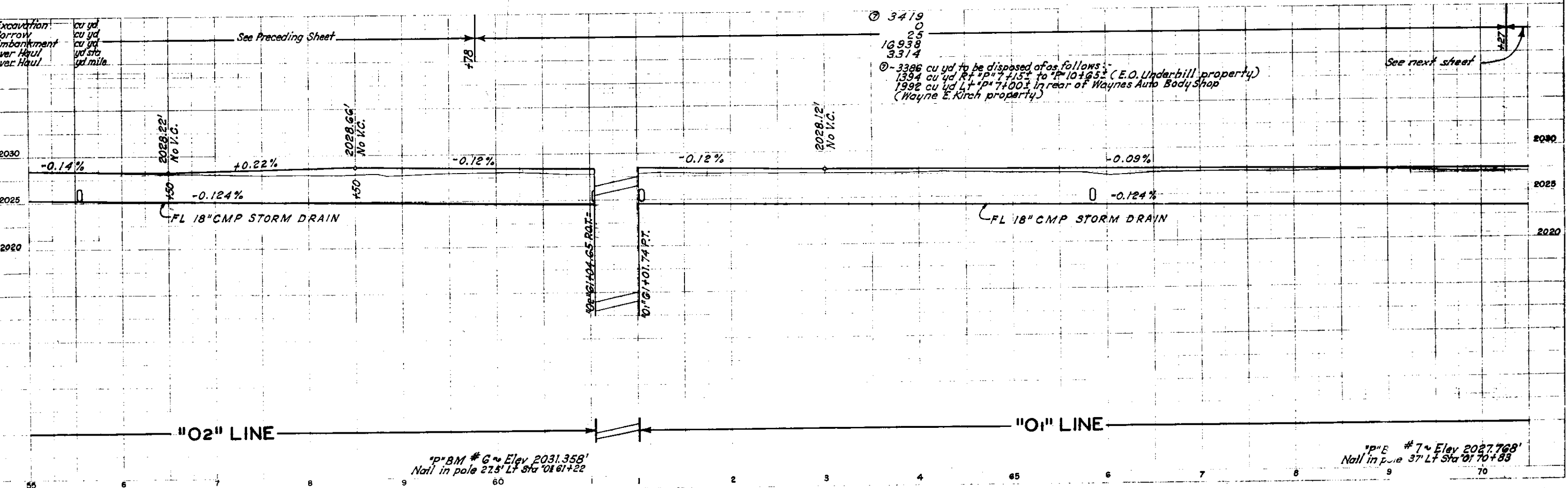
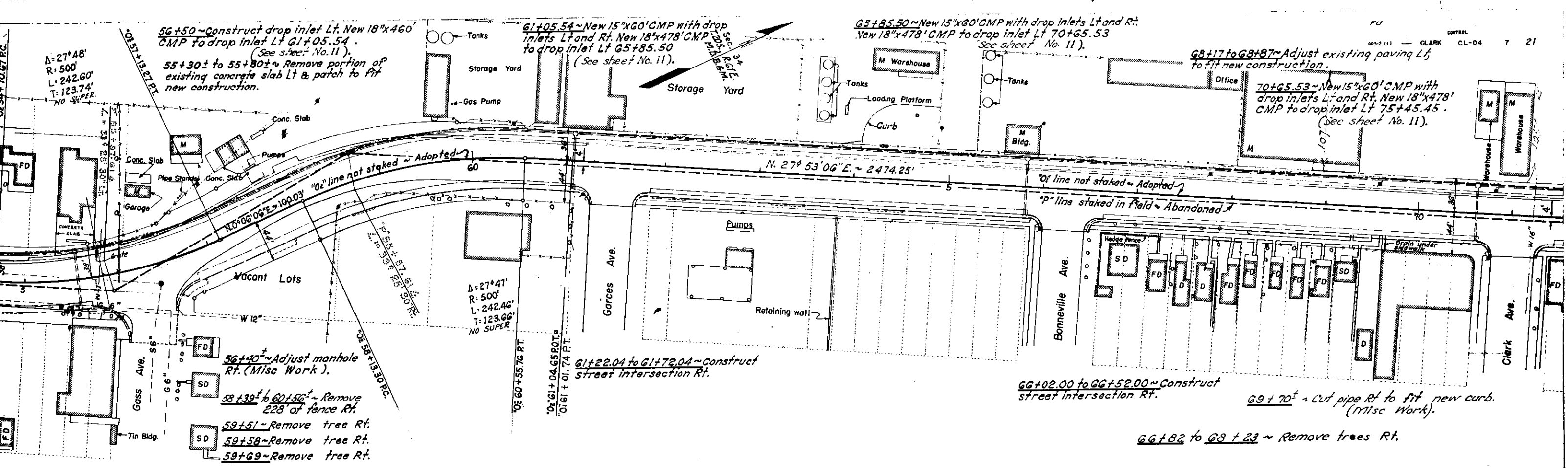
510'
 4653
 4677.65

Excavation
 borrow
 embankment
 overhaul
 overhaul



"P" BM #4 ~ Elev 2034.207'
 Nail in pole 25' Rt Sta "P" 40+78

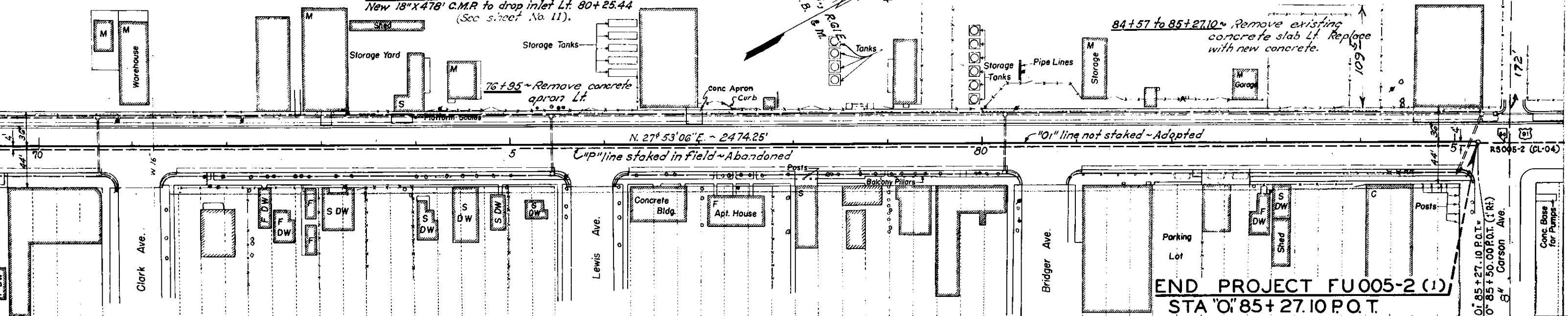
"P" BM #5 ~ Elev 2030.389'
 Nail in pole 28.5' Rt Sta "P" 49+73



73+75 to 73+97 ~ Remove platform scales Lt. (By owner).
 75+45.45 ~ New 15"X60' C.M.P. with drop inlet Lt. and Rt.
 New 18"X478' C.M.P. to drop inlet Lt. 80+25.44
 (See sheet No. 11).

80+25.44 ~ New 15"X60' C.M.P. with drop inlets Lt. and Rt.
 New 18"X504' C.M.P. to cleanout box Lt 0+85+52
 (See sheet No. 11).

84+57 to 85+27.10 ~ Remove existing concrete slab Lt. Replace with new concrete.



70+82.03 to 71+32.03 ~ Construct street intersection Rt.

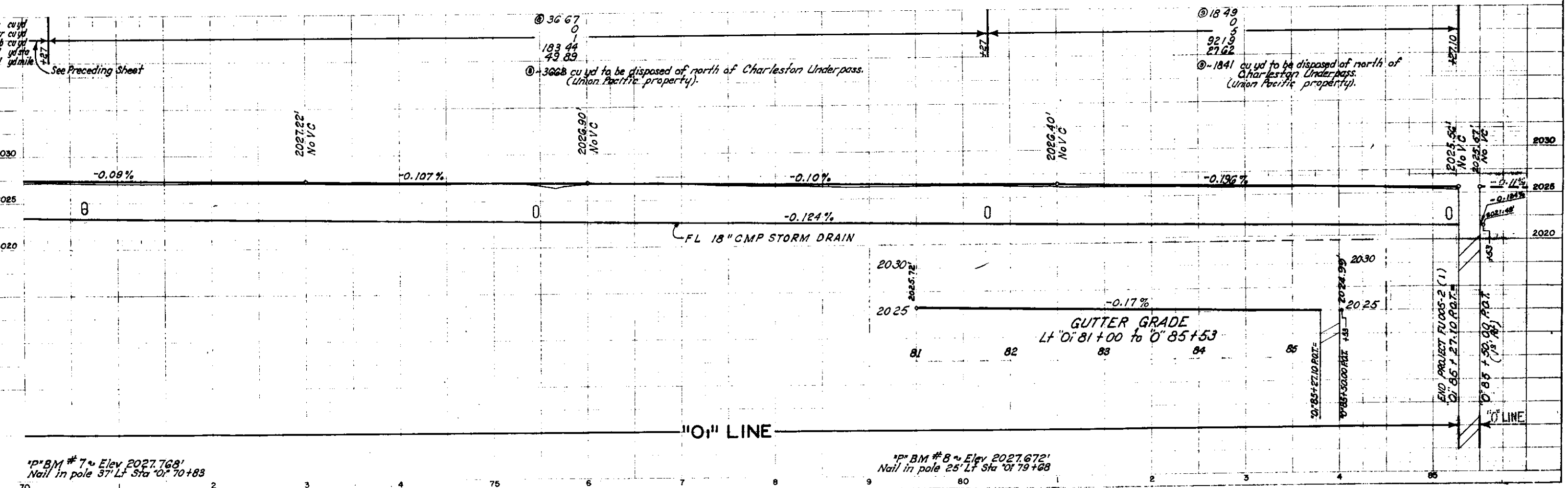
75+61.95 to 76+11.95 ~ Construct street intersection Rt.

80+41.94 to 80+91.94 ~ Construct street intersection Rt.

71+95 to 75+00 ~ Remove trees and stumps Rt.

76+28 to 80+40 ~ Remove trees Rt.

84+36 to 84+55 ~ Remove gas pumps and appurtenances Rt. (By owner).
 85+17.60 ~ New 15" x 64' C.M.P. 22° skew with cleanout box Lt and drop inlet Rt. (See sheets No. 10 & 11).
 85+08 ~ Move street light Rt. (By City).



IP BM #7 ~ Elev 2027.768'
 Nail in pole 37' Lt Sta 0+70+83

IP BM #8 ~ Elev 2027.672'
 Nail in pole 25' Lt Sta 0+79+68

2021.11
 2021.95
 2024.08
 2024.88

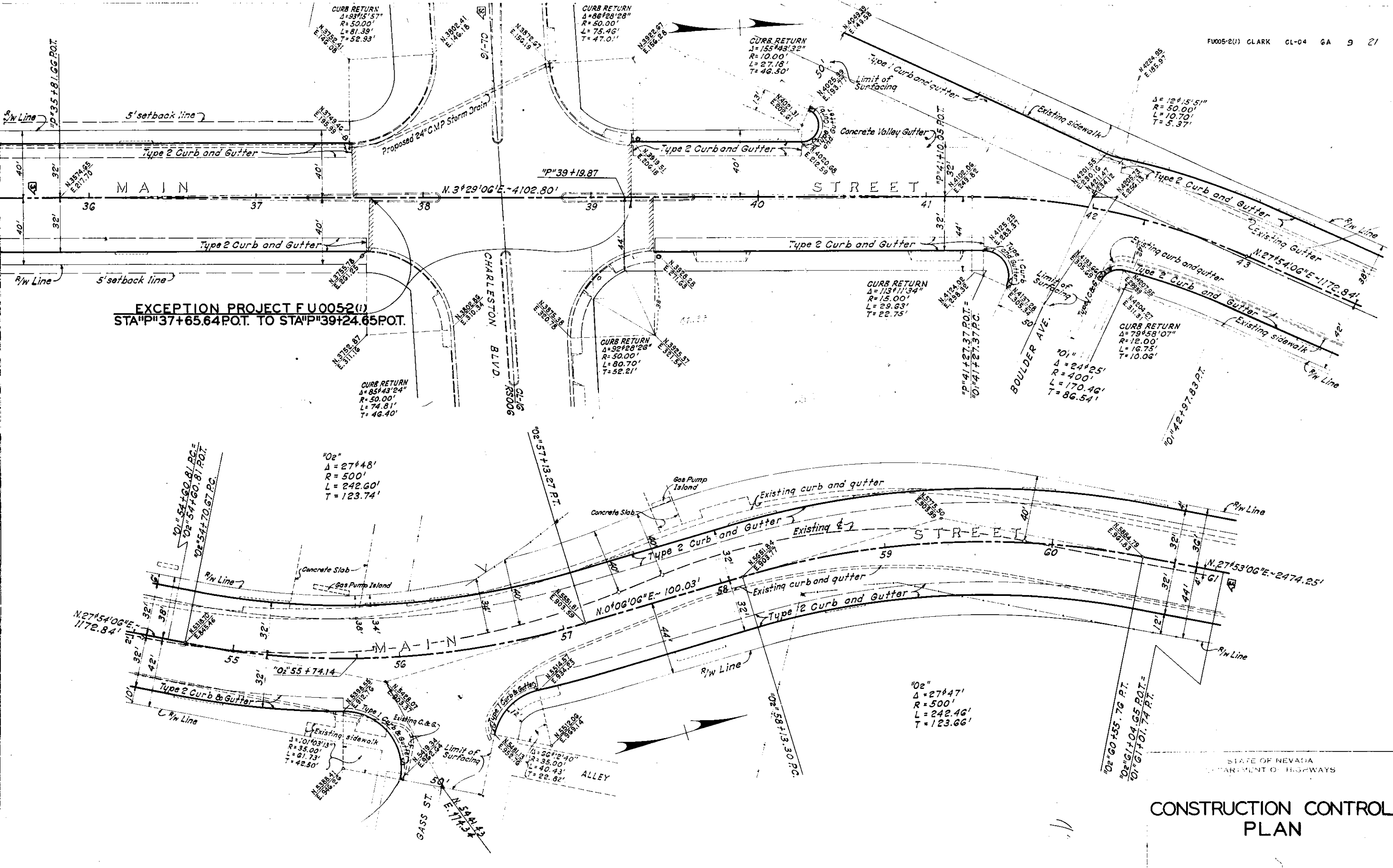
FU
 005-2(1)
 CLARK
 CL-04

END PROJECT FU005-2 (1)
 STA "O" 85+27.10 P.O.T.

0+85+27.10 P.O.T.
 0+85+50.00 P.O.T. (1 Rt.)
 Carson Ave.

Conc. Base for Pumps

R5005-2 (CL-04)



EXCEPTION PROJECT FU0052(U)
STA "P" 37+65.64 P.O.T. TO STA "P" 39+24.65 P.O.T.

STATE OF NEVADA
 DEPARTMENT OF HIGHWAYS
CONSTRUCTION CONTROL PLAN