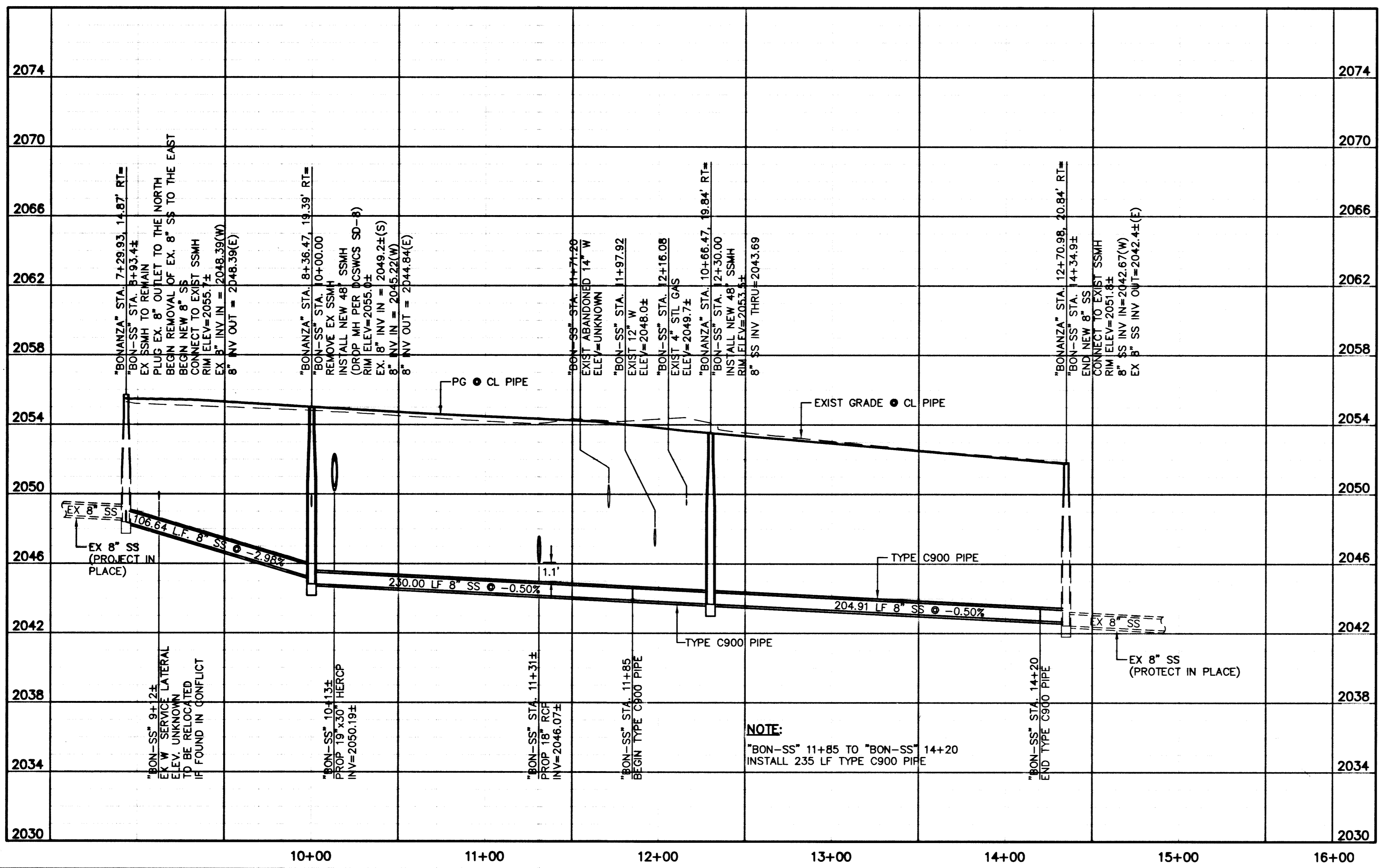


- CONSTRUCTION NOTES:**
- EX 8" SS TO BE ABANDONED PER CCSD SECTION 3.14
  - REMOVE 25± LF EX 8" SS
- NOTES:**
- CONTRACTOR SHALL VERIFY ALL HORIZONTAL & VERTICAL LOCATIONS OF EXISTING UTILITIES PRIOR TO COMMENCEMENT OF CONSTRUCTION
  - CONTRACTOR SHALL REFER TO CCSD STANDARD DRAWINGS FOR CONSTRUCTION DETAILS
  - "BON-SS" DENOTES BONANZA RD SANITARY SEWER STATIONING



Avoid cutting underground utility lines. It's costly.  
 2 working days  
**Call before you Dig**  
 1-800-227-2600  
 Underground Service Alert (U.S.A.)

Avoid overhead power line contact.  
 2 working days  
**Call before you Overhead**  
 1-702-227-2929  
 Nevada Power Environment and Safety Services Department

**APPROVED**

*Robert J. Morgan*  
 LAS VEGAS VALLEY WATER DISTRICT

7/19/07  
 DATE

DEPARTMENT OF PUBLIC WORKS  
 CITY OF LAS VEGAS

CONSULTING ENGINEERS • PLANNERS • LAND SURVEYORS  
 2727 SOUTH RAINBOW BOULEVARD  
 LAS VEGAS, NEVADA 89146-5148 PHONE (702) 873-7550 FAX (702) 362-2597

**vtn nevada**

TITLE: **SANITARY SEWER PLAN & PROFILE**  
 STA. 8+93.4± TO STA. 14+34.9±  
 BONANZA ROAD

PROJECT: **MARTIN L. KING BLVD IMPROVEMENTS**  
 ALTA DR TO CAREY AVE

STATE OF NEVADA  
 CIVIL  
 KEN D. GILBRETH  
 EXP. 08/30/07  
 No. 9177

NO. NO. **6224**  
 DESIGNED BY **LMW**  
 DRAWN BY **LMW**  
 DATE **4/2/07**  
 SCALE HORIZ. 1"=40'  
 VERT. 1"=4'  
 DRAWING SHEET  
**SS1** OF **237** SHEETS

1: 0224.dwg (Design) 6/22/07 - SS.dwg