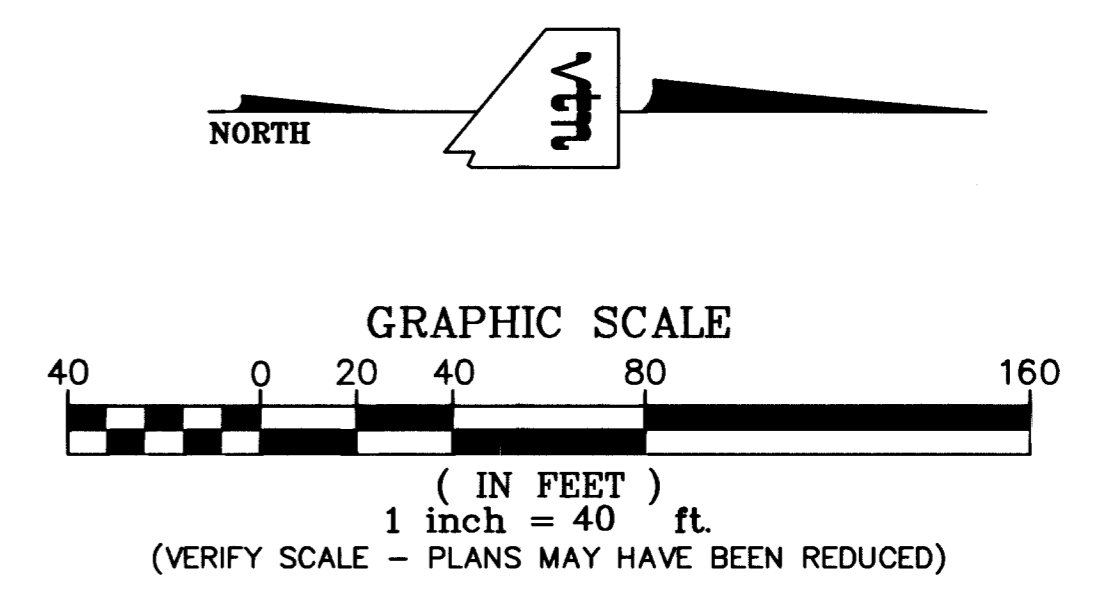


CAUTION - HIGH PRESSURE GAS LINE

CALL SOUTHWEST GAS AT 365-2296 FOR STANDBY WHEN EXCAVATING OVER OR NEAR HIGH PRESSURE GAS LINES

CAUTION - HIGH PRESSURE GAS LINE

CALL SOUTHWEST GAS AT 365-2296 FOR STANDBY WHEN EXCAVATING OVER OR NEAR HIGH PRESSURE GAS LINES



LEGEND

- NEW STORM DRAIN
- CEMENT SLURRY ENCASEMENT (4" MIN.)

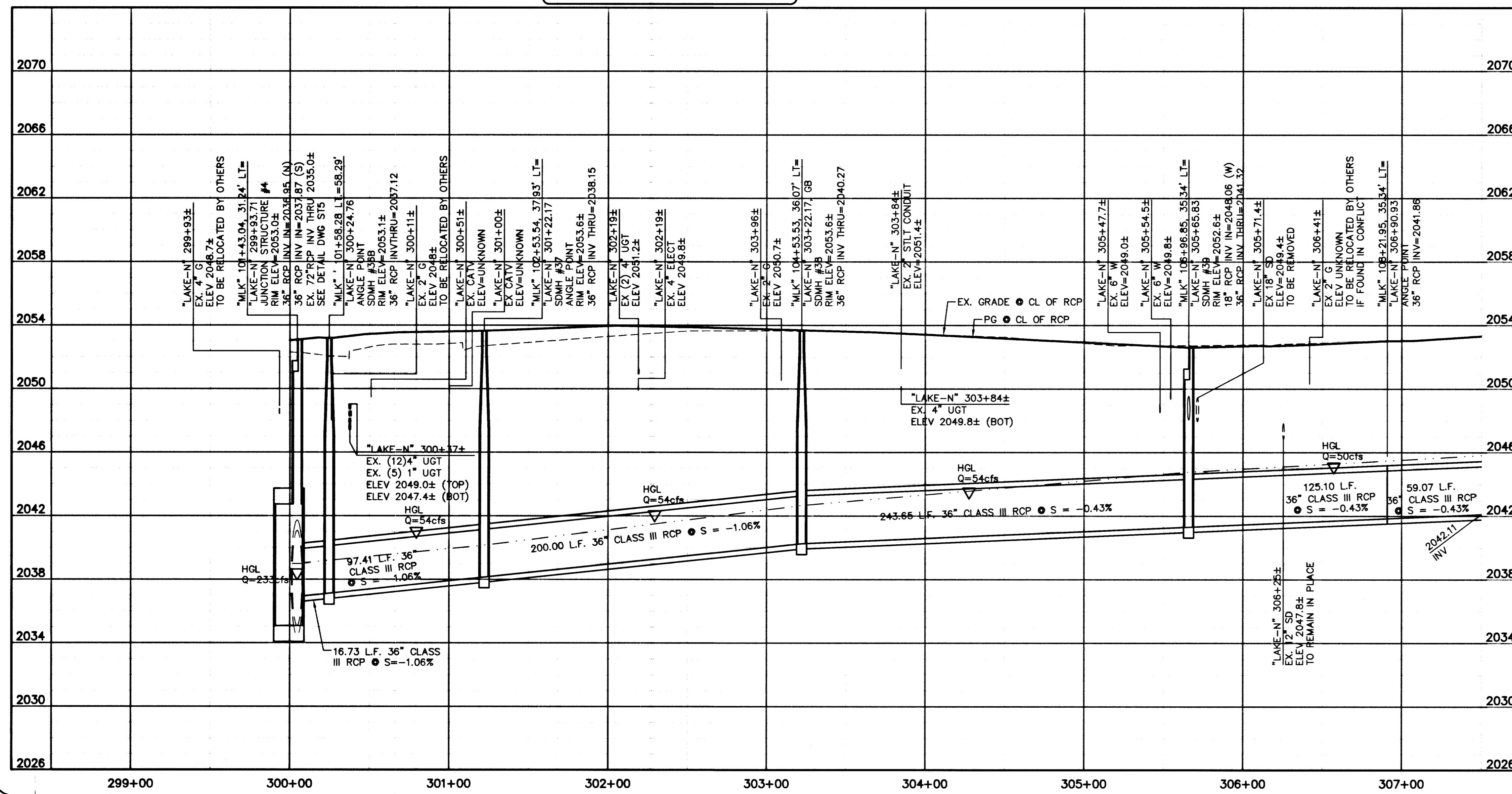
CONSTRUCTION NOTES:

1. PROTECT IN PLACE
2. CONSTRUCT WITH CEMENT SLURRY ENCASEMENT PER UDACS SECTION 2.19
3. CEMENT SLURRY BACKFILL TO SPRING LINE OF EXISTING WATER LINE.
4. REMOVE EXISTING STORM DRAIN PIPE, MANHOLE AND/OR DROP INLET. SEE RP1 THRU RP11 FOR LIMITS

NOTES:

1. SEE DRAWING I2 FOR GENERAL NOTES
2. SEE DRAWING D1 FOR STORM DRAIN MANHOLE AND DROP INLET SCHEDULE
3. CONTRACTOR SHALL VERIFY ALL HORIZONTAL AND VERTICAL LOCATIONS OF EXISTING UTILITIES PRIOR TO COMMENCEMENT OF CONSTRUCTION

SEE DRAWINGS RP1 - RP11 FOR REMOVAL PLANS



Avoid cutting underground utility lines. It's costly.
 2 working days
Call before you Dig
 1-800-227-2600
 Underground Service Alert (U.S.A.)

Avoid overhead power line contact.
 2 working days
Call before you Overhead
 1-702-227-2929
 Nevada Power Environment and Safety Services Department

APPROVED

Robert J. [Signature] 7/19/07
 LAS VEGAS VALLEY WATER DISTRICT DATE

CONSULTING ENGINEERS • PLANNERS • LAND SURVEYORS
 2727 SOUTH RAINBOW BOULEVARD
 LAS VEGAS, NEVADA 89146-5148 PHONE (702) 873-7550 FAX (702) 362-2597

vtm nevada

DEPARTMENT OF PUBLIC WORKS
 CITY OF LAS VEGAS

| REV | DATE | BY | REVISION |
|-----|------|----|----------|
| | | | |
| | | | |
| | | | |

STORM DRAIN "LAKE-N" PLAN AND PROFILE
 STA. 300+00.00 TO STA. 307+50.00
 PROJECT MARTIN L. KING BLVD IMPROVEMENTS
 ALTA DR TO CAREY AVE

KEN D. GILBRETH
 CIVIL
 No. 9177

NO. NO. 6224
 DESIGNED BY LMW
 DRAWN BY CGM
 DATE 4/2/07
 SCALE HORIZ 1"=40'
 VERT. 1"=4'
 DRAWING SHEET
 SD10 OF 237 SHEETS