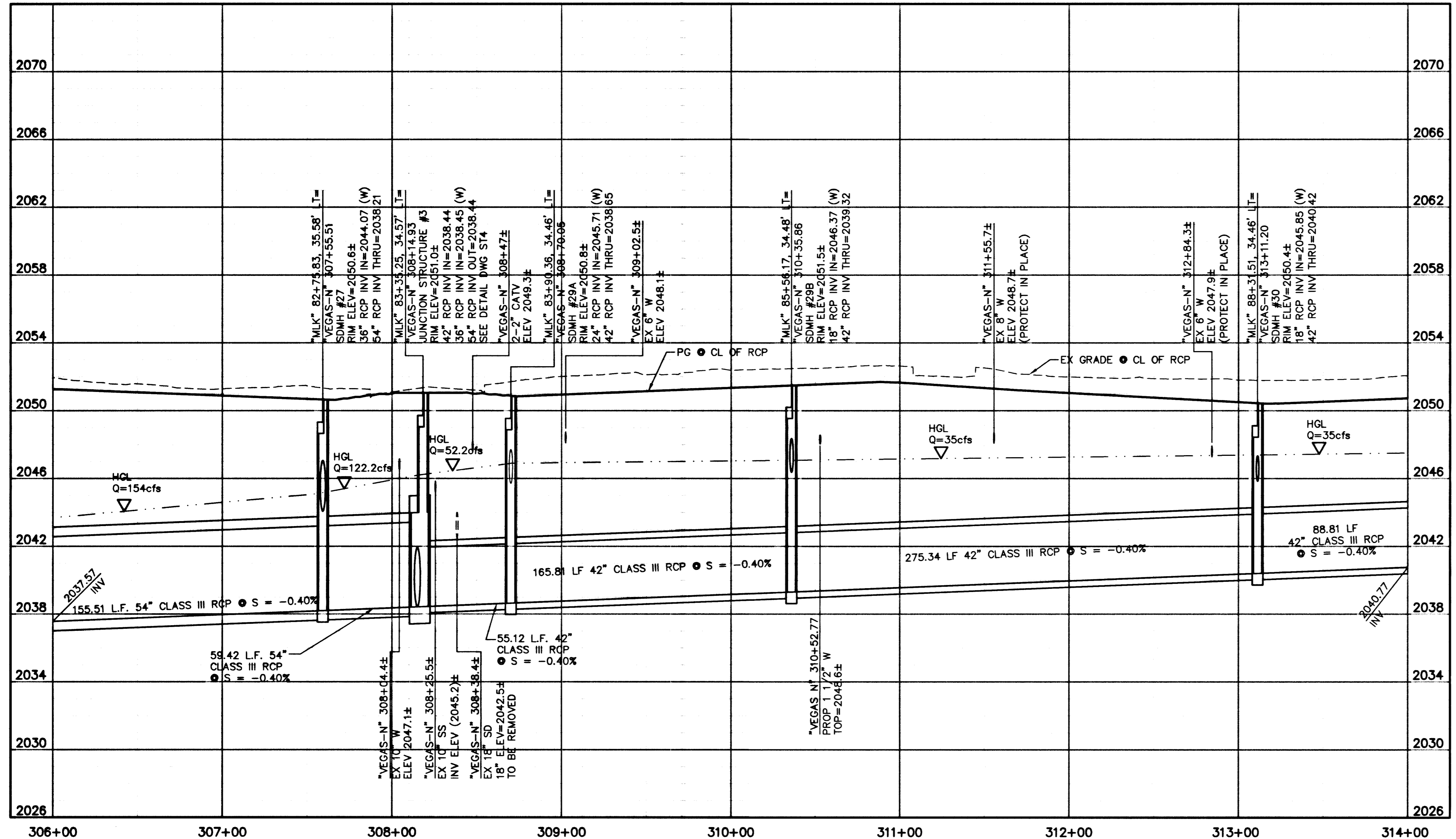


- LEGEND**
- NEW STORM DRAIN
 - CEMENT SLURRY ENCASEMENT (4" MIN.)

- CONSTRUCTION NOTES:**
- ① PROTECT IN PLACE
 - ② CONSTRUCT WITH CEMENT SLURRY ENCASEMENT PER UDACS SECTION 2.19
 - ⑦ REMOVE EXISTING STORM DRAIN PIPE, MANHOLE AND/OR DROP INLET. SEE RP1 THRU RP11 FOR LIMITS

- NOTES:**
1. SEE DRAWING I2 FOR GENERAL NOTES
 2. SEE DRAWING D1 FOR STORM DRAIN MANHOLE AND DROP INLET SCHEDULE
 3. CONTRACTOR SHALL VERIFY ALL HORIZONTAL AND VERTICAL LOCATIONS OF EXISTING UTILITIES PRIOR TO COMMENCEMENT OF CONSTRUCTION



SEE DRAWINGS RP1 - RP11 FOR REMOVAL PLANS

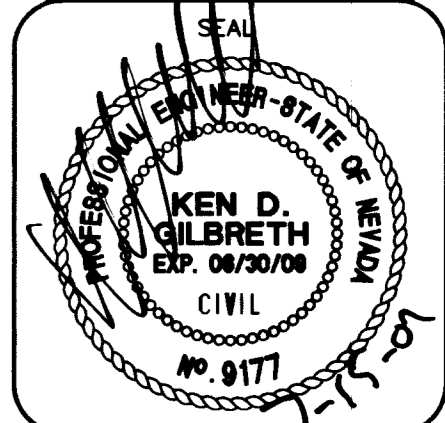
Avoid cutting underground utility lines. It's costly.
 2 working days
Call before you Dig
 1-800-227-2600
 Underground Service Alert (U.S.A.)

Avoid overhead power line contact.
 2 working days
Call before you Overhead
 1-702-227-2929
 Nevada Power Environment and Safety Services Department

APPROVED

Rakish J. Morgan
 LAS VEGAS VALLEY WATER DISTRICT
 DATE 7/19/07

TITLE: STORM DRAIN "VEGAS-N" PLAN AND PROFILE
 PROJECT: STA. 306+00.00 TO STA. 314+00.00
 MARTIN L. KING BLVD IMPROVEMENTS
 ALTA DR TO CAREY AVE



NO. NO. 6224
 DESIGNED BY LMW
 DRAWN BY CGM
 DATE 4/2/07
 SCALE: HORIZ. 1"=40'
 VERT. 1"=4'
 DRAWING SHEET 139 OF 237 SHEETS
 SD8

DEPARTMENT OF PUBLIC WORKS
 CITY OF LAS VEGAS

CONSULTING ENGINEERS • PLANNERS • LAND SURVEYORS
 2727 SOUTH RAINBOW BOULEVARD
 LAS VEGAS, NEVADA 89146-5148 PHONE (702) 875-7550 FAX (702) 362-2597

vtm nevada