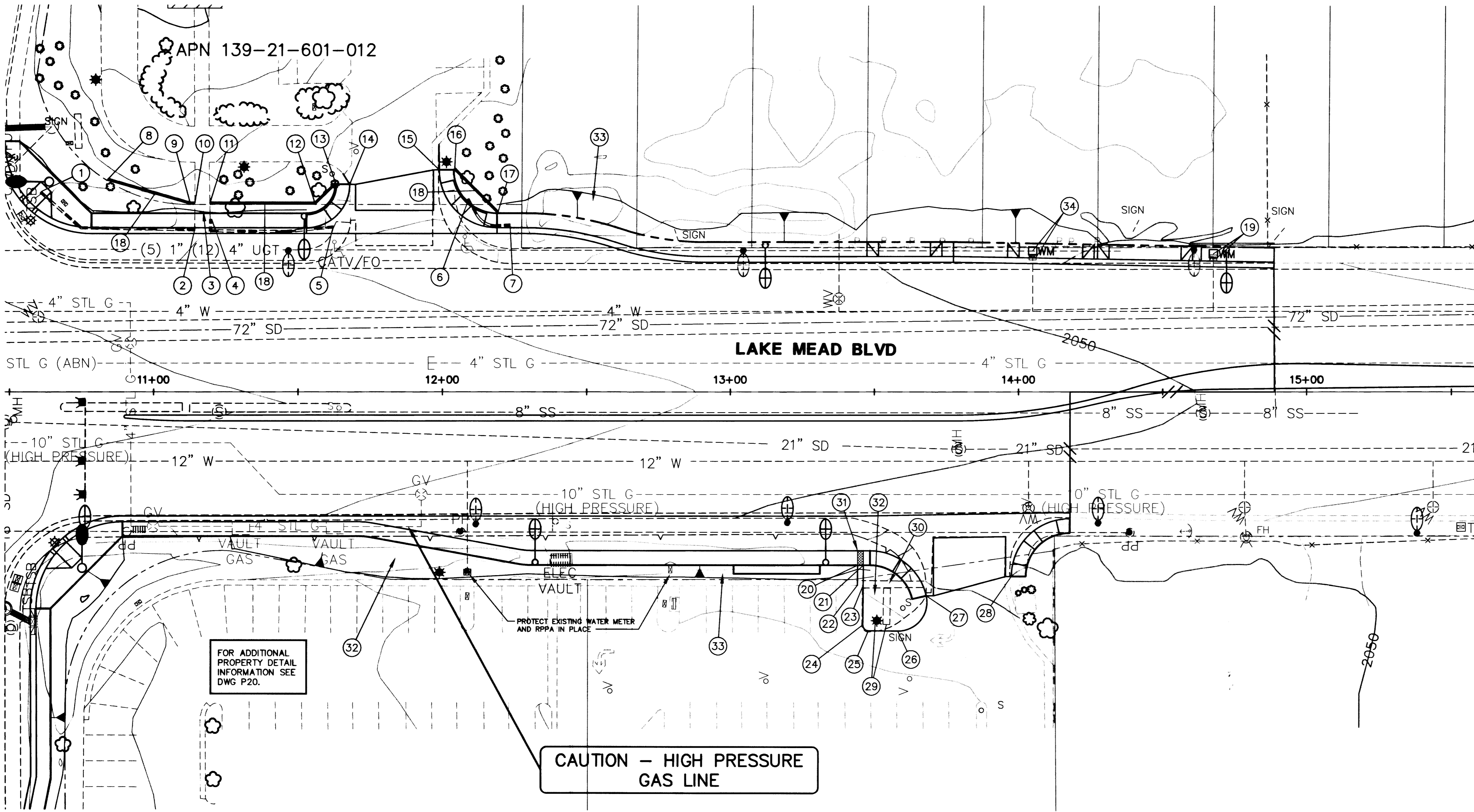
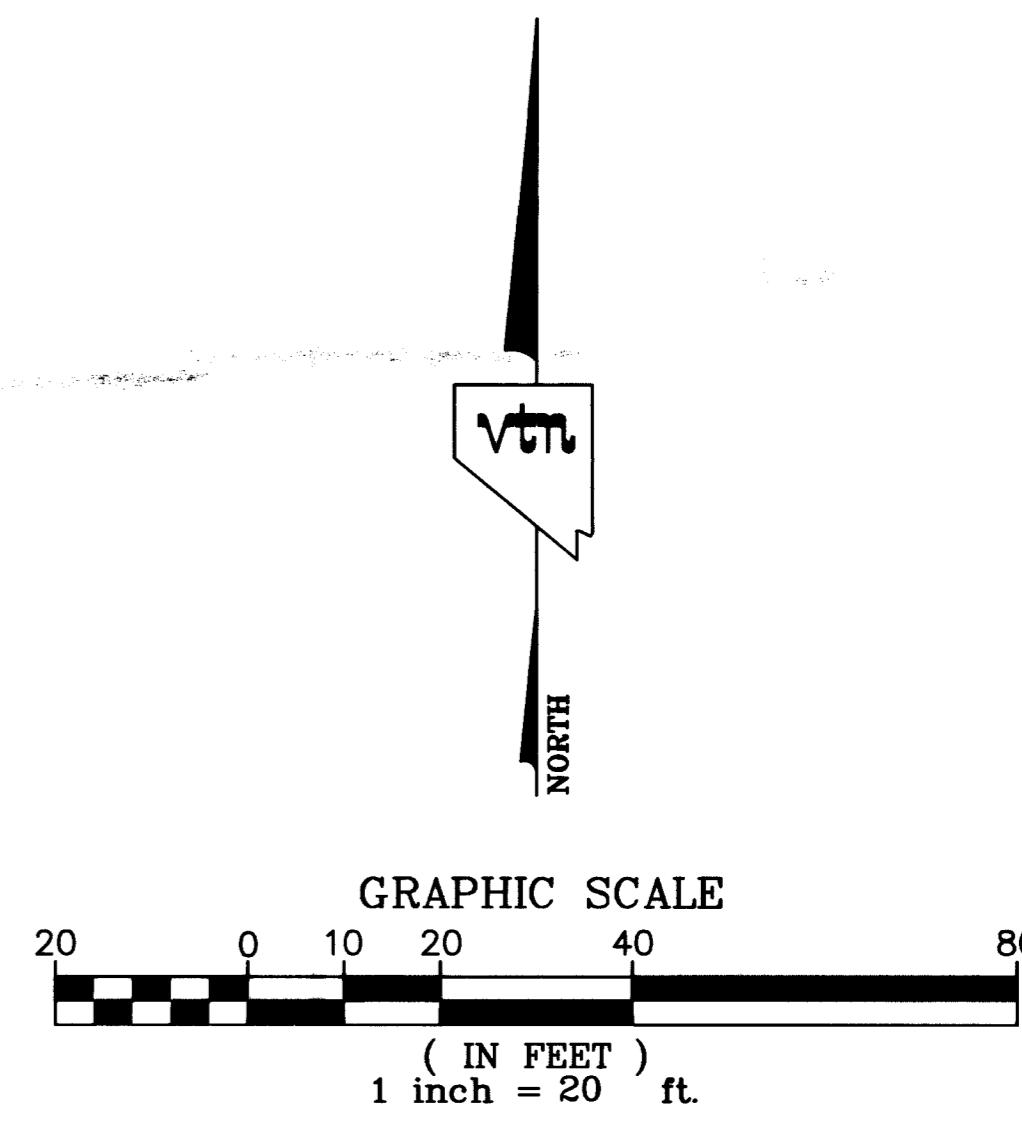


- ① "LAKE MEAD" STA. 10+61.08
OFFSET 69.58' LT
BEGIN BLOCKWALL REMOVAL
- ② "LAKE MEAD" STA. 11+14.31
OFFSET 56+63' LT
END BLOCKWALL REMOVAL
- ③ RESTORE LANDSCAPE TO ORIGINAL CONDITION OR BETTER
- ④ "LAKE MEAD" STA. 11+20.11
OFFSET 59.90' LT
BEGIN BLOCKWALL REMOVAL
- ⑤ "LAKE MEAD" STA. 11+62.23
OFFSET 57.61' LT
END BLOCKWALL REMOVAL
- ⑥ "LAKE MEAD" STA. 12+09.19
OFFSET 67.05' LT
BEGIN BLOCKWALL REMOVAL
- ⑦ "LAKE MEAD" STA. 12+23.41
OFFSET 58.26' LT
END BLOCKWALL REMOVAL
- ⑧ "LAKE MEAD" STA. 10+84.10
OFFSET 73.72' LT
END NEW BLOCKWALL
- ⑨ "LAKE MEAD" STA. 11+12.70
OFFSET 65.50' LT
ANGLE POINT BLOCKWALL
- ⑩ "LAKE MEAD" STA. 11+14.31
OFFSET 65.50' LT
BEGIN NEW BLOCKWALL
- ⑪ "LAKE MEAD" STA. 11+19.50
OFFSET 65.50' LT
END NEW BLOCKWALL
- ⑫ "LAKE MEAD" STA. 11+55.88
OFFSET 65.72' LT
ANGLE POINT BLOCKWALL
- ⑬ "LAKE MEAD" STA. 11+63.05
OFFSET 72.33' LT
BEGIN NEW BLOCKWALL
- ⑭ "LAKE MEAD" STA. 11+67.90
OFFSET 71.97' LT
TC=52.0±
CONNECT TO EXIST CURB
SAWCUT AND MATCH EXIST
- ⑮ "LAKE MEAD" STA. 11+98.90
OFFSET 76.97' LT
TC=51.5±
CONNECT TO EXIST CURB
SAWCUT AND MATCH EXIST
- ⑯ "LAKE MEAD" STA. 12+04.25
OFFSET 77.33' LT
BEGIN NEW BLOCKWALL
- ⑰ "LAKE MEAD" STA. 12+19.25
OFFSET 62.33' LT
END NEW BLOCKWALL
- ⑱ SEE BLOCKWALL DETAIL ON DRAWING D4A
- ⑲ "LAKE MEAD" STA. 14+67.58
OFFSET 47.91' LT
RELOCATE WATER METER TO NEW LOCATION ACCT# 60899
- ⑳ "LAKE MEAD" STA. 13+44.23
OFFSET 59.99' RT
BEGIN NEW "U" CHANNEL
PER DETAIL ON SHEET D4A
MATCH TO SIDEWALK DRAIN
- ㉑ "LAKE MEAD" STA. 13+46.23
OFFSET 60.03' RT
BEGIN NEW "U" CHANNEL
PER DETAIL ON SHEET D4A
MATCH TO SIDEWALK DRAIN
- ㉒ "LAKE MEAD" STA. 13+44.15
OFFSET 66.94' RT
BEGIN EXIST CURB REMOVAL
BEGIN NEW "U" CHANNEL
PER DETAIL ON SHEET D4A
CONNECT TO EXIST CURB
- ㉓ "LAKE MEAD" STA. 13+46.15
OFFSET 66.98' RT
END NEW "U" CHANNEL
PER DETAIL ON SHEET D4A
BEGIN EXIST CURB REMOVAL
BEGIN NEW "A" CURB
CONNECT TO "U" CHANNEL
- ㉔ "LAKE MEAD" STA. 13+45.96
OFFSET 80.64' RT
PT NEW "A" CURB
- ㉕ "LAKE MEAD" STA. 13+47.96
OFFSET 82.70' RT
PC NEW "A" CURB
- ㉖ "LAKE MEAD" STA. 13+58.15
OFFSET 82.82' RT
PT NEW "A" CURB
- ㉗ "LAKE MEAD" STA. 13+68.02
OFFSET 70.61' RT
TC=50.70'
END EXIST "A" CURB REMOVAL
END NEW "A" CURB
CONNECT TO NEW CURB RETURN
- ㉘ "LAKE MEAD" STA. 13+97.51
OFFSET 63.93' RT
TC=49.9±'
CONNECT TO EXIST CURB
- ㉙ PROTECT EXIST SIGN AND LIGHT IN PLACE
- ㉚ REMOVE EXIST "U" CHANNEL
- ㉛ "LAKE MEAD" STA. 13+45.23
OFFSET 55.03' RT
SIDEWALK UNDERDRAIN
- ㉜ RESTORE LANDSCAPE TO ORIGINAL CONDITION OR BETTER
- ㉝ 4:1 CUT TO DAYLIGHT
- ㉞ "LAKE MEAD" STA. 14+04.88
OFFSET 48.92' LT
RELOCATE WATER METER TO NEW LOCATION ACCT# 60900



FOR ADDITIONAL PROPERTY DETAIL INFORMATION SEE DWG P20.

CAUTION - HIGH PRESSURE GAS LINE

REVISION

NO.	DATE	BY

DEPARTMENT OF PUBLIC WORKS
CITY OF LAS VEGAS

CONSULTING ENGINEERS • PLANNERS • LAND SURVEYORS
2727 SOUTH RAINBOW BOULEVARD
LAS VEGAS, NEVADA 89146-5148 PHONE (702) 873-7550 FAX (702) 362-2597

vtm nevada

PROPERTY DETAILS

TITLE

PROJECT
MARTIN L. KING BLVD IMPROVEMENTS
ALTA DR TO CAREY AVE

SEAL

KEN D. GILBRETH
EXP. 06/30/08
CIVIL
9171

APPROVED

Robert J. Morgan 7/19/07
LAS VEGAS VALLEY WATER DISTRICT DATE

WO. NO. 6224
DESIGNED BY LMW
DRAWN BY CGM
DATE 4/2/07
SCALE HORIZ. 1"=20'
VERT. 1"=20'
DRAWING P23 SHEET 131 OF 237 SHEETS