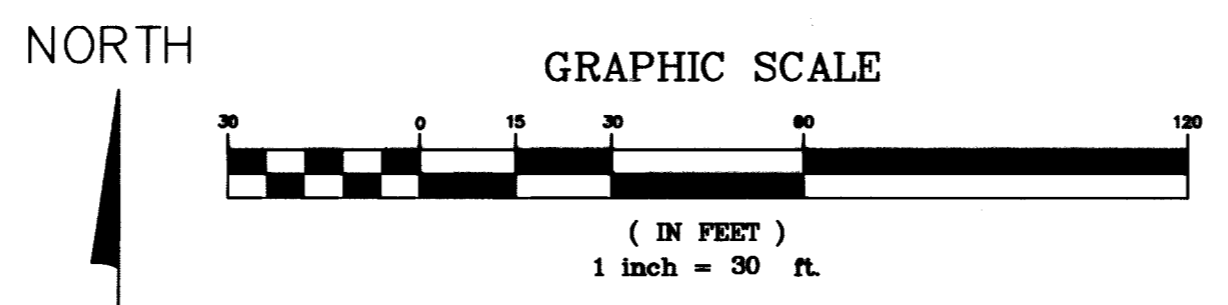
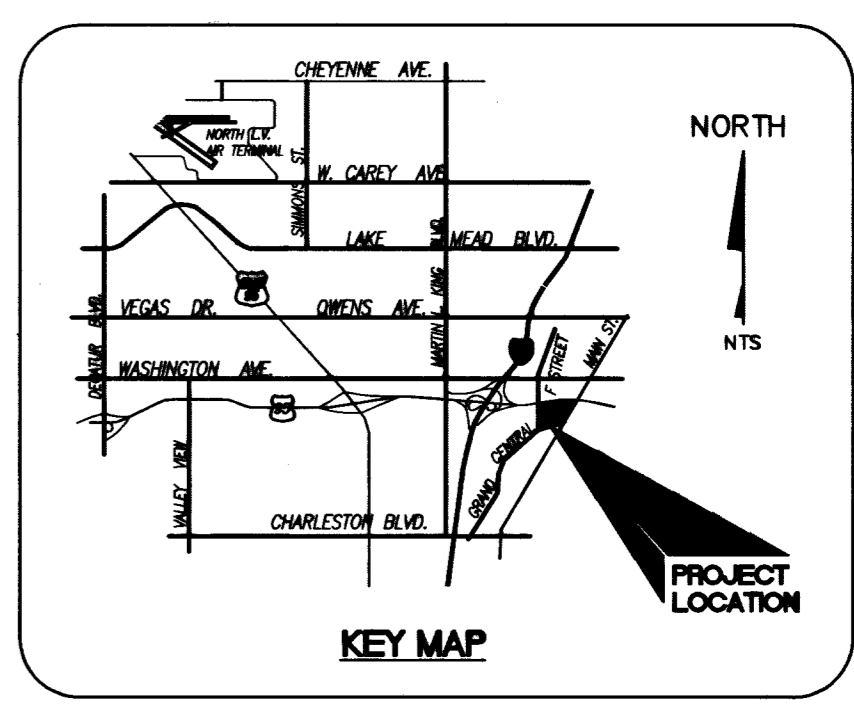


FULL BOX PLAN
SCALE: 1"=10'



PROFESSIONAL ENGINEER - STATE OF NEVADA
GARY A. STOCKHOFF
No. 12108
2-21-08
For Revision
S only



TRAFFIC CONSTRUCTION NOTES + CITY'S

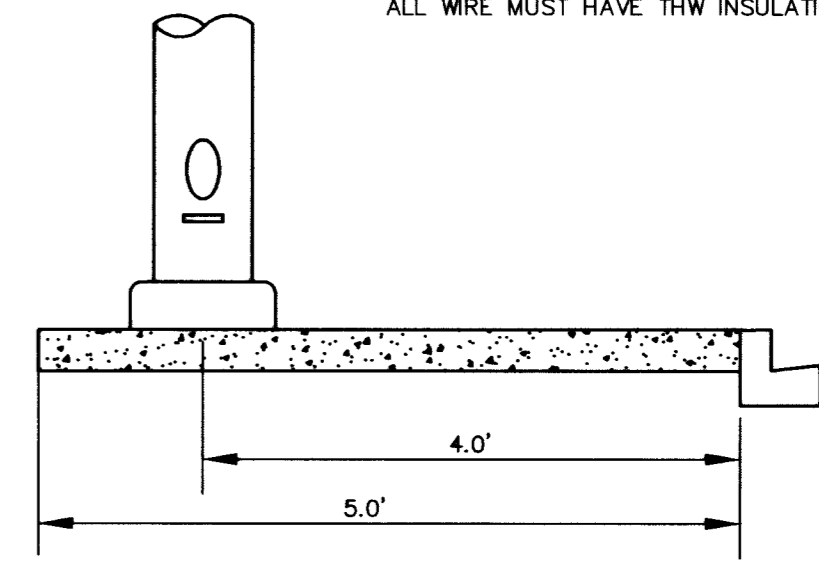
- 1 INSTALL R1-1 "STOP" SIGN, POLE MOUNTED (30"x30") 2 EA
- 2 INSTALL R7-1 "NO PARKING ANY TIME" PER MUTCD 2B.39 6 EA
- 3 INSTALL R3-7R "RIGHT TURN ONLY" SIGN PER MUTCD 2B.19 1 EA
- 4 INSTALL 8" WHITE LINE PER STD DWG 246 -
- 5 ~~NOT USED~~ -
- 6 INSTALL CROSSWALK MARKINGS PER STD DWG 254. -
- 7 NOT USED -
- 8 ENTIRE CURB TO BE PAINTED RED PER MUTCD 3B.21 -
- 9 PAINT 4" YELLOW STRIPS FOR "DELIVERY ONLY" AREA -
- 10 INSTALL 1 1/4" STILT CONDUIT -
- 11 INTERCEPT EXISTING STREET LIGHT CIRCUIT. REPULL CONDUCTORS. -
- 12 RELOCATED STREET LIGHT PULL BOX. -
- 13 RELOCATED ELECTRICAL PULL BOX. -
- 14 RELOCATED TRAFFIC SIGNAL PULL BOX. -
- 15 RELOCATED CABLE TV PULL BOX -
- 16 ADD RADIUS TO MEDIAN PER STD DWG 246. -

REMOVAL NOTES

- 1 REMOVE & RELOCATE EXIST STREET LIGHT 3 EA

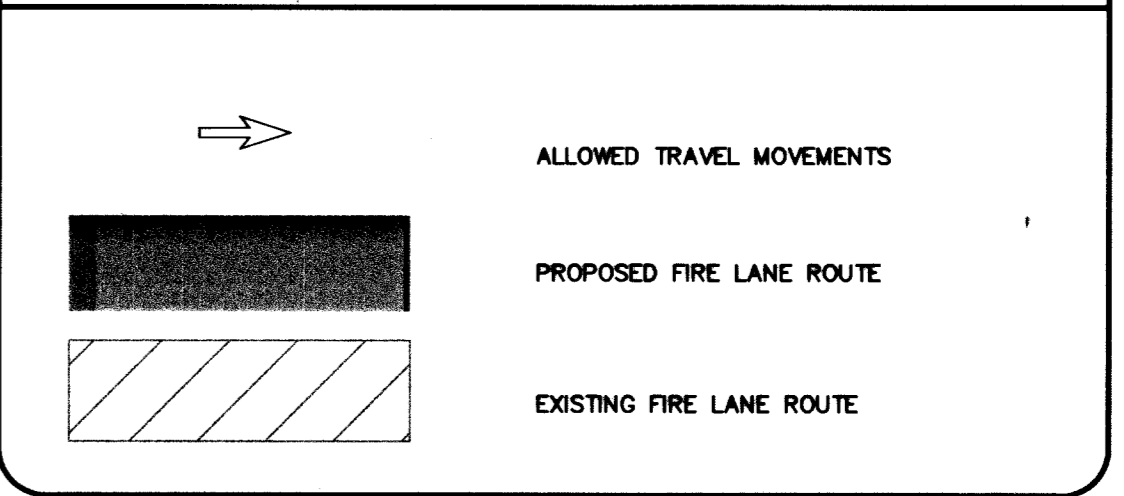
STREET LIGHT NOTE:

ALL HAND HOLE COVERS MUST BE INSTALLED, POLE CAPS PURGED, AND PULL BOX LIDS BOLTED DOWN PRIOR TO ENERGIZING CIRCUIT. ALL WIRE MUST HAVE THW INSULATION.



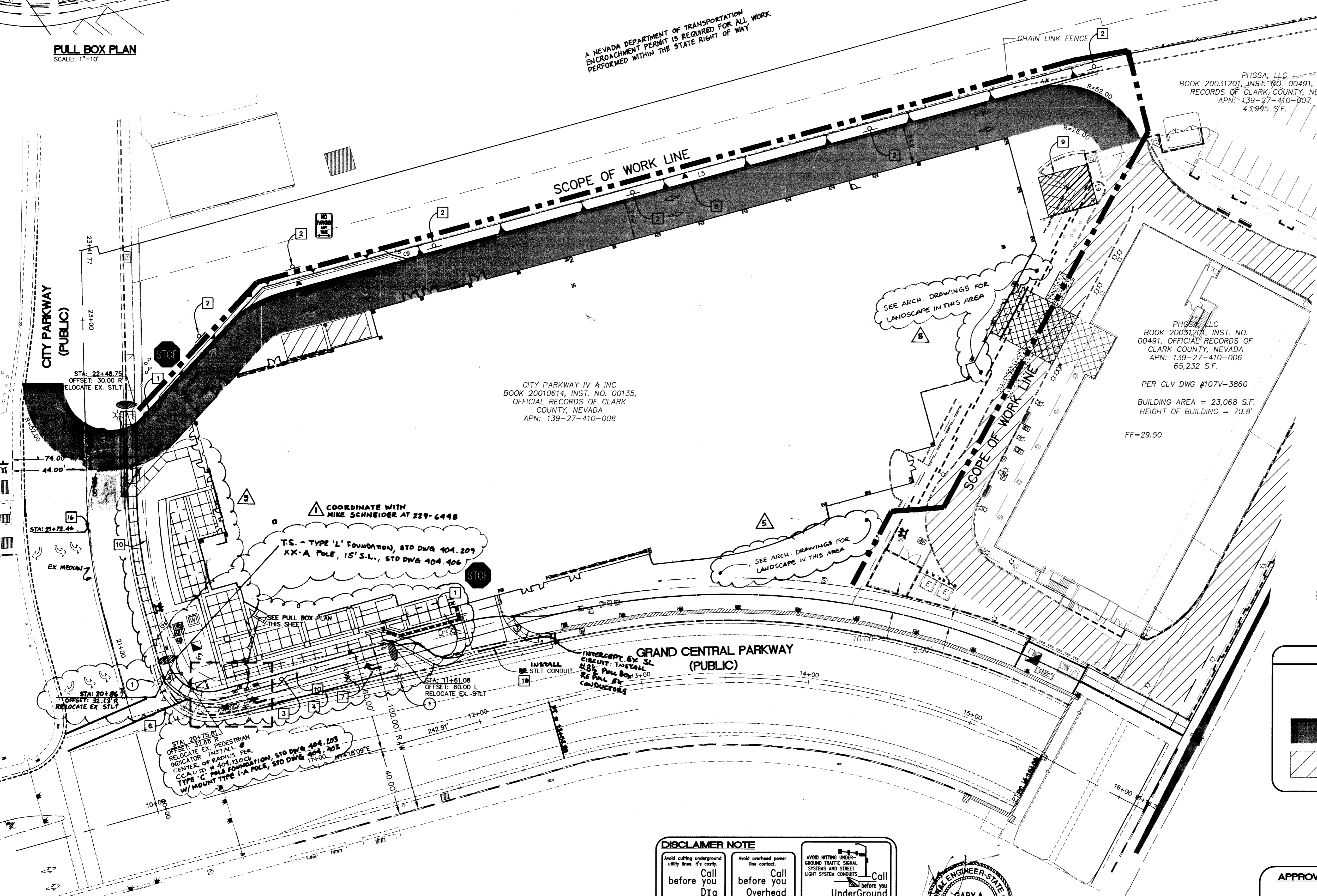
STREET LIGHT LOCATION

LEGEND



APPROVALS

[Signature]
CITY FIRE MARSHAL
9.9.05
DATE



CITY PARKWAY IV A INC
BOOK 20010614, INST. NO. 00135,
OFFICIAL RECORDS OF CLARK
COUNTY, NEVADA
APN: 139-27-410-008

PHGSA, LLC
BOOK 20031201, INST. NO. 00491,
RECORDS OF CLARK COUNTY, NV
APN: 139-27-410-002
43,995 S.F.

PHGSA, LLC
BOOK 20031201, INST. NO.
00491, OFFICIAL RECORDS OF
CLARK COUNTY, NEVADA
APN: 139-27-410-006
65,232 S.F.

PER CLV DWG #107V-3860
BUILDING AREA = 23,068 S.F.
HEIGHT OF BUILDING = 70.8'
FF=29.50

BASIS OF BEARINGS

NORTH 74°18'09" EAST, BEING THE BEARING OF THE CENTERLINE OF GRAND CENTRAL PARKWAY FROM THE INTERSECTION WITH F STREET, NORTHEASTERLY LOCATED IN THE SOUTH HALF (S 1/2) OF THE SOUTHWEST QUARTER (SW 1/4) OF SECTION 27, TOWNSHIP 20 SOUTH, RANGE 61 EAST, M.D.M., CITY OF LAS VEGAS, COUNTY OF CLARK, STATE OF NEVADA, AS SHOWN IN FILE 133 OF SURVEYS AT PAGE 92, OFFICIAL RECORDS, SAID COUNTY AND STATE.

BENCHMARK

CITY OF LAS VEGAS VERTICAL CONTROL POINT "2LV01 2856", BEING A RIVET & PLATE IN TOP OF CURB @ 1000 W. BONANZA, ELEVATION: 2044.45 (FEET) 623.1484 (METERS). CITY OF LAS VEGAS VERTICAL CONTROL v.2002 BASED ON NORTH AMERICAN VERTICAL DATUM OF 1988 (NAVD 88).

DISCLAIMER NOTE

Avoid cutting underground utility lines. If's costly:
before Call you Dig
1-800-227-2600
UNDERGROUND SERVICE (USA)

Avoid overhead power line contact:
before Call you Overhead
1-702-227-2929
NEVADA POWER OVERHEAD AND SAFETY SERVICES (NPOSS)

Avoid hitting underground ground traffic signal systems and street light system conduits:
before Call you UnderGround
1-702-455-7511
1-702-229-6511
CLARK COUNTY TRAFFIC SIGNALS AND STREET LIGHTS (CC-TSSL)

UTILITY LOCATIONS SHOWN HEREON ARE APPROXIMATE ONLY. IT SHALL BE THE CONTRACTOR'S RESPONSIBILITY TO DETERMINE THE EXACT HORIZONTAL AND VERTICAL LOCATION OF ALL EXISTING UNDERGROUND OR OVERHEAD UTILITIES PRIOR TO COMMENCING CONSTRUCTION. NO REPRESENTATION IS MADE THAT ALL EXISTING UTILITIES ARE SHOWN HEREON. THE ENGINEER ASSUMES NO RESPONSIBILITY FOR UTILITIES NOT SHOWN OR UTILITIES NOT SHOWN IN THEIR PROPER LOCATION.

PROFESSIONAL ENGINEER - STATE OF NEVADA
GARY A. STOCKHOFF
No. 12108
12-08-06
ep. 6/30/08
For Revision
only

108985
64102-21 98639

PROJ NO: 613.002
DESIGN: PG/RTM
PLOT DATE: 09/09/05
SCALE: AS SHOWN
STAMP DATE: 9/14/05
8395 W. SUNSET ROAD
Suite 150
Las Vegas, NV 89113
Tel: 702-650-0572
Fax: 702-307-4222
Web: trcsolutions.com
TRC
Customer-Focused Solutions
BY Engineering Nevada
MOLASKY CORPORATE CENTER
TRAFFIC / STREET LIGHT / FIRE ROUTE PLAN
SHEET
7
OF 9 SHTS
PROJECT ID
107N4479