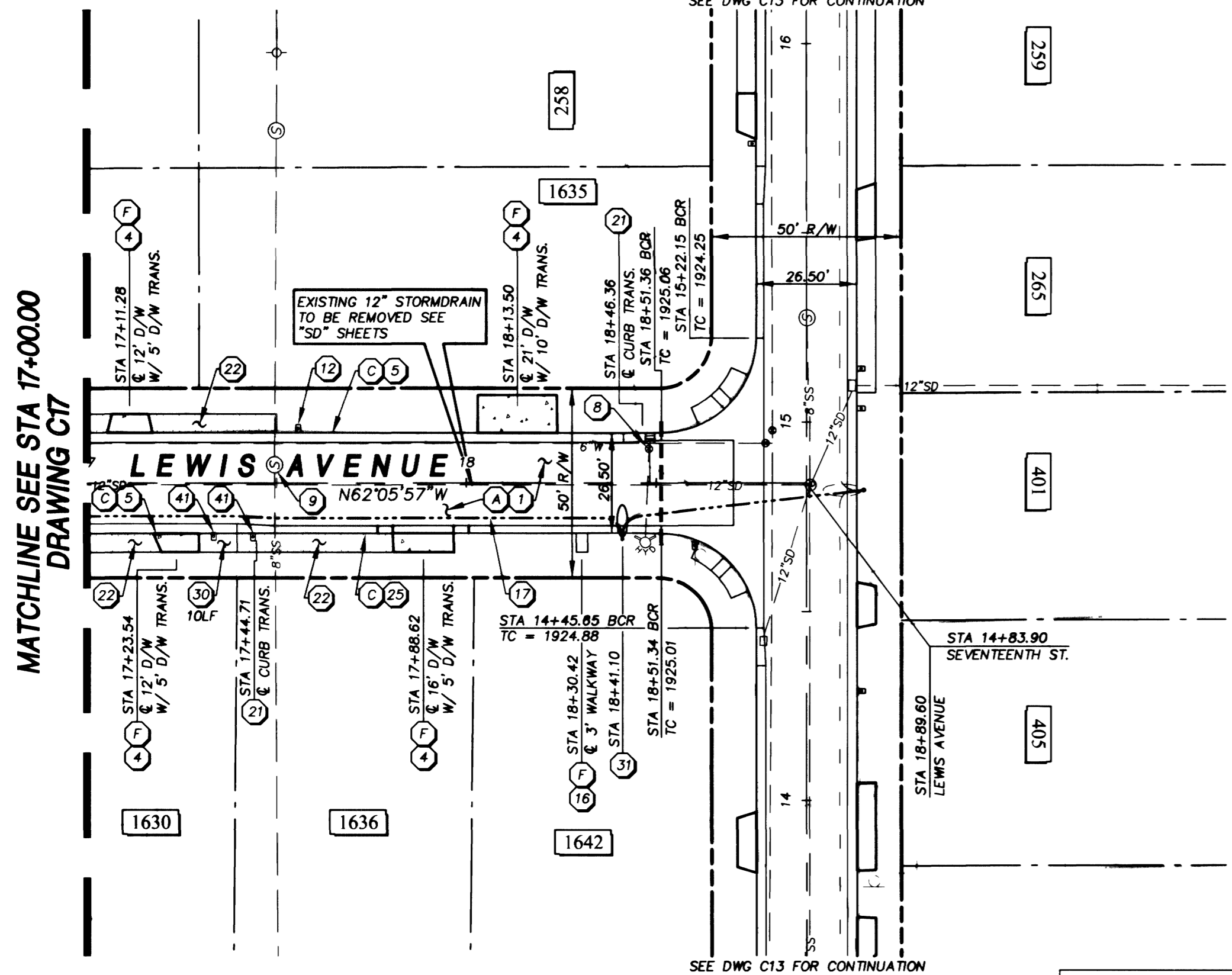


Call before you Dig
1-800-227-2600
Nevada Power, Environment and Safety Services Department

Call before you Overhead
1-702-593-6111
Nevada Power, Environment and Safety Services Department

SEVENTEENTH STREET
SEE DWG C13 FOR CONTINUATION

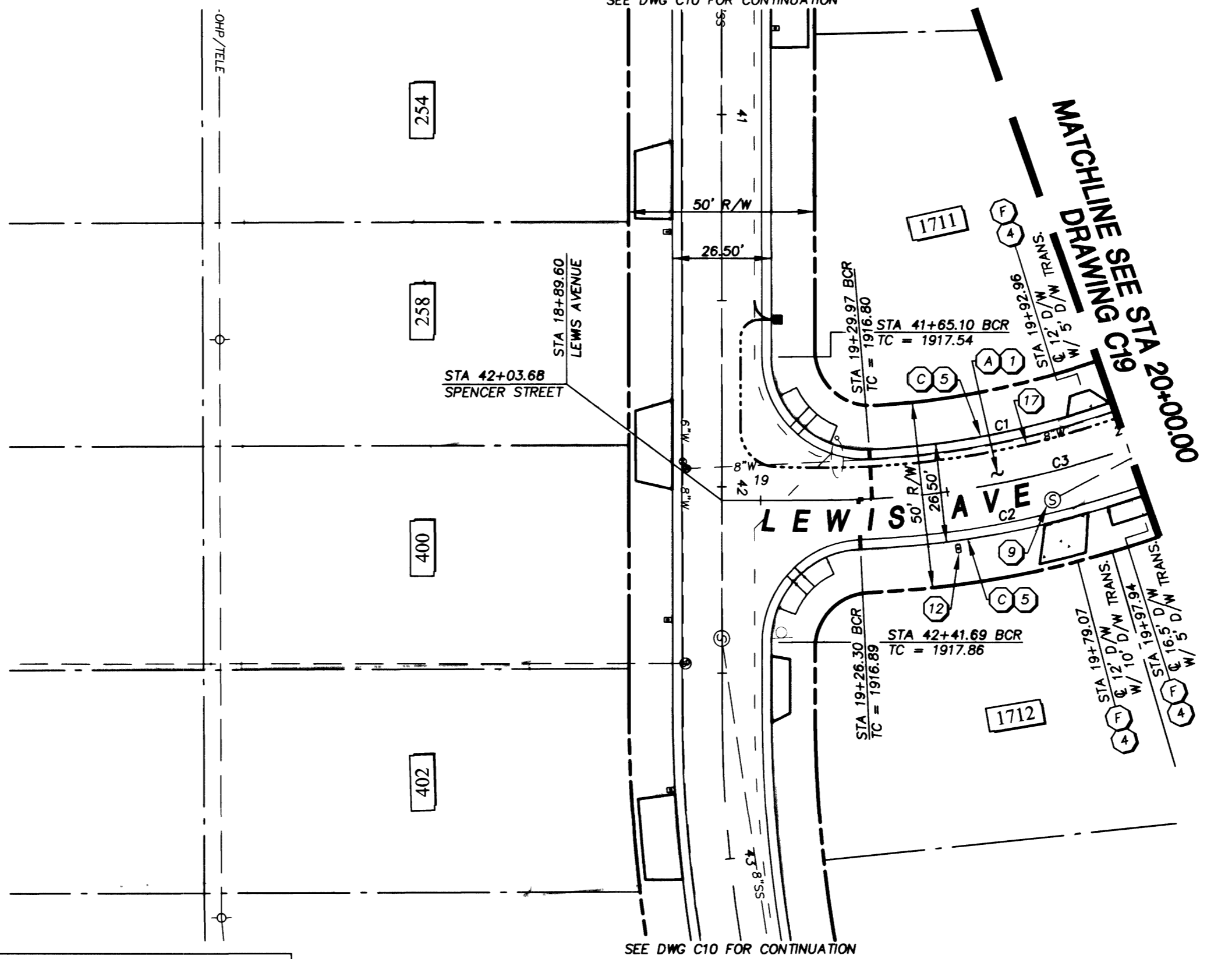


MATCHLINE SEE STA 17+00.00
DRAWING C17

APPROVED FOR CONSTRUCTION
1st App'd 10/5/01
DATE

NOTE:
1. FOR VALLEY GUTTER ENLARGEMENTS, REFER TO DWGS. C28 & C29.
2. EXISTING STREETLIGHT CONDUIT IS SHOWN FOR REFERENCE ONLY, AND SHALL BE PROTECTED IN PLACE. CONTRACTOR TO VERIFY LOCATION AND DEPTH PRIOR TO CONSTRUCTION.

SPENCER STREET
SEE DWG C10 FOR CONTINUATION



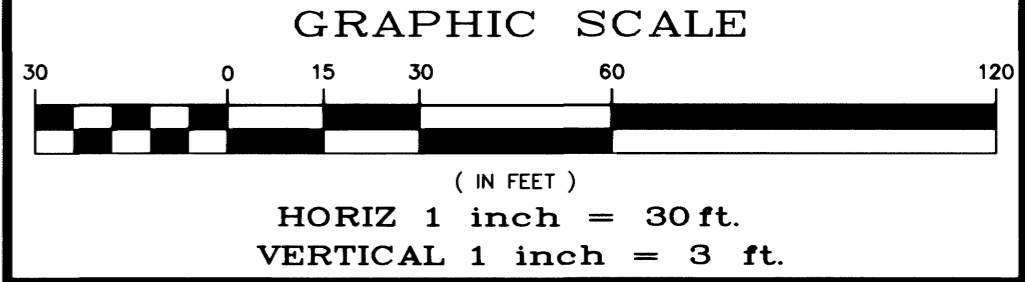
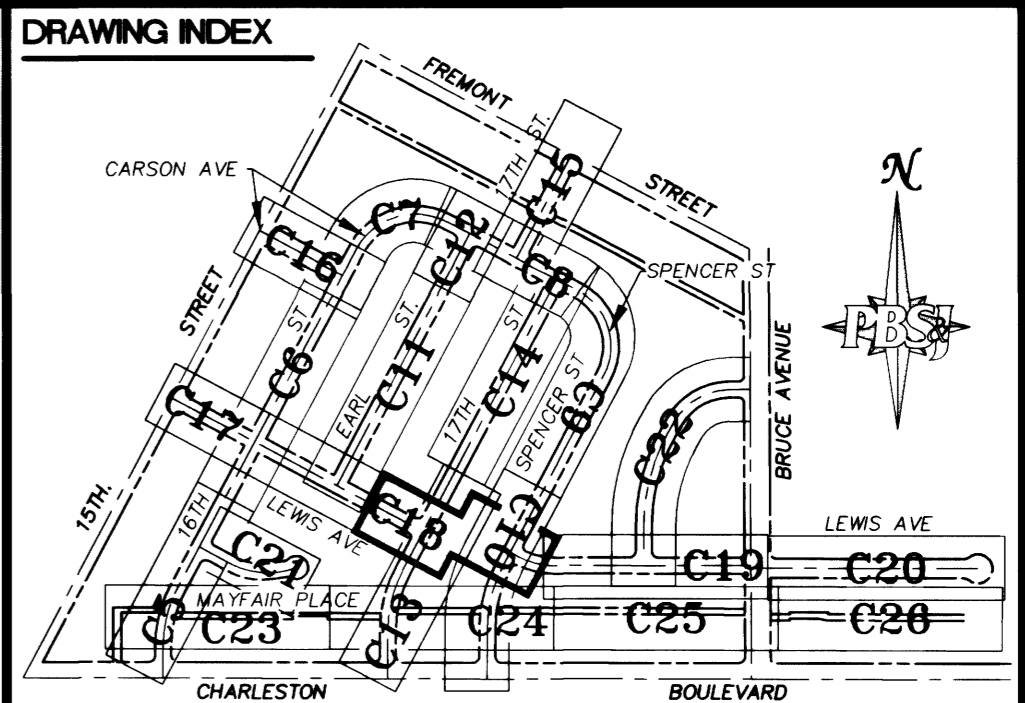
MATCHLINE SEE STA 20+00.00
DRAWING C19

CURVE DATA

No.	RADIUS	DELTA	LENGTH	TANGENT
C1	236.75'	24°36'56"	101.71'	51.65'
C2	263.25'	25°27'16"	116.95'	59.46'

CURVE DATA

No.	RADIUS	DELTA	LENGTH	TANGENT
C3	250.00'	27°46'29"	121.19'	61.81'

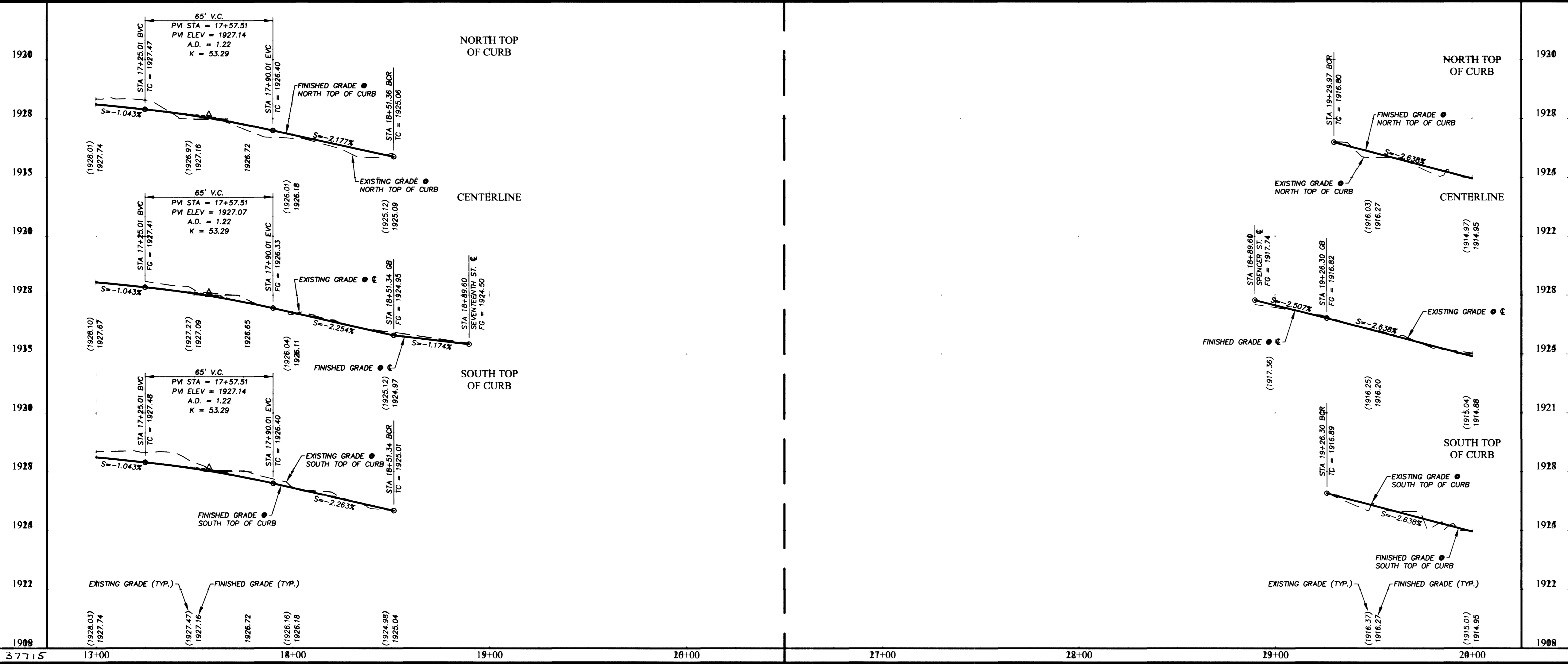


BASIS OF BEARING
THE CENTERLINE OF FREMONT STREET BEARS S 62°04'40" E BETWEEN FIFTEENTH STREET AND BRUCE STREET PER A MAP IN FILE #7 OF SURVEYS, PAGE 79, OFFICIAL RECORDS ON FILE IN THE CLARK COUNTY RECORDERS OFFICE.

BENCHMARK
IN TOP OF CURB, NORTHEAST RETURN OF CHARLESTON BOULEVARD AND 17th STREET. NAVD 1988 DATUM
ELEVATION = 587.1645 METERS
1926.39 FEET

CAUTION:
EXISTING UTILITIES ARE LOCATED ON THE PLANS FROM A SEARCH OF AVAILABLE RECORDS. CONTRACTOR TO VERIFY LOCATIONS AND DEPTHS PRIOR TO CONSTRUCTION.

- KEY NOTES**
- REMOVAL ITEMS:**
- REMOVE EXISTING ASPHALT PAVEMENT. (202.00.01)
 - REMOVE EXISTING CONCRETE VALLEY GUTTER. (202.00.04)
 - REMOVE EXISTING CONCRETE CURB AND GUTTER. (202.00.02)
 - REMOVE EXISTING SIDEWALK. (202.00.03)
 - REMOVE EXISTING STREETLIGHT FOUNDATION PER DETAIL "T" DWG. C30. (623.00.02)
 - REMOVE EXISTING CONCRETE TRANSITION. (202.00.05)
 - REMOVE EXISTING ALLEY DRIVEWAY PAN. (202.00.06)
- CONSTRUCTION ITEMS:**
- CONSTRUCT STRUCTURAL SECTION PER TYPICAL SECTIONS, SEE DWG. C3. (203.00.01, 302.00.01, 404.00.01)
 - CONSTRUCT 'B' CONCRETE VALLEY GUTTER PER STD. DWG. #228. (613.00.05)
 - CONSTRUCT '5' CONCRETE SIDEWALK PER STD. DWG. #234. (613.00.01)
 - CONSTRUCT CONCRETE DRIVEWAY TRANSITION PER DETAIL "D" DWG. C30. (613.00.07)
 - CONSTRUCT 30" ROLL TYPE CURB AND GUTTER PER STD. DWG. #217A. (613.00.02)
 - SET TYPE III MONUMENT PER STD. DWG. #241. SEE NOTE 1, DWG. C4 (622.00.01)
 - SAW CUT & MATCH EXISTING. (202.00.01, 202.00.02, 202.00.03, 202.00.04, 202.00.05, 202.00.06)
 - ADJUST EXISTING VALVE BOX TO FG PER UDACS PLATE #8. (629.00.01)
 - ADJUST MANHOLE TO FG PER STD. DWG. #408. (609.00.04)
 - CONSTRUCTION EASEMENT AS NOTED.
 - REMOVE EXISTING SIGN AND POST, RESET EXISTING SIGN ON NEW POST. (627.00.01)
 - CONSTRUCT NEW NON-TRAFFIC BEARING WATER METER BOX AND ADJUST SERVICE CONNECTION AS NEEDED PER UDACS PLATE #1A-D. (629.00.10)
 - PAINT CURB RED 15" EACH SIDE OF FIRE HYDRANT EXCEPT FOR DRIVEWAYS. (613.00.02, 613.00.03)
 - ADJUST FIRE HYDRANT TO FG PER UDACS STD. PLATE #7. (629.00.02)
 - CONSTRUCT '4' ALLEY CONCRETE VALLEY GUTTER SEE DWG. C3. (613.00.06)
 - CONSTRUCT CONCRETE WALKWAY TRANSITION (MATCH EXISTING THICKNESS - 4" MIN. AND EXISTING WIDTH). (613.00.01)
 - INSTALL 1 1/4" PVC CONDUIT W/2 #4 AND 1 #8 THW. PER DETAIL "C" DWG. C30. (623.00.06)
 - CONSTRUCT ASPHALT DRIVEWAY TRANSITION PER DETAIL "D" DWG. C30. (404.00.02)
 - CONSTRUCT TYPE II DRIVEWAY TRANSITION PER DETAIL "D" DWG. C30. (302.00.01)
 - RELOCATE EXISTING 100W STREETLIGHT ASSEMBLY PER STD. DWG. #314, #321 AND DETAIL "T" DWG. C30. (623.00.05)
 - CONSTRUCT CURB TRANSITION PER DETAIL "E" DWG. C30. (613.00.03)
 - IRRIGATION AND LANDSCAPE REPAIR, GRADE FOR POSITIVE DRAINAGE. REFER TO GENERAL NOTES #7, DWG. C2. (212.00.01)
 - CONSTRUCT FIRE HYDRANT SHEAR PAD PER UDACS STD. PLATE #7. (629.00.02)
 - CONSTRUCT NEW TRAFFIC BEARING WATER METER BOX AND ADJUST SERVICE CONNECTION AS NEEDED PER UDACS PLATE #1A-D. (629.00.04)
 - CONSTRUCT "L" TYPE CURB & GUTTER PER STD DWG #216. (613.00.03)
 - CONSTRUCT DEPRESSED ALLEY CONCRETE DRIVEWAY PER STD. DWG. #227. (613.00.04)
 - CONNECT TO EXISTING CONDUIT. (623.00.04)
 - INTERCEPT EXISTING STREETLIGHT CONDUIT, INSTALL #3 1/2 PULL BOX PER DETAIL "T" DWG. C30. (623.00.03)
 - INSTALL #3 1/2 PULL BOX PER STD. DWG. #341. (623.00.04)
 - CONSTRUCT CONCRETE FLATWORK PER DETAIL "A" DWG. C31. (613.00.08)
 - INSTALL 100W STREETLIGHT ASSEMBLY PER STD. DWGS. #314 & #321. (623.00.01)
 - INSTALL 1 1/4" PVC CONDUIT. (623.00.07)
 - CONSTRUCT SEWER REPAIR PER DETAIL "B" DWG. C31. (630.00.01)
 - CONSTRUCT 30" VALLEY GUTTER, MODIFIED COMMERCIAL DRIVEWAY OPTION C PER DETAIL "E" DWG. C31. (613.00.10)
 - CONSTRUCT CURB CAP PER DETAIL "D" DWG. C31. (629.00.02, 629.00.03)
 - CONSTRUCT SIDEWALK RAMP PER STD. DWG. #235 CASE III. (613.00.01)
 - INSTALL TYPE I FILM CROSSWALK BARS PER MUTCD 3-14C. (628.00.01)
 - CONSTRUCT CONCRETE DITCH/GUTTER PER DETAILS "B" DWG. C32. (613.00.09)
 - ADJUST EXISTING 100W STREETLIGHT ASSEMBLY - EXISTING FOUNDATION. PER STD DWGS. # 314 & 321. (623.00.06)
 - CONSTRUCT MODIFIED CURB SECTION PER DETAIL "A" DWG. C32. (613.00.03)
 - REPLACE WATER SERVICE LATERAL PER "PE" WATER LATERAL SERVICE REPLACEMENT TABLE" DWG. 01. (629.00.11)



REVISIONS

NO.	DATE	DESCRIPTION

DEPARTMENT OF PUBLIC WORKS

ENGINEERING DESIGN SECTION
CITY ENGINEER: CHARLES KAKOWSKI, JR., P.E.
CITY PROJECT ENGINEER: JERRY L. TURNER, P.E.
PROJECT MANAGER: ALI ZENHARI, P.E.
DESIGNED BY: AZ/MB
DRAWN BY: LSB/WHJ
CHECKED: DOUGER-3, 2001
DATE: 10/4/01

ENGINEERING - PLANNING - SURVEYING - CONSTRUCTION SERVICES

PBS&J
901 N. Green Valley Pkwy.
Henderson, Nevada 89014
Telephone: 702/263-7275
Facsimile: 702/263-7200

**MAYFAIR NEIGHBORHOOD
STREET REHABILITATION**

**LEWIS AVENUE PLAN AND PROFILE
STA 17+00.00 TO STA 20+00.00**

TITLE: C18
SHEET: 18 of 44
DRAWING NO. 107-V3391

D:\DWG\1117\mayfair\3C18-1117.dwg Dec 05, 2001 11:00am