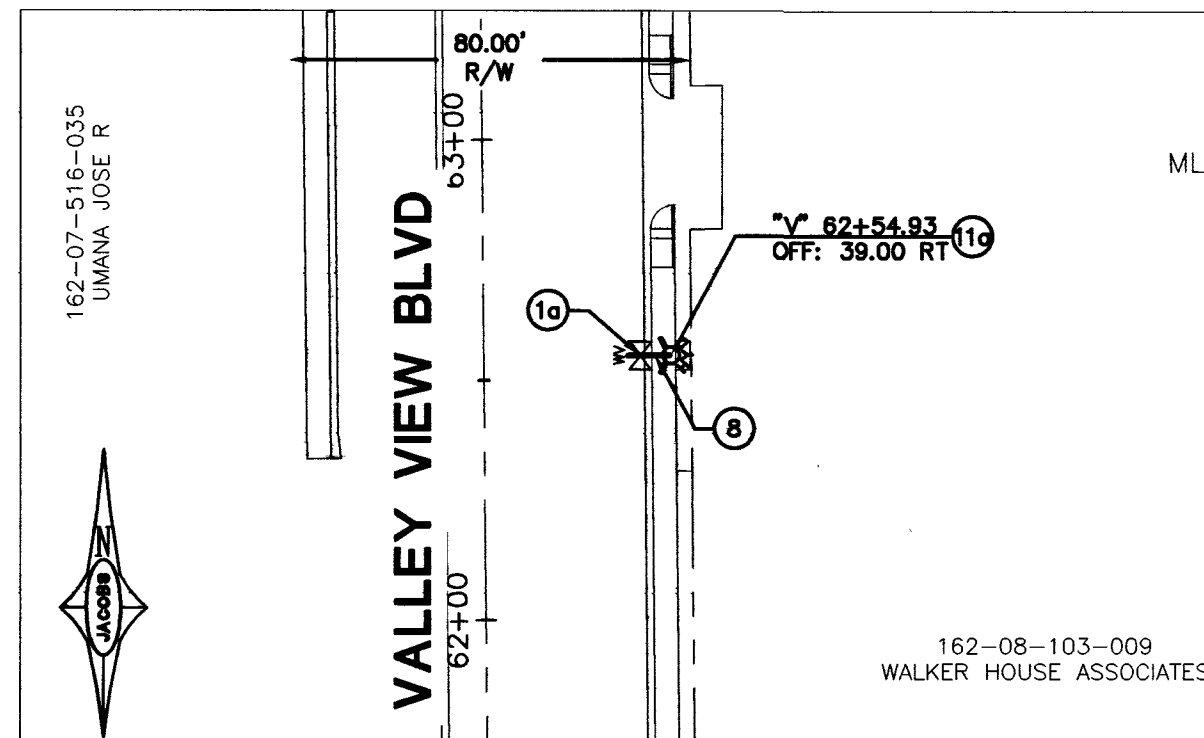
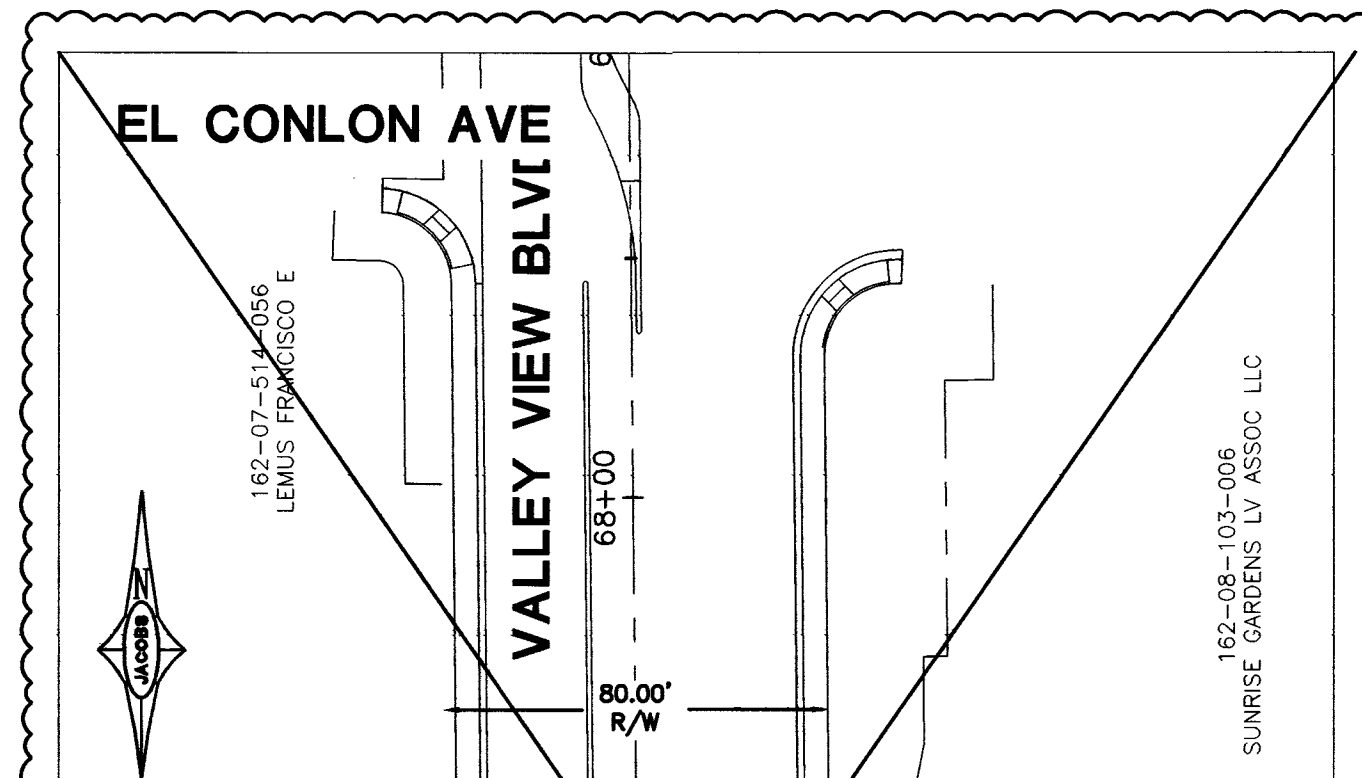


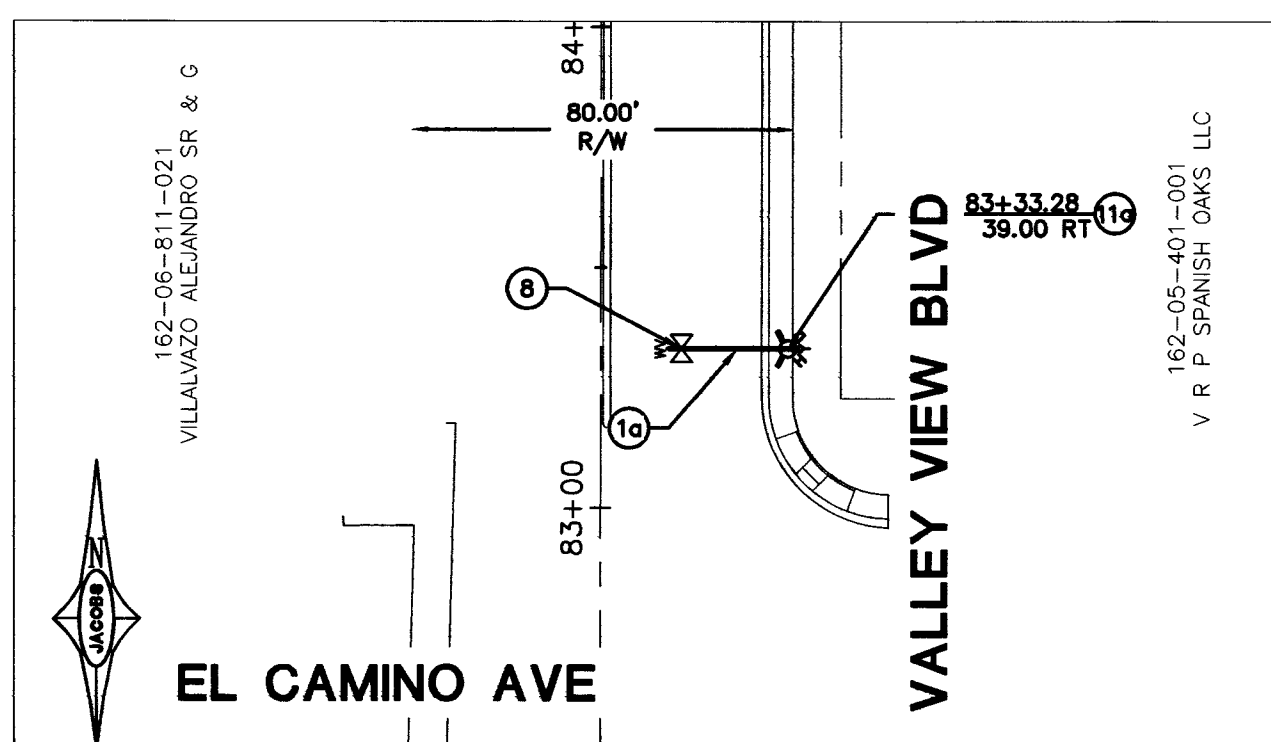
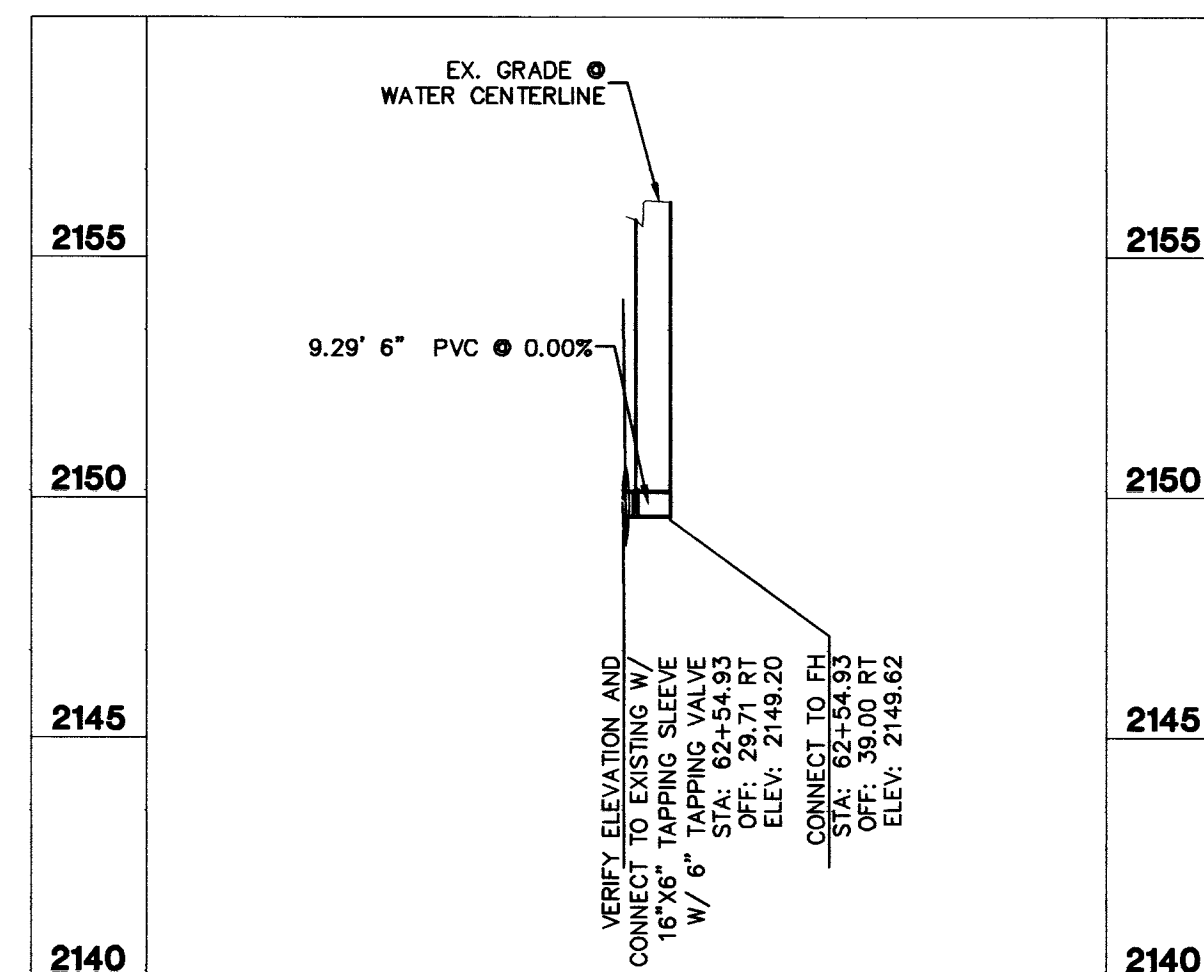
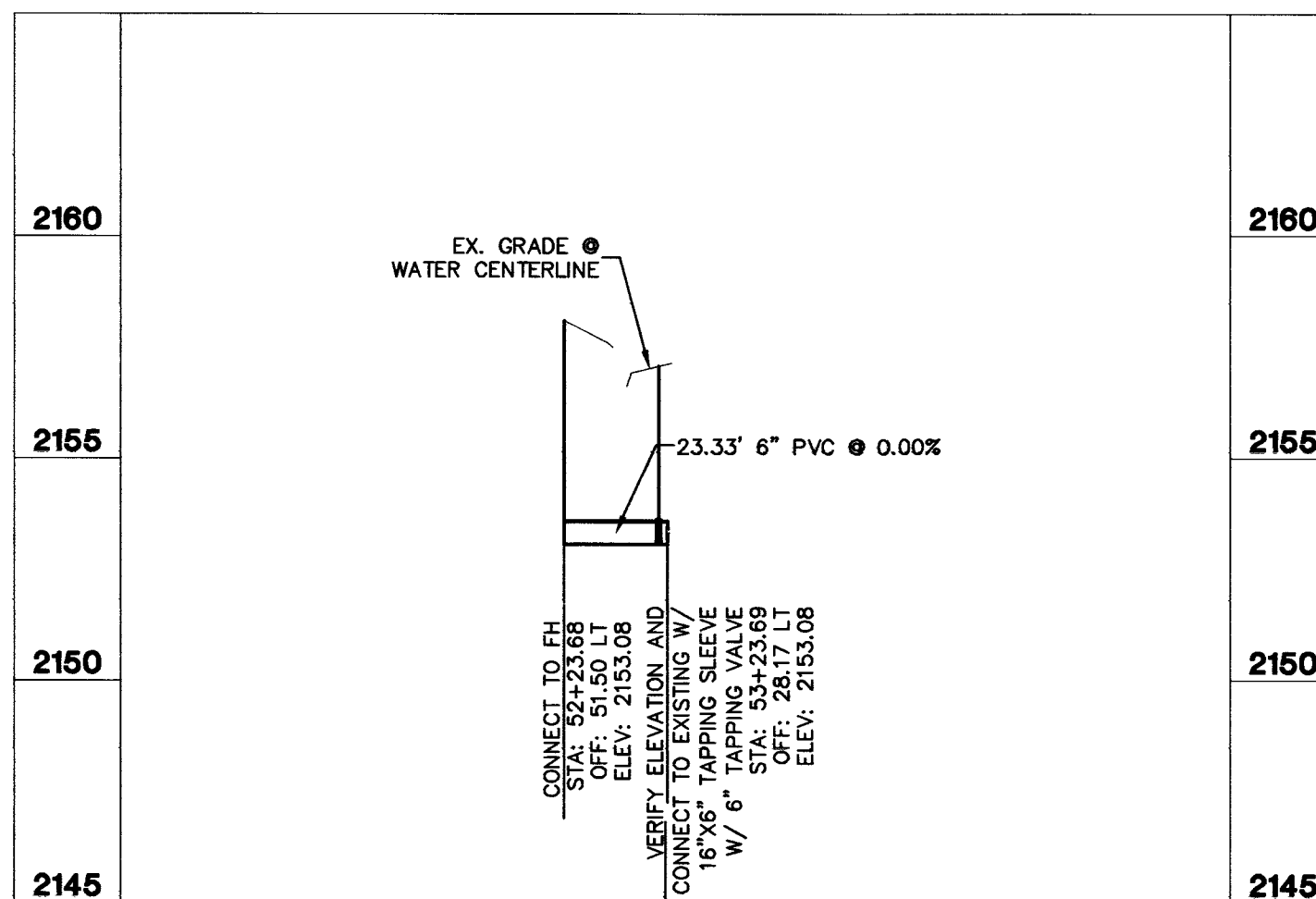
**3801 SILVER DOLLAR**  
\*V\* STA 52+24.00



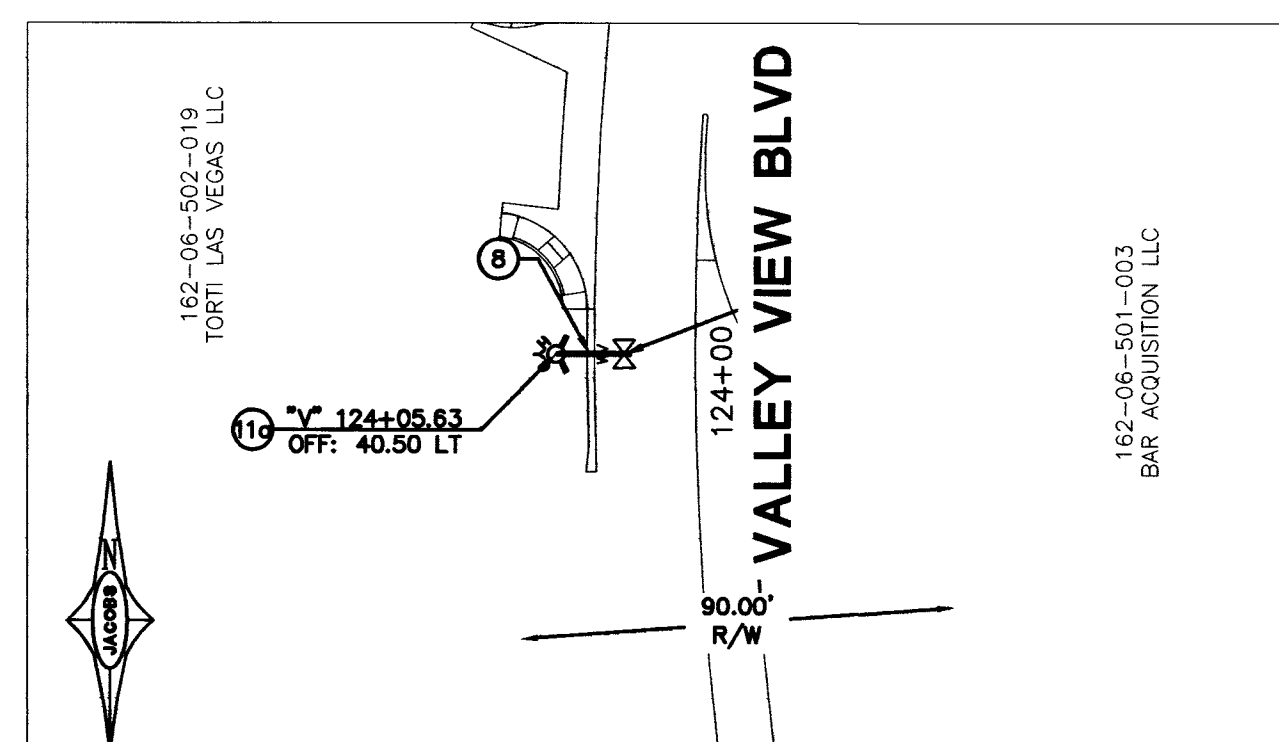
**2810 S. VALLEY VIEW**  
\*V\* STA 62+55.00



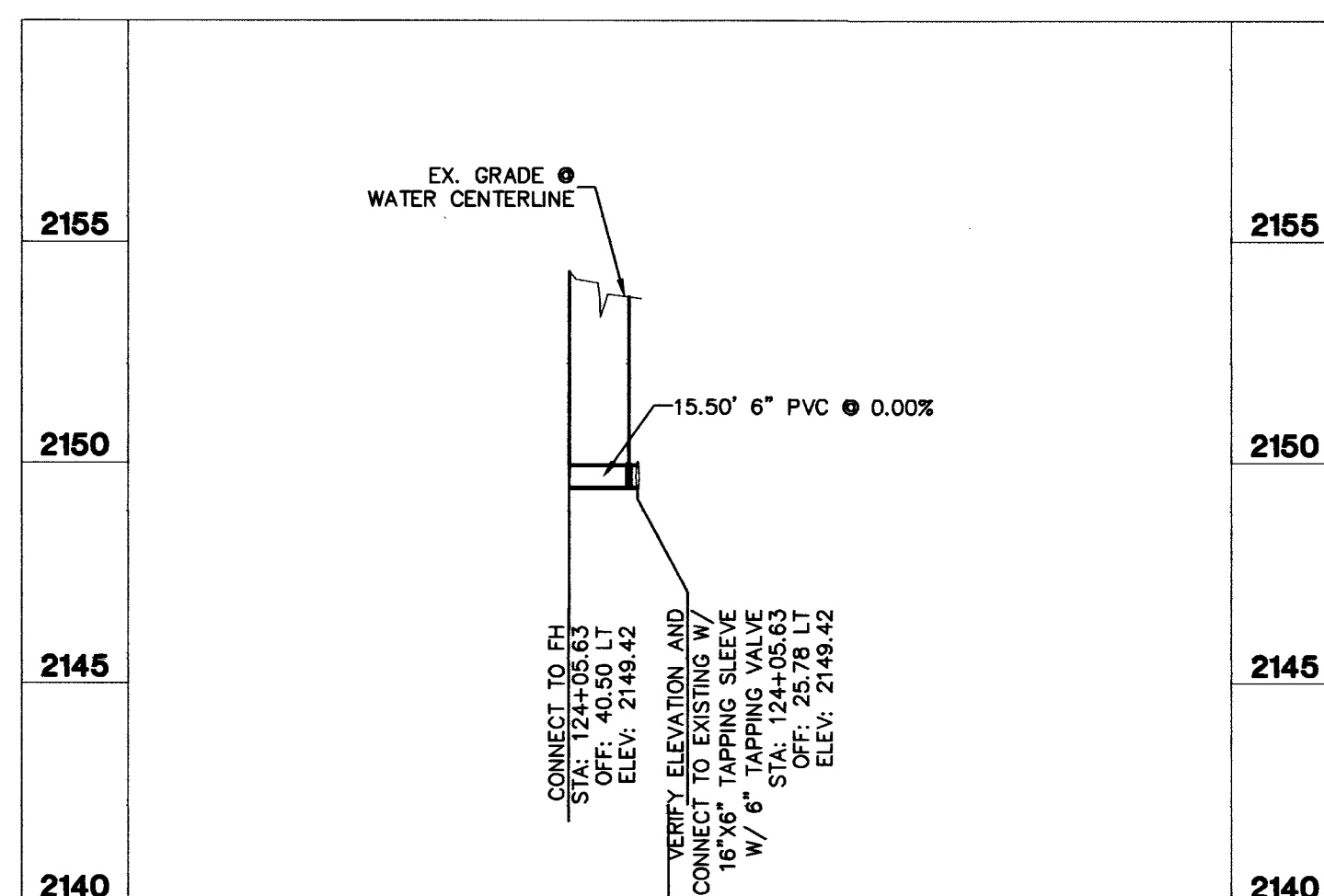
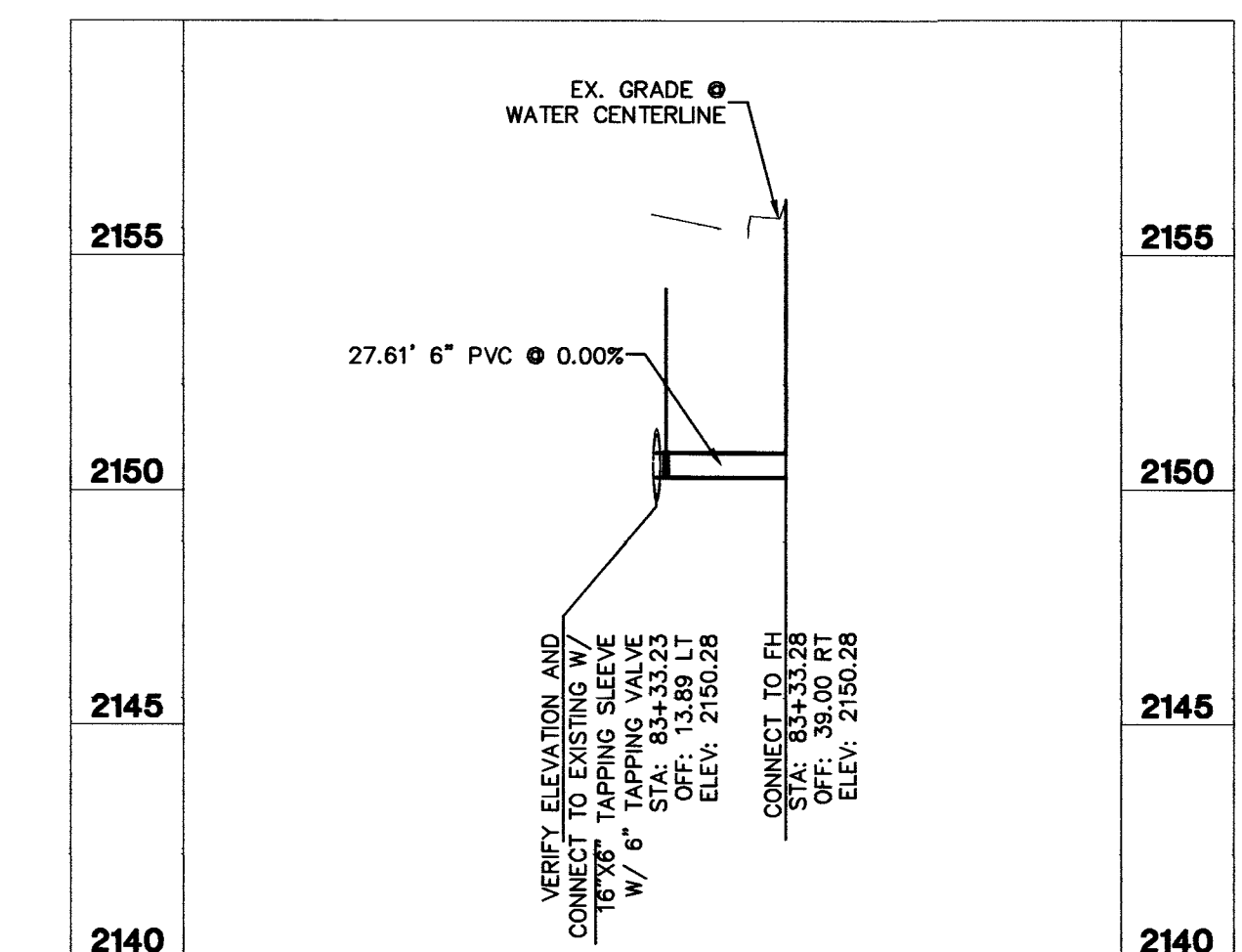
**3601 EL CONLON AVE**  
\*V\* STA 68+18.00



**2301 S. VALLEY VIEW**  
\*V\* STA 83+33.00



**1210 S. VALLEY VIEW**  
\*V\* STA 124+06.00



**NOTES:**

- CUTTING, REMOVAL, AND DISPOSAL OF ACP PIPE MUST BE IN ACCORDANCE WITH ALL LOCAL, STATE, AND FEDERAL REGULATIONS. APPROXIMATELY 630 LF OF ACP PIPE WILL BE REMOVED WITH THIS PROJECT.
- ALL EXISTING ASBESTOS CEMENT (ACP) WATERLINES CROSSING A TRENCH EXCAVATION GREATER THAN SIX (6) FEET WIDE SHALL BE REPLACED WITH PVC, UNLESS OTHERWISE STATED.
- THE DISTRICT CANNOT GUARANTEE A WATERTIGHT SHUTDOWN WHERE CONNECTIONS OR REPAIRS TO EXISTING FACILITIES ARE REQUIRED. THE CONTRACTOR SHALL ENSURE ALL LABOR AND EQUIPMENT IS AVAILABLE TO REMOVE FUGITIVE WATER THAT MAY IMPED E CONSTRUCTION AT ALL TIMES. COORDINATION WITH INSPECTION DIVISION MUST TAKE PLACE PRIOR TO ANY TRIAL SHUTDOWN. CONTRACTOR TO INSTALL TEMPORARY SERVICE TO ENSURE PROPER SHUTDOWN IN THE EVENT NO OTHER APPURTENANCES ARE AVAILABLE.
- FOR TRENCHES FOUR (4) FEET WIDE AND GREATER:  
CONTRACTOR MUST SUBMIT SHOP DRAWINGS TO LVVWD ENGINEERING SERVICES BEFORE CONSTRUCTION TO SHOW HOW WATERLINES SPANNING A TRENCH WILL SUPPORTED DURING EXCAVATION AND BACKFILL.  
SUPPORTED PIPE MAY BE EXPOSED FOR NO LONGER THAN 90 DAYS MAXIMUM, IF THE PIPE WILL BE EXPOSED FOR MORE THAN 90 DAYS, PIPE MUST BE RELOCATED PER APPROVED PLANS.  
IF THE PIPE MATERIAL IS ACP, REPLACE FROM COUPLING TO COUPLING WITH PVC, UNLESS OTHERWISE STATED.
- ANY INTERRUPTION OF SERVICE MUST BE PERFORMED IN ACCORDANCE WITH UDACS SECTION 3.14.01, AND APPROVED BY THE LVVWD INSPECTION DIVISION PRIOR TO SHUTDOWN. PROPER WRITTEN NOTIFICATION MUST BE GIVEN TO ALL AFFECTED CUSTOMERS.
- ALL SEWER/STORM DRAINS CROSSING WATERLINES MUST CONFORM TO SECTION 2.22 OF THE UNIFORM DESIGN AND CONSTRUCTION STANDARDS FOR PORTABLE WATER SYSTEM (UDACS) FOR WATER AND STORM MAIN CROSSINGS AND CLEARANCES.
- INSTALL WATERLINE IN STEEL CASING WHEN SHOWN PER UDACS PLATE NO.'S 21 AND 23. FROM THE UPPER BENDS THROUGHOUT THE LOWERED SECTION OF PIPE, DUCTILE IRON PIPE WITH RESTRAINED JOINT IS REQUIRED. IN ADDITION, THRUST BLOCKS ARE TO BE INSTALLED AT THE UPPER BENDS.
- ANNULAR SPACE BETWEEN PIPE AND CASING SHALL BE FILLED WITH CLASS I CLSM. SEE UDACS PLATE 17 FOR BEDDING AND BACKFILL REQUIREMENTS.
- FOR RELOCATIONS, REMOVE ALL WATERLINE PIPING BETWEEN POINTS OF CONNECTION OF THE RELOCATED SECTION.

**NOTE:**

UTILITY LOCATIONS AND ELEVATIONS SHOWN ARE BASED UPON BEST AVAILABLE INFORMATION. CONTRACTOR TO VERIFY HORIZONTAL AND VERTICAL LOCATIONS AND NOTIFY ENGINEER OF ANY DISCREPANCIES.

**SNWA CONSTRUCTION NOTE**

CONTRACTOR SHALL FIELD LOCATE AND PROTECT ALL SNWA/SNWS APPURTENANCES INCLUDING, BUT NOT LIMITED TO AV/AR, ACCESS MANWAYS AND CATHODIC PROTECTION SYSTEMS. ALL ABOVE GROUND STRUCTURES AND AT GRADE STRUCTURES MUST BE ADJUSTED TO NEW GRADE AT CONTRACTOR'S EXPENSE. CATHODIC PROTECTION TEST STATIONS, RECTIFIERS, AND AV/AR'S MUST BE RELOCATED TO THE SIDEWALK PER SNWA STANDARDS AND AT THE CONTRACTOR'S EXPENSE. CONTRACTOR TO NOTIFY SOUTHERN NEVADA WATER AUTHORITY DEVELOPMENT PLAN REVIEW AT 702-862-3444 AT LEAST 48 HOURS PRIOR TO CONSTRUCTION ACTIVITY.

**SNWA NOTE:**

- IF EXPOSED, CONTRACTOR TO PAY FOR AND REPLACE SNWA CATHODIC PROTECTION TEST STATION GROUND MATS, MAGNESIUM RIBBONS, OR ZINC RIBBONS WITH NEW GROUND MATS, MAGNESIUM RIBBONS, OR ZINC RIBBONS.
- RELOCATION OF EXISTING SNWA TEST STATIONS MUST BE DONE IN ACCORDANCE WITH SNWA STANDARD PLATES FOR CATHODIC PROTECTION.

**SNWA CAUTION:**

- SNWA TEST LEADS ARE SHALLOW
- SNWA FIBER OPTIC CONDUIT RUNS ALONG THE WEST SIDE OF THE SNWA PIPELINE-ALONG VALLEY VIEW BLVD AND ALONG THE NORTH SIDE OF THE SNWA PIPELINE ALONG OAKLEY BLVD

**CONSTRUCTION NOTES**

- INSTALL 6" DUCTILE IRON PIPE PER UDACS STD. PLATE 17
- INSTALL 6" AWWA C900 PVC PER UDACS STD. PLATE 17
- INSTALL 8" DUCTILE IRON PIPE PER UDACS STD. PLATE 17
- INSTALL 10" DUCTILE IRON PIPE PER UDACS STD. PLATE 17
- INSTALL 8" 45° BEND PER UDACS STD. PLATES 21 AND 23 (NO DIRECT PAYMENT)
- INSTALL 10" 45° BEND PER UDACS STD. PLATES 21 AND 23 (NO DIRECT PAYMENT)
- INSTALL 8" GATE VALVE PER UDACS STD. PLATES 30 AND 39 (NO DIRECT PAYMENT)
- INSTALL 10" GATE VALVE (PER UDACS STD. PLATES 30 AND 39 NO DIRECT PAYMENT)
- INSTALL 6" GATE VALVE PER UDACS STD. PLATES 30 AND 39 (NO DIRECT PAYMENT)
- INSTALL 10" 22.5 BEND (NO DIRECT PAYMENT) PER UDACS STD. PLATE 31
- INSTALL 10"x8" TEE PER UDACS STD. PLATE 31
- RELOCATE EX. FIRE HYDRANT PER UDACS STD. PLATE 40
- INSTALL FIRE HYDRANT PER UDACS STD. PLATE 40
- REMOVE EX 6" DIP AND FITTINGS (NO DIRECT PAYMENT)
- REMOVE 8" ACP AND FITTINGS (NO DIRECT PAYMENT)
- REMOVE 10" ACP AND FITTINGS (NO DIRECT PAYMENT)
- INSTALL 16" STEEL CASING PER UDACS STD. PLATE 23
- INSTALL 18" STEEL CASING PER UDACS STD. PLATE 23
- INSTALL 20" STEEL CASING PER UDACS STD. PLATE 23
- REINSTATE OR RELOCATE WATER SERVICE LATERAL PER SHEET UT-05 AND UT-06, AND DETAIL "G" ON UT-13
- INSTALL 10" x 8" REDUCER PER UDACS STD. PLATE 30

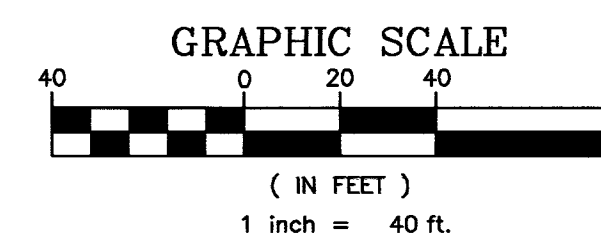
**APPROVED FOR CONSTRUCTION**

1ST APPROVAL DATE 11-02-11  
  
 LVVWD ENGINEERING SERVICES MANAGER DATE 8-2-12  
 PROJECT NO. 116494

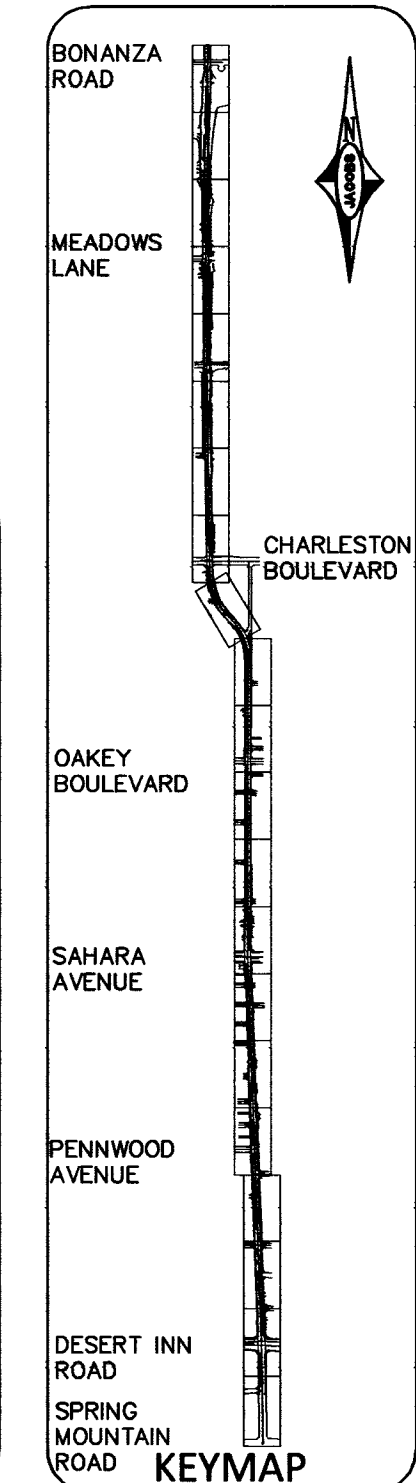
**APPROVED FOR CONSTRUCTION**

1ST APPROVAL DATE 11-03-11  
  
 SOUTHERN NEVADA WATER AUTHORITY DATE 8/11/12

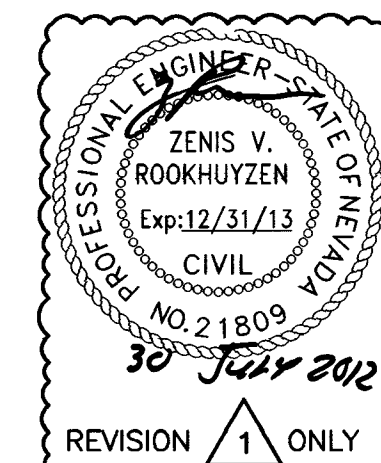
SNWA APPROVAL IS VALID FOR ONE (1) YEAR FROM THE SIGNATURE DATE. IF CONSTRUCTION WITHIN THE EASEMENT OR RESTRICTED PIPE SAFETY ZONE IS NOT COMPLETE, PLANS MUST BE RESUBMITTED TO SNWA FOR APPROVAL.



PROFILE SCALE  
 HORIZONTAL: 1"=40'  
 VERTICAL: 1"=4'



**FAST**  
 Call before you dig  
 Under Ground.  
 1-702-432-5300  
 AVOID HITTING UNDEGROUND PIPES, CABLES, ETC. SAVE COSTS!  
 CALL BEFORE YOU DIG OVERHEAD  
 1-702-227-2929  
 Call before you Dig  
 811  
 1-800-227-2800



**REVISIONS**

NO.	DATE	SHEET	DESCRIPTION	APP'D
1	7/30/12		RETE AT TURN @ EL CONLON	

**DEPARTMENT OF PUBLIC WORKS**  
**CAPITAL PROJECT MANAGEMENT**  
 CITY ENGINEER: DAVID BOWERS, PE, PTOE  
 PROGRAM MANAGER: JEREMY LEAVITT, PE  
 DESIGNED BY: N. WORKER  
 DRAWN BY: J. SIMIANO  
 CHECKED BY: D. TULLOCH  
 DATE: 08/12/2011  
 VALLEY VIEW BLVD - DESERT INN RD TO BONANZA RD

**VALLEY VIEW BOULEVARD**  
**DESERT INN RD TO BONANZA RD**  
**WATER RELOCATIONS**

TITLE: SHEET:  
**UT-20**  
 120 of 236  
 DRAWING NO. 107-V5627

PROFESSIONAL ENGINEER - STATE OF NEVADA  
 NATHAN A. WORKER  
 Exp: 06/30/12  
 CIVIL  
 No. 20860  
 VALLEY VIEW, NV