

- ### CONSTRUCTION NOTES
- INSTALL 6" DUCTILE IRON PIPE PER UDACS STD. PLATE 17
 - INSTALL 6" AWWA C900 PVC PER UDACS STD. PLATE 17
 - INSTALL 8" DUCTILE IRON PIPE PER UDACS STD. PLATE 17
 - INSTALL 10" DUCTILE IRON PIPE PER UDACS STD. PLATE 17
 - INSTALL 8" 45° BEND PER UDACS STD. PLATES 21 AND 23 (NO DIRECT PAYMENT)
 - INSTALL 10" 45° BEND PER UDACS STD. PLATES 21 AND 23 (NO DIRECT PAYMENT)
 - INSTALL 8" GATE VALVE PER UDACS STD. PLATES 30 AND 39 (NO DIRECT PAYMENT)
 - INSTALL 10" GATE VALVE (PER UDACS STD. PLATES 30 AND 39 NO DIRECT PAYMENT)
 - INSTALL 6" GATE VALVE PER UDACS STD. PLATES 30 AND 39 (NO DIRECT PAYMENT)
 - INSTALL 10" 22.5° BEND (NO DIRECT PAYMENT) PER UDACS STD. PLATE 31
 - INSTALL 10"x8" TEE PER UDACS STD. PLATE 31
 - RELOCATE EX. FIRE HYDRANT PER UDACS STD. PLATE 40
 - INSTALL FIRE HYDRANT PER UDACS STD. PLATE 40
 - REMOVE EX 6" DIP AND FITTINGS (NO DIRECT PAYMENT)
 - REMOVE 8" ACP AND FITTINGS (NO DIRECT PAYMENT)
 - REMOVE 10" ACP AND FITTINGS (NO DIRECT PAYMENT)
 - INSTALL 16" STEEL CASING PER UDACS STD. PLATE 23
 - INSTALL 18" STEEL CASING PER UDACS STD. PLATE 23
 - INSTALL 20" STEEL CASING PER UDACS STD. PLATE 23
 - REINSTATE OR RELOCATE WATER SERVICE LATERAL PER SHEET UT-05 AND UT-06, AND DETAIL "G" ON UT-13
 - INSTALL 10" x 8" REDUCER PER UDACS STD. PLATE 30

POTHOLES

POT HOLE	UTILITY	LOCATION	ELEVATION	POT HOLE	UTILITY	LOCATION	ELEVATION
33	2" GAS	TOP	2151.91	44	6" (8") ACP WATER	TOP	2150.48
34	12" (10") SEWER	INVERT	2145.59	45	16" ACP WATER	TOP	2149.64
35	2" GAS	TOP	2150.92	46	84" RCP WATER	TOP	2146.82
36	2" GAS	TOP	2150.35	47	10" ACP WATER	TOP	2150.02
37	12" (10") SEWER	INVERT	2144.00	48	16" ACP WATER	TOP	2149.02
38	16" ACP WATER	TOP	2150.03	49	84" RCP WATER	TOP	2145.86
39	84" RCP WATER	TOP	2146.93	50	10" ACP WATER	TOP	2149.53
40	10" ACP WATER	TOP	2150.57	51	8" ACP WATER	TOP	2148.96

VALLEY VIEW BLVD
"V" STA 92+00.00 TO STA 99+00.00

WATERLINE RELOCATION NOTE

INSTALL 10" DIP A MINIMUM OF 10' EACH SIDE OF TRENCH WALL W/ FLEX OR SLEEVE TYPE COUPLING WHERE THE PROPOSED DIP WATERLINE TRANSITIONS FROM THE EXISTING ACP WATERLINE.

- ### NOTES:
- CUTTING, REMOVAL, AND DISPOSAL OF ACP PIPE MUST BE IN ACCORDANCE WITH ALL LOCAL, STATE, AND FEDERAL REGULATIONS. APPROXIMATELY 630 LF OF ACP PIPE WILL BE REMOVED WITH THIS PROJECT.
 - ALL EXISTING ASBESTOS CEMENT (ACP) WATERLINES CROSSING A TRENCH EXCAVATION GREATER THAN SIX (6) FEET WIDE SHALL BE REPLACED WITH PVC, UNLESS OTHERWISE STATED.
 - THE DISTRICT CANNOT GUARANTEE A WATERTIGHT SHUTDOWN WHERE CONNECTIONS OR REPAIRS TO EXISTING FACILITIES ARE REQUIRED. THE CONTRACTOR SHALL ENSURE ALL LABOR AND EQUIPMENT IS AVAILABLE TO REMOVE FUGITIVE WATER THAT MAY IMPEDE CONSTRUCTION AT ALL TIMES. COORDINATION WITH INSPECTION DIVISION MUST TAKE PLACE PRIOR TO ANY TRIAL SHUTDOWN. CONTRACTOR TO INSTALL TEMPORARY SERVICE TO ENSURE PROPER SHUTDOWN IN THE EVENT NO OTHER APPURTENANCES ARE AVAILABLE.
 - FOR TRENCHES FOUR (4) FEET WIDE AND GREATER:
CONTRACTOR MUST SUBMIT SHOP DRAWINGS TO LVVWD ENGINEERING SERVICES BEFORE CONSTRUCTION TO SHOW HOW WATERLINES SPANNING A TRENCH WILL SUPPORTED DURING EXCAVATION AND BACKFILL.
SUPPORTED PIPE MAY BE EXPOSED FOR NO LONGER THAN 90 DAYS MAXIMUM, IF THE PIPE WILL BE EXPOSED FOR MORE THAN 90 DAYS, PIPE MUST BE RELOCATED PER APPROVED PLANS.
IF THE PIPE MATERIAL IS ACP, REPLACE FROM COUPLING TO COUPLING WITH PVC, UNLESS OTHERWISE STATED.
 - ANY INTERRUPTION OF SERVICE MUST BE PERFORMED IN ACCORDANCE WITH UDACS SECTION 3.14.01, AND APPROVED BY THE LVVWD INSPECTION DIVISION PRIOR TO SHUTDOWN. PROPER WRITTEN NOTIFICATION MUST BE GIVEN TO ALL AFFECTED CUSTOMERS.
 - ALL SEWER/STORM DRAINS CROSSING WATERLINES MUST CONFORM TO SECTION 2.22 OF THE UNIFORM DESIGN AND CONSTRUCTION STANDARDS FOR PORTABLE WATER SYSTEM (UDACS) FOR WATER AND STORM MAIN CROSSINGS AND CLEARANCES.
 - INSTALL WATERLINE IN STEEL CASING WHEN SHOWN PER UDACS PLATE NO.'S 21 AND 23. FROM THE UPPER BENDS THROUGHOUT THE LOWERED SECTION OF PIPE, DUCTILE IRON PIPE WITH RESTRAINED JOINTS IS REQUIRED. IN ADDITION, THRUST BLOCKS ARE TO BE INSTALLED AT THE UPPER BENDS.
 - ANNUAL SPACE BETWEEN PIPE AND CASING SHALL BE FILLED WITH CLASS I CLSM. SEE UDACS PLATE 17 FOR BEDDING AND BACKFILL REQUIREMENTS.
 - FOR RELOCATIONS, REMOVE ALL WATERLINE PIPING BETWEEN POINTS OF CONNECTION OF THE RELOCATED SECTION.

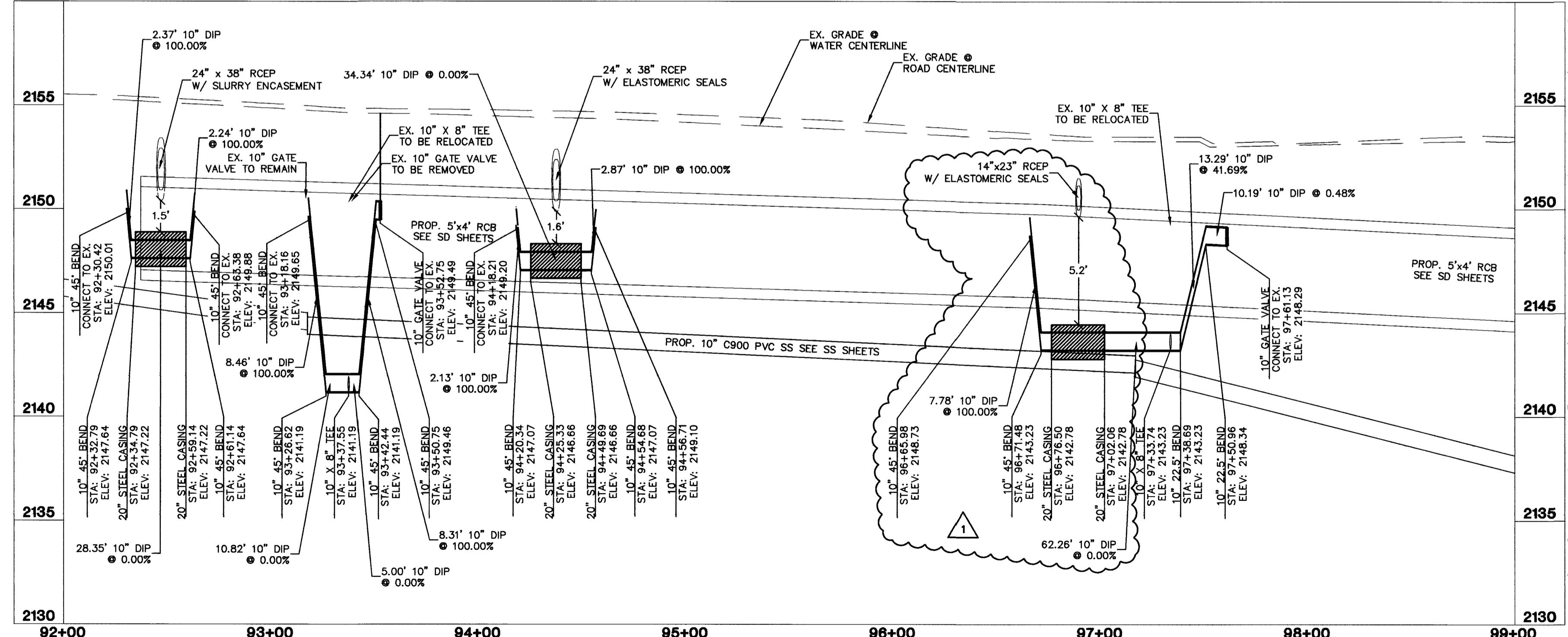
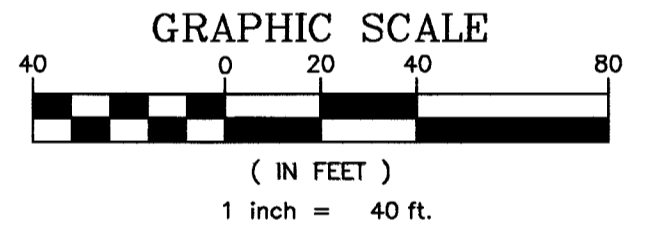
APPROVED FOR CONSTRUCTION
1ST APPROVAL DATE 11-02-11

[Signature]
LVVWD ENGINEERING SERVICES MANAGER
PROJECT NO. 116494

APPROVED FOR CONSTRUCTION
1ST APPROVAL DATE 11-03-11

[Signature]
SOUTHERN NEVADA WATER AUTHORITY

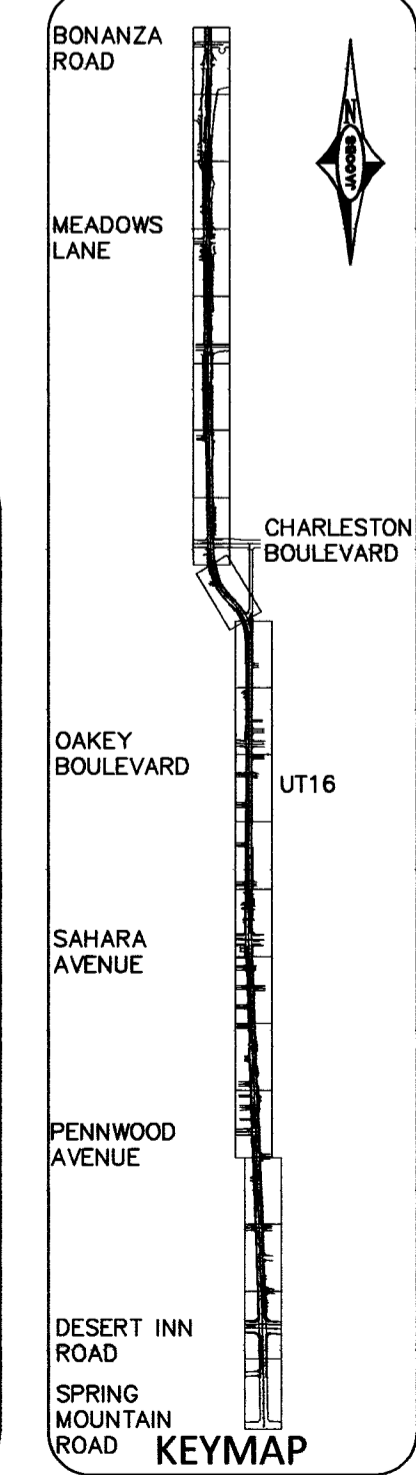
SNWA APPROVAL IS VALID FOR ONE (1) YEAR FROM THE SIGNATURE DATE. IF CONSTRUCTION WITHIN THE EASEMENT OR RESTRICTED PIPE SAFETY ZONE IS NOT COMPLETE, PLANS MUST BE RESUBMITTED TO SNWA FOR APPROVAL.



FAST
Call before you Dig
Under Ground.
1-702-432-5300

CALL BEFORE YOU DIG OVERHEAD
1-702-227-2929

Call before you Dig
1-800-227-2800



REVISIONS

NO.	DATE	SHEET	DESCRIPTION	APP'D
1	07/09/12	1	STANDARD WORKER W. FITTINGS CHANGE	

VALLEY VIEW BLVD - DESERT INN RD TO BONANZA RD

DEPARTMENT OF PUBLIC WORKS
CAPITAL PROJECT MANAGEMENT

CITY ENGINEER: DAVID BOWERS, PE, PTOE
PROGRAM MANAGER: JEREMY LEAVITT, PE
DESIGNED BY: N. WORKER
DRAWN BY: J. SMIANO
CHECKED BY: D. TULLOCH
DATE: 08/12/2011

VALLEY VIEW BOULEVARD
DESERT INN RD TO BONANZA RD
WATER RELOCATIONS

TITLE: SHEET:
UT-16
116 of 236
DRAWING NO. 107-V5627

PROFESSIONAL ENGINEER - STATE OF NEVADA
NATHAN WORKER
Exp: 06/30/12
CIVIL
NO. 20866

MANSON NO. 36860 BLD NO. 11173005