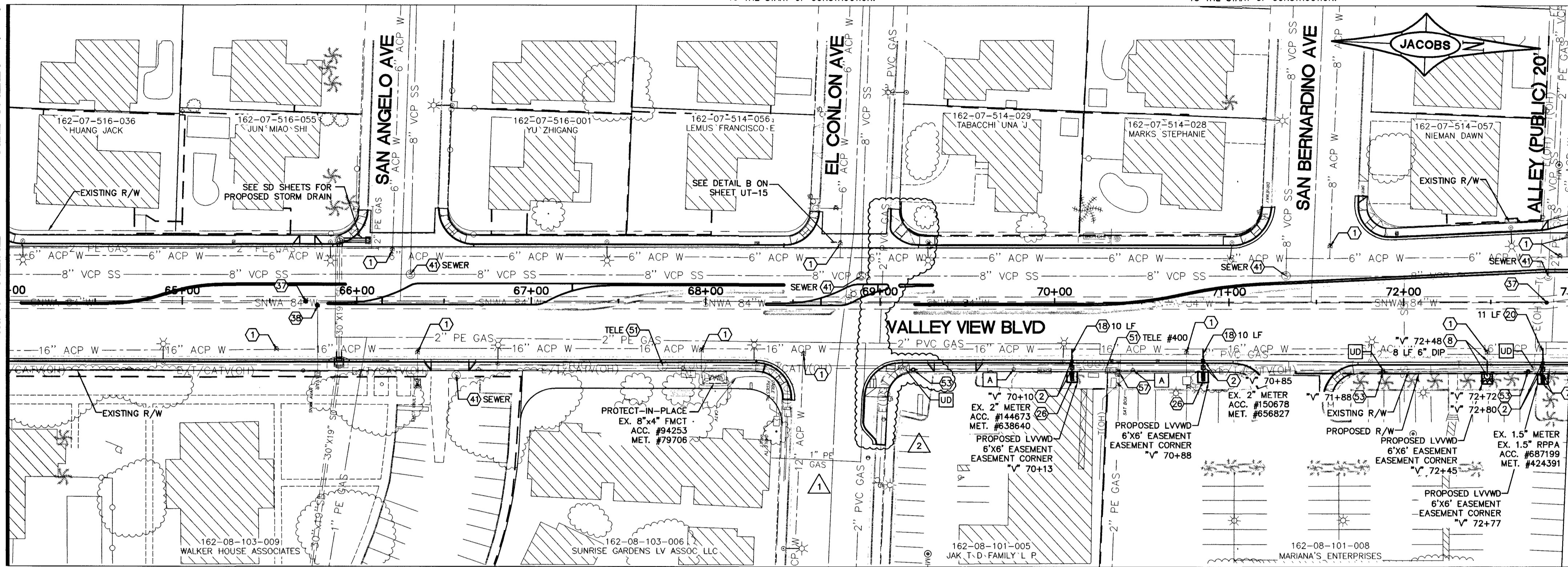


SEE SHEET UT-03

MATCHLINE

V 64+00



SEE BELOW

MATCHLINE

V 73+00

**REDUCED PRESSURE PRINCIPLE ASSEMBLY (RPPA) (1) 1"**  
 THE REDUCED PRESSURE PRINCIPLE ASSEMBLY SHALL BE INSTALLED IN ACCORDANCE WITH THE UDACS PLATE NO. 56. NO WATER SHALL BE TAKEN FROM A SERVICE REQUIRING BACKFLOW PREVENTION UNTIL THE REDUCED PRESSURE PRINCIPLE ASSEMBLY HAS BEEN SUCCESSFULLY TESTED BY THE LVWD. ANY BLOCK WALL OR OTHER FENCE MATERIAL SHALL BE DESIGNED AND CONSTRUCTED AROUND THE OUTSIDE OF THE EASEMENT(S) TO ALLOW THE DISTRICT DIRECT ACCESS FROM THE ADJACENT RIGHT-OF-WAY. EASEMENTS SHALL BE CLEARLY MARKED OR STAKED PRIOR TO THE START OF CONSTRUCTION.

**REDUCED PRESSURE PRINCIPLE ASSEMBLY (RPPA) (2) 1"**  
 THE REDUCED PRESSURE PRINCIPLE ASSEMBLY SHALL BE INSTALLED IN ACCORDANCE WITH THE UDACS PLATE NO. 8. NO WATER SHALL BE TAKEN FROM A SERVICE REQUIRING BACKFLOW PREVENTION UNTIL THE REDUCED PRESSURE PRINCIPLE ASSEMBLY HAS BEEN SUCCESSFULLY TESTED BY THE LVWD. ANY BLOCK WALL OR OTHER FENCE MATERIAL SHALL BE DESIGNED AND CONSTRUCTED AROUND THE OUTSIDE OF THE EASEMENT(S) TO ALLOW THE DISTRICT DIRECT ACCESS FROM THE ADJACENT RIGHT-OF-WAY. EASEMENTS SHALL BE CLEARLY MARKED OR STAKED PRIOR TO THE START OF CONSTRUCTION.

**REMOVAL NOTES**

- 1A PROTECT IN PLACE
- 1B ABANDON LVWD SERVICE LATERAL. SEE ABANDONMENT NOTE 1 ON SHEET G-05.
- 1C ABANDON LVWD SERVICE LATERAL. SEE ABANDONMENT NOTE 2 ON SHEET G-05.
- 1D REMOVE JOINT USE UTILITY POLE AND GUY (IF EXISTING) (BY OTHERS)
- 1E REMOVE REGULATOR STATION & VAULT (BY SWG) PER SWG WR#1297822
- 1G ABANDON VAULT PER DETAIL E ON UT-14 (NO DIRECT PAYMENT)

**UTILITY NOTES**

- 1 VERTICALLY ADJUST LVWD VALVE BOX TO FINISHED GRADE PER UDACS PLATE NO. 39. VALVE SHALL BE ACCESSIBLE AT ALL TIMES
- 2 RELOCATE LVWD METER PER UDACS PLATE 4
- 3 VERTICALLY ADJUST LVWD METER BOX TO FINISHED GRADE
- 4 RELOCATE LVWD RPPA PER UDACS PLATE 8
- 5 RELOCATE FIRE HYDRANT PER UDACS PLATE 40 (CONDITION C OR G)
- 6 REPLACE LVWD 8"x4" FMCT PER UDACS PLATE 53
- 7 INSTALL 10" RPPA PER UDACS PLATE 56
- 8 INSTALL 1" SERVICE SADDLE, 1" CORP. STOP, AND 1" TYPE K COPPER SERVICE LATERAL PER UDACS PLATE 4
- 9 INSTALL 2" SERVICE SADDLE, 2" CORP. STOP, AND 2" TYPE K COPPER SERVICE LATERAL PER UDACS PLATE 4
- 10 INSTALL 1" TYPE K COPPER SERVICE LATERAL PER UDACS PLATE 4
- 11 INSTALL 1.5" TYPE K COPPER SERVICE LATERAL PER UDACS PLATE 4
- 12 INSTALL 2" TYPE K COPPER SERVICE LATERAL PER UDACS PLATE 4
- 13 INSTALL 1" RPPA PER UDACS PLATE 8
- 14 INSTALL 2" RPPA PER UDACS PLATE 8
- 15 INSTALL BOLLARDS PER UDACS PLATE 75, PLACEMENT AS SHOWN ON PLANS
- 16 VERTICALLY ADJUST SNWA MONUMENT TO FINISHED GRADE
- 17 VERTICALLY ADJUST SNWA MONUMENT PER USD 239
- 18 VERTICALLY ADJUST SNWA VALVE BOX TO FINISHED GRADE
- 19 VERTICALLY ADJUST SNWA BLOWOFF VALVE TO FINISHED GRADE
- 20 VERTICALLY ADJUST MANHOLE TO FINISHED GRADE PER APPROPRIATE AGENCY
- 21 RELOCATE IRRIGATION VALVE AND SYSTEM
- 22 INSTALL 10" GATE VALVE
- 23 TW TELECOM TO RELOCATE FIBER OPTIC VAULT
- 24 CENTURYLINK/COX TO RELOCATE AND/OR ADJUST FACILITIES TO FINISHED GRADE (CONTRACTOR TO COORDINATE)
- 25 RELOCATE AND/OR ADJUST FACILITIES TO FINISHED GRADE (BY OTHERS)
- 26 INSTALL JOINT USE UTILITY POLE (BY OTHERS)
- 27 JOINT USE UTILITY POLE TO SATISFY USD 404.416A (BY OTHERS)
- 28 ADJUST GAS VALVE COVER TO FINISHED GRADE (BY OTHERS)
- 29 SWG TO INSTALL REGULATOR STATION

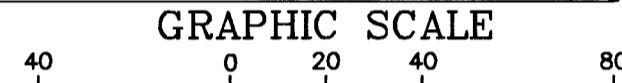
**SNWA NOTES**

ALL REPAIRS, REPLACEMENTS, RELOCATIONS AND/OR EXTENSIONS MUST BE DESIGNED AND MONITORED BY A NACE INTERNATIONAL-CERTIFIED CATHODIC PROTECTION SPECIALIST. ALL TESTING AND WORK IS TO BE DONE BY A NACE LEVEL II CATHODIC PROTECTION TECHNICIAN AND APPROVED BY THE SNWA CATHODIC PROTECTION TECHNICIAN PRIOR TO ACCEPTING THE INSTALLATION. ALL MATERIAL FOR THE INSTALLATION IS TO BE PROVIDED BY THE CONTRACTOR. CONTRACTOR SHALL SUBMIT ALL CERTIFICATIONS AND MATERIALS TO BE USED ON THE PROJECT FOR REVIEW AND ACCEPTANCE BY SNWA PRIOR TO STARTING ANY WORK.

SNWA FIBER OPTIC CONDUIT RUNS ALONG THE WEST SIDE OF THE SNWA PIPELINE.  
 CAUTION: SNWA TEST LEADS ARE SHALLOW.  
 RELOCATION OF EXISTING SNWA TEST STATIONS MUST BE DONE IN ACCORDANCE WITH SNWA STANDARD PLATES FOR CATHODIC PROTECTION.  
 IF EXPOSED, CONTRACTOR TO PAY FOR AND REPLACE SNWA CATHODIC PROTECTION TEST STATION GROUND MATS, MAGNESIUM RIBBONS, OR ZINC RIBBONS WITH NEW GROUND MATS, MAGNESIUM RIBBONS, OR ZINC RIBBONS.

CONTRACTOR SHALL FIELD LOCATE AND PROTECT ALL SNWA/SNWS APPURTENANCES INCLUDING, BUT NOT LIMITED TO AV/AR, ACCESS MAINWAYS AND CATHODIC PROTECTION SYSTEMS. ALL ABOVE GROUND STRUCTURES AND AT GRADE STRUCTURES MUST BE ADJUSTED TO NEW GRADE AT CONTRACTOR'S EXPENSE. CATHODIC PROTECTION TEST STATIONS, RECTIFIERS, AND AV/AR'S MUST BE RELOCATED TO THE SIDEWALK PER SNWA STANDARDS AND AT THE CONTRACTOR'S EXPENSE. CONTRACTOR TO NOTIFY SNWA DEVELOPMENT PLAN REVIEW AT (702) 862-3444 AT LEAST 48 HOURS PRIOR TO CONSTRUCTION ACTIVITY.

SNWA INSPECTOR WILL BE NOTIFIED AT LEAST 48 HRS PRIOR TO ANY WORK NEAR OR RELOCATION OR ADJUSTMENT OF ANY SNWA FACILITY.



**APPROVED FOR CONSTRUCTION**  
 1ST APPROVAL 11/02/11  
 LVWD ENGINEERING SERVICES MANAGER  
 PROJECT NO. 116494

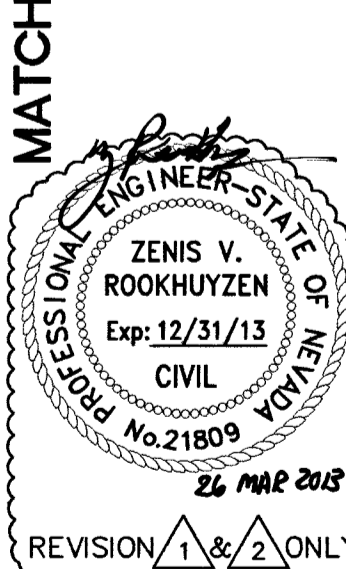
**APPROVED FOR CONSTRUCTION**  
 CITY OF LAS VEGAS FIRE DEPARTMENT  
 DATE

**APPROVED FOR CONSTRUCTION**  
 SOUTHERN NEVADA WATER AUTHORITY  
 DATE

SNWA APPROVAL IS VALID FOR ONE (1) YEAR FROM THE SIGNATURE DATE. IF CONSTRUCTION WITHIN THE EASEMENT OR RESTRICTED PIPE SAFETY ZONE IS NOT COMPLETE, PLANS MUST BE RESUBMITTED TO SNWA FOR APPROVAL.

**NOTE:**

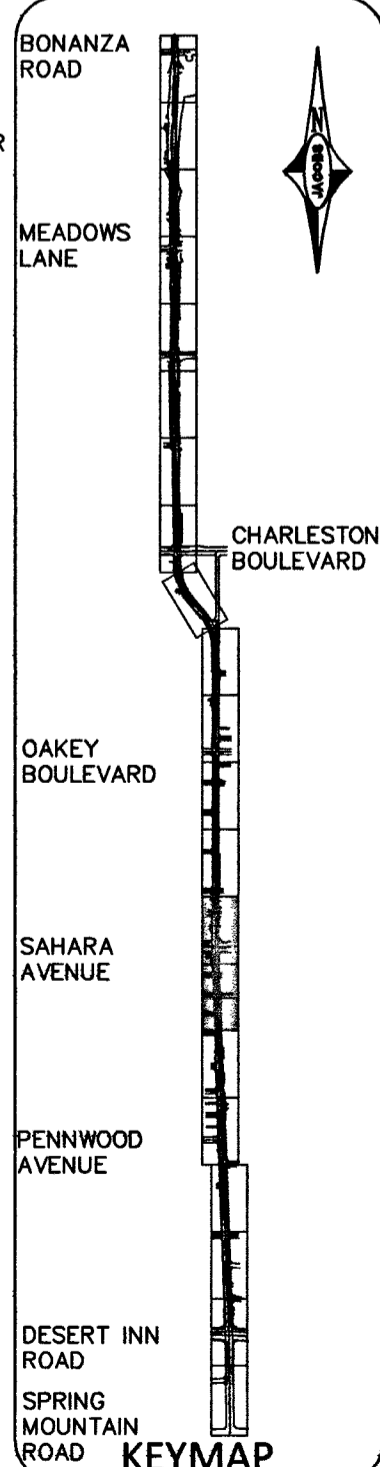
- 1. SEE IR-SHEETS FOR PUBLIC MEDIAN IRRIGATION
- 2. SEE SS-SHEETS FOR PROPOSED SANITARY SEWER
- 3. SEE SD-SHEETS FOR STORM DRAIN
- 4. SEE IS-SHEETS FOR TRAFFIC SIGNALS
- 5. SEE L-SHEETS FOR LIGHTING & ITS
- 6. ON-SITE WATER RESTORATION WILL BE THE RESPONSIBILITY OF THE CONTRACTOR
- 7. ALL SEWER ON PLANS ARE CLV JURISDICTION UNLESS OTHERWISE NOTED.
- 8. SEE LS-SHEETS FOR BOULDER PLACEMENT



**FAST**  
 Call before you dig  
 UnderGround.  
 1-702-432-5300

**Call before you dig**  
 1-702-227-2929

**Call 811**  
 1-800-227-2600



**REVISIONS**

NO.	DATE	SHEET	DESCRIPTION	APP'D
1	7/9/12	1	DELETE RT TURN @ EL CONLON	
2	5/4/12	2	ADD EL CONLON CROSSING	

**DEPARTMENT OF PUBLIC WORKS**  
**CAPITAL PROJECT MANAGEMENT**  
 CITY ENGINEER: DAVID BOWERS, PE, P/DOE  
 PROGRAM MANAGER: JEREMY LEAVITT, PE  
 DESIGNED BY: Z. ROOKHUYZEN  
 DRAWN BY: J. SIMIANO  
 CHECKED BY: J. JENSEN  
 DATE: 08/12/2011

**VALLEY VIEW BOULEVARD**  
**DESERT INN RD TO BONANZA RD**  
**UTILITY PLAN**  
 V 64+00 TO V 82+00

SHEET: **UT-04**  
 104 OF 236  
 DRAWING NO. 107-V5627

VALLEY VIEW BLVD - DESERT INN RD TO BONANZA RD