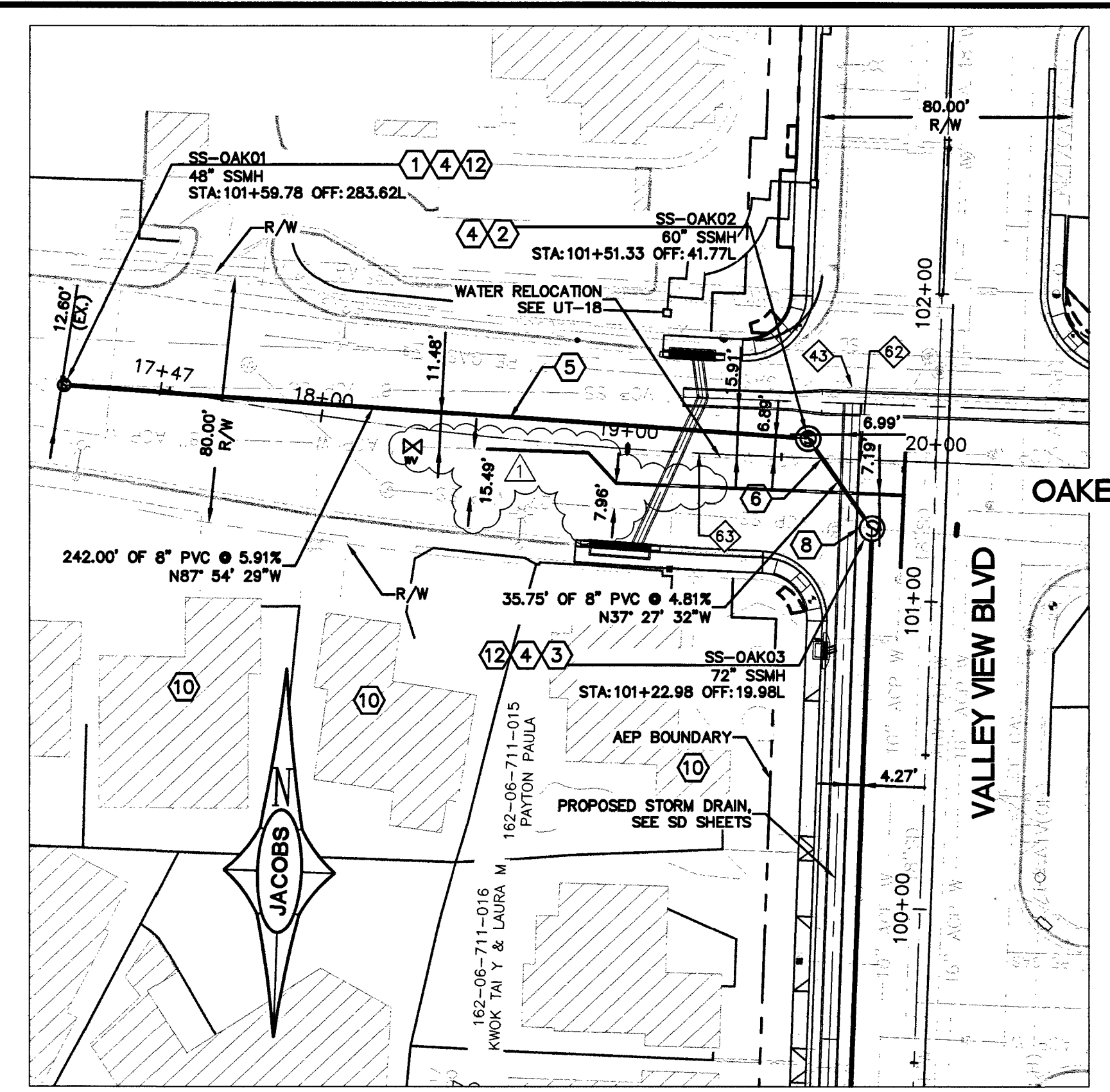


VALLEY VIEW BLVD



OAKLEY BLVD

POT HOLE	UTILITY	LOCATION	ELEVATION
1	16" WATER	TOP	2148.30
2	10" WATER	TOP	2147.25
3	84" WATER	TOP	2143.25
4	2" GAS	TOP	2149.54
5	2" GAS	TOP	2148.50
6	2" GAS	TOP	2149.92
7	6" (8") ACP WATER	TOP	2147.11
8	6" (8") ACP WATER	TOP	2147.95

- ### CONSTRUCTION NOTES
- INSTALL 48-INCH MANHOLE, FRAME, COVER AND COLLAR PER DCSWCS STANDARD DRAWINGS SD-1A, SD-2, AND SD-4.
 - INSTALL 60-INCH MANHOLE, FRAME, COVER AND COLLAR PER DCSWCS STANDARD DRAWINGS SD-1A, SD-2, AND SD-4.
 - INSTALL 72-INCH MANHOLE, WITH CAST IN PLACE BASE FRAME, COVER AND COLLAR PER DCSWCS STANDARD DRAWINGS SD-1A, SD-2, AND SD-4, SD-7 AND DETAIL 4, SHEET SS-05.
 - INSTALL CORROSION PROTECTION IN MANHOLE PER DCSWCS CORROSION PROTECTION STANDARDS (NO DIRECT PAYMENT).
 - INSTALL 8-INCH PVC SANITARY SEWER PIPE PER DCSWCS STANDARD DRAWING SD-18 AND DETAIL 1, SHEET SS-05.
 - INSTALL 8-INCH AWWA C-900 DR 25 PVC SANITARY SEWER PIPE PER DCSWCS STANDARD DRAWING SD-18 AND DETAIL 1, SHEET SS-05.
 - NOT USED
 - ROTATE CONE AND INSTALL CLSM BETWEEN MANHOLE AND PROPOSED STORM DRAIN PER DETAIL 3 ON SS-05 (NO DIRECT PAYMENT)
 - INSTALL 10-INCH AWWA C-900 DR 25 PVC SANITARY SEWER PIPE PER DCSWCS STANDARD DRAWING SD-18 AND DETAIL 1, SHEET SS-05.
 - REINSTATE PROPERTY SANITARY SEWER LATERAL PER DCSWCS STANDARD DRAWING SD-23, AND SD-27, AND DETAIL 5 ON SS-05 (NO DIRECT PAYMENT).
 - INSTALL CONCRETE UTILITY CROSSING PROTECTION EXTENDING 10 FEET BOTH SIDES OF CROSSED UTILITY PER DCSWCS STANDARD DRAWING SD-21 (NO DIRECT PAYMENT).
 - CONNECT TO EXISTING SANITARY SEWER.

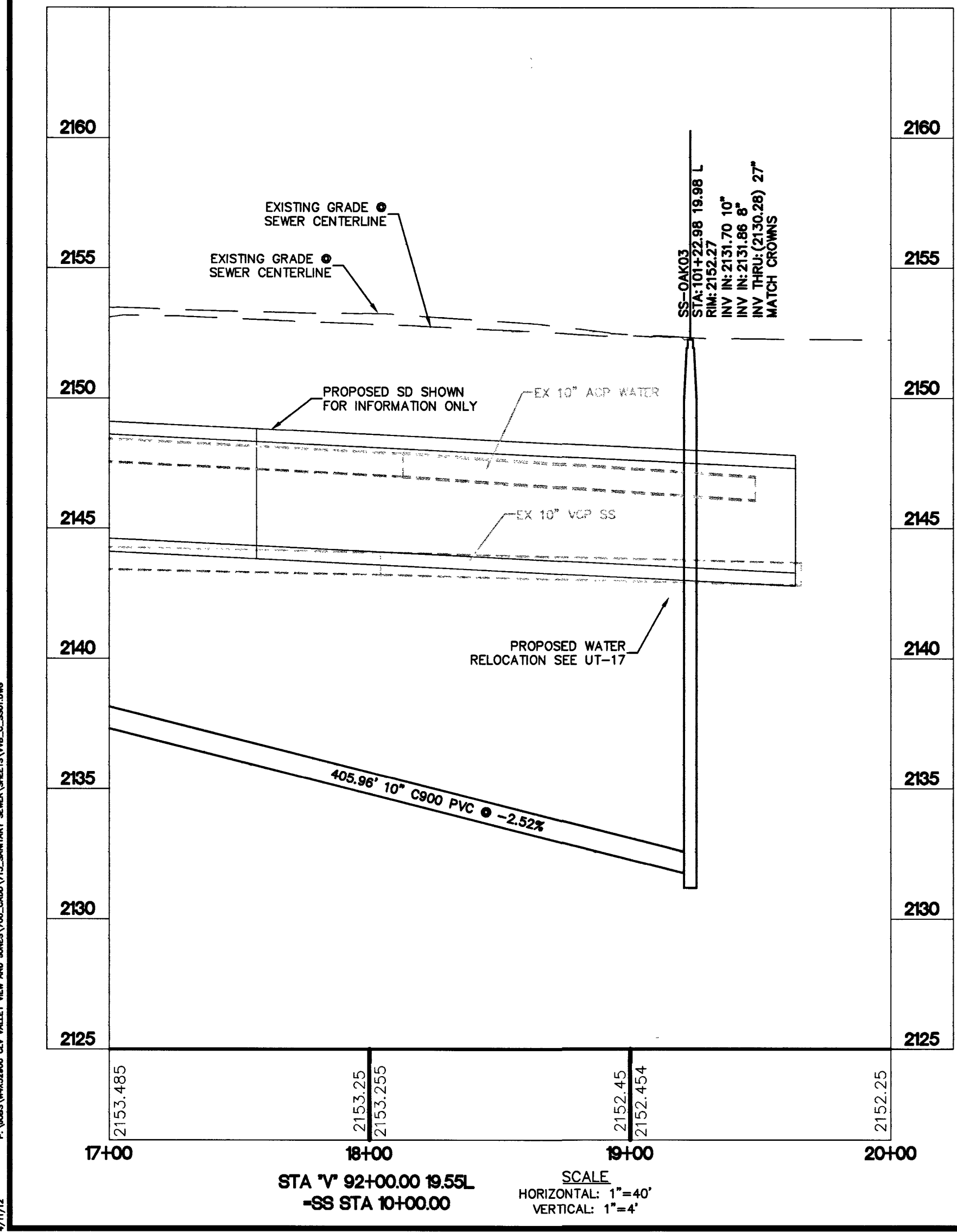
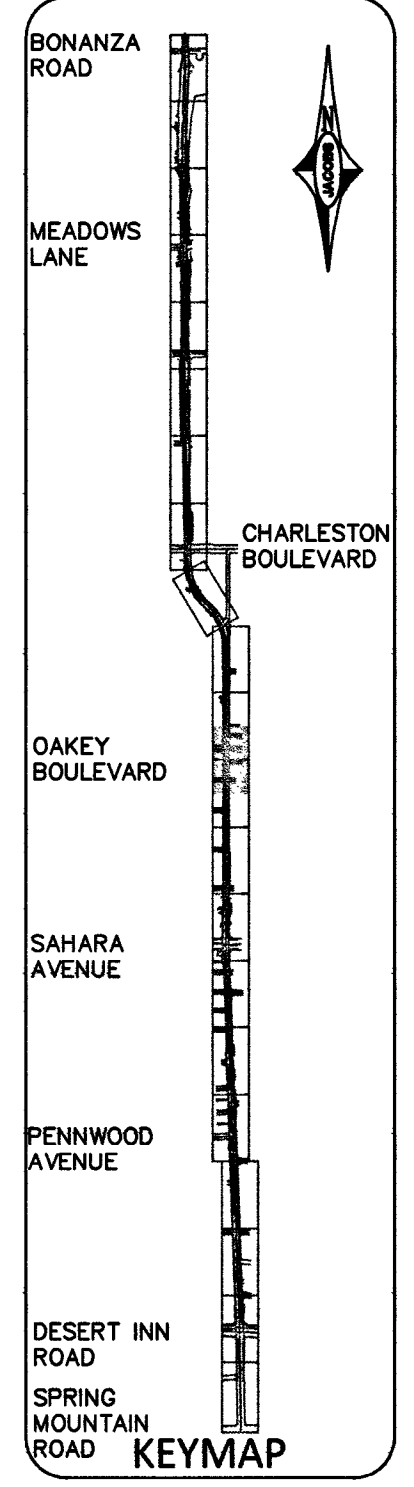
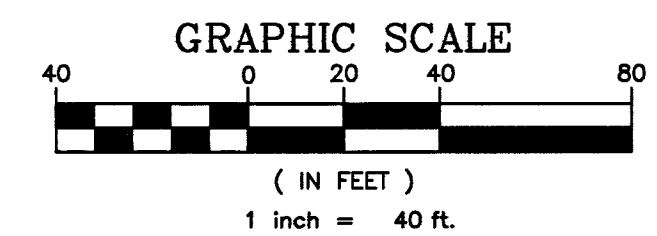
APPROVED FOR CONSTRUCTION
Nathan A. Jensen 04/16/12
 LWWD ENGINEERING SERVICES MANAGER DATE
 PROJECT NO. 116494

- ### GENERAL NOTES
- EXISTING UTILITIES SHOWN ARE BASED UPON THE BEST AVAILABLE INFORMATION. CONTRACTOR SHALL CONTACT CALL BEFORE YOU DIG AT 811 AT LEAST 3 DAYS PRIOR TO EXCAVATION FOR UTILITY LOCATIONS. CONTRACTOR SHALL NOTIFY THE ENGINEER OF ANY DISCREPANCIES OR UNMARKED UNDERGROUND UTILITIES IMMEDIATELY. ANY UTILITIES DAMAGED DURING CONSTRUCTION OF FACILITIES SHALL BE REPAIRED AT CONTRACTORS EXPENSE TO THE SATISFACTION OF THE OWNING AGENCY AND PERMITTING AGENCY.
 - CONTRACTOR IS RESPONSIBLE FOR BYPASS PUMPING IN ACCORDANCE WITH THE SECTION 695 OF PROJECT SPECIAL PROVISIONS TO ENSURE NO DISRUPTION IN SERVICE OCCURS ALONG THE SEWER RELOCATION PROJECT CORRIDOR. (NO DIRECT PAYMENT)
 - CONTRACTOR MUST REINSTATE ALL SERVICE LATERALS AFFECTED BY THE SANITARY SEWER RELOCATION TO THE NEW SANITARY SEWER PRIOR TO TERMINATING BYPASS PUMPING OPERATIONS. VERIFY ALL SERVICE THROUGH VIDEO SURVEY PRIOR TO DECOMMISSIONING EXISTING SEWER.
 - WHEN SEWER PIPES OF DIFFERENT DIAMETERS ARE PRESENT IN THE SAME MANHOLE, MATCH CROWNS.
 - ALL EXISTING SEWER OWNED BY CITY OF LAS VEGAS UNLESS OTHERWISE NOTED.
 - ALL STATIONING BASED ON ALIGNMENT "V"

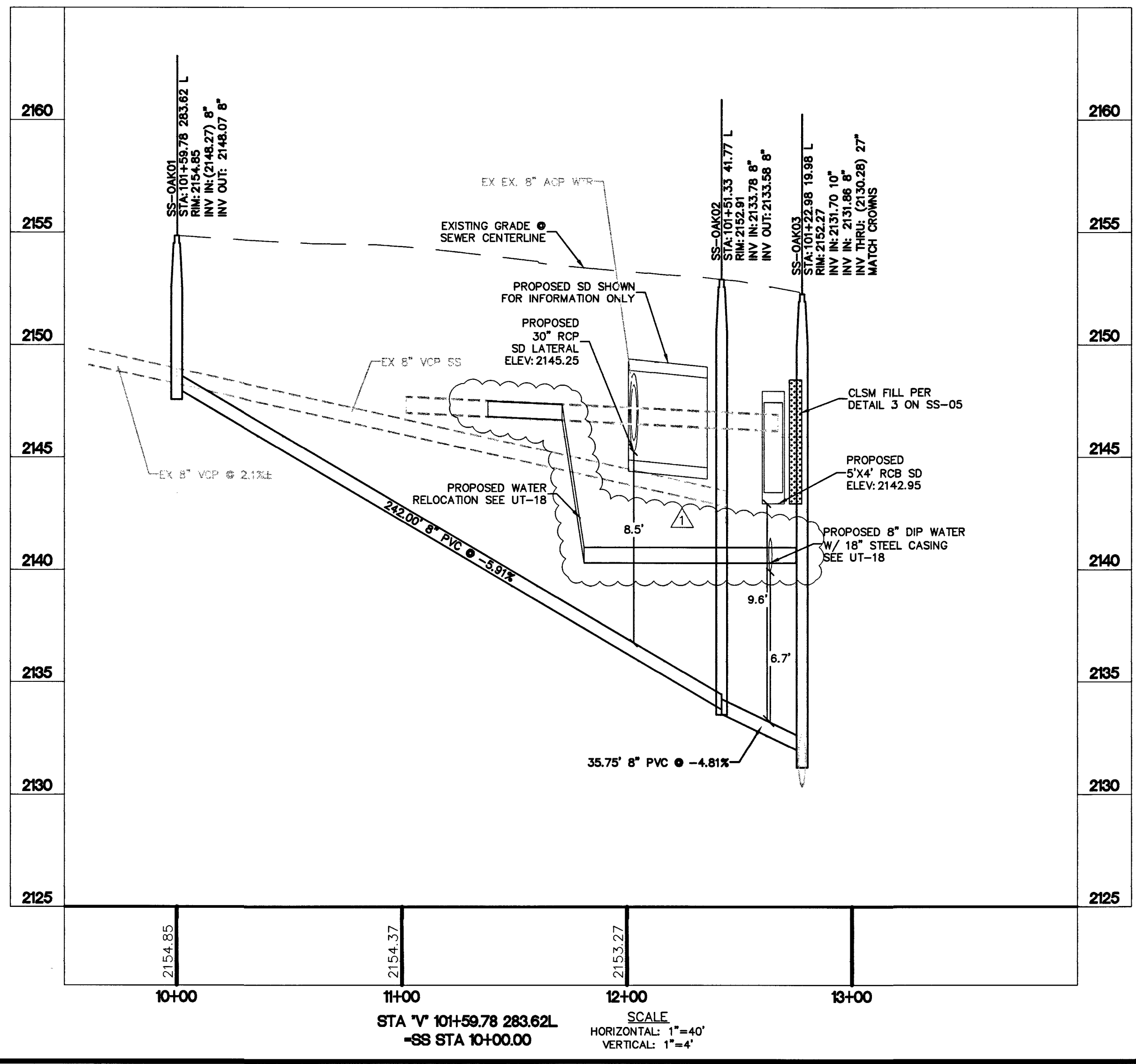
APPROVED FOR CONSTRUCTION
Shashi 4/12/12
 SOUTHERN NEVADA WATER AUTHORITY DATE
 SNWA APPROVAL IS VALID FOR ONE (1) YEAR FROM THE SIGNATURE DATE. IF CONSTRUCTION WITHIN THE EASEMENT OR RESTRICTED PIPE SAFETY ZONE IS NOT COMPLETE, PLANS MUST BE RESUBMITTED TO SNWA FOR APPROVAL.



FAST
 Call before you UnderGround.
 1-702-432-5300
 1-702-227-2929
 Call before you Dig
 1-800-227-2800



STA "V" 92+00.00 19.55L
 -SS STA 10+00.00
 SCALE
 HORIZONTAL: 1"=40'
 VERTICAL: 1"=4'



STA "V" 101+59.78 283.62L
 -SS STA 10+00.00
 SCALE
 HORIZONTAL: 1"=40'
 VERTICAL: 1"=4'

REVISIONS

NO.	DATE	SHEET	DESCRIPTION	APP'D
1	08/12/2011		DESERT INN RD TO BONANZA RD	

DEPARTMENT OF PUBLIC WORKS
 CAPITAL PROJECT MANAGEMENT
 CITY ENGINEER: DAVID BOWERS, PE, PTOE
 PROGRAM MANAGER: JEREMY LEAVITT, PE
 DESIGNED BY: N. WORKER
 DRAWN BY: J. SIMIANO
 CHECKED BY: D. TULLOCH
 DATE: 08/12/2011

VALLEY VIEW BOULEVARD
 DESERT INN RD TO BONANZA RD
 SANITARY RELOCATION
 VALLEY VIEW BLVD AND OAKLEY BLVD

TITLE: VALLEY VIEW BOULEVARD
 DESERT INN RD TO BONANZA RD
 SHEET: SS-03
 95 of 236
 DRAWING NO. 107-V5627