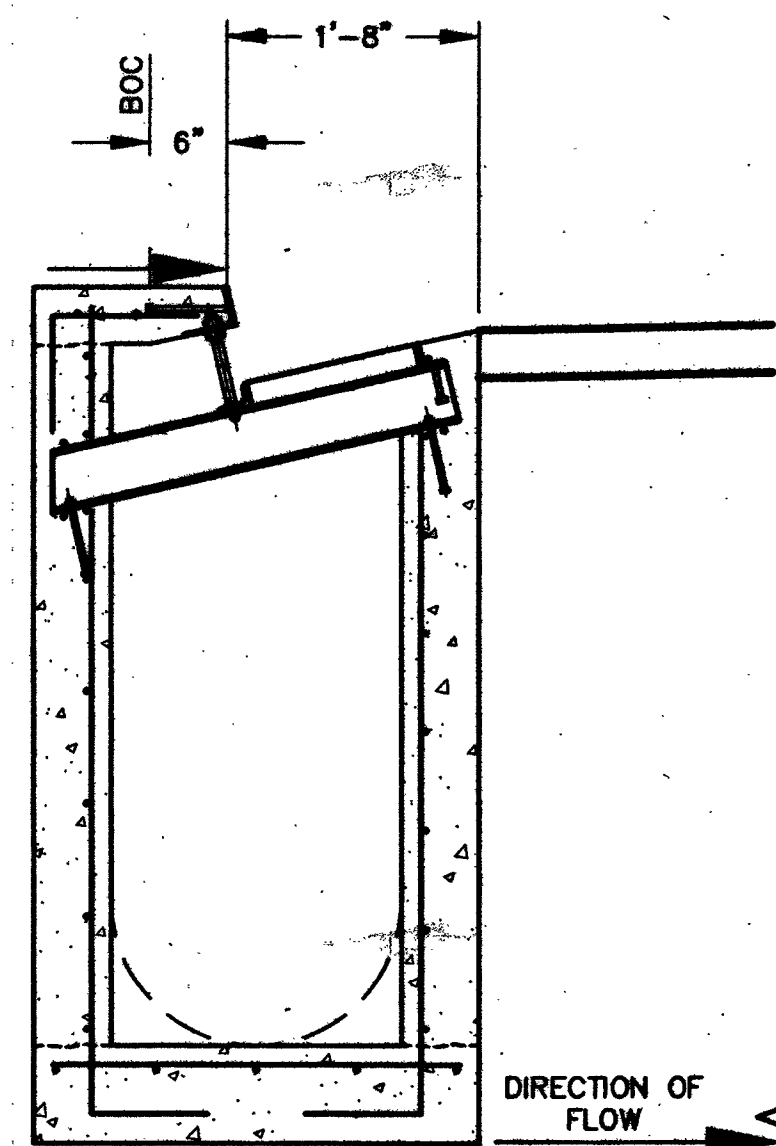
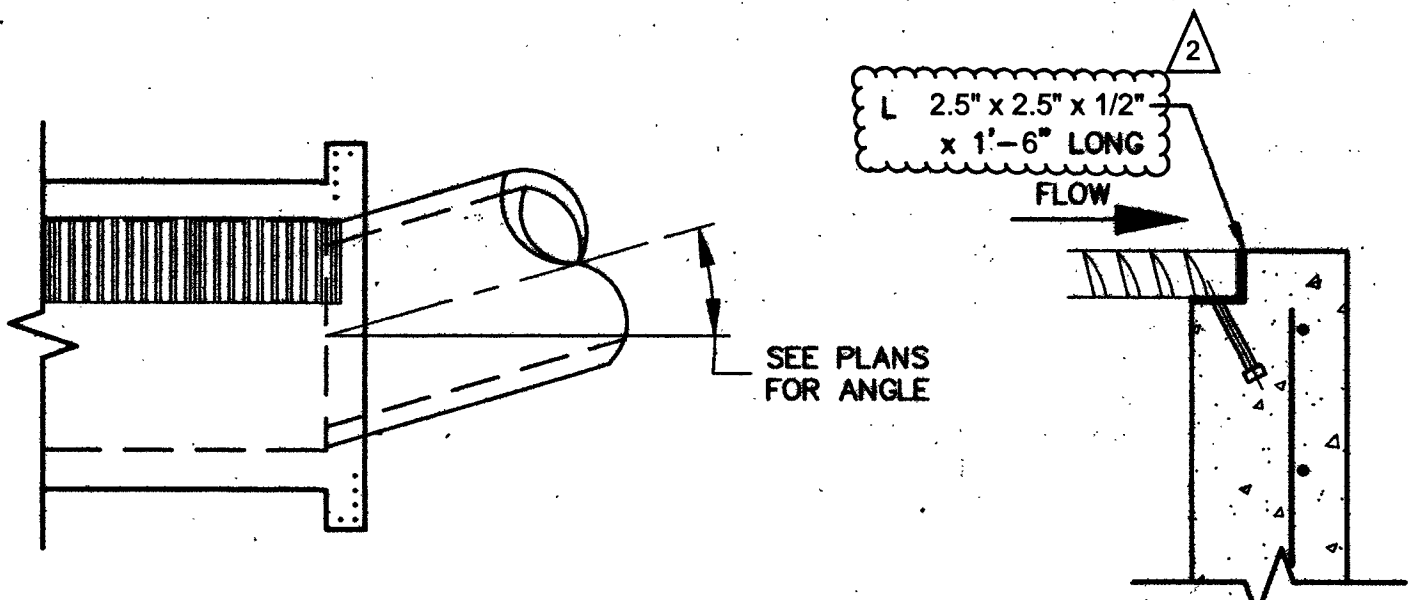


TYPE 'CM2' DROP INLET SECTION



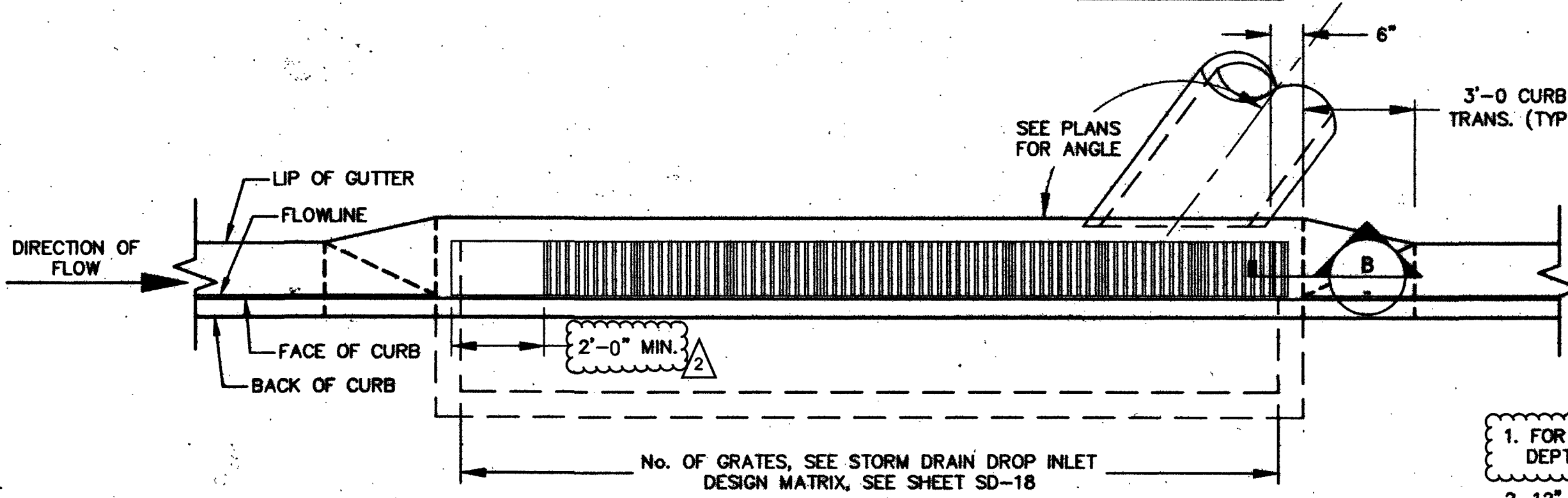
TYPE 'DM2' DROP INLET SECTION

TYPE C-D MODIFIED DROP INLET FOR NARROW GRATES



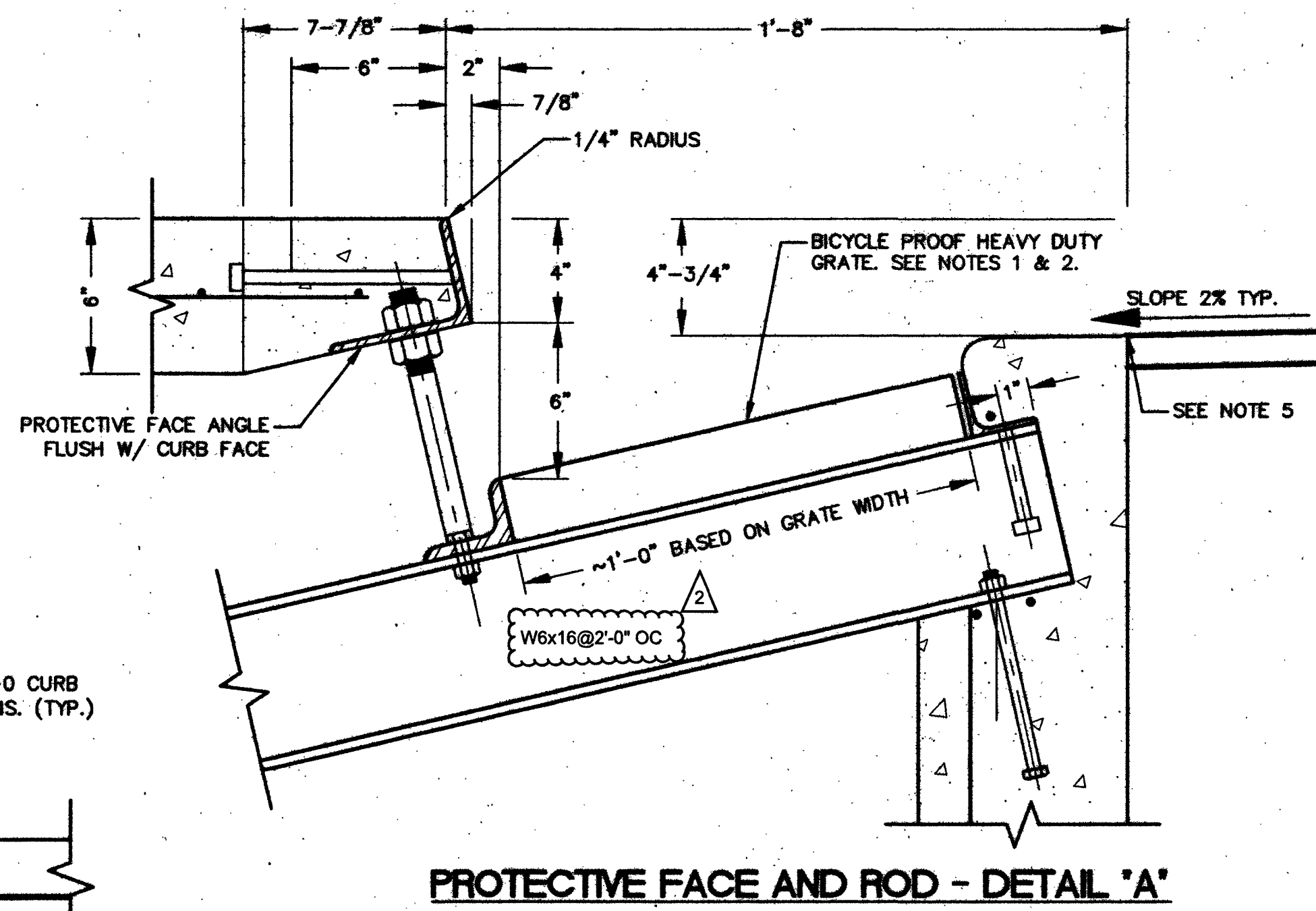
ALTERNATE CONNECTION DETAIL

SECTION 'B'



DROP INLET LAYOUT PLAN

INLET NOTE:
FOR ALL 412 INLETS, APPLY STORM WATER QUALITY STAMP
DWG NO 421 PER CLARK COUNTY STANDARD DRAWINGS.



PROTECTIVE FACE AND ROD - DETAIL 'A'

NOTES:

1. FOR INLET GRATE, CONTRACTOR TO USE A VANED GRATE APPROXIMATELY 12" WIDE X 30" LONG X 2 1/2" DEPTH. NEENAH R-4999-L6 OR APPROVED EQUAL. SEE SHEET SD-18 FOR STORM DRAIN DESIGN MATRIX.
2. 12" WIDE GRATES AND MODIFIED DETAIL TO BE UTILIZED WITH THE 18" MODIFIED CURB SECTIONS.
3. APPLY STORM WATER QUALITY STAMP PER CLARK COUNTY STANDARD DRAWING NO. 421.
4. REFERENCE STANDARD DETAIL ON SHEET SD-11 FOR FURTHER INFORMATION.
5. MATCH CONCRETE LIP FLUSH WITH UTACS. SLOPE CONCRETE TO MATCH ROADWAY SLOPE.

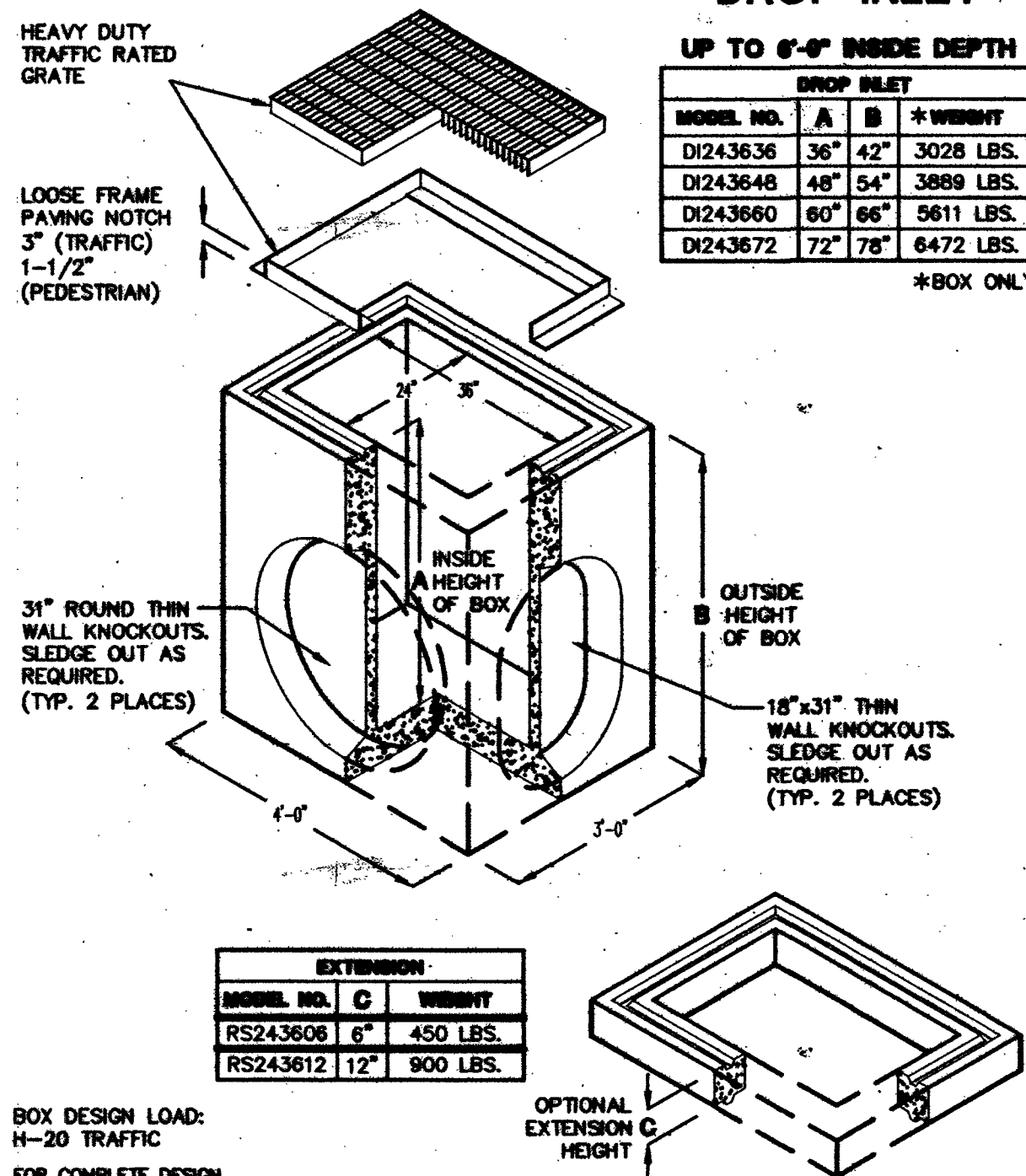
JENSEN 2436 OR APPROVED EQUAL
DI-VWR-10 - STATION: 66+07±

24"x36" DROP INLET

UP TO 6'-0" INSIDE DEPTH

MODEL NO.	A	B	*WEIGHT
DI243636	36"	42"	3028 LBS.
DI243648	48"	54"	3889 LBS.
DI243660	60"	66"	5611 LBS.
DI243672	72"	78"	6472 LBS.

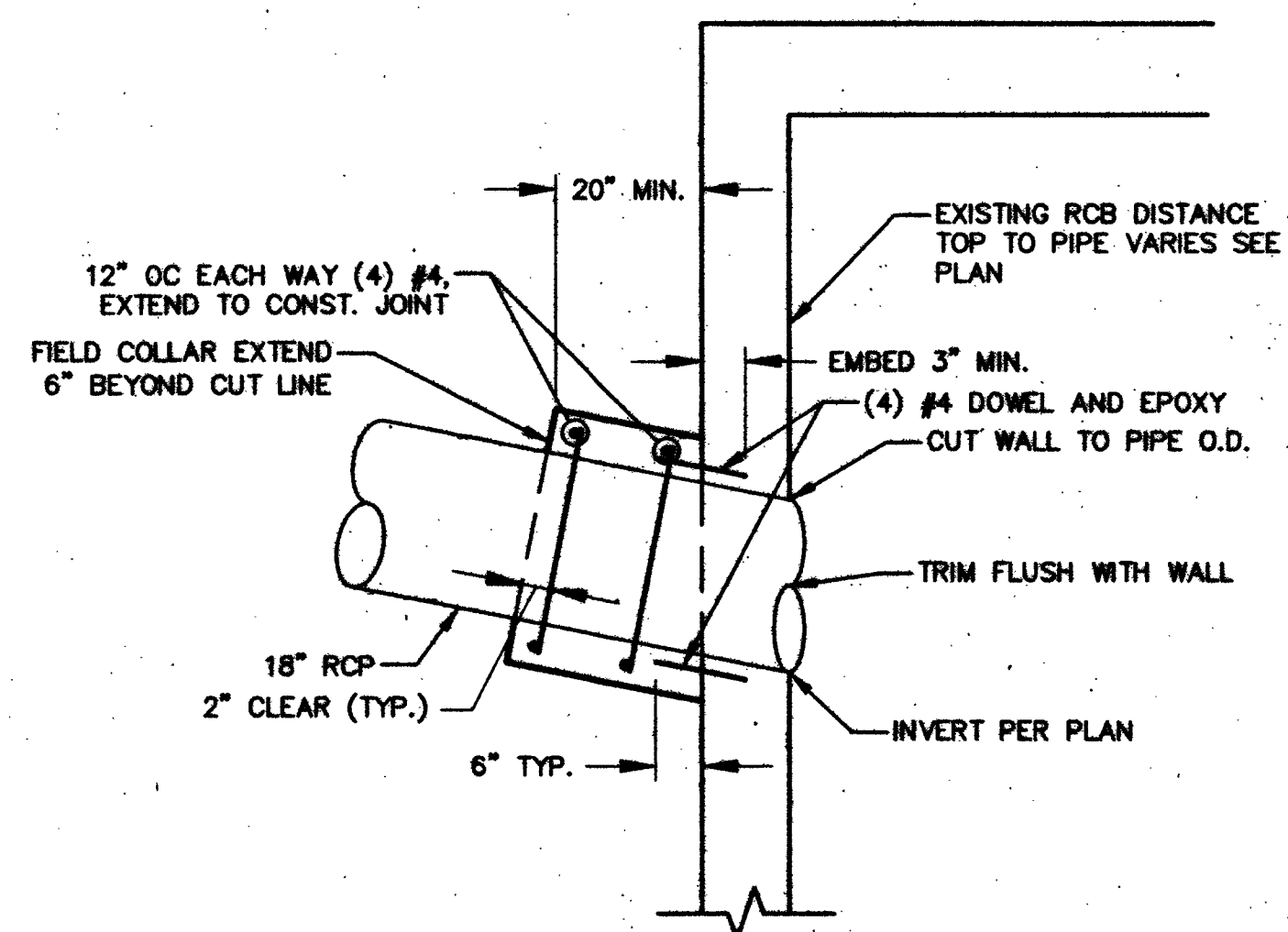
*BOX ONLY



MODEL NO.	C	WEIGHT
RS243608	8"	450 LBS.
RS243612	12"	900 LBS.

BOX DESIGN LOAD:
H-20 TRAFFIC
FOR COMPLETE DESIGN AND PRODUCT INFORMATION, CONTACT JENSEN PRECAST.

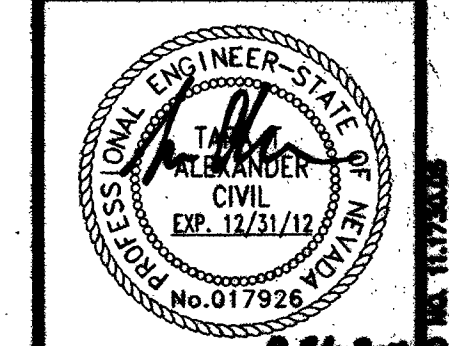
TYPICAL REINFORCING AT PENETRATION IN CHANNEL VAULT OR RCB WALL
NOT TO SCALE



NO.	DATE	SHEET	DESCRIPTION	APP'D
1	01/08/12	2	MODIFY GRATE TYPE/LENGTH	

DEPARTMENT OF PUBLIC WORKS
CAPITAL PROJECT MANAGEMENT
CITY ENGINEER: DAVID BOWERS, PE, PTOE
PROGRAM MANAGER: JEREMY LEAVITT, PE
DESIGNED BY: T. ALEXANDER
DRAWN BY: M. SACKSCHWESKY
CHECKED BY: D. TULLOCH
DATE: 08/12/2011

VALLEY VIEW BOULEVARD
DESERT INN RD TO BONANZA RD
STORM DRAIN DETAILS



SHEET:
SD-12
85 of 236
DRAWING NO.
107-V5627