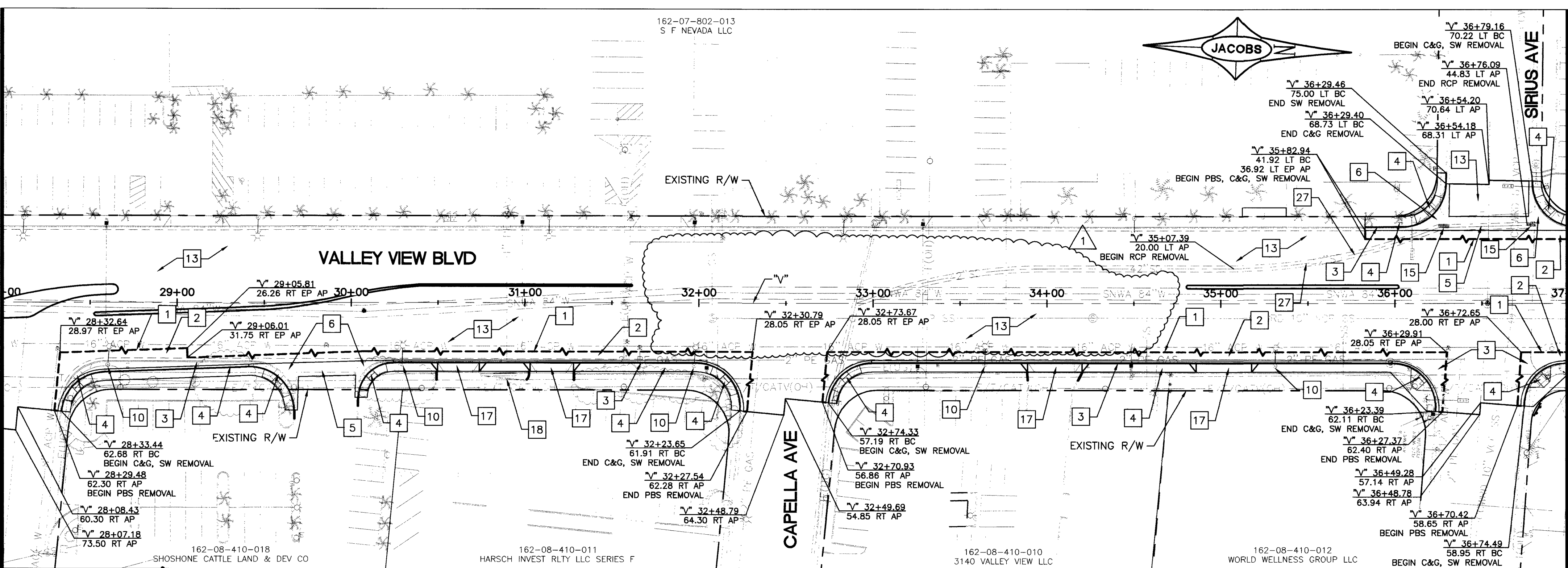


SEE SHEET R-01

MATCHLINE

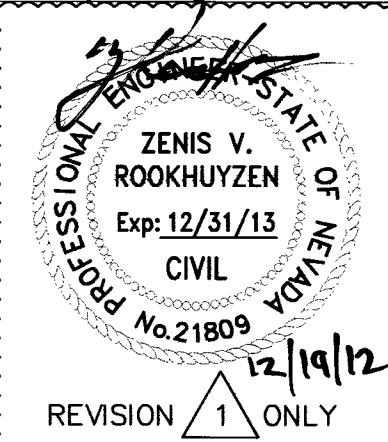
V 28+00



SEE BELOW

MATCHLINE

V 37+00



**SNWA NOTES**

1. ALL SNWA MONUMENTS ARE TO BE GPS'D AND PROTECTED DURING REMOVAL WORK. NEW MONUMENT STAMPED WITH STATIONING AND TYPE AND SHALL BE PLACED IN A TRAFFIC RATED CHRISTY BOX AS PER SNWA REQUIREMENTS.

**APPROVED FOR CONSTRUCTION**

*D. SHARI* 12/31/12 DATE

SOUTHERN NEVADA WATER AUTHORITY

SNWA APPROVAL IS VALID FOR ONE (1) YEAR FROM THE SIGNATURE DATE. IF CONSTRUCTION WITHIN THE EASEMENT OR RESTRICTED PIPE SAFETY ZONE IS NOT COMPLETE, PLANS MUST BE RESUBMITTED TO SNWA FOR APPROVAL.

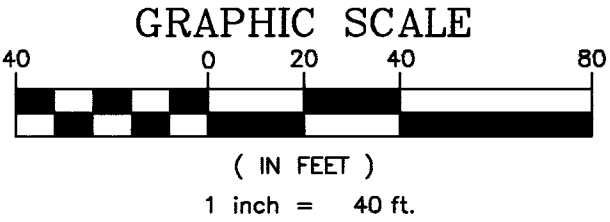
**APPROVED FOR CONSTRUCTION**

1ST APPROVAL 11/02/11

*A. Omshede* 01/08/13 DATE

LWVD ENGINEERING SERVICES MANAGER

PROJECT NO. 116494



- REMOVAL NOTES**
- SAWCUT AND MATCH EXISTING
  - REMOVE BITUMINOUS SURFACE
  - REMOVE CURB AND GUTTER
  - REMOVE CONCRETE SIDEWALK/SIDEWALK RAMP
  - REMOVE CROSS GUTTER
  - REMOVE CROSS GUTTER SPANDREL
  - REMOVE ISLAND MEDIAN
  - REMOVE PAVEMENT MARKINGS
  - REMOVE CHAIN-LINK FENCE
  - REMOVE AND SALVAGE STREET LIGHT POLE AND LED LUMINAIRE
  - REMOVE CURB
  - 3/4" COLD MILL
  - 2 3/4" COLD MILL
  - REMOVE BUS SHELTER AND/OR BENCH (BY OTHERS)
  - REMOVE DROP INLET
  - REMOVE TREE(S) - SEE LS SHEETS
  - REMOVE CONCRETE DRIVEWAY
  - REMOVE SCREEN WALL
  - REMOVE AND RESET MARQUEE SIGN
  - REMOVE RESIN PAVED TRAIL
  - REMOVE RETAINING WALL
  - REMOVE AND RESET PRIVATE LIGHT POLE
  - REMOVE AND RESET REMEDIATION WELLS
  - 3 1/4" COLD MILL
  - EDGE MILL PER DETAIL A ON SHEET RD-02
  - REMOVE CONCRETE SURFACE
  - REMOVE RCP STORM DRAIN PIPE
  - REMOVE STORM DRAIN MANHOLE
  - REMOVE SANITARY SEWER LINE
  - PLUG AND CAP EXISTING SANITARY SEWER LINE PER DETAIL 2 ON SS-05
  - REMOVE SANITARY SEWER MANHOLE
  - REMOVE SANITARY SEWER STEEL JACKING CASING
  - WEDGE MILL PER DETAIL B ON SHEET RD-02
  - WEDGE MILL PER DETAIL C ON SHEET RD-02

- LEGEND**
- [Symbol] BITUMINOUS SURFACE REMOVAL
  - [Symbol] COLD MILL (DEPTH VARIES SEE PLANS)

- NOTE:**
- SEE UT-SHEETS FOR UTILITY REMOVALS AND ADJUSTMENTS
  - SEE LS-SHEETS FOR LANDSCAPE REMOVALS
  - SEE TS AND L-SHEETS FOR TRAFFIC SIGNAL AND LIGHTING REMOVALS
  - SEE DG-SHEETS FOR REMOVALS ON PRIVATE PROPERTIES
  - PROTECT SNWA FACILITIES IN PLACE. SEE SHEET UT-12 FOR LOCATIONS

**FAST**

Call before you UnderGround.

1-702-432-5300

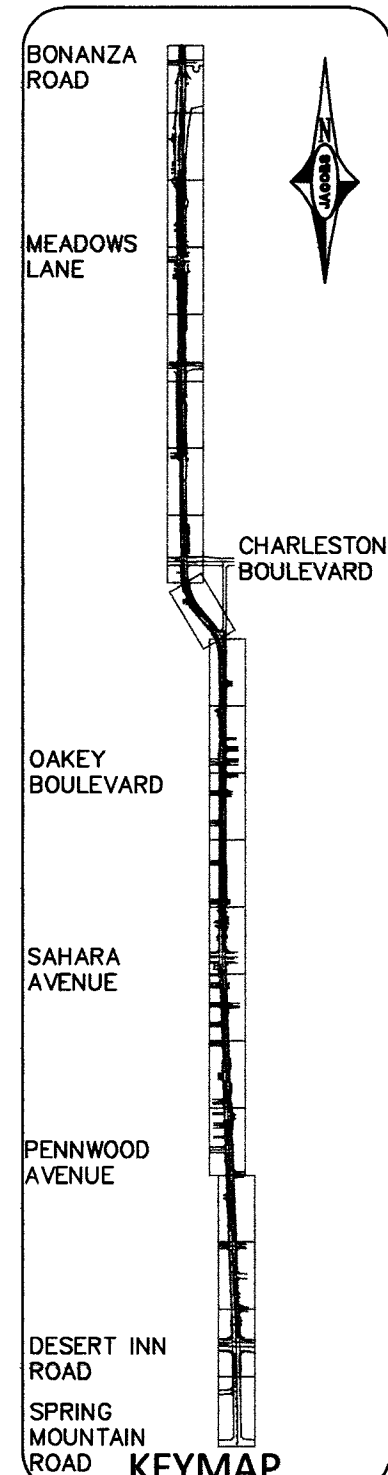
CALL BEFORE YOU BURST OVERHEAD

1-702-227-2929

Call before you Dig!

811

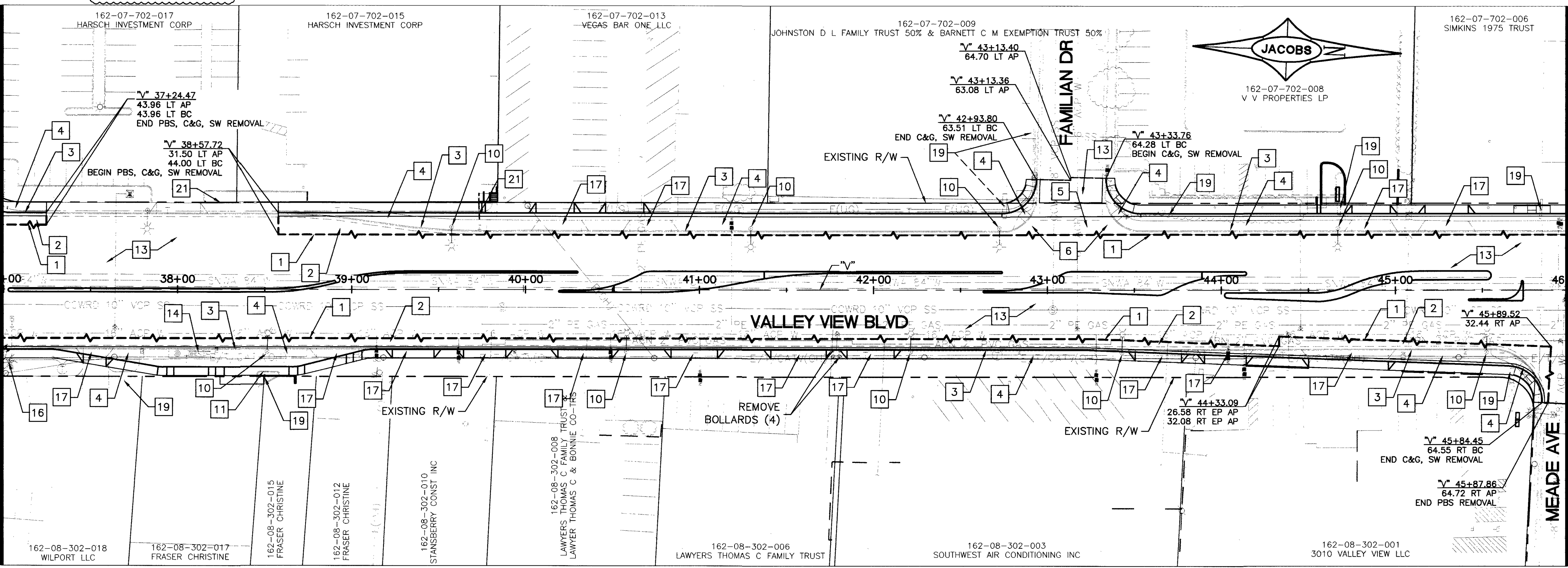
1-800-227-2600



SEE ABOVE

MATCHLINE

V 37+00



SEE SHEET R-03

MATCHLINE

V 46+00

**REVISIONS**

NO.	DATE	SHEET	DESCRIPTION	APP'D
1	11/14/12	DEL	FOR LANE AND ISLAND PER CIV 8M	

**DEPARTMENT OF PUBLIC WORKS**

**CAPITAL PROJECT MANAGEMENT**

CITY ENGINEER: DAVID BOWERS, PE, PTOE  
PROGRAM MANAGER: JEREMY LEAVITT, PE

DESIGNED BY: V. PARMI  
DRAWN BY: J. RIPLEY  
CHECKED BY: J. JENSEN

DATE: 08/12/2011

**VALLEY VIEW BOULEVARD**

**DESERT INN RD TO BONANZA RD**

**REMOVAL PLAN**

**V 28+00 TO V 46+00**

TITLE: VALLEY VIEW BOULEVARD  
SHEET: R-02

PROFESSIONAL ENGINEER - STATE OF NEVADA

JOSEPH G. JENSEN  
Exp: 6/30/13  
CIVIL  
NO. 5597

SHEET: R-02  
26 of 236  
DRAWING NO. 107-V5627