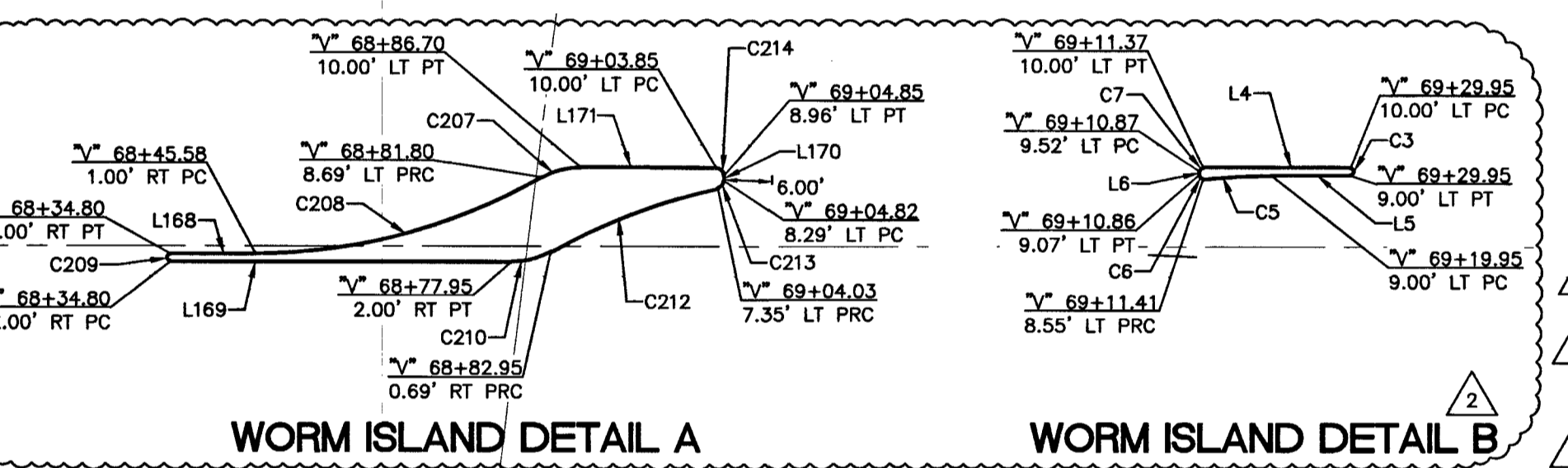
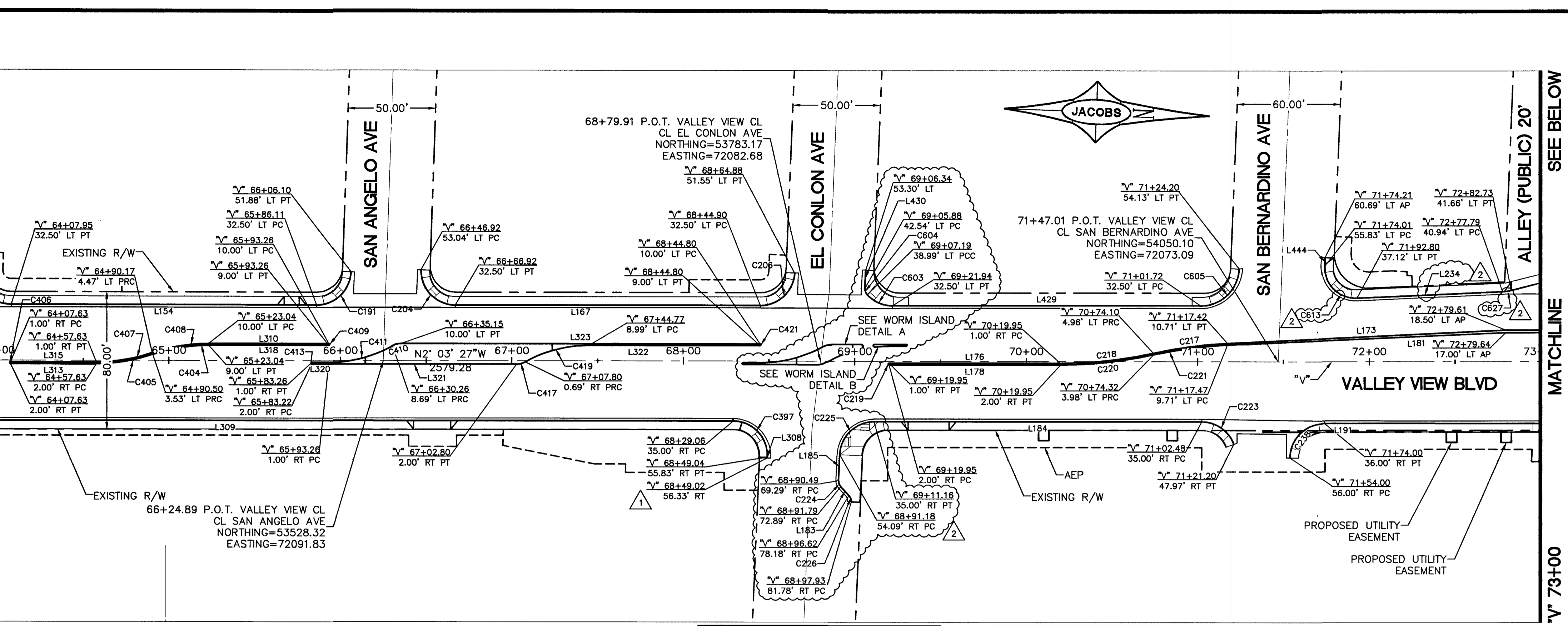
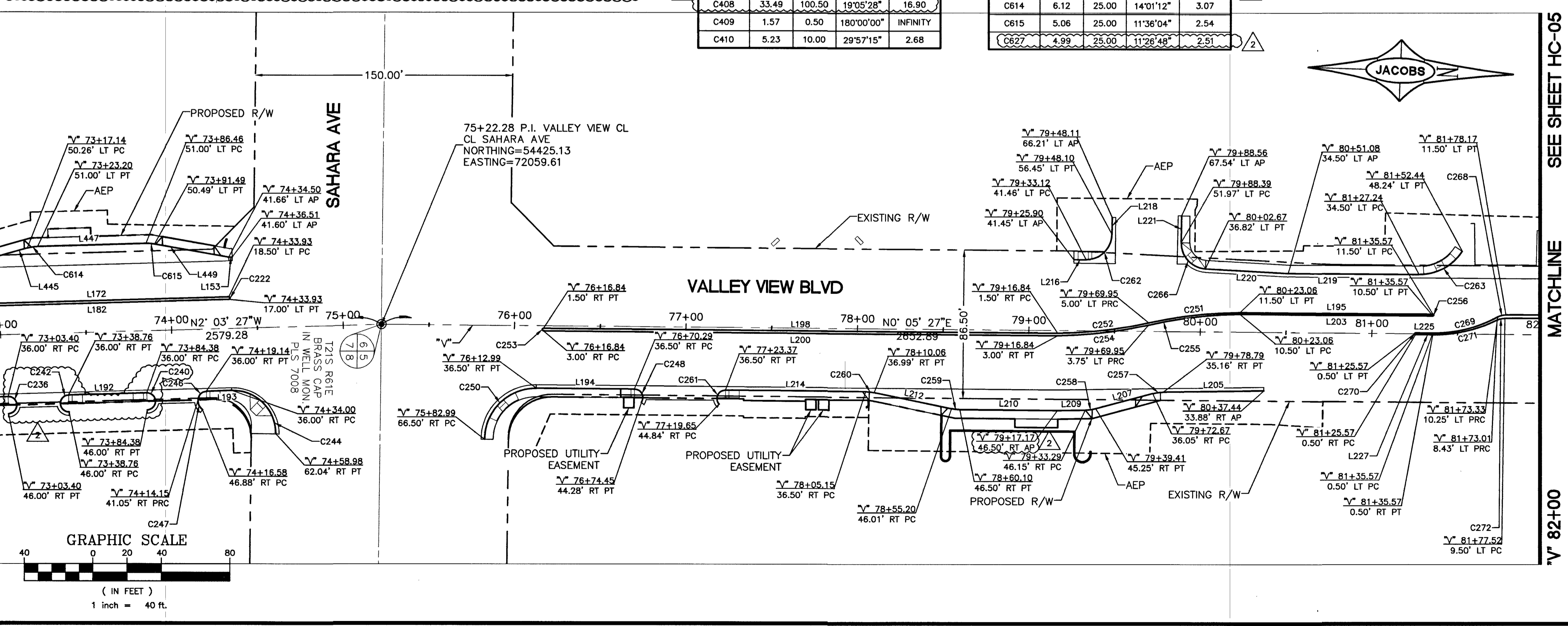
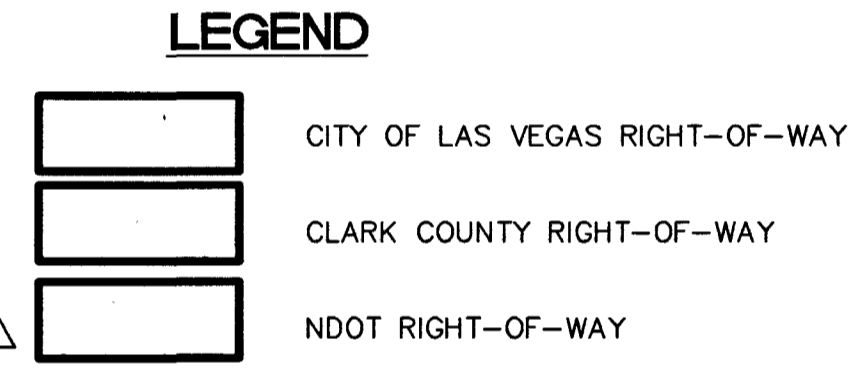


SEE SHEET HC-03  
MATCHLINE  
V' 64+00  
MATCHLINE  
V' 73+00  
MATCHLINE  
V' 73+00  
MATCHLINE  
V' 82+00  
SEE SHEET HC-05



CURVE #	LENGTH	RADIUS	DELTA	TANGENT
C269	39.42	78.00	28°57'18"	20.14
C270	1.57	0.50	180°00'00"	INFINITY
C271	38.84	83.00	26°48'52"	19.78
C272	4.68	10.00	26°48'52"	2.38
C397	32.25	20.00	92°23'07"	20.85
C404	33.15	99.50	19°05'28"	16.73
C405	33.49	100.50	19°05'28"	16.90
C406	1.57	0.50	180°00'00"	INFINITY
C407	33.15	99.50	19°05'28"	16.73
C408	33.49	100.50	19°05'28"	16.90
C409	1.57	0.50	180°00'00"	INFINITY
C410	5.23	10.00	29°57'15"	2.68

CURVE #	LENGTH	RADIUS	DELTA	TANGENT
C411	38.69	74.00	29°57'15"	19.80
C413	1.57	0.50	180°00'00"	INFINITY
C417	5.23	10.00	29°57'15"	2.68
C419	38.65	74.00	29°55'27"	19.78
C421	1.57	0.50	180°00'00"	INFINITY
C603	16.58	20.00	47°29'27"	8.80
C604	3.89	5.00	44°34'47"	2.05
C605	34.47	22.50	87°47'20"	21.65
C613	29.80	18.00	94°52'18"	19.60
C614	6.12	25.00	14°01'12"	3.07
C615	5.06	25.00	11°36'04"	2.54
C627	4.99	25.00	11°26'46"	2.91



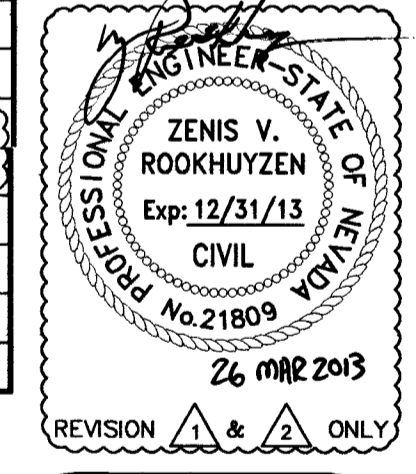
SEE BELOW  
MATCHLINE  
V' 73+00  
MATCHLINE  
V' 82+00  
SEE SHEET HC-05

LINE TABLE			CURVE TABLE				
LINE #	LENGTH	BEARING	CURVE #	LENGTH	RADIUS	DELTA	TANGENT
L4	18.58	S2° 03' 27"W	C3	1.57	0.50	180°00'00"	INFINITY
L5	10.00	N2° 03' 27"W	C5	8.56	74.00	6°37'37"	4.28
L6	0.45	N89° 44' 24"W	C6	0.86	0.50	98°38'37"	0.58
L153	2.02	N2° 03' 27"W	C7	0.77	0.50	87°40'57"	0.48
L154	178.16	N2° 03' 27"W	C191	30.80	20.00	88°14'12"	19.39
L167	177.98	N2° 03' 27"W	C204	31.96	20.00	91°33'19"	20.55
L168	10.78	S2° 03' 27"W	C206	30.47	20.00	87°16'52"	19.07
L169	43.15	N2° 03' 27"W	C207	5.11	11.36	25°46'29"	2.60
L170	0.67	N89° 44' 24"W	C208	37.91	74.02	29°20'35"	19.38
L171	17.15	S2° 03' 27"W	C209	1.57	0.50	180°00'00"	INFINITY
L172	154.32	S2° 03' 27"W	C210	5.23	10.00	29°57'15"	2.68
L173	162.38	S4° 48' 23"E	C212	22.65	74.00	17°32'08"	11.41
L176	100.00	S2° 03' 27"W	C213	1.32	1.00	75°33'53"	0.78
L178	100.00	N2° 03' 27"W	C214	1.51	1.00	92°19'03"	1.04
L181	162.34	N4° 37' 47"W	C217	43.75	251.00	9°59'17"	21.93
L182	154.28	N2° 03' 27"W	C218	54.59	249.00	12°33'37"	27.40
L183	7.17	N45° 33' 18"E	C219	1.57	0.50	180°00'00"	INFINITY
L184	191.32	S2° 03' 27"W	C220	54.80	250.00	12°33'37"	27.51
L185	15.21	S89° 26' 42"E	C221	43.58	250.00	9°59'17"	21.85
L191	129.40	S2° 03' 27"W	C222	2.36	0.75	180°00'00"	INFINITY
L192	45.62	S2° 03' 27"W	C223	24.24	20.00	69°26'04"	13.86
L193	14.86	S2° 03' 27"W	C224	3.93	5.00	45°00'00"	2.07
L194	57.30	S0° 05' 27"W	C225	30.50	20.00	87°23'15"	19.11
L195	112.51	S0° 05' 27"W	C226	3.93	5.00	45°00'00"	2.07
L198	300.00	S0° 05' 27"W	C236	15.71	5.00	180°00'00"	INFINITY
L200	300.00	N0° 05' 27"E	C238	31.42	20.00	90°00'01"	20.00
L203	112.51	S0° 05' 27"W	C240	15.71	5.00	180°00'00"	INFINITY
L205	58.67	S1° 09' 25"E	C242	15.71	5.00	180°00'00"	INFINITY
L207	34.51	S15° 21' 53"E	C244	40.31	25.00	92°22'52"	26.06
L209	16.09	S1° 09' 25"E	C246	7.90	5.00	90°35'51"	5.05
L210	57.09	S0° 05' 27"W	C247	6.60	6.41	58°59'21"	3.63
L212	46.04	S11° 24' 03"W	C248	10.80	5.00	123°46'13"	9.36
L214	81.78	S0° 05' 27"W	C250	47.12	30.00	90°00'00"	30.00
L216	7.23	N0° 00' 53"E	C251	53.61	250.00	12°17'13"	26.91
L218	9.76	N89° 52' 13"W	C252	53.61	250.00	12°17'13"	26.91
L219	76.16	S0° 05' 27"W	C253	2.36	0.75	180°00'00"	INFINITY
L220	48.46	S2° 49' 55"W	C254	53.64	249.65	12°18'37"	26.92
L221	15.54	N89° 16' 20"W	C255	53.65	249.98	12°17'46"	26.93
L225	10.00	S0° 05' 27"W	C256	1.57	0.50	180°00'00"	INFINITY
L227	10.00	N0° 05' 27"E	C257	6.20	25.00	14°12'28"	3.12
L234	85.08	N4° 37' 50"W	C258	6.20	25.00	14°12'28"	3.12
L308	0.50	N89° 40' 20"W	C259	4.93	25.00	11°18'36"	2.48
L309	515.53	S2° 03' 27"E	C260	4.93	25.00	11°18'36"	2.48
L310	70.21	S2° 03' 27"E	C261	11.52	5.00	132°01'15"	11.24
L313	50.00	S2° 03' 27"E	C262	23.53	15.00	89°53'06"	14.97
L315	50.00	N2° 03' 27"W	C263	29.93	30.00	57°10'12"	16.35
L318	70.21	N2° 03' 27"W	C266	23.01	15.00	87°53'45"	14.46
L320	10.00	S2° 03' 27"E	C268	5.05	10.00	28°57'18"	2.58
L321	119.58	N2° 03' 25"W					
L322	100.04	N2° 03' 46"W					
L323	209.65	S2° 03' 27"E					
L429	179.78	N2° 03' 27"W					
L430	10.76	N89° 59' 13"W					
L444	4.86	S89° 45' 33"E					
L445	35.47	N16° 04' 39"W					
L447	63.26	N2° 03' 27"W					
L449	43.90	N9° 32' 38"E					

NOTES:  
1. RIGHT-OF-WAY SHOWN HEREON HAS BEEN COMPILED FROM MULTIPLE RECORD DOCUMENTS. IN MANY CASES, THE DOCUMENTS WERE TIED TO EXISTING MONUMENTATION WHICH HAS BEEN LOST. IN SUCH CASES RIGHT-OF-WAY WAS CONSTRUCTED FROM RECORD POSITIONS OF SAID CONTROLLING MONUMENTS.  
2. CURVE AND LINE DATA FOR MEDIAN ISLAND IS AT FACE CURB.  
3. CURVE AND LINE DATA FOR TYPE "L" CURB IS AT BACK OF CURB.  
4. ELEVATIONS AND BENCHMARK ARE BASED ON CITY OF LAS VEGAS BENCHMARK DATUM OF 2008.

**BASIS OF BEARINGS:**  
THE BASIS OF BEARINGS USED HEREON IS THE NEVADA STATE PLANE COORDINATE SYSTEM (NAD83), NEVADA EAST ZONE (2701), BASED ON CLARK COUNTY GIS CONTROL POINTS 876 AND 826, AS SHOWN ON A RECORD OF SURVEY IN FILE 68, PAGE 53 OF SURVEYS, OFFICIAL RECORD, CLARK COUNTY, NEVADA.

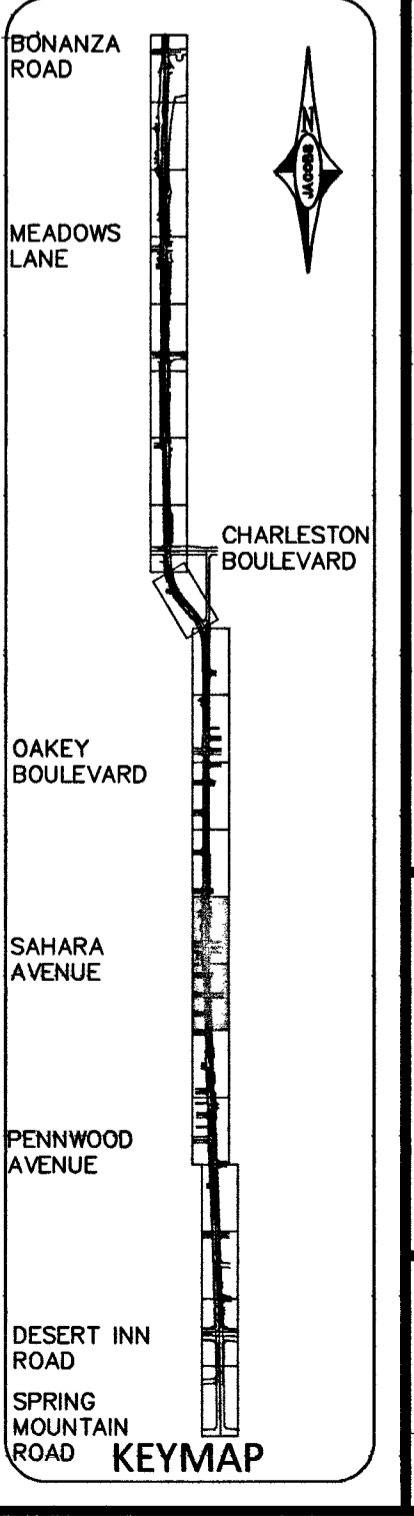
**BENCHMARK:**  
CLV BM 2LVOI 3156; RIVET & PLATE IN TOP OF CURB, SW CORNER OF VALLEY VIEW AND FULTON, ELEV. 2144.86" (NAVD83)



**FAST**  
Call before you UnderGround.  
1-702-432-5300

**Call before you Dig**  
1-702-227-2929

**811**  
1-800-227-2600



**REVISIONS**

NO.	DATE	SHEET	DESCRIPTION	APP'D
1	7/30/12	1	DELETE RT TURN @ EL CONLON	
2	3/4/13	2	ADD EL CONLON CROSSWALK	

**DEPARTMENT OF PUBLIC WORKS  
CAPITAL PROJECT MANAGEMENT**

CITY ENGINEER: DAVID BOWERS, PE, P.O.E.  
PROGRAM MANAGER: JEREMY LEAVITT, PE

DESIGNED BY: V. PARMI  
DRAWN BY: M. SACKSOWSKY  
CHECKED BY: B. TAYLOR

DATE: 08/12/2011

**VALLEY VIEW BOULEVARD  
DESERT INN RD TO BONANZA RD  
HORIZONTAL CONTROL PLAN  
"V' 64+00 TO "V' 82+00**

TITLE: SHEET: **HC-04**  
14 of 236  
DRAWING NO. **107-V5627**

3/2/13