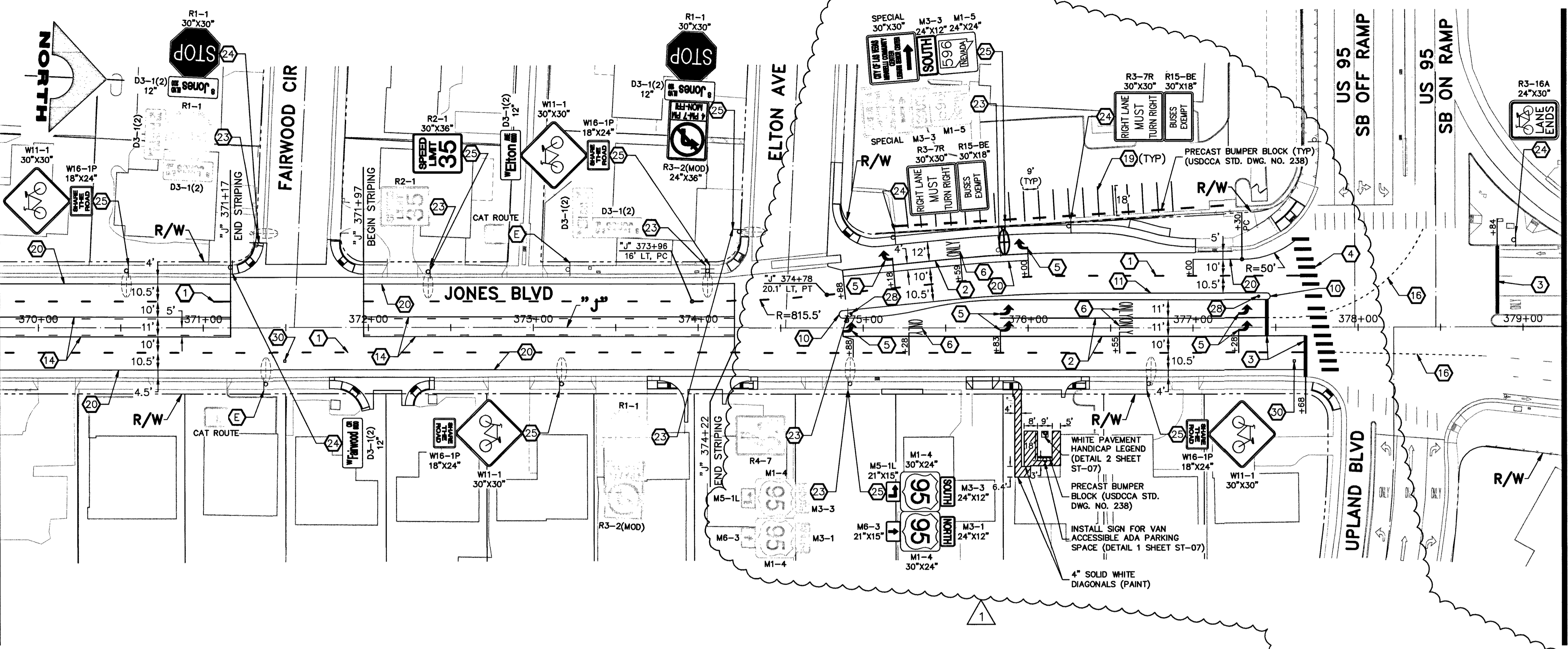


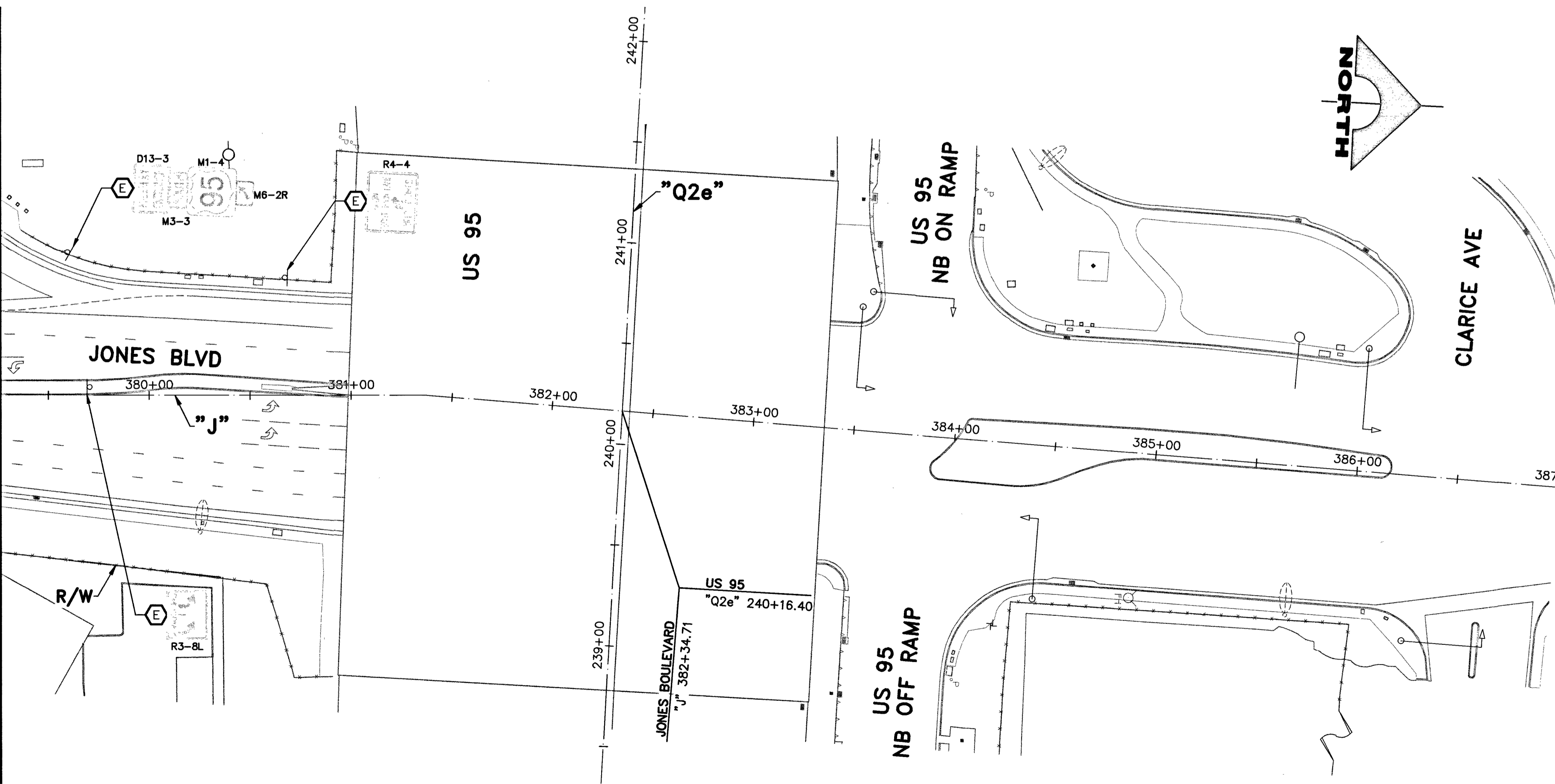
SEE ABOVE RIGHT MATCHLINE "J" 379+25.00  
 MATCHLINE "J" 369+75.00 SEE SHEET ST-06



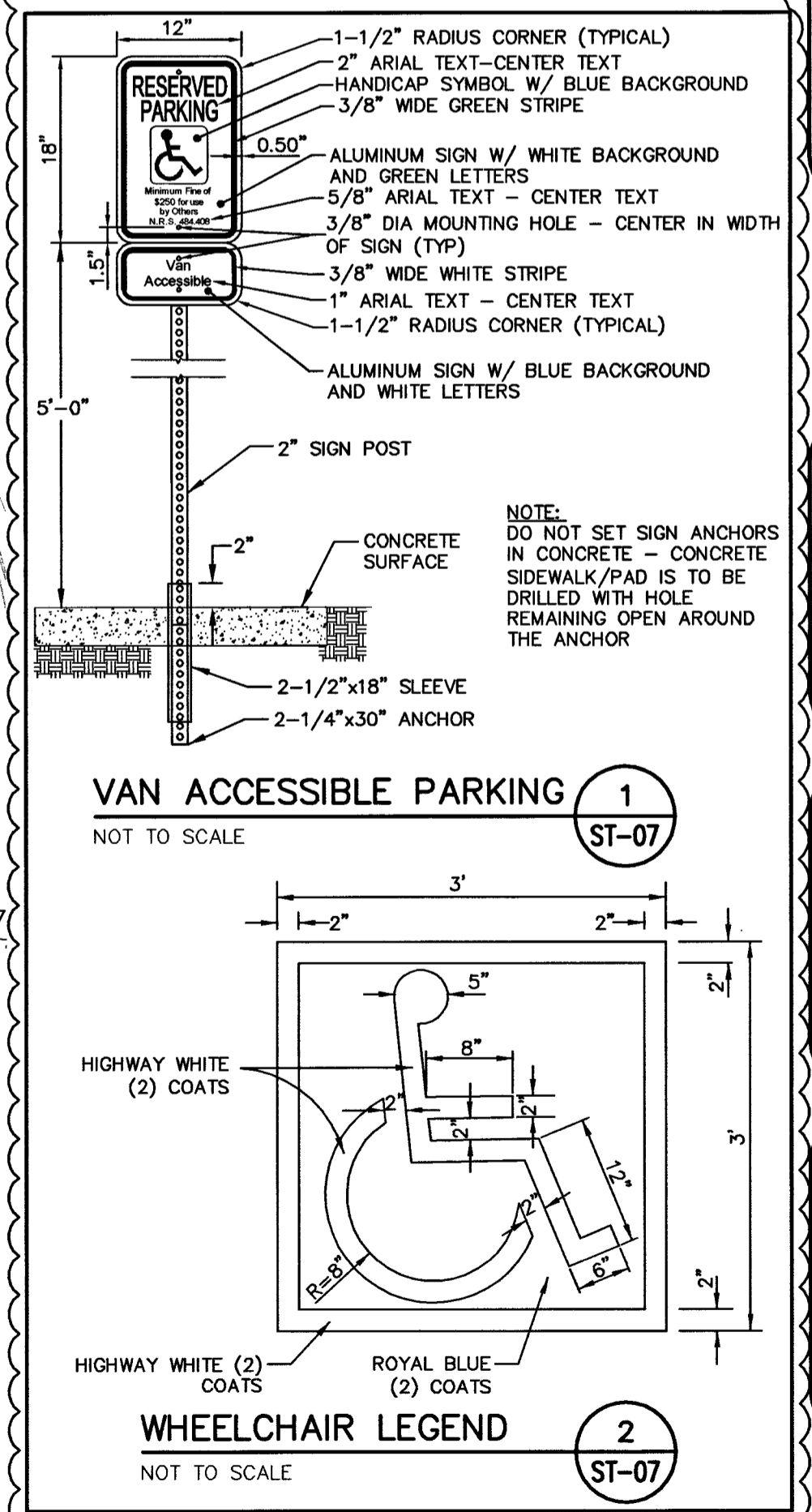
MATCHLINE SEE BELOW LEFT "J" 379+25.00

- ### SIGNING AND STRIPING NOTES
- BROKEN WHITE LANE LINE (RPM) (NDOT STD PLAN T-37.1.1)
  - 8-INCH SOLID WHITE (STORAGE) LINE (RPM) (NDOT STD PLAN T-37.1.1)
  - 24-INCH WHITE STOP LINE (PMF-TYPE 2)
  - CROSSWALK (PMF-TYPE 2) (NDOT STD PLAN T-38.1.3)
  - WHITE PAVEMENT ARROW (PMF-TYPE 2)
  - WHITE PAVEMENT "ONLY" (PMF-TYPE 2)
  - WHITE PAVEMENT "BUS" (PMF-TYPE 2)
  - WHITE PAVEMENT BIKE LEGEND (PMF-TYPE 2) (NDOT STD PLAN T-38.1.1)
  - MEDIAN NOSE MARKINGS (WHITE) (NDOT STD PLAN T-38.1.5)
  - MEDIAN NOSE MARKINGS (YELLOW) (NDOT STD PLAN T-38.1.5)
  - PAINT ENTIRE MEDIAN ISLAND (YELLOW)
  - PAINT ENTIRE MEDIAN ISLAND (WHITE) (SEE DETAIL 1, SHEET ST-09)
  - DOUBLE SOLID YELLOW CENTERLINE (RPM) (NDOT STD PLAN T-37.1.1)
  - BROKEN YELLOW W/ SOLID YELLOW LINE CENTERLINE (RPM) (NDOT STD PLAN T-37.1.1)
  - DOTTED WHITE (DROP) LINE (RPM) (NDOT STD PLAN T-37.1.1)
  - CAT TRACKS (RPM) (NDOT STD. PLAN T-37.1.2) (SEE DETAILS ON SHEET ST-09)
  - 8-INCH WHITE SKIP LINE (PPM) (USDCCA STD. DWG. NO. 244.5)
  - 4-INCH SOLID WHITE LINE (PPM)
  - 4-INCH SOLID WHITE LINE (PAINT)
  - 6-INCH SOLID WHITE LINE (PMF-TYPE 2)
  - 8-INCH SOLID WHITE LINE (PPM)
  - SOLID WHITE TO 5-FOOT WIDTH (PMF-TYPE 2)
  - REMOVE AND SALVAGE SIGN(S)
  - INSTALL NEW SIGN(S) (GROUND MOUNTED)
  - INSTALL NEW SIGN(S) (POLE MOUNTED)
  - SOLID YELLOW TO 5-FOOT WIDTH (PMF-TYPE 2)
  - 4-INCH SOLID YELLOW LINE (PPM)
  - INSTALL YELLOW K-71 OBJECT MARKER 5-FT BEYOND MEDIAN NOSE
  - INSTALL WHITE K-71 OBJECT MARKER 5-FT BEYOND MEDIAN NOSE
  - INSTALL BLUE REFLECTIVE RPM AT FIRE HYDRANT
  - EXISTING SIGN(S) TO REMAIN

- ### NOTES
- SEE GENERAL NOTES ON SHEET NO. 0-3.
  - EXISTING MARKINGS IN CONFLICT WITH PROPOSED MARKINGS SHALL BE REMOVED BY METHODS APPROVED BY THE ENGINEER.
  - IF THE IMPROVEMENTS NECESSITATE THE OBLITERATION, TEMPORARY OBSTRUCTION, TEMPORARY REMOVAL, OR RELOCATION OF ANY EXISTING TRAFFIC MARKINGS, SUCH MARKINGS SHALL BE RESTORED OR REPLACED WITH LIKE MATERIALS TO THE SATISFACTION OF THE ENGINEER.
  - EXISTING SIGNS NOT SHOWN SHALL REMAIN IN PLACE. ALL EXISTING TRAFFIC SIGNS AND EQUIPMENT TO BE REMOVED SHALL BE SALVAGED BY THE CONTRACTOR AND DELIVERED TO 3100 EAST BONANZA AVENUE. LOCATIONS OF NEW SIGNS SHALL BE ADJUSTED IN FIELD TO AVOID SIGHT OBSTRUCTION WITH EXISTING LANDSCAPING WITH APPROVAL OF THE ENGINEER.
  - LANE DIMENSIONS ARE TO LIP OF GUTTER, OR FACE OF MEDIAN CURB/ BARRIER RAIL.
  - MEDIAN ISLANDS LESS THAN OR EQUAL TO 4 FEET WIDE SHALL BE PAINTED WHERE INDICATED ON THE DRAWINGS.
  - STREET NAME SIGNS SHALL BE PER USDCCA STD. DWG. NO. 250.



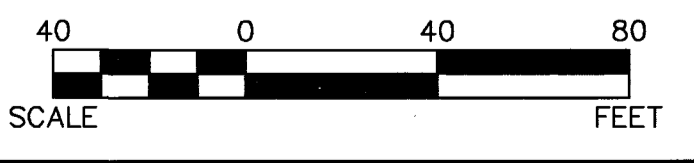
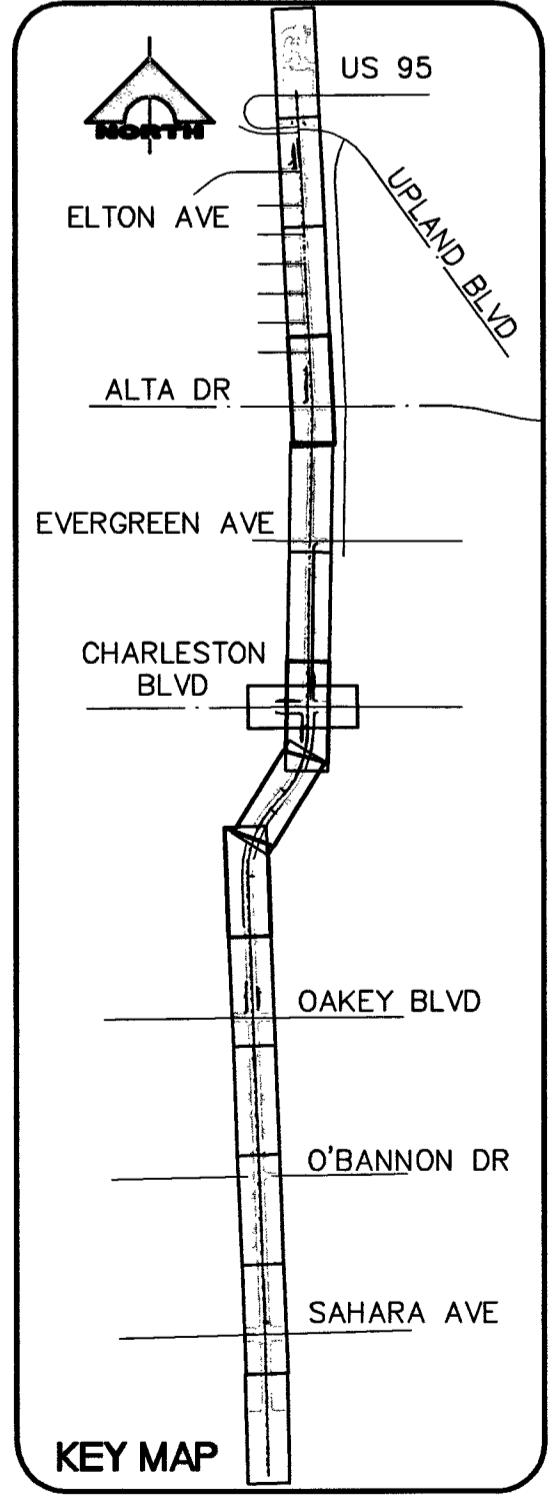
MATCHLINE "J" 379+25.00



**FAST**  
 Call before you UnderGround.  
 1-702-432-5300

AVOID HITTING OVERHEAD POWER LINES. IT'S COSTLY.  
**CALL BEFORE YOU DO OVERHEAD**  
 1-702-227-2929

Call before you Dig  
 Avoid cutting underground utility lines. IT'S COSTLY.  
**Call**  
 1-800-227-2800



REVISIONS  
 6/19/12 REVISED ON-SITE STRIPING

DEPARTMENT OF PUBLIC WORKS  
 CAPITAL PROJECT MANAGEMENT

CITY ENGINEER: DAVID POWERS, P.E., PTOE  
 PROGRAM MANAGER: JEREMY LEAVITT, P.E.  
 DESIGNED BY: MDM  
 DRAWN BY: JAS  
 CHECKED BY: TAM

DATE: 9/21/11

TITLE: JONES BOULEVARD IMPROVEMENTS  
 SAHARA AVENUE TO US 95  
 SHEET: SIGNING AND STRIPING PLAN  
 "J" 369+75.00 TO "J" 387+00.00

Sheet  
**ST-07**  
 99 of 101  
 DRAWING NO. 107V5627

APPROVED: [Signature]  
 DATE: 12/21/12

TRANSER NO. 98800 BID NO. 117730.05