

REMOVE AND REPLACE FRACTURED PIPE FROM "V" 66+17± TO "V" 66+22± (5 LF)

# VALLEY VIEW BOULEVARD

REMOVE AND REPLACE SAGGED PIPE FROM "V" 71+16± TO "V" 71+32± (16 LF)

REMOVE AND REPLACE FRACTURED PIPE FROM "V" 72+57± TO "V" 72+73± (16 LF)

**SNWA NOTES**

- CONTRACTOR SHALL FIELD LOCATE AND PROTECT ALL SNWA/SNWS APPURTENANCES INCLUDING, BUT NOT LIMITED TO AV/AR, ACCESS MAINWAYS AND CATHODIC PROTECTION SYSTEMS. ALL ABOVE GROUND STRUCTURES AND AT GRADE STRUCTURES MUST BE ADJUSTED TO NEW GRADE AT CONTRACTOR'S EXPENSE. CATHODIC PROTECTION TEST STATIONS, RECTIFIERS, AND AV/AR'S MUST BE RELOCATED TO THE SIDEWALK PER SNWA STANDARDS AT THE CONTRACTOR'S EXPENSE. CONTRACTOR TO NOTIFY SOUTHERN NEVADA WATER AUTHORITY, DEVELOPMENT PLAN REVIEW, AT (702) 862-3444 AT LEAST 48 HOURS PRIOR TO CONSTRUCTION ACTIVITY.

**UTILITY NOTES**

- EXISTING UTILITY LOCATIONS SHOWN HEREON ARE APPROXIMATE ONLY. IT SHALL BE THE CONTRACTOR'S RESPONSIBILITY TO DETERMINE THE EXACT VERTICAL AND HORIZONTAL LOCATION OF ALL EXISTING UNDERGROUND UTILITIES PRIOR TO COMMENCING CONSTRUCTION. NO REPRESENTATION IS MADE THAT ALL EXISTING UTILITIES ARE SHOWN HEREON. THE ENGINEER ASSUMES NO RESPONSIBILITY FOR UTILITIES NOT SHOWN IN THEIR PROPER LOCATION.
- SEE SPECIFICATIONS FOR PIPE REPLACEMENT REQUIREMENTS.
- CONTRACTOR TO MAINTAIN AND BYPASS SEWER FLOWS IN ACCORDANCE WITH SPECIFICATIONS.
- CONTRACTOR TO VERIFY LOCATION OF SERVICE LATERALS.
- LIMITS OF PIPE REMOVAL TO BE VERIFIED IN FIELD BY ENGINEER.

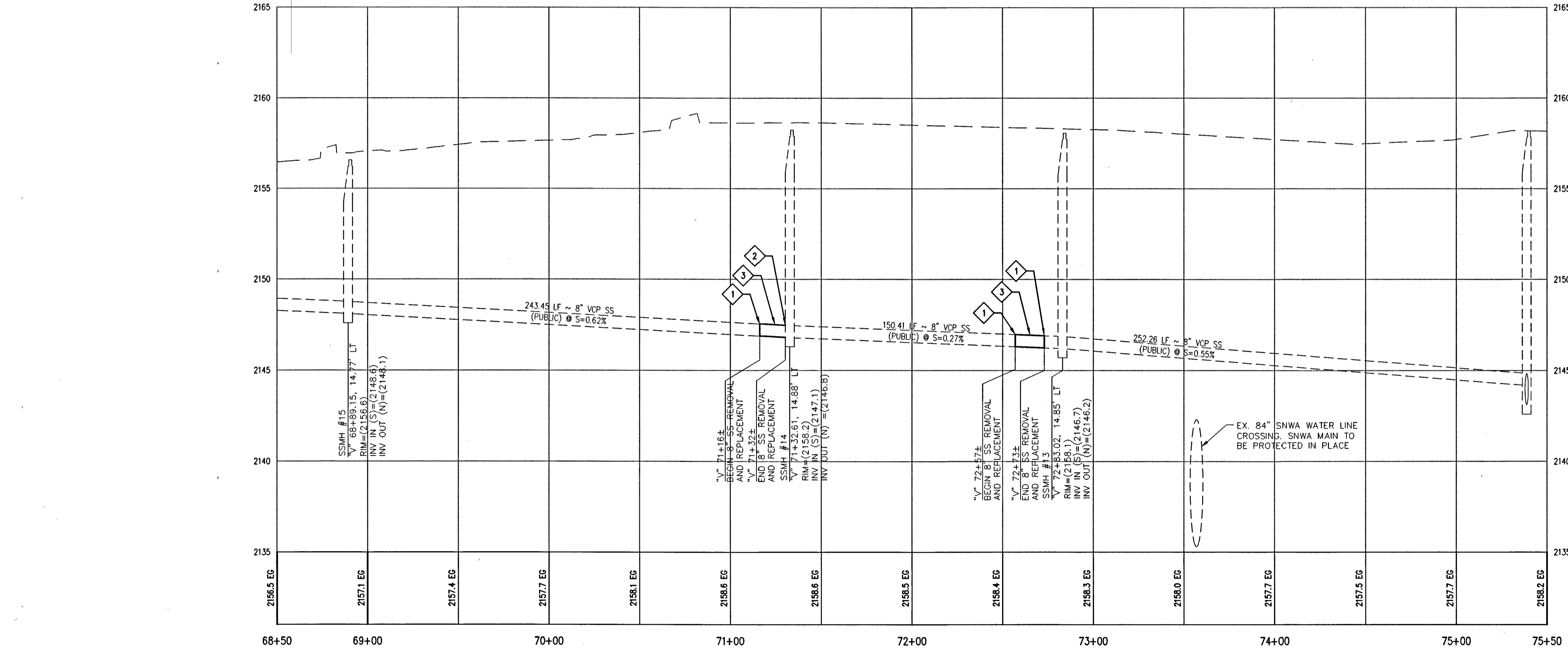
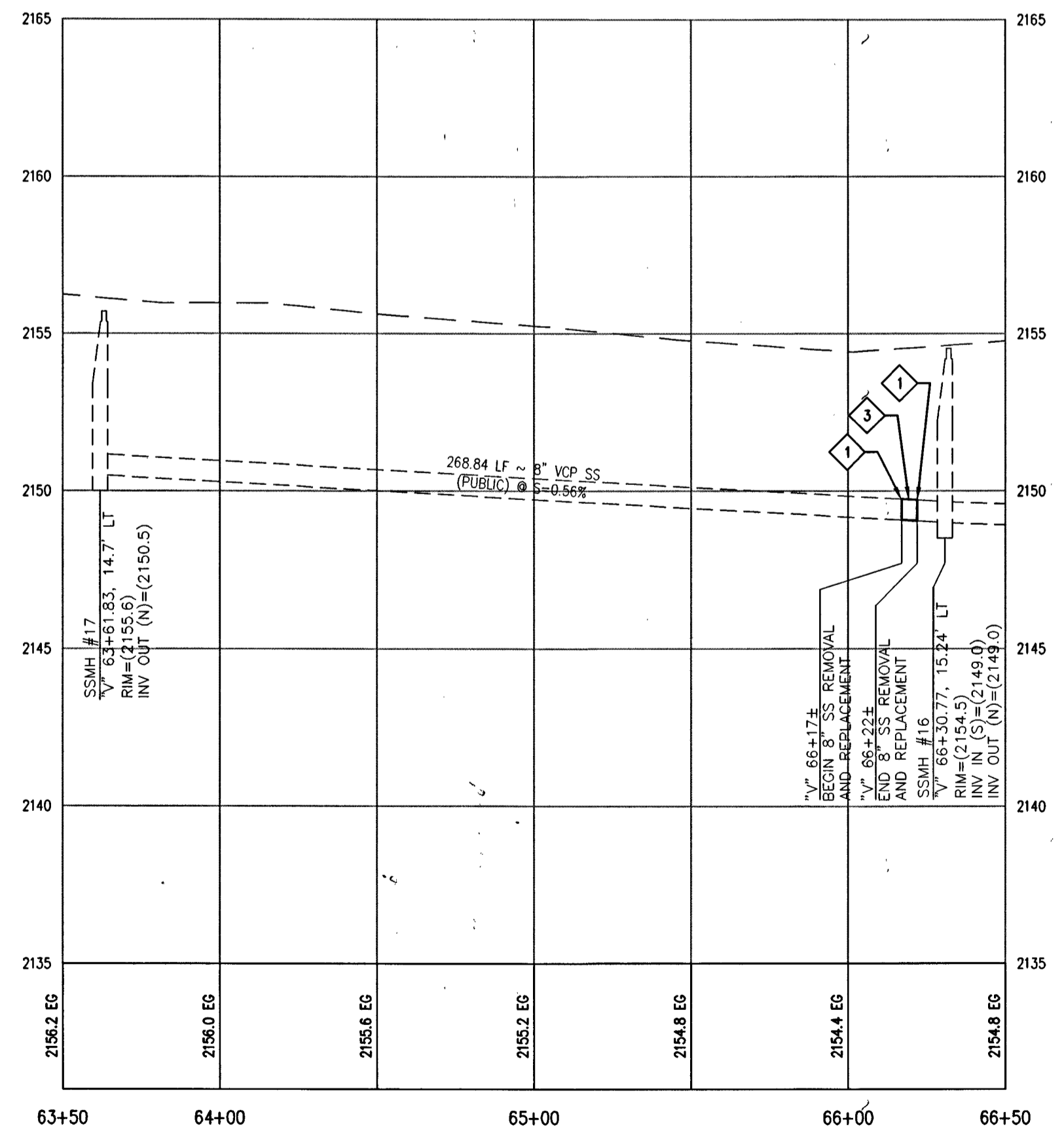
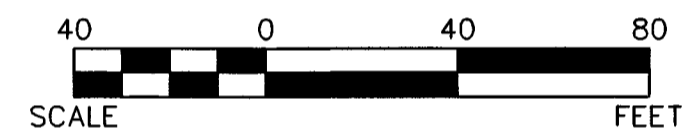
**SEWER CONSTRUCTION NOTES**

- CONNECT TO EXISTING VCP SS PER DCSWCS STD. DWG. NO. SD-33
- CONNECT TO EXISTING SANITARY SEWER MANHOLE PER DCSWCS STANDARDS
- INSTALL 8" SDR35 SS MAIN (PUBLIC)

**SNWA APPROVAL:**

*Heidi A. Dexheimer* 11/21/11  
SOUTHERN NEVADA WATER AUTHORITY DATE

SNWA APPROVAL IS VALID FOR ONE (1) YEAR FROM THE SIGNATURE DATE. IF CONSTRUCTION WITHIN THE EASEMENT OR RESTRICTED PIPE SAFETY ZONE IS NOT COMPLETE, PLANS MUST BE RESUBMITTED TO SNWA FOR APPROVAL.



NO.	DATE	DESCRIPTION	APP'D.

**DEPARTMENT OF PUBLIC WORKS**  
**CAPITAL PROJECT MANAGEMENT**

CITY ENGINEER: DAVID BOWERS, PE, PTOE  
PROGRAM MANAGER: JEREMY LEAVITT, P.E.

DESIGNED BY: MOM  
DRAWN BY: DSP  
CHECKED BY: TAM

DATE: 9/21/11

VALLEY VIEW BOULEVARD - DESERT IN RD TO BONANZA RD

**VALLEY VIEW BOULEVARD**  
**DESERT IN RD TO BONANZA RD**

**SANITARY SEWER**  
**REPAIR PLAN II**

TITLE: SHEET:

SEAL  
ENGINEER  
*Heidi A. Dexheimer*  
HEIDI A. DEXHEIMER  
EX. 12-31-12  
CIVIL  
STATE OF NEVADA  
NO. 14260  
KYLE W. JOHNSON

Sheet  
**UT-13**  
73B of 101  
DRAWING NO.  
107V5627