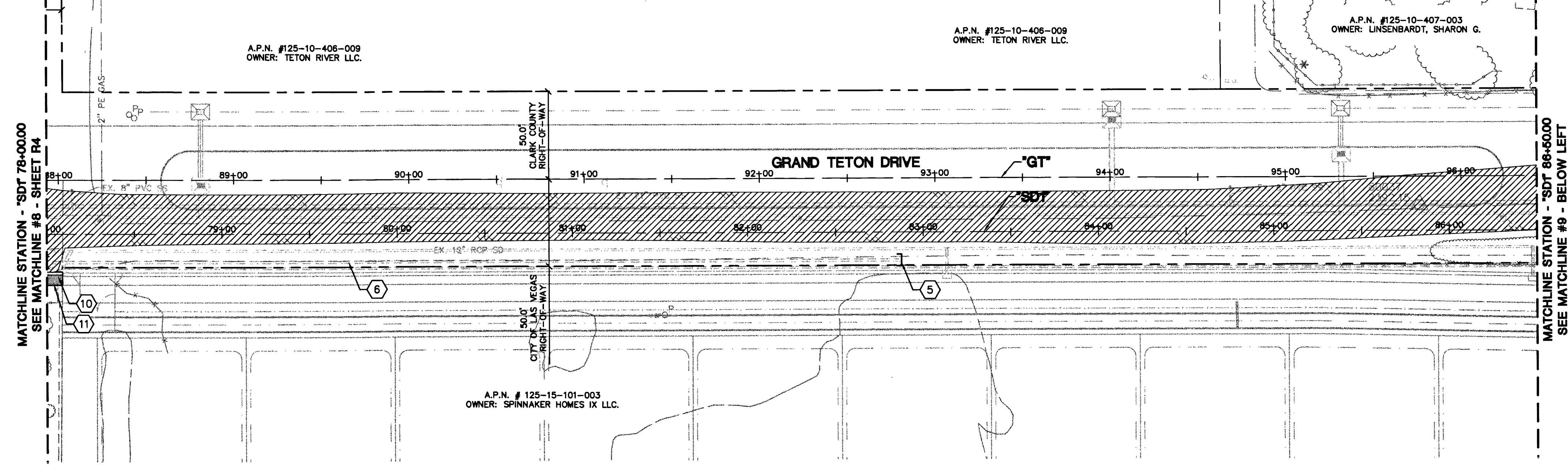
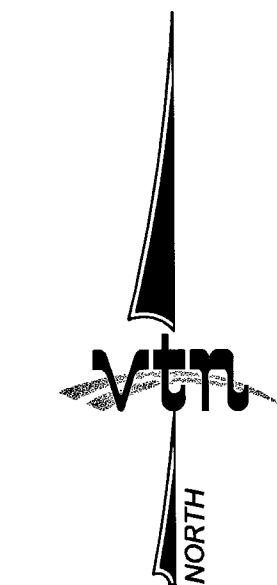
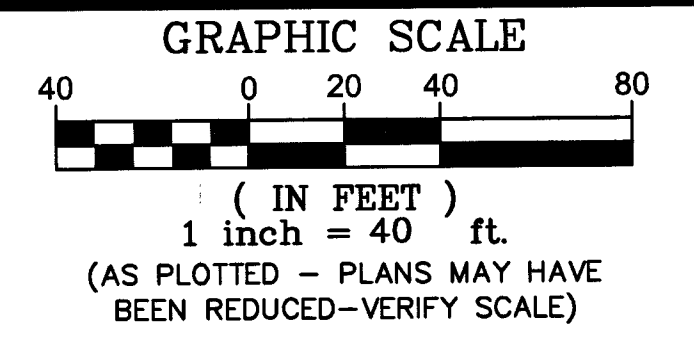
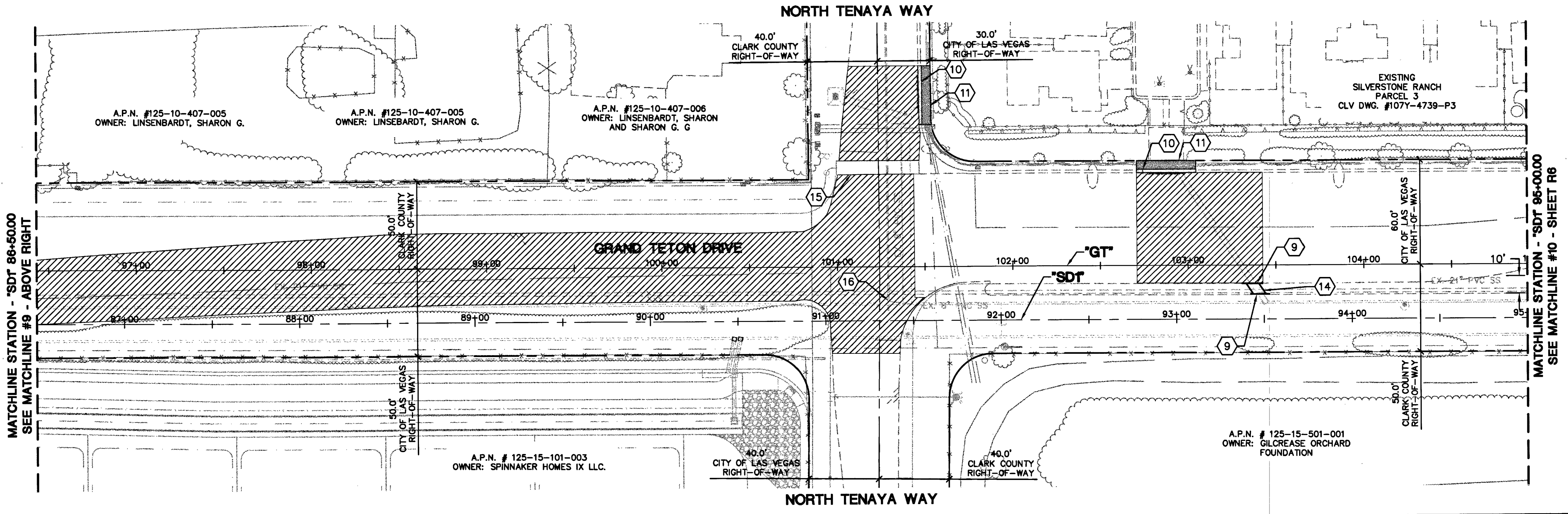


NORTH PIONEER WAY



- LEGEND**
- LIMITS OF AC REMOVAL AND REPLACEMENT
  - LIMITS OF CURB AND GUTTER REMOVAL
  - LIMITS OF SIDEWALK REMOVAL

- REMOVAL NOTES:**
- 1 REMOVE EXISTING STORM DRAIN DROP INLET
  - 2 REMOVE EXISTING STORM DRAIN MANHOLE
  - 3 REMOVE EXISTING STORM DRAIN PIPE
  - 4 REMOVE AND REPLACE EXISTING STORM DRAIN MANHOLE
  - 5 BRICK AND MORTAR EXISTING STORM DRAIN SEE DETAIL SHEET DT3
  - 6 ABANDON EXISTING STORM DRAIN IN PLACE AND FILL WITH CONCRETE SLURRY
  - 7 EXISTING STORM DRAIN FACILITY TO REMAIN. PROTECT IN PLACE
  - 8 ABANDON EXISTING STORM DRAIN BLEEDER AND FILL WITH CONCRETE SLURRY
  - 9 REMOVE CONCRETE MEDIAN CURB
  - 10 REMOVE CONCRETE CURB AND GUTTER
  - 11 REMOVE CONCRETE SIDEWALK
  - 12 REMOVE EXISTING CONCRETE FLUME
  - 13 REMOVE EXISTING SD BUBBLER
  - 14 REMOVE AND SALVAGE MEDIAN LANDSCAPING TREATMENT
  - 15 REMOVE CONCRETE CROSS GUTTER (SPANDREL TO REMAIN)
  - 16 REMOVE EXISTING 8" SS STUB AND PLUG AT MANHOLE
  - 17 REMOVE EXISTING STAMPED CONCRETE EQUESTRIAN PATH AT NEAREST JOINT LINE.
  - 18 REMOVE EXISTING 12'X5' RCB (REFER TO SHEETS DT4 AND S3)
  - 19 REMOVE EXISTING FLOODWALL (REFER TO SHEET GP7)
  - 20 REMOVE AND SALVAGE LANDSCAPING TREATMENT. COORDINATE WITH PINE MEADOWS H.O.A.



ALL EXISTING FACILITIES SHALL BE PROTECTED IN PLACE UNLESS OTHERWISE NOTED

**UTILITY NOTE:**  
 ALL EXISTING UTILITY LOCATIONS SHOWN HEREON ARE APPROXIMATE ONLY. IT SHALL BE THE CONTRACTORS RESPONSIBILITY TO DETERMINE THE EXACT VERTICAL AND HORIZONTAL LOCATION OF ALL EXISTING UNDERGROUND UTILITIES PRIOR TO COMMENCING CONSTRUCTION. NO REPRESENTATION IS MADE THAT ALL UTILITIES ARE SHOWN HEREON. THE ENGINEER ASSUMES NO RESPONSIBILITY FOR UTILITIES NOT SHOWN IN THEIR PROPER LOCATION. THE DEPTH BELOW GRADE OF THE VARIOUS UTILITIES DEPICTED ON THE PLANS VARIES THROUGHOUT THE PROJECT AREA. THE CONTRACTOR SHALL EXERCISE EXTREME CARE WHERE EXCAVATING AND GRADING THE SUBBASE IN THE VICINITY OF UTILITIES TO AVOID DAMAGE TO THE LATTER.

CLARK COUNTY PUBLIC WORKS  
 CONST. MGMT. DEVELOPMENT  
**APPROVED FOR PERMITTING**  
 NIGHT WORK - YES  NO   
 ENCROACHMENT PERMIT # 1225364  
 BY: DATE: 7/3/13

Avoid overhead power line contact it's costly.

**Call before you Overhead**

1-702-227-2929  
 NV ENERGY ENVIRONMENT AND SAFETY SERVICES DEPARTMENT

Call before you Dig  
 Avoid cutting underground utility lines. It's costly.

**Call 811**

 <b>PUBLIC WORKS DEPARTMENT</b> 333 W. LAS VEGAS BLVD LAS VEGAS, NV 89106 702-227-6327	5/7/2013 DAB DESIGNED BY:	5/7/2013 VLN CHECKED BY:	5/7/2013 CKH PROJECT NO:	SCALE: HORIZ. 1"=40' VERT. N/A
	GRAND TETON REMOVAL SHEETS "SDT 78+00 TO "SDT 95+00 LAS VEGAS WASH MIDDLE BRANCH GRAND TETON STORM DRAIN DURANGO DR. TO RAINBOW BLVD.	DRAWN BY:	CHECKED BY:	PROJECT NO:
 <b>CHAD K. HALVERSON</b> CIVIL No. 13981 5/6/13	SHEET <b>R5</b> 10 OF 78 SHEETS DRAWING NO. 731-89	REVISION REV. DATE BY	2727 SOUTH RAINBOW BOULEVARD LAS VEGAS, NV 89146-5148 P.O. BOX 678 LAS VEGAS, NV 89102-0678 FAX (702) 362-2597 WWW.VPNV.COM	