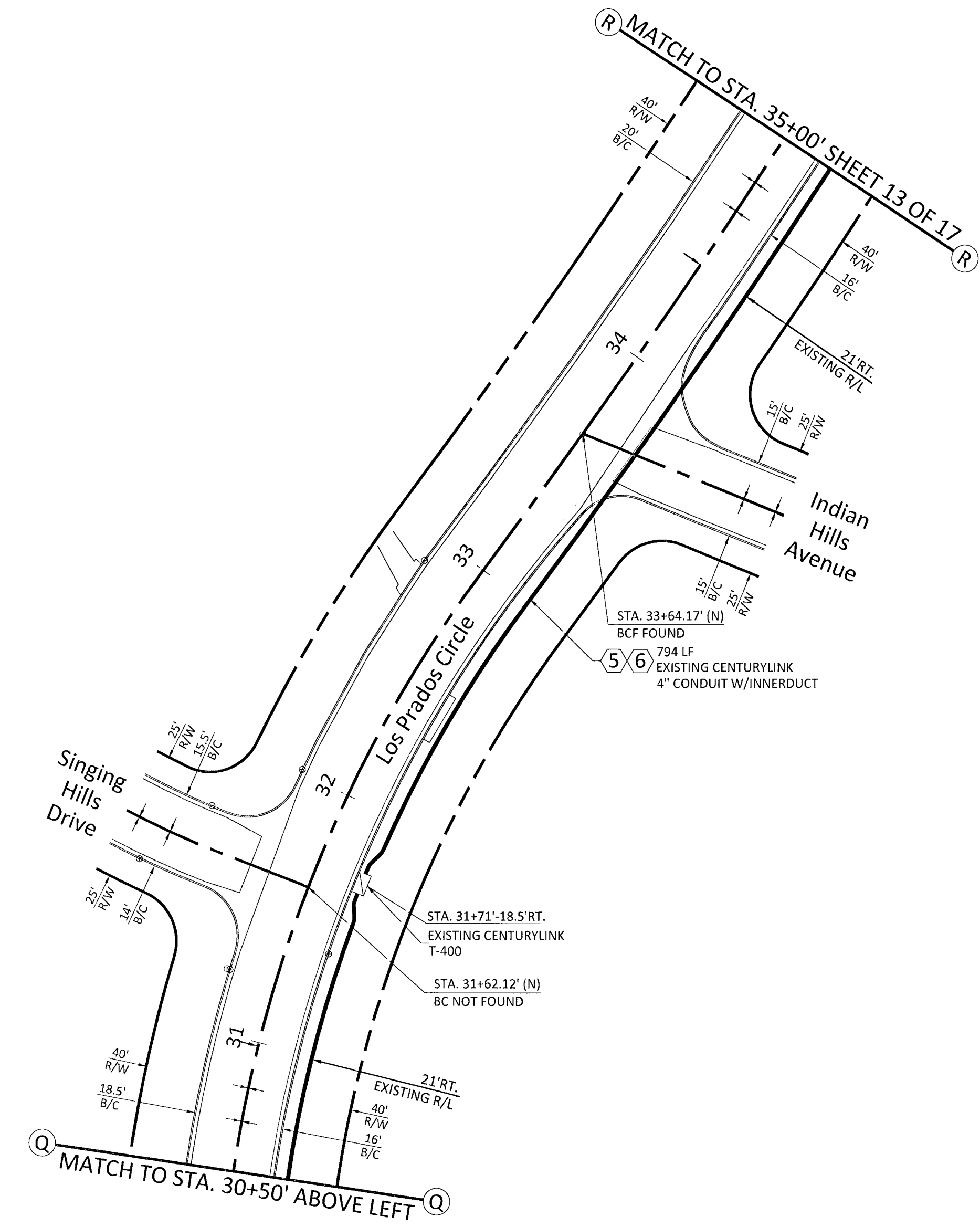
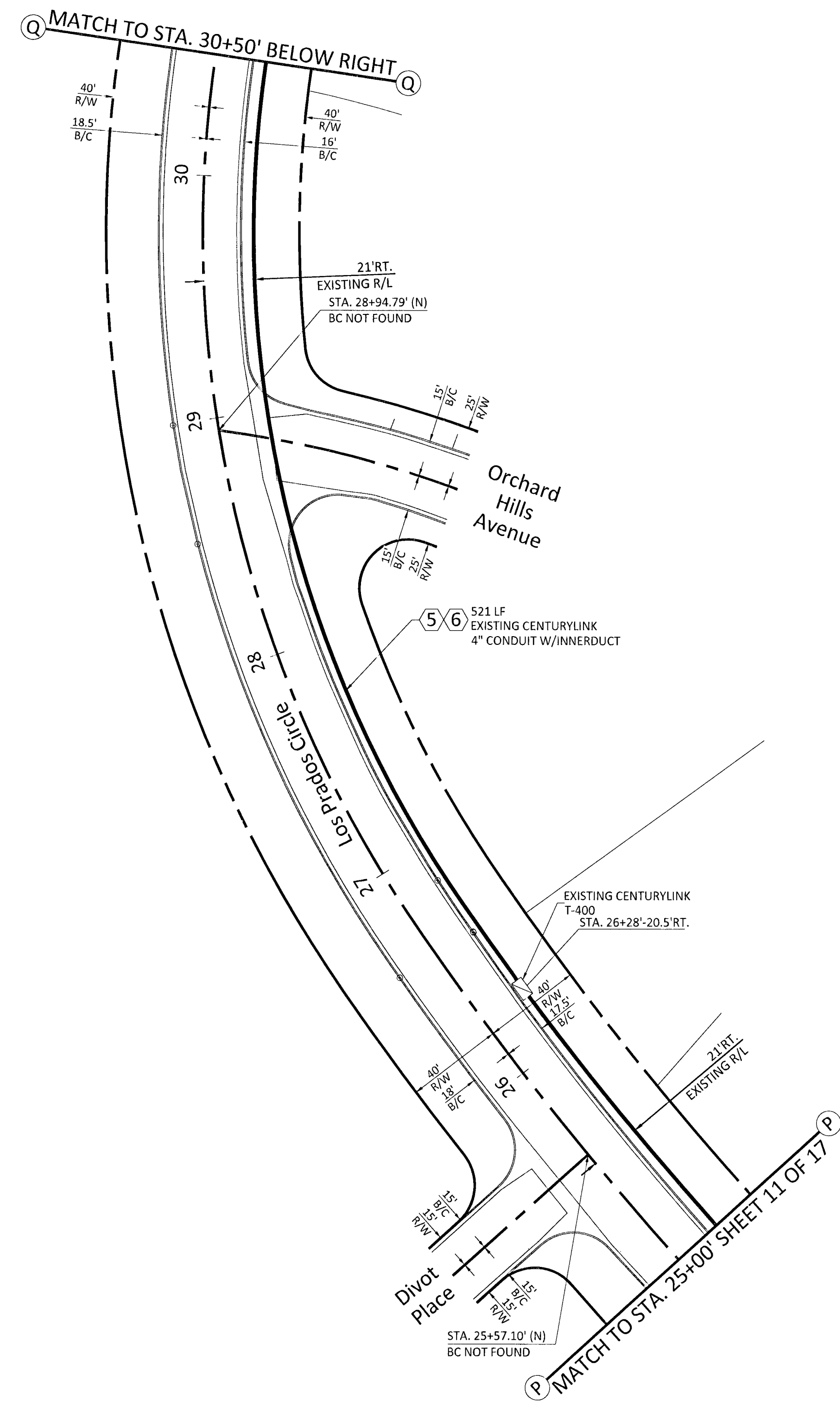


EXISTING CONDUIT: 1,315'



- CONSTRUCTION NOTES**
- INSTALL 1-2" SCH-40 CONDUIT. W/144CT FIBER.
 - BORE UNDER EXISTING SIDEWALK.
 - R&R SIDEWALK.
 - INSTALL T-200 UTILITY BOX.
 - INSTALL 144CT FIBER
 - EXISTING 4" CONDUIT W/INNERDUCT
 - EXISTING 4" CONDUIT PLACE 1-1" INNERDUCT

Contact: Dave Barbee
 American Fiber Solutions
 5735 Fort Apache Suite A
 Las Vegas, NV 89148
 PHONE: (702)273-1125

UTILITY NOTES:

UTILITY LOCATIONS SHOWN HEREON ARE APPROXIMATE ONLY. IT SHALL BE THE CONTRACTORS RESPONSIBILITY TO DETERMINE THE EXACT HORIZONTAL AND VERTICAL LOCATION OF ALL EXISTING UNDERGROUND UTILITIES PRIOR TO COMMENCING CONSTRUCTION. NO REPRESENTATION IS MADE THAT ALL EXISTING UTILITIES ARE SHOWN HERON. THE ENGINEER ASSUMES NO RESPONSIBILITY FOR UTILITIES NOT SHOWN OR UTILITIES NOT SHOWN IN THEIR PROPER LOCATION.

AVOID CUTTING UNDERGROUND UTILITY LINES. IT'S COSTLY.

Call before you Dig.

1-800-227-2600

UNDERGROUND SERVICE (USA)

AVOID HITTING OVERHEAD POWER LINES. IT'S COSTLY.

CALL BEFORE YOU DO OVERHEAD

1-702-227-2929

AVOID HITTING UNDERGROUND TRAFFIC SIGNAL AND STREET LIGHT AND STREET LIGHT SYSTEM CONDUITS IT'S COSTLY CALL BEFORE YOU DO UNDERGROUND

Call before you Under Ground

1-702-432-5200

FREWAY AND ARTERIAL SYSTEM OF TRANSPORTATION

LEGEND:

	INDICATES EX. UTILITIES & OH CABLE
	PROPOSED 2, 3, 4 & 6" PVC, SCHEDULE 40
	PROPOSED FIBER
	PROPOSED 1 1/4" HDPE DUCT
	INDICATES CENTER LINE
	INDICATES RIGHT-OF-WAY
	PROPOSED PULLBOX 3'x5'x4'6"
	PROPOSED PULLBOX 2'6" x 4' x 3'
	PROPOSED PULLBOX 30" x 48" x 36"
	TERMINAL CABINET 36" x 36" x 6"
	TERMINAL CABINET 24" x 24" x 6"
	TERMINAL CABINET 18" x 24" x 6"
	CENTURYLINK MANHOLE
	3/4" PLYWOOD BACKBOARD TREATED WITH A FIRE RETARDANT PAINT OR SEALER. BACKBOARDS SMALLER THAN 4'x8' SHOULD BE MOUNTED 40" ABOVE THE FLOOR
	#6 COPPER GROUND WIRE ATTACHED TO A POWER MGN.

CONSTRUCTION NOTES:

COORDINATE CONSTRUCTION WITH AMERICAN FIBER SOLUTIONS, ALL UG CONDUIT TO BE EQUIPPED WITH LOCATE WIRE. MAINTAIN A MINIMUM OF 36" (PLACE BORE PITS AS NECESSARY)

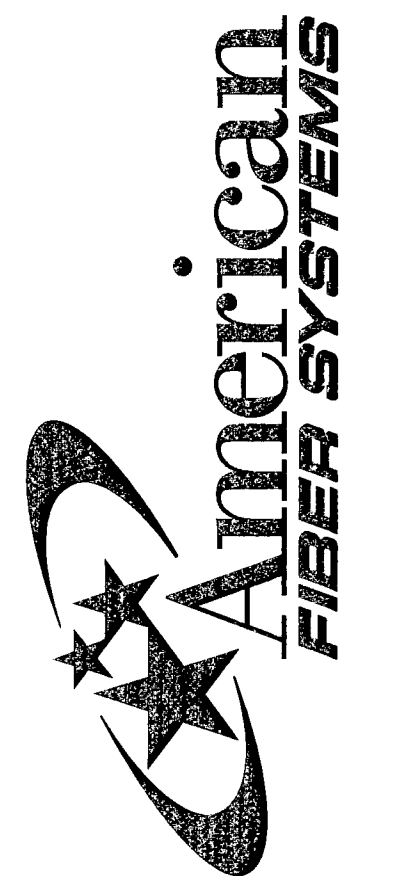
CITY OF LAS VEGAS PUBLIC WORKS PERMIT REQUIRES*

DEVELOPER/CONTRACTOR SHALL OBTAIN A CITY OF LAS VEGAS (CLV) PERMIT BEFORE ANY EXCAVATION WORK WITHIN CITY OF LAS VEGAS RIGHT-OF-WAY

AMERICAN FIBER SOLUTIONS INSPECTOR WILL VERIFY CITY OF LAS VEGAS PERMIT FOR WORK DONE WITHIN (CLV) RIGHT-OF-WAY

INSPECTOR: _____ DATE: _____

SCALE:	1" = 40'	DESIGN BY:	DRAWN BY:	REVIEW BY:	M.O.	DATE	APPROVAL
PROJECT NAME:	NORTHWEST RING (SECTION 1CLV)						
PROJECT LOCATION:	W Lone Mintr. Rd & N Los Prados Blvd						
PROJECT NUMBER:	8283 CLV						
REV. #	AC	BY	DATE	DESCRIPTION			
REV. 1			10-14-13	REV PER CLV COMMENTS			



SHEET
12
 12 of 17 SHEETS