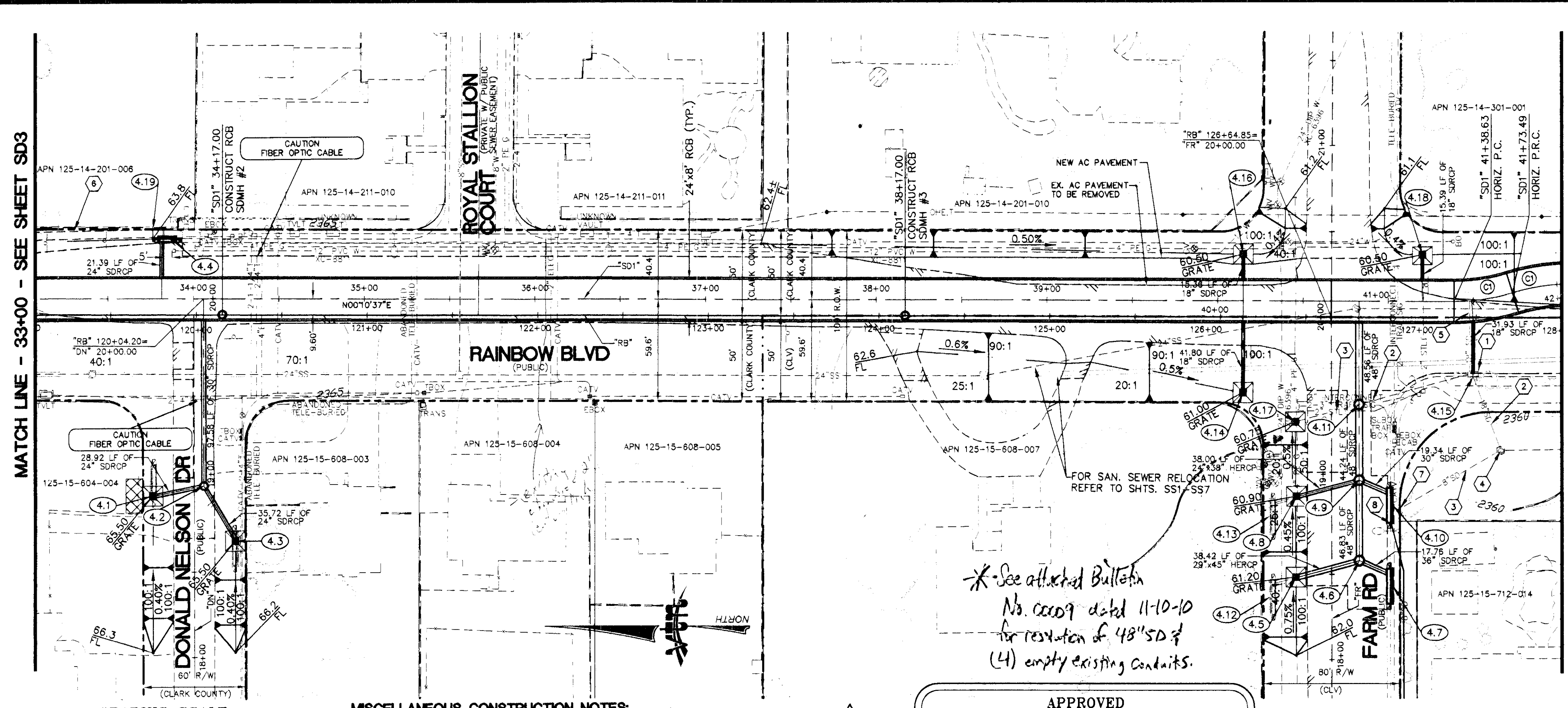


Clark County Inspection # 155-1610

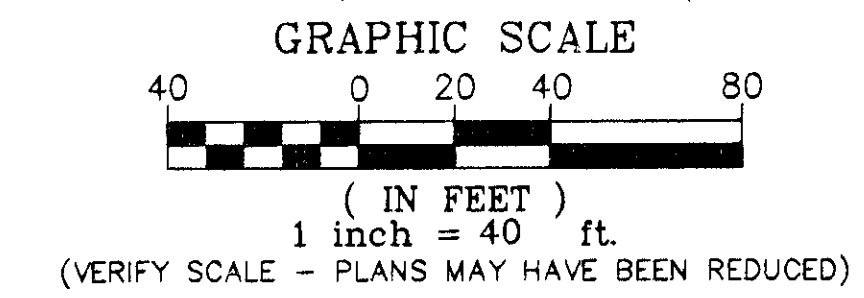
Encumbrance Part # 09-9781

MATCH LINE - 33+00 - SEE SHEET SD3

MATCH LINE - 42+00 - SEE SHEET SD5



- STORM DRAIN CONSTRUCTION ITEMS:**
- 4.1 "DN" 18+94.25, 24.19' LT. INSTALL MODIFIED NDOT TYPE "2B" D.I. W/ CONC. APRON - SEE LATERAL 7 ON SD9 (FUTURE 20' TYPE DM2 D.I. LOCATION-BY OTHERS)
 - 4.2 "DN" 19+00.00, 5.65' RT. INSTALL MODIFIED NDOT TYPE 4 SDMH #13. RIM = 2365.96. SEE DETAIL ON D6 - SEE LATERAL 8 ON SD9
 - 4.3 "DN" 18+67.81, 23.94' RT. INSTALL MODIFIED NDOT TYPE "2B" D.I. W/ CONC. APRON - SEE LATERAL 8 ON SD9 (FUTURE 20' TYPE DM2 D.I. LOCATION-BY OTHERS)
 - 4.4 "RB" 119+82.95, 45.00' LT. INSTALL 12.5' TYPE "DM2" D.I. W/ 2.5' SWEEPER - SEE LATERAL 25 ON SD12
 - 4.5 "DN" 18+48.38, 20.97' LT. INSTALL MODIFIED NDOT TYPE "2B" D.I. W/ CONC. APRON - SEE LATERAL 10 ON SD9
 - 4.6 "FR" 18+57.92, 16.26' RT. INSTALL MODIFIED NDOT TYPE 4 SDMH #14. RIM = 2361.54. SEE DETAIL ON D6 - SEE LATERAL 10 ON SD9 AND LATERAL 11 ON SD10
 - 4.7 "FR" 18+43.16, 34.34' RT. INSTALL 22.5' TYPE "DM2" D.I. W/ 2.5' SWEEPER - SEE LATERAL 10 ON SD9
 - 4.8 "DN" 18+95.32, 20.56' LT. INSTALL MODIFIED NDOT TYPE "2B" D.I. W/ CONC. APRON - SEE LATERAL 12 ON SD10
 - 4.9 "FR" 19+04.75, 16.26' RT. INSTALL MODIFIED NDOT TYPE 4 SDMH #15. RIM = 2361.38. SEE DETAIL ON D6 - SEE LATERAL 11 & 12 ON SD10
 - 4.10 "FR" 18+89.99, 34.55' RT. INSTALL 22.5' TYPE "DM2" D.I. W/ 2.5' SWEEPER - SEE LATERAL 12 ON SD10, CONNECT EX. 8" PVC SD (FROM WEST), TO BE FIELD LOCATED BY CONTRACTOR
 - 4.11 "FR" 19+48.98, 16.26' RT. INSTALL MODIFIED NDOT TYPE 4 SDMH #16. RIM = 2361.32. NDOT STD. DWG. R-4.3.2. SEE LATERAL 11 ON SD10
 - 4.12 "FR" 18+36.82, 35.00' LT. SEE LATERAL 10 ON SD9 (FUTURE 20' TYPE "DM" D.I. LOCATION-BY OTHERS)
 - 4.13 "FR" 18+83.64, 35.00' LT. SEE LATERAL 12 ON SD10 (FUTURE 20' TYPE "DM2" D.I. LOCATION-BY OTHERS)
 - 4.14 "FR" 19+56.03, 51.77' LT. INSTALL MODIFIED NDOT TYPE "2B" D.I. W/ CONC. APRON - SEE LATERAL 9 ON SD9
 - 4.15 "RB" 127+48.23, 34.86' RT. SEE LATERAL 13 ON SD10 CONNECT EX. SD DROP INLET INTO NEW RCP, CAP EXISTING RCP
 - 4.16 "FR" 20+36.81, 51.70' LT. INSTALL MODIFIED NDOT TYPE "2B" D.I. W/ CONC. APRON W/ 10:1 SLOPES ON APRON - SEE LATERAL 9 ON SD9
 - 4.17 "FR" 19+38.85, 21.17' LT. REPLACE EXISTING BEEHIVE GRATE WITH MODIFIED NDOT TYPE 2B GRATE W/ CONC. APRON
 - 4.18 "RB" 127+18.27, 37.00' LT. INSTALL MODIFIED NDOT TYPE "2B" D.I. W/ CONC. APRON - SEE LATERAL 28 ON SD13
 - 4.19 CONSTRUCT SIDEWALK FROM "RB" 119+74.53 TO "RB" 119+91.77, 45.00' LT. PER USDOCA STD. DWG. NO. 234
- * REFER TO SHEET D5 FOR APRON ELEVATIONS
- NOTE: ALL WATER APPURTENANCES MUST BE PROTECTED IN PLACE UNLESS OTHERWISE NOTED



- MISCELLANEOUS CONSTRUCTION NOTES:**
- 1 EX. SD DROP INLET - PROTECT IN-PLACE
 - 2 EX. SD PIPE - TO BE ABANDONED - BY CAPPING W/ 18" PVC CAP @ SDMH AND D.I.
 - 3 EX. SD PIPE - PROTECT IN-PLACE
 - 4 EX. SDMH - PROTECT IN-PLACE

- 5 EX. 18" HDPE TO BE REMOVED
- 6 EX. AC SIDEWALK - PROTECT IN PLACE
- 7 CUT & CAP 8" PVC SD @ D.I.
- 8 CONNECT EX. 8" PVC SD TO NEW DROP INLET

APPROVED

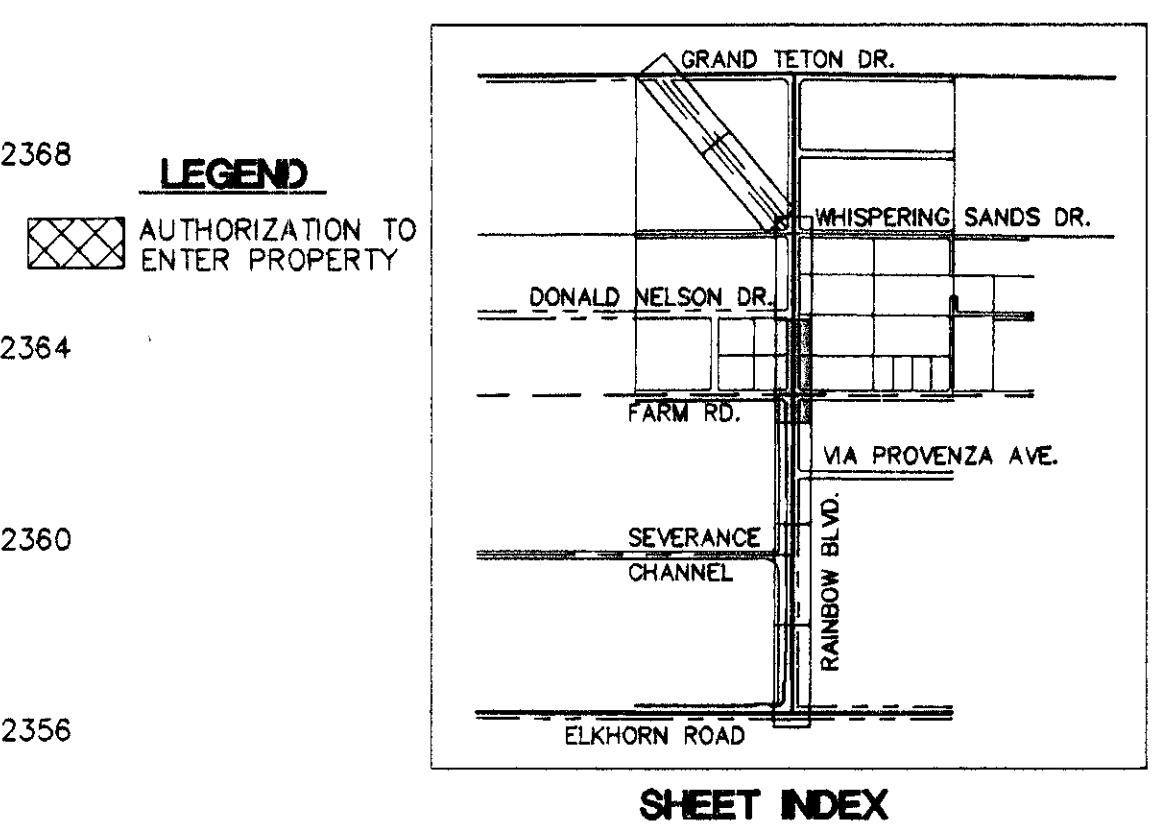
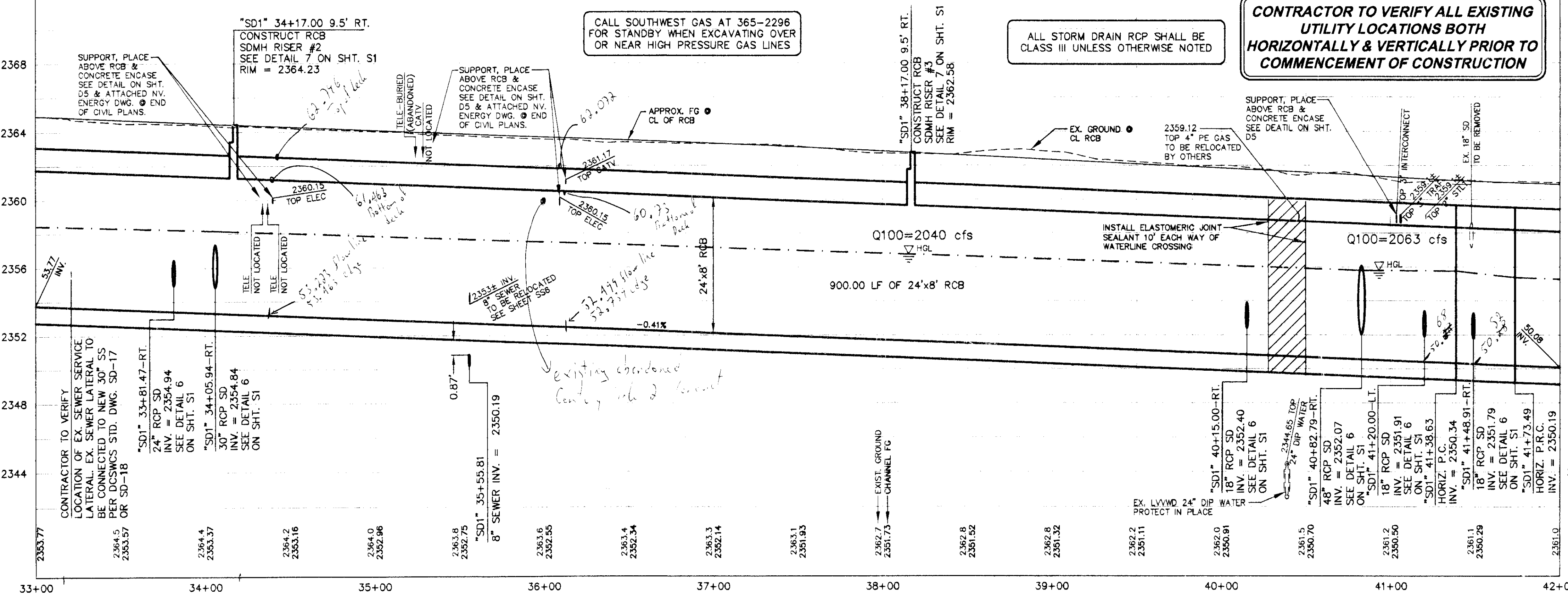
LAS VEGAS VALLEY WATER DISTRICT
PROJECT # 114800

DATE: 6-17-09

CURVE DATA

CURVE NO.	RADIUS	DELTA	LENGTH
1	118.00'	17°13'15"	34.87'

* See attached Bulletin No. 0009 dated 11-10-10 for restoration of 48" SD & (4) empty existing conduits.



Call before you Dig
1-702-227-2929
NV ENERGY ENVIRONMENT AND SAFETY SERVICES DEPARTMENT

Call before you Dig
Avoid cutting underground utility lines
811

PUBLIC WORKS DEPARTMENT
400 E. STEWART AVE.
LAS VEGAS, NV 89101
702-228-6272

STORM DRAIN PLAN & PROFILE STA. 33+00 TO STA. 42+00

LAS VEGAS WASH - MIDDLE BRANCH RAINBOW STORM DRAIN ELKHORN TO GRAND TETON

DRAWN BY: KAS
DESIGNED BY: DAB
CHECKED BY: KDS/TMM/CH
PROJECT NO: 114800
SCALE: HORIZ. 1"=40' VERT. 1"=4'

SHEET 15 OF 70 SHEETS
DRAWING NO. 731-87-1

DATE: JUNE 15, 2009
REVISED PER ADDENDUM NO. 1

116545