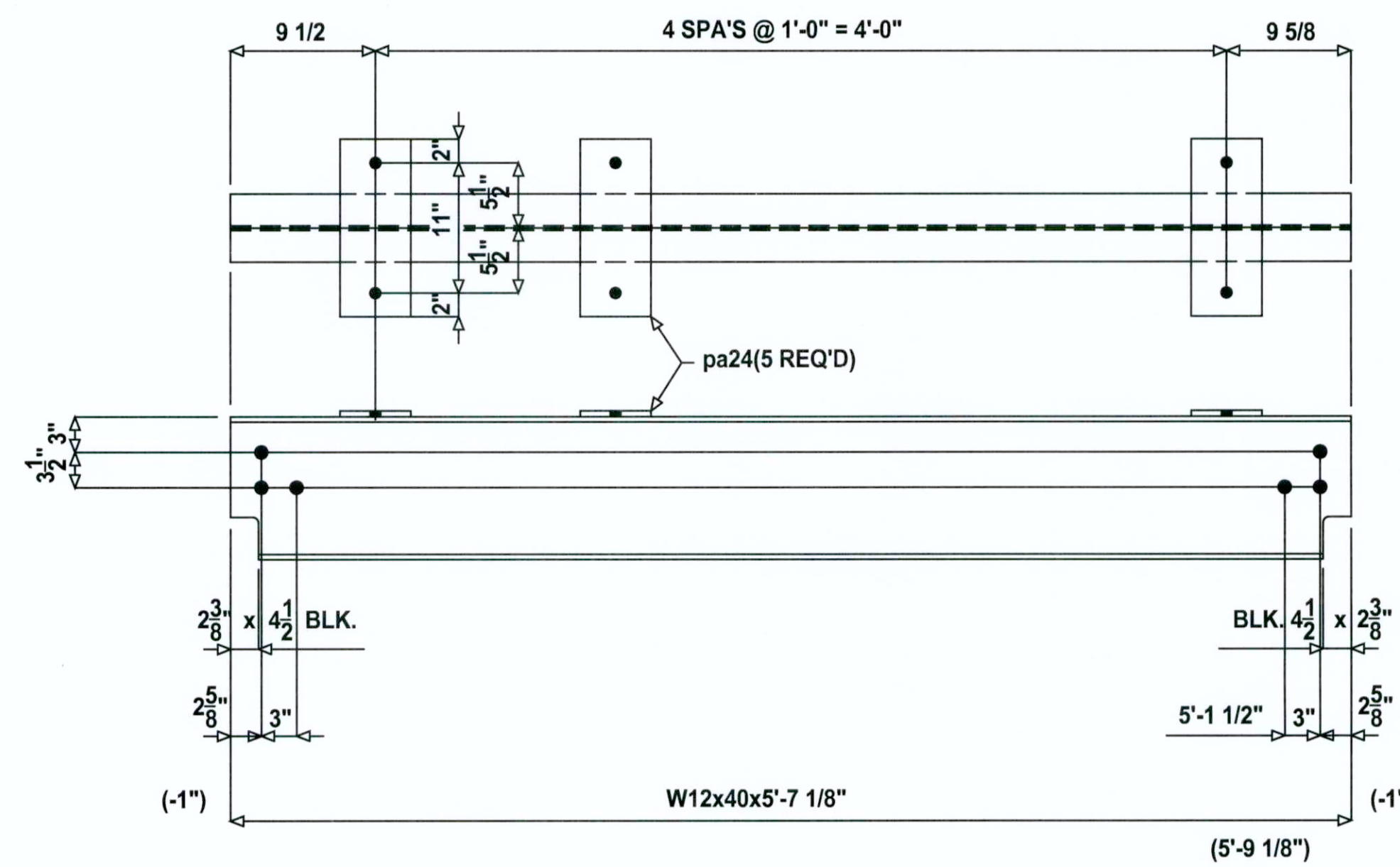
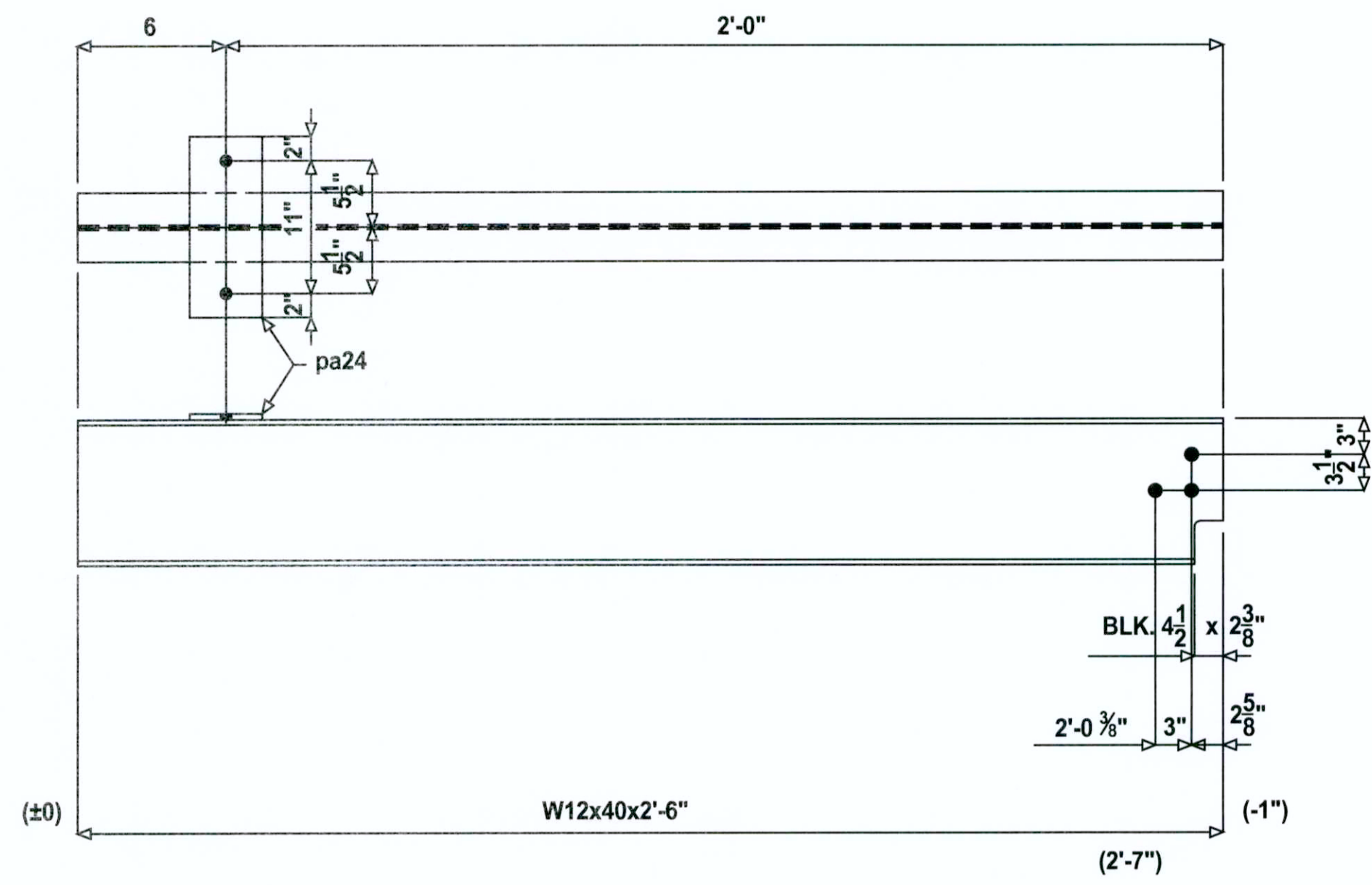


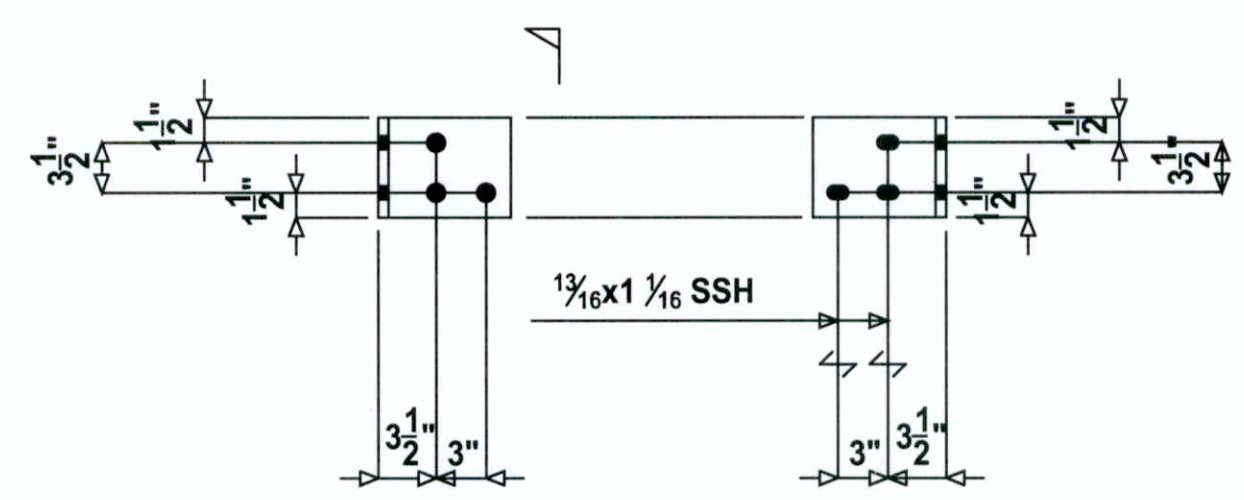
2 - BEAMS - 24A



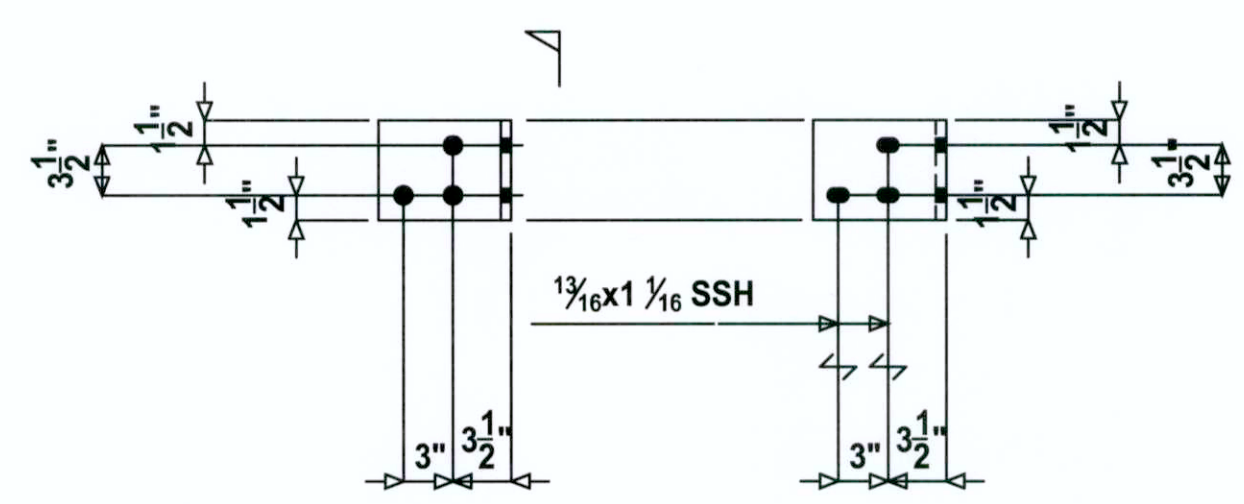
2 - BEAMS - 24B



2 - BEAMS - 24D



10 - ANGLES - 24F



10 - ANGLES - 24G

MARK	QTY	DESCRIPTION	FT	IN	REMARKS	WT
24A	2	W12x40	5	7 7/8	A992	
pa24	10	FB 1/2x6	1	3	A992	
24B	2	W12x40	5	7 7/8	A992	
pa24	10	FB 1/2x6	1	3	A992	
24D	2	W12x40	2	6	A992	
pa24	2	FB 1/2x6	1	3	A992	
24F	10	L8x8x5/8	0	6 1/2	A36	
24G	10	L8x8x5/8	0	6 1/2	A36	
		FIELD BOLT				
	54	3/4" A325 BOLTS	0	2 3/4		
	12	3/4" A325 BOLTS	0	2		
	44	3/4" SIMPSON TITEN HD	0	5		

APPROVAL AUTHORITY:
VERIFICATION OF DIMENSIONS, DETAILS, ETC
ARE REQUESTED WHERE INDICATED. IF EACH
VERIFICATION IS NOT NOTED OTHERWISE,
IT WILL BE ASSUMED TO BE CORRECT AS SHOWN.



QUALITY CERTIFICATION

PRINTS	NO.	DATE
SHOP		
FIELD		
GEN CONT		
PRJ MGR		
Q A		
1st APPR		
SHOP PRELIM		
EREC PRELIM		
D C PRELIM		
ENGR.		
PURCH.		

REFERENCE DRWG. / LOCATION	0 12/10	DESCRIPTION	For FAB
MATERIAL (UNLESS NOTED)	A36		
SURFACE PREPARATION			
SHOP PAINT	SHOP PRIMER U.N.		
SHOP CONNECTIONS/ELECTRODES	E70XX		
FIELD CONNECTIONS	HOLES (U.N.)	DATE	12/10
CHECKER	SS	DATE	12/10
PROJECT MANAGER	SSI		
JOB NO.		1014	DRWG. NO.
			24

THIS PROJECT SHALL BE ERECTED PER THE AISC THIRTEENTH EDITION CODE OF STANDARD PRACTICE SPECIFICALLY PARAGRAPH 7.14 AS FOLLOWS:

7.14 CORRECTION OF ERRORS
The correction of minor misfits by moderate amounts of reaming, grinding, welding or cutting, and the drawing of elements into line with drift pins, shall be considered to be normal erection operations. Errors that cannot be corrected using the foregoing means, or that require major changes in the member or Connection configuration, shall be promptly reported to the Owner's Designated Representatives for Design and Construction and the Fabricator by the Erector to enable the responsible entity to either correct the error or approve the most efficient and economical method of correction to be used by others.

No Backcharges Will Be Accepted Unless Approved In Writing By Steel Structures, Inc

AS BUILTS