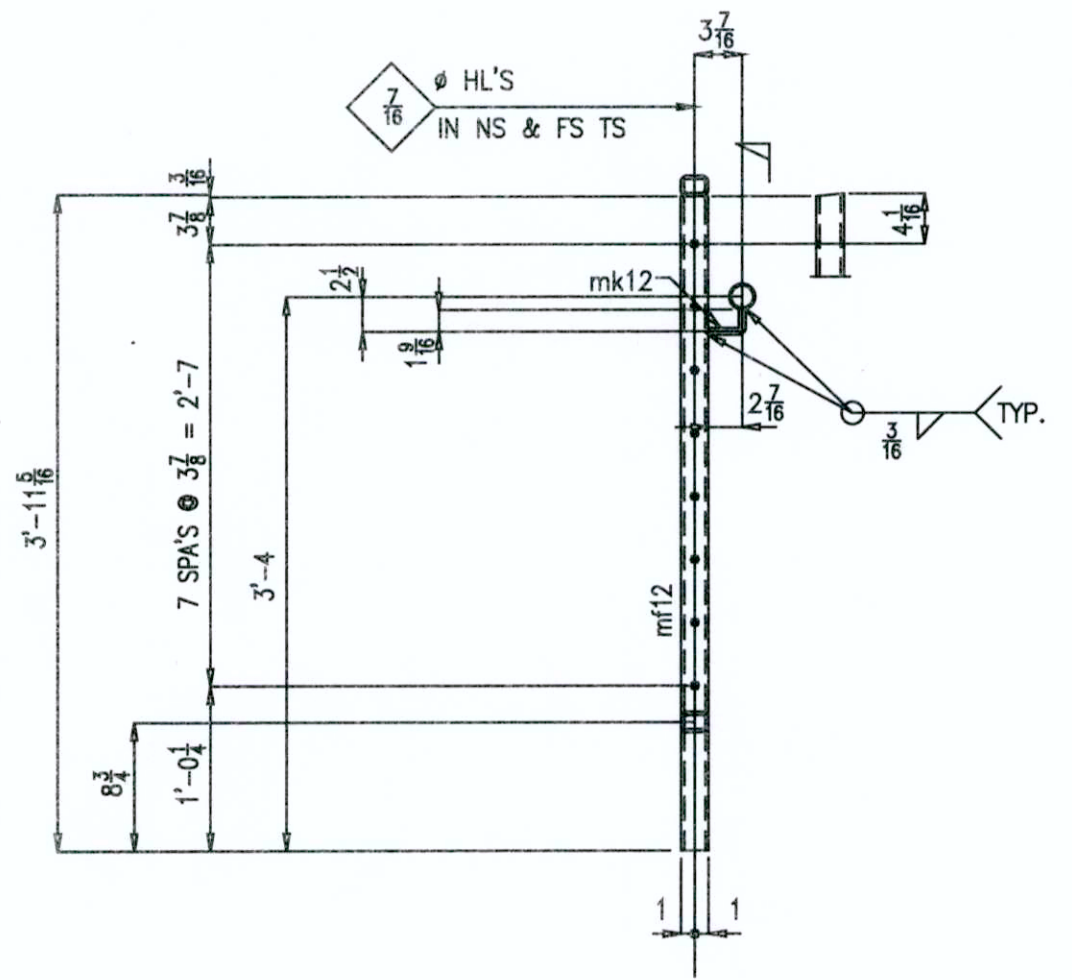
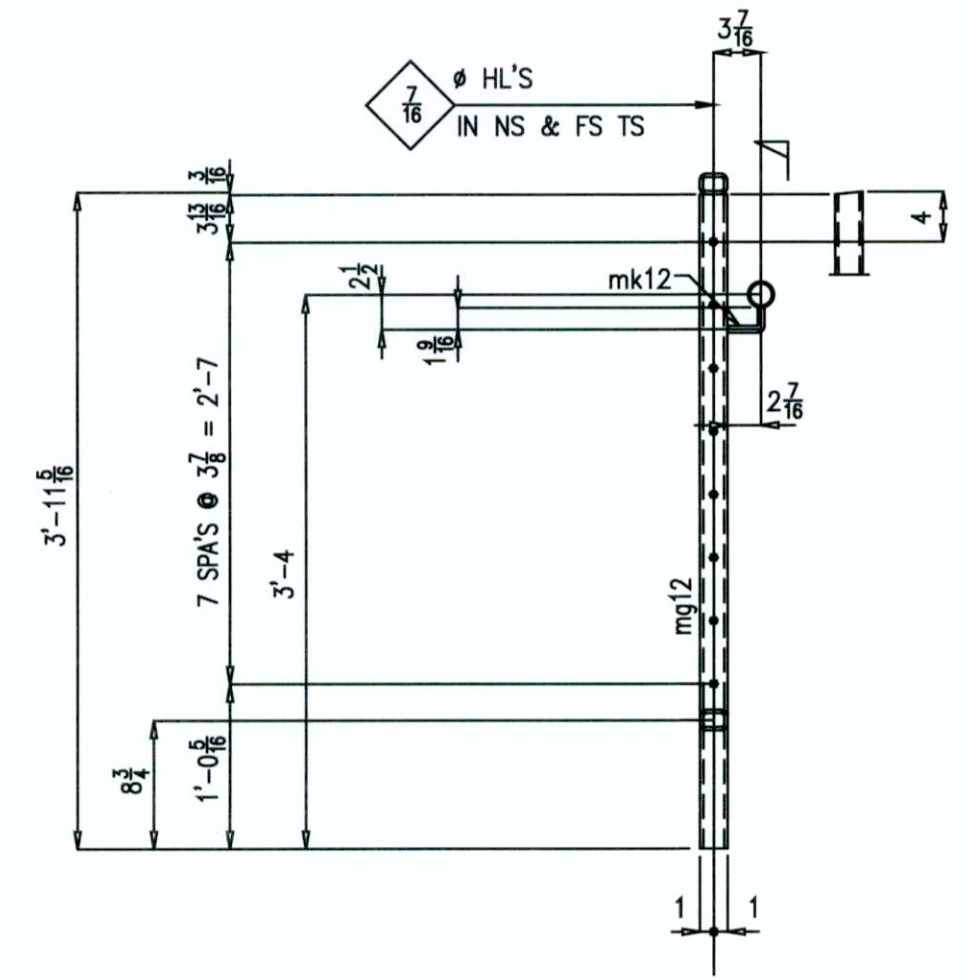


ONE - HANDRAIL - 12A

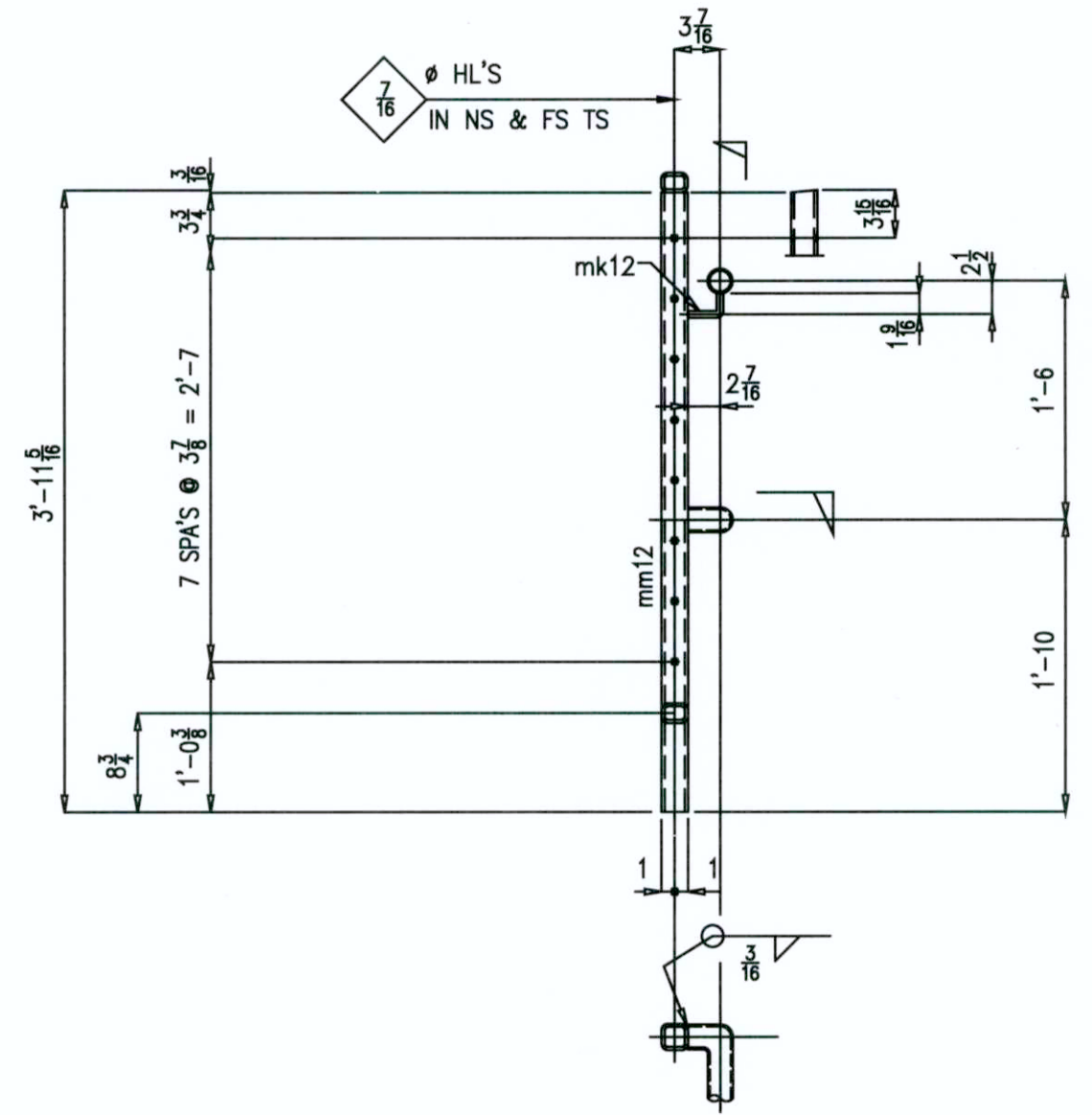
ONE - HANDRAIL - 12B



SECT A



SECT B



SECT C

MARK	QTY	DESCRIPTION	FT	IN	REMARKS	WT
12A	ONE	HANDRAIL				
ma12	ONE	HSS 2x1 1/2 x 1/4	13	2 9/16	A500 GR B	
md12	ONE	HSS 2x1 1/2 x 1/4	4	0 5/16	A500 GR B	
mf12	2	HSS 2x1 1/2 x 1/4	4	2 13/16	A500 GR B	
mh12	ONE	HSS 2x2 x 1/4	3	11 5/16	A500 GR B	
mk12	3	HSS 2x2 x 1/4	3	11 5/16	A500 GR B	
mp12	ONE	STD. PIPE 1 1/2"	16	0	A53 GR B, LIN. FT.	
ms12	4	RB 5/8"	0	4	A36, BENT	
pa12	2	BAR 1 x 1/4	0	1 1/2	A36, CLOSURE	
12B	ONE	HANDRAIL				
mb12	ONE	HSS 2x1 1/2 x 1/4	12	11 15/16	A500 GR B	
mf12	2	HSS 2x1 1/2 x 1/4	4	2 13/16	A500 GR B	
mg12	ONE	HSS 2x1 1/2 x 1/4	3	10 5/16	A500 GR B	
mk12	3	HSS 2x2 x 1/4	3	11 5/16	A500 GR B	
mm12	ONE	HSS 2x2 x 1/4	3	11 5/16	A500 GR B	
ms12	4	RB 5/8"	0	4	A36, BENT	
mt12	ONE	STD. PIPE 1 1/2"	17	0	A53 GR B, LIN. FT.	
pa12	2	BAR 1 x 1/4	0	1 1/2	A36, CLOSURE	
		PURCHASE ITEM				
	ONE	3/16" S.S. CABLE	236	6		
	36	INVISIWARE RECEIVER				
	36	INVISIWARE SWAGING STUDS				

GUARDRAIL NOTES
 1. LIN. FT. LENGTH INCLUDES ADDITIONAL 1'-6"
 2. ALL G.R. JOINT TO BE WELDED & GRIND SMOOTH

APPROVAL AUTHORITY:
 VERIFICATION OF DIMENSIONS, DETAILS, ETC
 ARE REQUESTED WHERE INDICATED. IF EACH
 VERIFICATION IS NOT NOTED OTHERWISE,
 IT WILL BE ASSUMED TO BE CORRECT AS SHOWN.

THIS PROJECT SHALL BE ERRECTED PER THE AISC THIRTEENTH EDITION CODE OF STANDARD PRACTICE SPECIFICALLY PARAGRAPH 7.14 AS FOLLOWS:
 7.14 CORRECTION OF ERRORS
 The correction of minor misfits by moderate amounts of reaming, grinding, welding or cutting, and the drawing of elements into line with drift pins. shall be considered to be normal erection operations. Errors that cannot be corrected using the foregoing means, or that require major changes in the member or Connection configuration, shall be promptly reported to the Owner's Designated Representatives for Design and Construction and the Fabricator by the Erector to enable the responsible entity to either correct the error or approve the most efficient and economical method of correction to be used by others.
 No Backcharges Will Be Accepted Unless Approved In Writing By Steel Structures, Inc



QUALITY CERTIFICATION

REFERENCE DRWG. / LOCATION	REV.	DATE	DESCRIPTION
E3	0	7/10	For FAB
	1	9/10	REV'D DIM

MATERIAL (UNLESS NOTED)	A36		
SURFACE PREPARATION	SHOP PRIMER U.N.		
SHOP PAINT	E70XX		
SHOP CONNECTIONS/ELECTRODES	AS NOTED		
FIELD CONNECTIONS	AS NOTED		

DETAILER	YS	DATE	6/10
CHECKER	SS	DATE	6/10
PROJECT MANAGER	SSI		

PRINTS	NO.	DATE
SHOP		
FIELD		
GEN CONT		
PRJ MGR		
Q A		
1st APPR		
SHOP PRELIM		
ERIC PRELIM		
Q C PRELIM		
ENGR.		
PURCH.		

STEEL STRUCTURES, INC.	
5980 So. Proyeon Ave. - Las Vegas, Nevada	
(702)736-7033	
JOB	CITY OF LAS VEGAS MUSEUM
LOCATION	Las Vegas, Nevada
CUSTOMER	APCO
DRWG. COVERS	HANDRAIL
JOB NO.	1014
DRWG. NO.	12

AS BUILTS