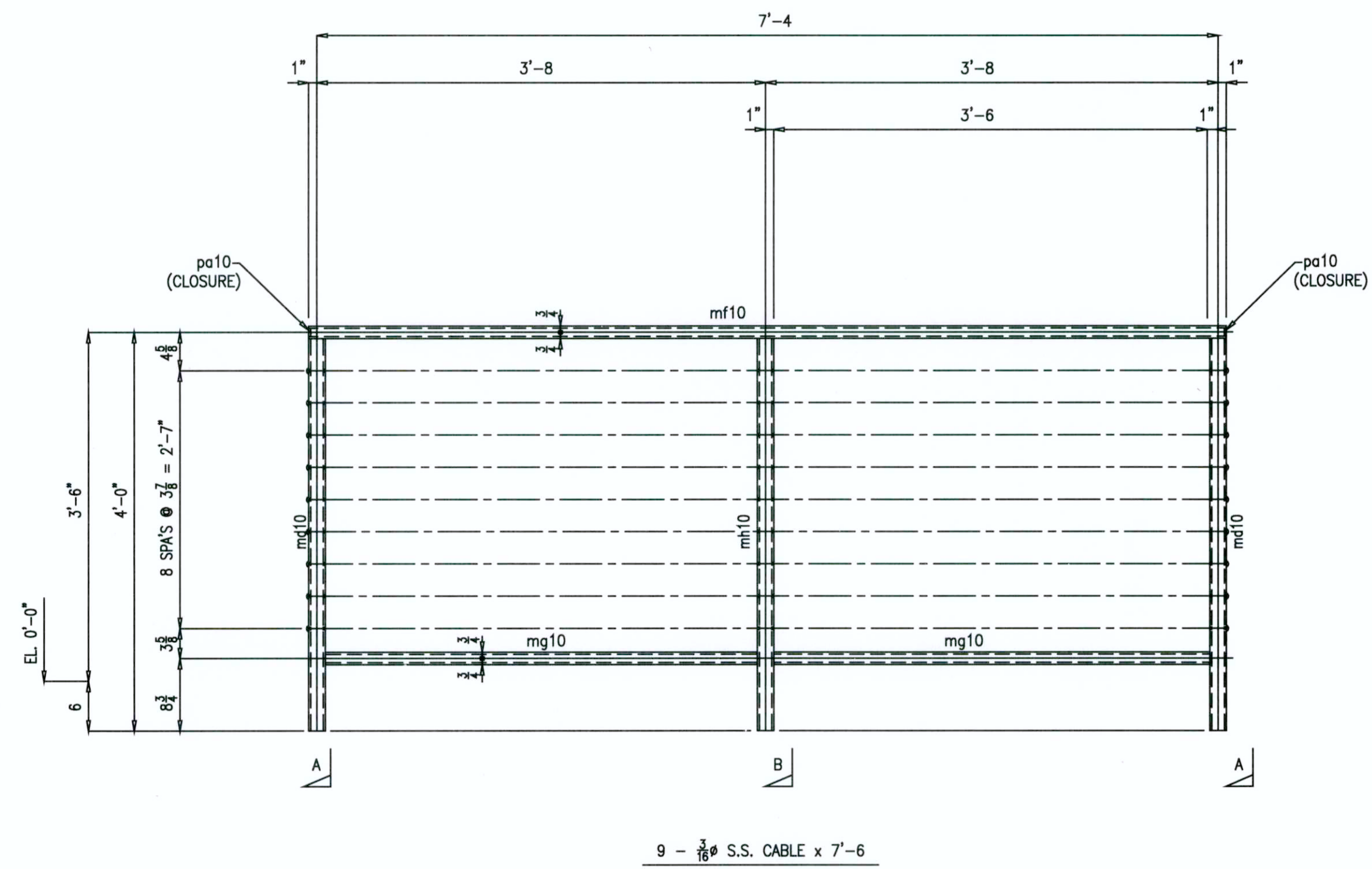
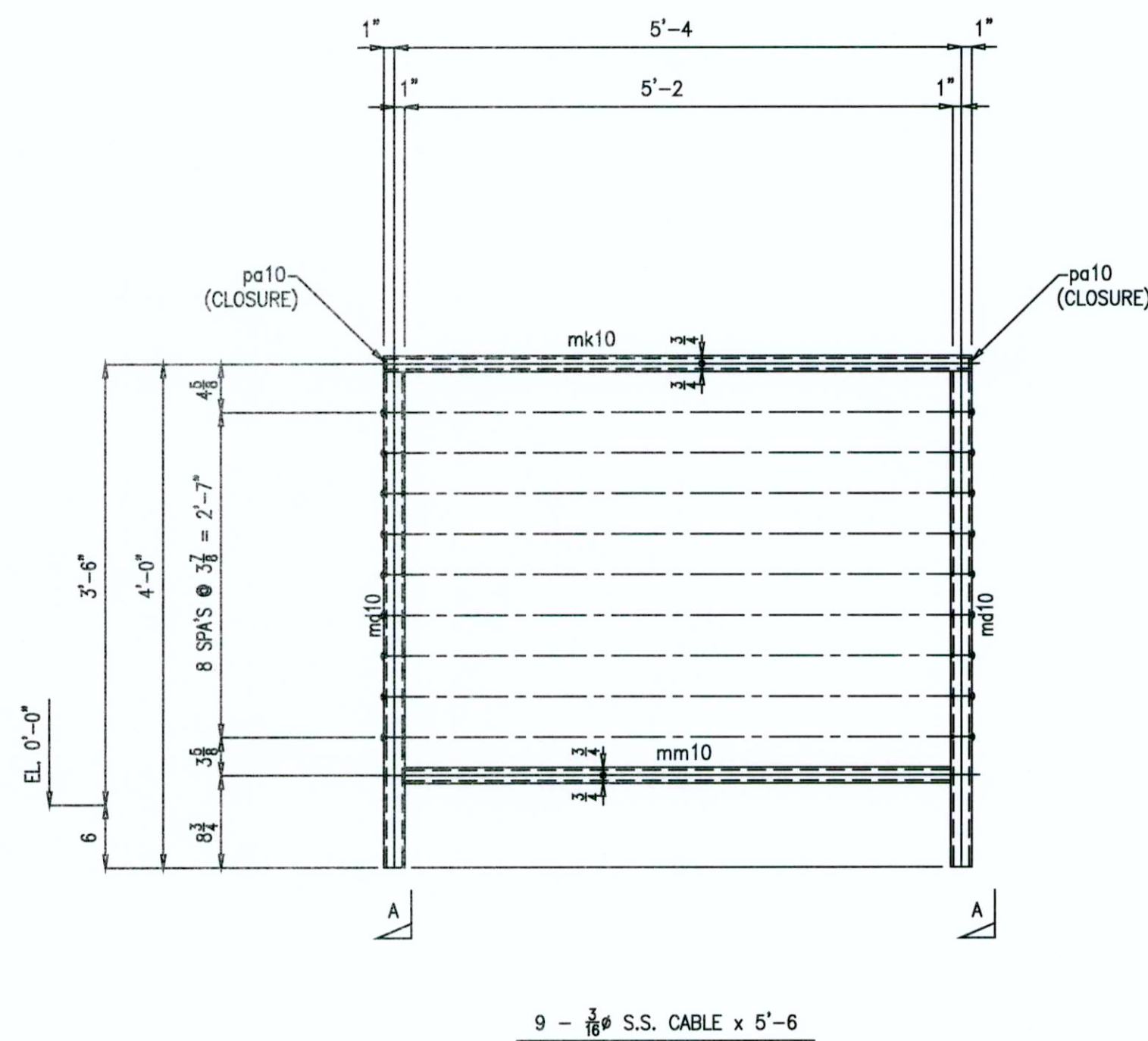


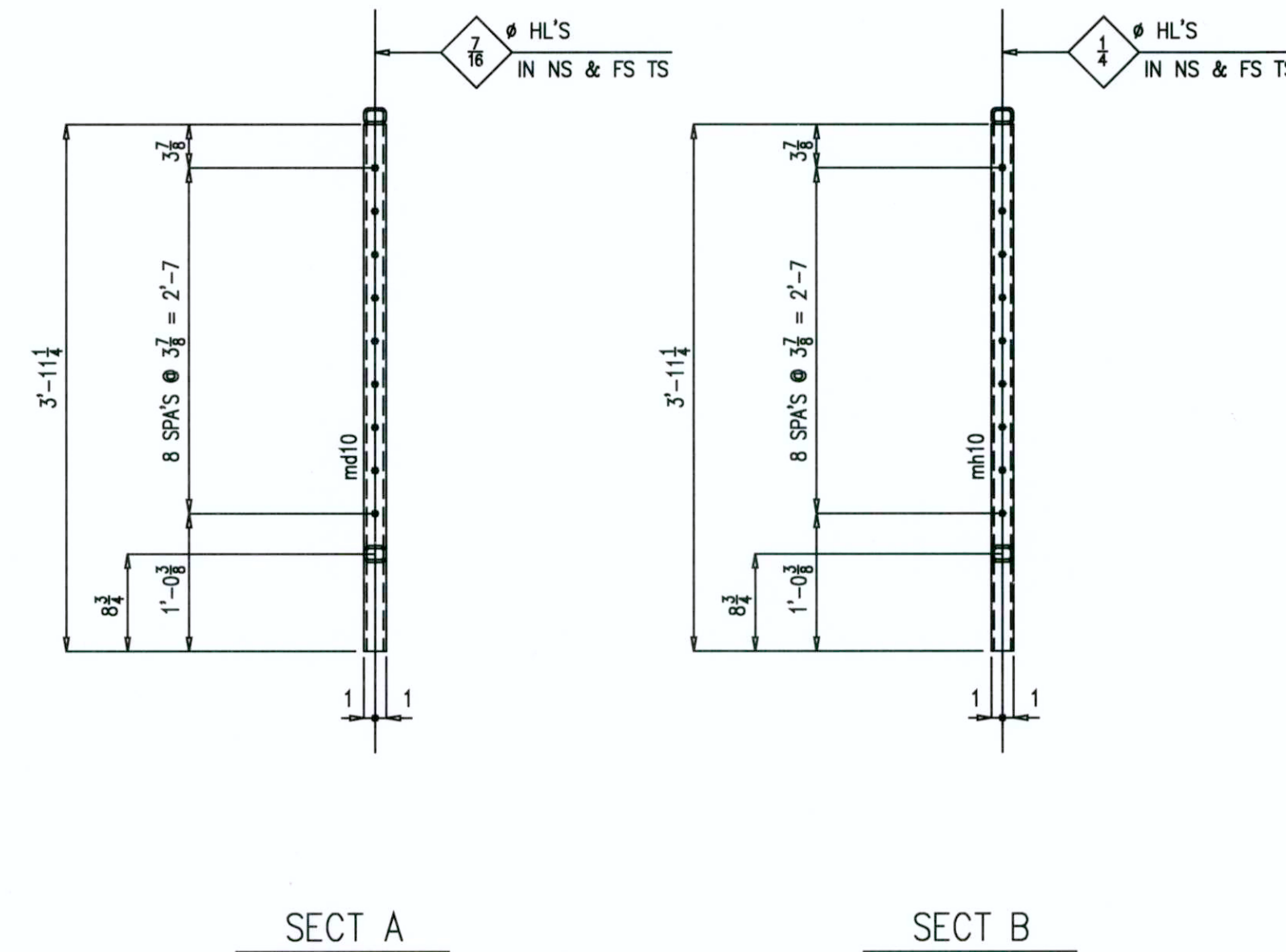
ONE - HANDRAIL - 10A



ONE - HANDRAIL - 10B



ONE - HANDRAIL - 10D



SECT A

SECT B

SHOP BILL						
MARK	QTY	DESCRIPTION	FT	IN	REMARKS	WT
10A	ONE	HANDRAIL				
ma10	ONE	HSS 2x1 1/2 x 1/4	6	4	A500 GR B	
mb10	ONE	HSS 2x1 1/2 x 1/4	6	0	A500 GR B	
md10	2	HSS 2x2x 1/4	3	11 1/4	A500 GR B	
pa10	2	BAR 1x 1/4	0	1 1/2	A36, CLOSURE	
10B	ONE	HANDRAIL				
mf10	ONE	HSS 2x1 1/2 x 1/4	7	6	A500 GR B	
mg10	2	HSS 2x1 1/2 x 1/4	3	6	A500 GR B	
md10	2	HSS 2x2x 1/4	3	11 1/4	A500 GR B	
mh10	ONE	HSS 2x2x 1/4	3	11 1/4	A500 GR B	
pa10	2	BAR 1x 1/4	0	1 1/2	A36, CLOSURE	
10D	ONE	HANDRAIL				
mk10	ONE	HSS 2x1 1/2 x 1/4	5	6	A500 GR B	
mm10	2	HSS 2x1 1/2 x 1/4	5	2	A500 GR B	
md10	2	HSS 2x2x 1/4	3	11 1/4	A500 GR B	
pa10	2	BAR 1x 1/4	0	1 1/2	A36, CLOSURE	
		PURCHASE ITEM				
	ONE	3/16 S.S. CABLE	162	0		
	54	INVISIWARE RECEIVER				
	54	INVISIWARE SWAGING STUDS				

- GUARDRAIL NOTES**
1. LIN. FT. LENGTH INCLUDES ADDITIONAL 1'-6"
 2. ALL G.R. JOINT TO BE WELDED & GRIND SMOOTH

APPROVAL AUTHORITY:
VERIFICATION OF DIMENSIONS, DETAILS, ETC
ARE REQUESTED WHERE INDICATED. IF EACH
VERIFICATION IS NOT NOTED OTHERWISE,
IT WILL BE ASSUMED TO BE CORRECT AS SHOWN.



QUALITY CERTIFICATION

REFERENCE DRWG. / LOCATION	REV.	DATE	DESCRIPTION	PRINTS	NO.	DATE
E3	0	7/10	For FAB	SHOP		
	1	7/10	Release Hold	FIELD		
	2	4/11	REV'D DIM.	GEN CONT		
MATERIAL (UNLESS NOTED)				PRJ MGR		
A36				Q A		
SURFACE PREPARATION				1st APPR		
				SHOP PRELIM		
SHOP PAINT				ERIC PRELIM		
SHOP PRIMER U.N.				Q.C. PRELIM		
SHOP CONNECTIONS/ELECTRODES				ENGR.		
E70XX				PURCH.		
FIELD CONNECTIONS				STEEL STRUCTURES, INC. 5980 So. Procyon Ave. - Las Vegas, Nevada (702)736-7033 CITY OF LAS VEGAS MUSEUM Las Vegas, Nevada APCO HANDRAIL		
HOLES (U.N.)						
AS NOTED						
DETAILER	YS	DATE	6/10	JOB NO.	1014	
CHECKER	SS	DATE	6/10	DRWG. NO.	10	
PROJECT MANAGER	SSI					

THIS PROJECT SHALL BE ERRECTED PER THE AISC THIRTEENTH EDITION CODE OF STANDARD PRACTICE SPECIFICALLY PARAGRAPH 7.14 AS FOLLOWS:

7.14 CORRECTION OF ERRORS
The correction of minor misfits by moderate amounts of reaming, grinding, welding or cutting, and the drawing of elements into line with drift pins, shall be considered to be normal erection operations. Errors that cannot be corrected using the foregoing means, or that require major changes in the member or Connection configuration, shall be promptly reported to the Owner's Designated Representatives for Design and Construction and the Fabricator by the Erector to enable the responsible entity to either correct the error or approve the most efficient and economical method of correction to be used by others.

No Backcharges Will Be Accepted Unless Approved In Writing By Steel Structures, Inc

AS BUILTS