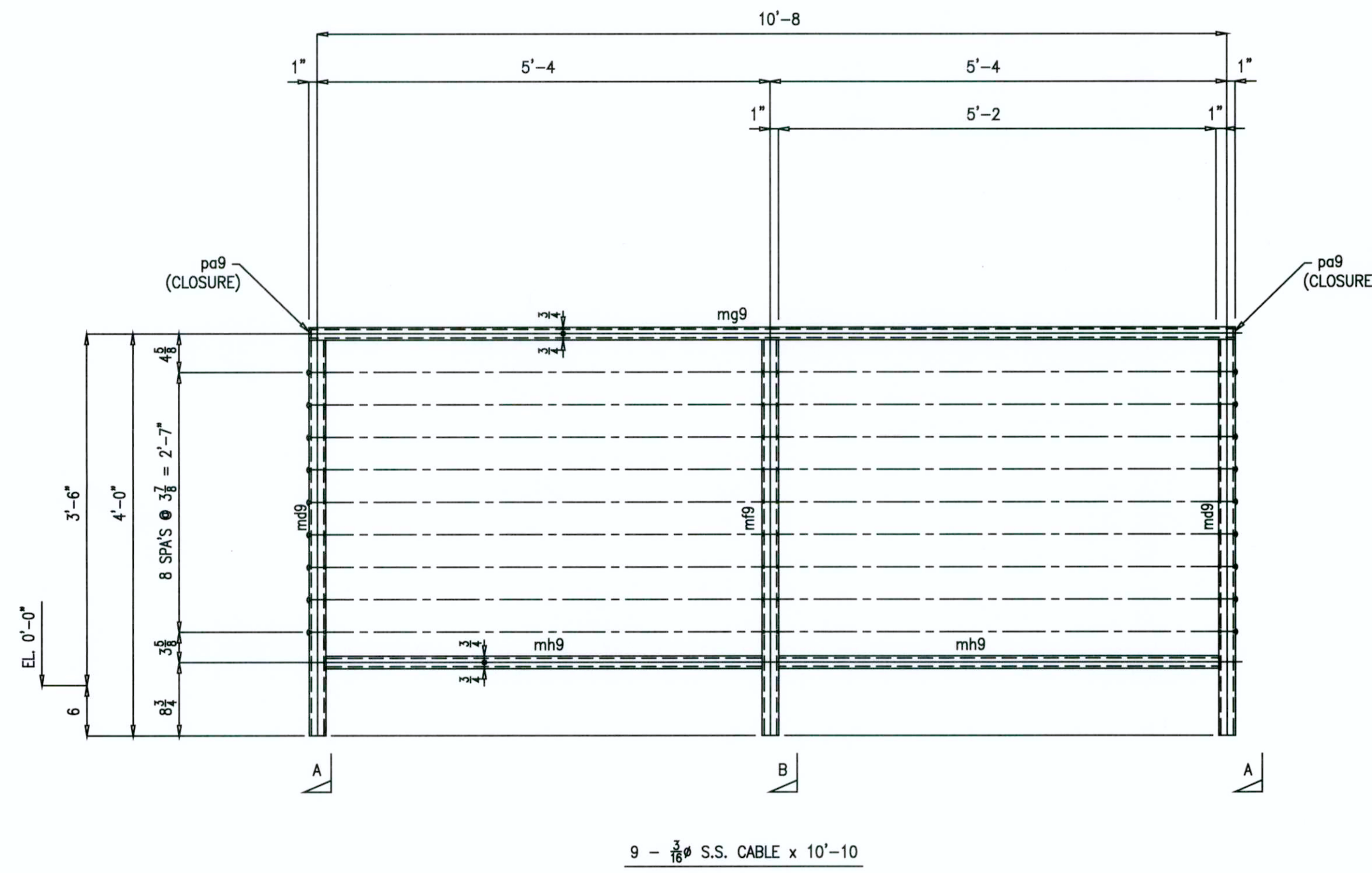
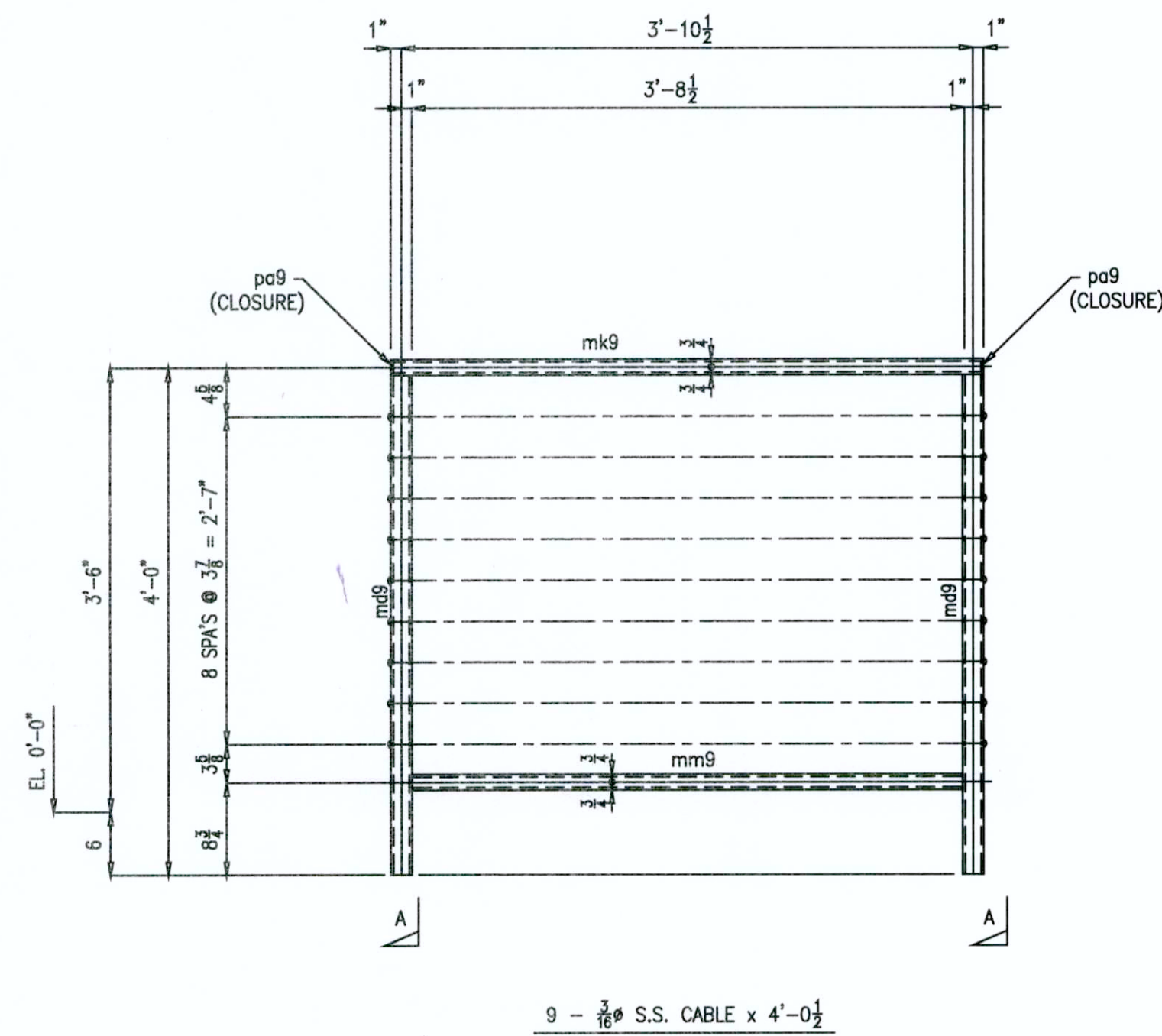


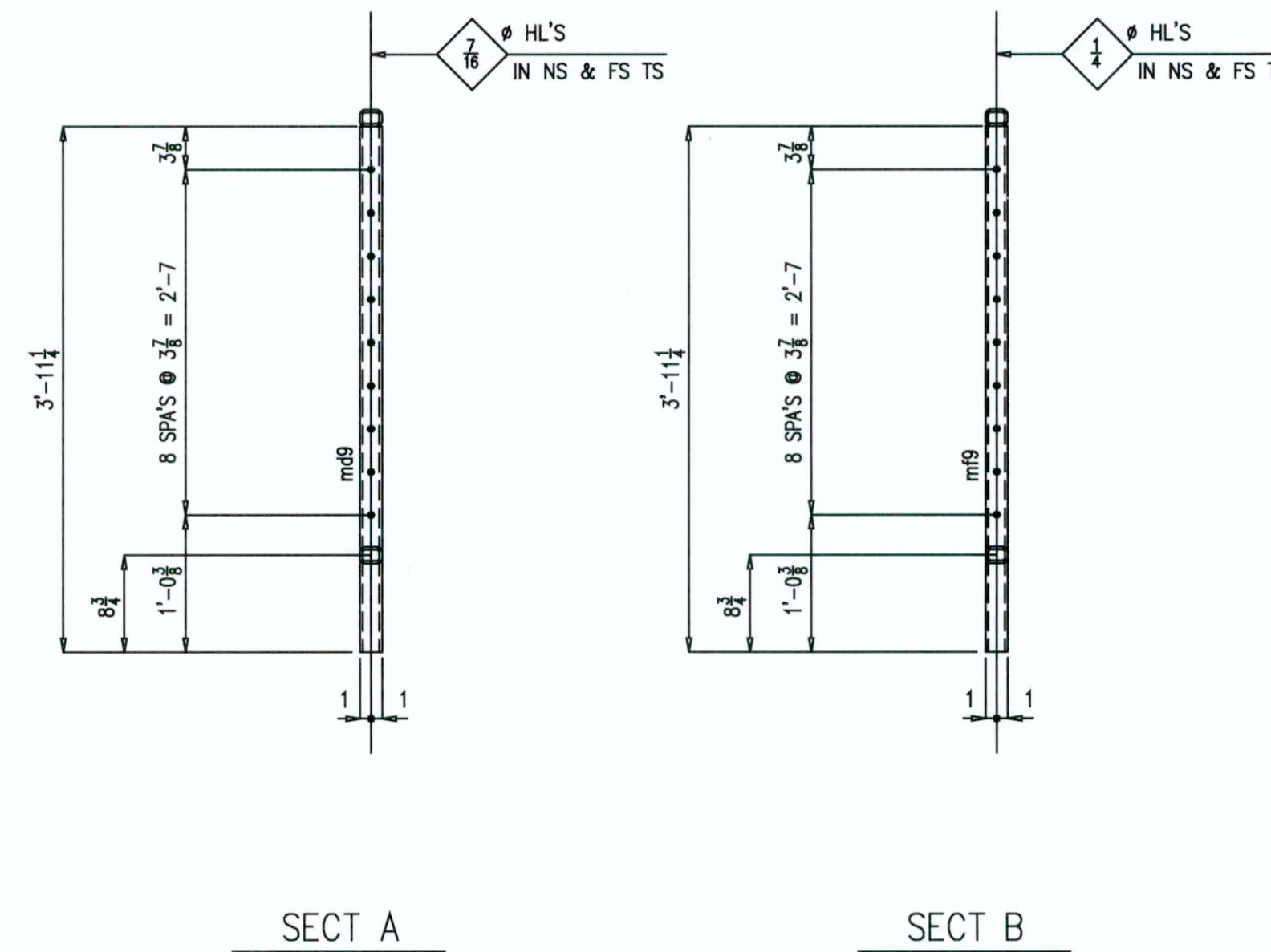
ONE - HANDRAIL - 9A



ONE - HANDRAIL - 9B



ONE - HANDRAIL - 9D



MARK	QTY	DESCRIPTION	FT	IN	REMARKS	WT
9A	ONE	HANDRAIL				
ma9	ONE	HSS 2x1 1/2 x 1/4	12	4	A500 GR B	
mb9	2	HSS 2x1 1/2 x 1/4	5	11	A500 GR B	
md9	2	HSS 2x2 x 1/4	3	11 1/4	A500 GR B	
mf9	ONE	HSS 2x2 x 1/4	3	11 1/4	A500 GR B	
pa9	2	BAR 1 x 1/4	0	1 1/2	A36, CLOSURE	
9B	ONE	HANDRAIL				
mg9	ONE	HSS 2x1 1/2 x 1/4	10	10	A500 GR B	
mh9	2	HSS 2x1 1/2 x 1/4	5	2	A500 GR B	
md9	2	HSS 2x2 x 1/4	3	11 1/4	A500 GR B	
mf9	ONE	HSS 2x2 x 1/4	3	11 1/4	A500 GR B	
pa9	2	BAR 1 x 1/4	0	1 1/2	A36, CLOSURE	
9D	ONE	HANDRAIL				
mk9	ONE	HSS 2x1 1/2 x 1/4	4	0 1/2	A500 GR B	
mm9	ONE	HSS 2x1 1/2 x 1/4	3	8 1/2	A500 GR B	
md9	2	HSS 2x2 x 1/4	3	11 1/4	A500 GR B	
pa9	2	BAR 1 x 1/4	0	1 1/2	A36, CLOSURE	
		PURCHASE ITEM				
	ONE	3/16 S.S. CABLE	244	10 1/2		
	54	INVISIWARE RECEIVER				
	54	INVISIWARE SWAGING STUDS				

GUARDRAIL NOTES:
 1. LIN. FT. LENGTH INCLUDES ADDITIONAL 1'-6"
 2. ALL G.R. JOINT TO BE WELDED & GRIND SMOOTH

APPROVAL AUTHORITY:
 VERIFICATION OF DIMENSIONS, DETAILS, ETC
 ARE REQUESTED WHERE INDICATED. IF EACH
 VERIFICATION IS NOT NOTED OTHERWISE,
 IT WILL BE ASSUMED TO BE CORRECT AS SHOWN.



QUALITY CERTIFICATION

PRINTS	NO.	DATE
SHOP		
FIELD		
GEN CONT		
PRJ MGR		
Q A		
1st APPR		
SHOP PRELIM		
EREC PRELIM		
O C PRELIM		
ENGR.		
PURCH.		

REFERENCE DRWG. / LOCATION	REV.	DATE	DESCRIPTION
E3	0	7/10	For FAB
MATERIAL (UNLESS NOTED)			
A36			
SURFACE PREPARATION			
SHOP PAINT			
SHOP PRIMER U.N.			
SHOP CONNECTIONS/ELECTRODES			
E70XX			
FIELD CONNECTIONS			
HOLES (U.N.)			
AS NOTED			

DETAILER	YS	DATE	6/10
CHECKER	SS	DATE	6/10
PROJECT MANAGER	SSI		

JOB NO.	1014
DRWG. NO.	9

THIS PROJECT SHALL BE ERECTED PER THE AISC THIRTEENTH EDITION CODE OF STANDARD PRACTICE SPECIFICALLY PARAGRAPH 7.14 AS FOLLOWS:
 7.14 CORRECTION OF ERRORS
 The correction of minor misfits by moderate amounts of reaming, grinding, welding or cutting, and the drawing of elements into line with drift pins, shall be considered to be normal erection operations. Errors that cannot be corrected using the foregoing means, or that require major changes in the member or Connection configuration, shall be promptly reported to the Owner's Designated Representatives for Design and Construction and the Fabricator by the Erector to enable the responsible entity to either correct the error or approve the most efficient and economical method of correction to be used by others.
 No Backcharges Will Be Accepted Unless Approved In Writing By Steel Structures, Inc

AS BUILTS