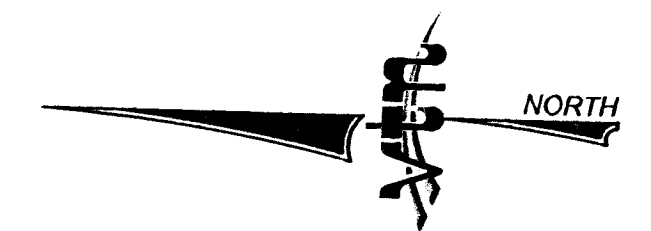
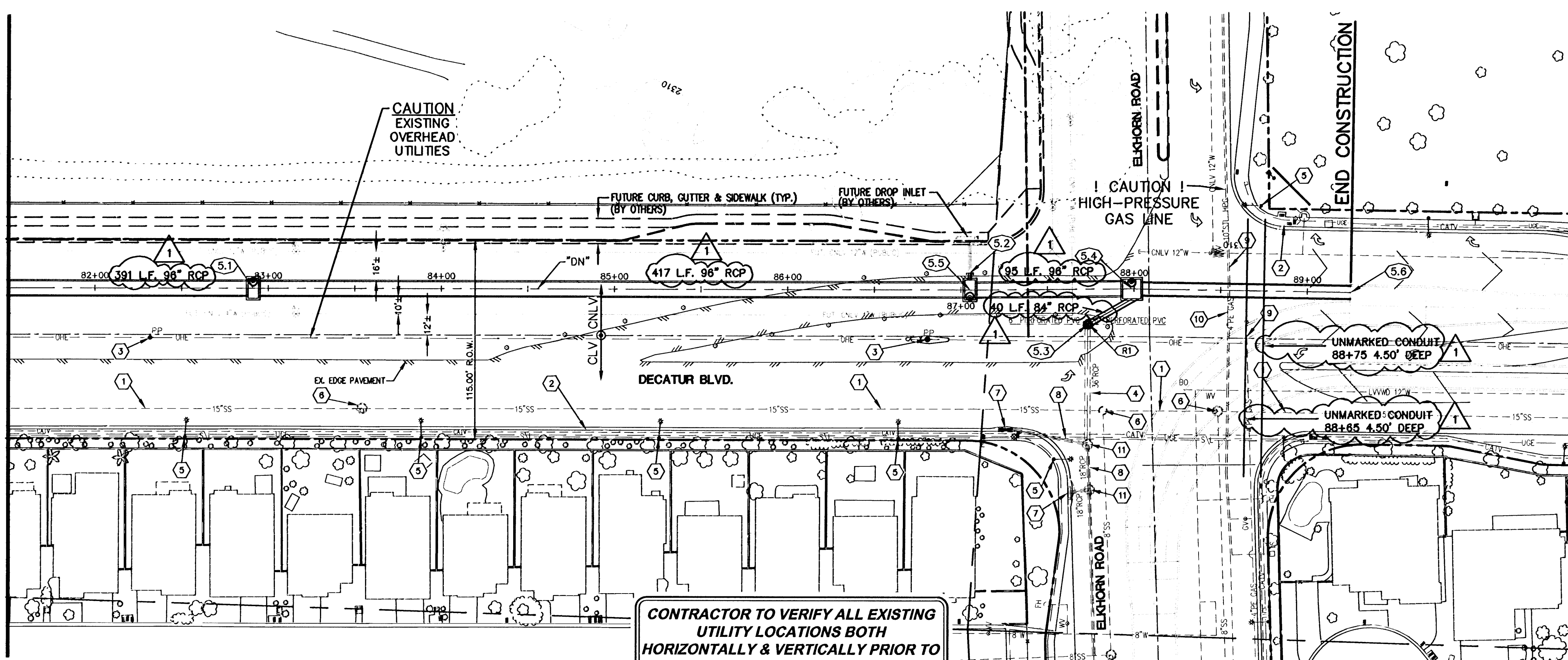


MATCH LINE - "DN" 81+50 - SEE SHEET CH4



GRAPHIC SCALE  
 ( IN FEET )  
 1 inch = 40 ft.  
 (VERIFY SCALE - PLANS MAY HAVE BEEN REDUCED)

**STORM DRAIN CONSTRUCTION ITEMS:**

- 5.1 "DN" 82+91.34  
INSTALL MODIFIED NDOT TYPE 4 SDMH  
FOR STRUCTURAL DETAILS REFER TO  
SHEET S6  
INSTALL 407.86 L.F. 96" RCP
- 5.2 "DN" 87+05.21, 9.75' LT  
INSTALL 18" RCP STUB  
S=17.36%  
INSTALL 18" PRECAST RCP END CAP
- 5.3 "DN" 87+73.24, 19.70' RT  
INSTALL TYPE III 60" SDMH  
PER USDOCA STD. DWG. #408  
INSTALL 30.08 L.F. 36" RCP  
SEE PROFILE 7 SHEET SD2
- 5.4 "DN" 87+98.60  
INSTALL JUNCTION STRUCTURE  
FOR STRUCTURAL DETAILS REFER TO  
SHEET S3  
INSTALL 121.19 L.F. 7'x6" RCB
- 5.5 "DN" 87+05.20  
INSTALL MODIFIED NDOT TYPE 4 SDMH  
FOR STRUCTURAL DETAILS REFER TO  
SHEET S6  
INSTALL 85.11 L.F. 96" RCP
- 5.6 "DN" 89+25.00  
END 7'x6" RCB  
CAP WITH RCB END CAP  
PER DETAIL ON SHEET D1  
CONTRACTOR TO SUBMIT AS-BUILT SURVEY  
TO ENGINEER WITHIN 5 DAYS OF RCB  
PLACEMENT AT FINAL GRADE

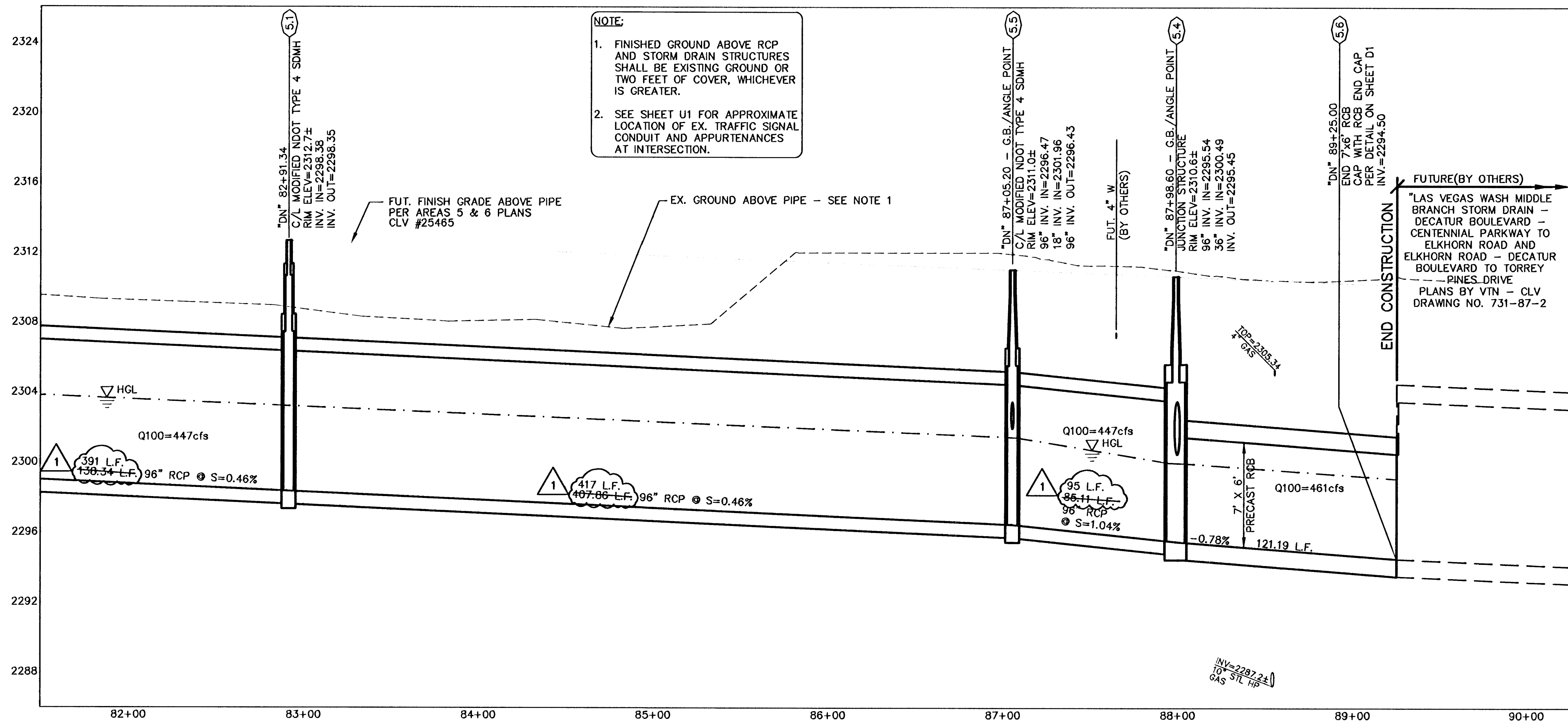
**CONTRACTOR TO VERIFY ALL EXISTING  
 UTILITY LOCATIONS BOTH  
 HORIZONTALLY & VERTICALLY PRIOR TO  
 COMMENCEMENT OF CONSTRUCTION**

**REMOVAL ITEMS:**

- (R1) REMOVE EX. SDMH AND 6" PERFORATED PVC

**MISCELLANEOUS CONSTRUCTION NOTES:**

- 1 EX. 15" SANITARY SEWER - PROTECT IN PLACE
- 2 EX. CURB, GUTTER, SIDEWALK & UTILS. - PROTECT IN-PLACE
- 3 EX. POWER POLE - PROTECT IN-PLACE
- 4 EX. 36" RCP SD - PROTECT IN-PLACE
- 5 EX. STREET LIGHT - PROTECT IN PLACE
- 6 EX. SANITARY SEWER MH - PROTECT IN PLACE
- 7 EX. DROP INLET - PROTECT IN PLACE
- 8 EX. 18" SD - PROTECT IN PLACE
- 9 EX. 4" PE GAS - PROTECT IN PLACE
- 10 EX. 10" STL HIGH PRESSURE GAS - PROTECT IN PLACE
- 11 EX. STORMDRAIN MH - PROTECT IN PLACE



**NOTE:**  
 1. FINISHED GROUND ABOVE RCP  
 AND STORM DRAIN STRUCTURES  
 SHALL BE EXISTING GROUND OR  
 TWO FEET OF COVER, WHICHEVER  
 IS GREATER.  
 2. SEE SHEET U1 FOR APPROXIMATE  
 LOCATION OF EX. TRAFFIC SIGNAL  
 CONDUIT AND APPURTENANCES  
 AT INTERSECTION.

THE CNLV 4" W IS INTENDED TO BE  
 USED FOR IRRIGATION PURPOSES  
 ONLY. DOMESTIC CONNECTIONS  
 WILL NOT BE ALLOWED

**APPROVED**  
 Las Vegas Valley Water District  
 Date \_\_\_\_\_

**Call before you Dig**  
 Avoid cutting, underground  
 utility lines, it's costly.

**Call 811**  
 1-800-227-2929  
 NEVADA POWER ENVIRONMENT AND  
 SAFETY SERVICES DEPARTMENT

OR  
 1-800-227-2600  
 CLARK COUNTY PUBLIC OPERATIONS  
 1-702-455-7544

|                     |                     |  |  |
|---------------------|---------------------|--|--|
| DESIGNED BY:<br>VIN | CHECKED BY:         | PROJECT NO:<br>881   | SCALE:<br>HORIZ. 1"=40'<br>VERT. 1"=4' |
| DRAWN BY:<br>DKP    | DATE:<br>08/08/2008 | SHEET<br><b>CH5</b><br>11 OF 25 SHEETS<br>DRAWING NO.<br><b>731-87</b> |  |

**CONSTRUCTION PLAN & PROFILE  
 "DN" 81+50 TO "DN" 89+25**  
**LAS VEGAS WASH MIDDLE BRANCH  
 DECATUR BOULEVARD  
 ELKHORN ROAD TO WHISPERING SANDS DRIVE**

**PUBLIC WORKS DEPARTMENT**  
 400 E. STEWART AVE.  
 LAS VEGAS, NV 89101  
 702-229-6772

2272 SOUTH RENO BOULEVARD  
 LAS VEGAS, NV 89146-5146  
 PH. (702) 873-7550  
 FAX (702) 362-2597  
 WEB SITE WWW.VWV.NV.COM

|          |      |     |                           |
|----------|------|-----|---------------------------|
| REVISION | DATE | BY  | REASON                    |
| 7-19-10  |      | VIN | REMOVED PER REC. DRAWINGS |

RECORD DRAWINGS INFORMATION SUPPLIED BY CONTRACTOR - JULY 2010