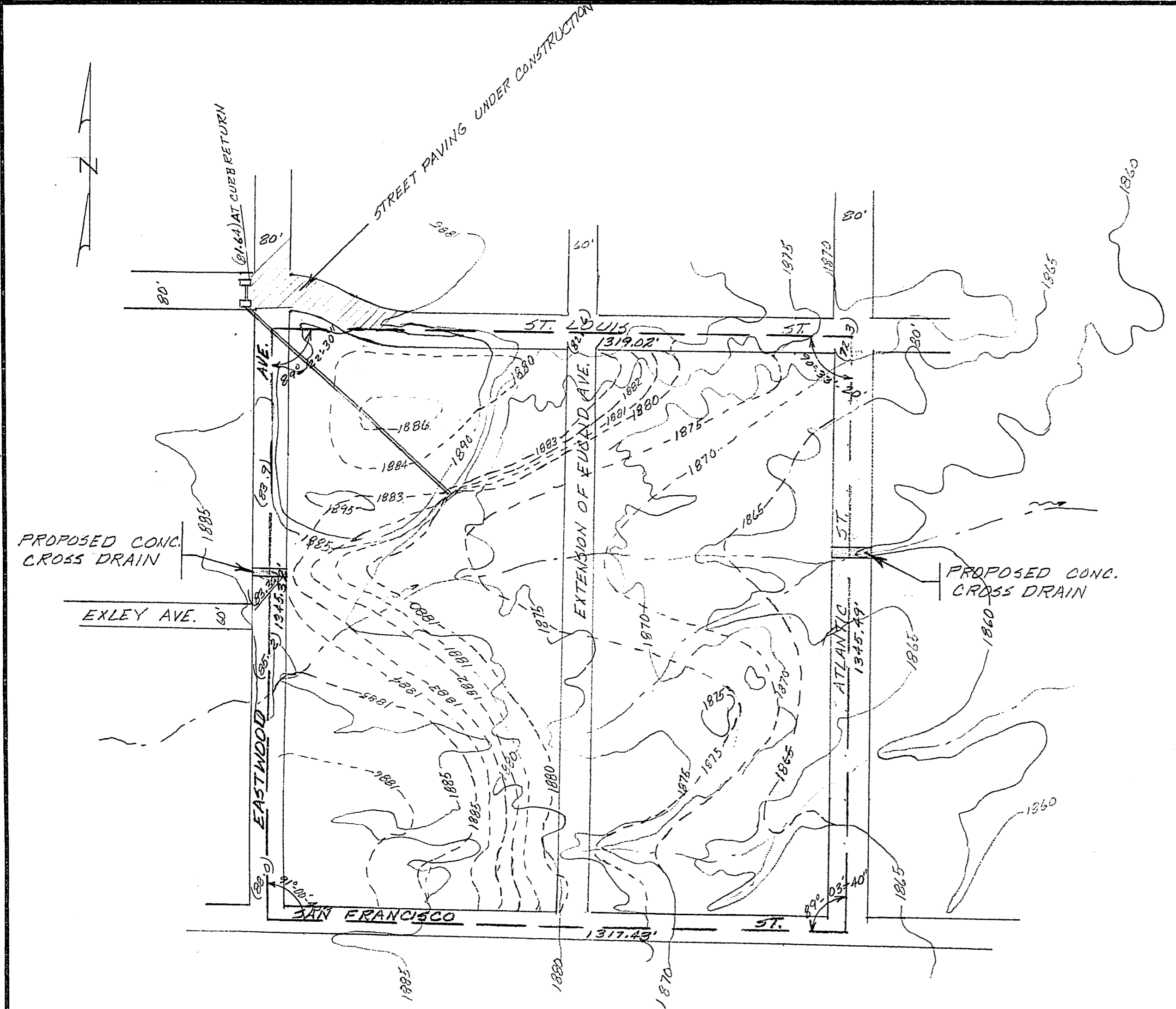


7-13-151



EXISTING CONTOUR
 FINISHED CONTOUR
 INLET
 STORM SEWER
 BOUNDARY CITY PROPERTY
 EXISTING DRAINAGE CHANNEL

- NOTES
1. Existing contours traced from Fairchild Contour Map.
 2. Construct 2 inlets just west of existing C.&G. returns.
 3. 660-24" sewer pipe req'd. Approx. outfall elev. 1876.1
Headwall required at outfall.
 4. Elevations shown in parentheses are from street design plans.

CITY OF LAS VEGAS NEVADA
ENGINEERING DEPT.

PRELIMINARY GRADING & DRAINAGE
PLAN FOR OLD CITY PUMP
J.C. Parks

DESIGNED BY <i>Rybranz</i>	DATE <i>10-54</i>	SCALE <i>1" = 200'</i>
DRAWN BY		FIELD BOOK NO.
CHECKED BY		WORK ORDER NO.
APPROVED		DRAWING NO.
CITY ENGR.		

650.6-14-151