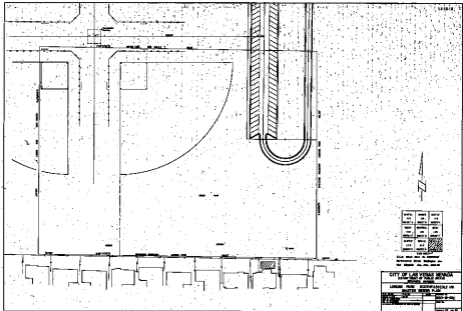


N/W'LY 1/9 SHEET 2	NORTH 1/9 SHEET 3	N/E'LY 1/9 SHEET 4
WEST 1/9 SHEET 5	CENTRAL 1/9 SHEET 6	EAST 1/9 SHEET 7
S/W'LY 1/9 SHEET 8	SOUTH 1/9 SHEET 9	S/E'LY 1/9 SHEET 10

THIS SHEET
 C.L.V. Bench Mark No. 06129B20
 Northwesterly Corner Washington Ave.
 And Magnolia Ave., Elev. 2102.49

CITY OF LAS VEGAS NEVADA			
DEPARTMENT OF PUBLIC WORKS SERVICES DIVISION			
LORENZI PARK SOUTHEASTERLY 1/9			
MASTER SEWER PLAN			
W.O. NO. 3111	F.BK. NO.	DATE	DRAWING NO.
SC. (H) 1" = 30'	SC. (V)		650-19-10E
DES. E. LOUVIERE DR. R. GLOUNER			FILE NO.
APPROVED BY DIRECTOR OF PUBLIC WORKS			SHEET 10 OF 10



1/4" = 1'-0"	1/8" = 1'-0"	1/16" = 1'-0"
1/32" = 1'-0"	1/64" = 1'-0"	1/128" = 1'-0"
1/256" = 1'-0"	1/512" = 1'-0"	1/1024" = 1'-0"
1/2048" = 1'-0"	1/4096" = 1'-0"	1/8192" = 1'-0"

ALL DIMENSIONS ARE IN FEET AND INCHES
 UNLESS OTHERWISE SPECIFIED

CITY OF LAS VEGAS, NEVADA
 DEPARTMENT OF CITY ENGINEERING
 PLANNING DIVISION

**LOANS FUND - RECONSTRUCTION OF
 SUTTER STREET P.L.S.**

PROJECT NO. _____

DATE: _____

SCALE: _____

BY: _____

CHECKED BY: _____

APPROVED BY: _____