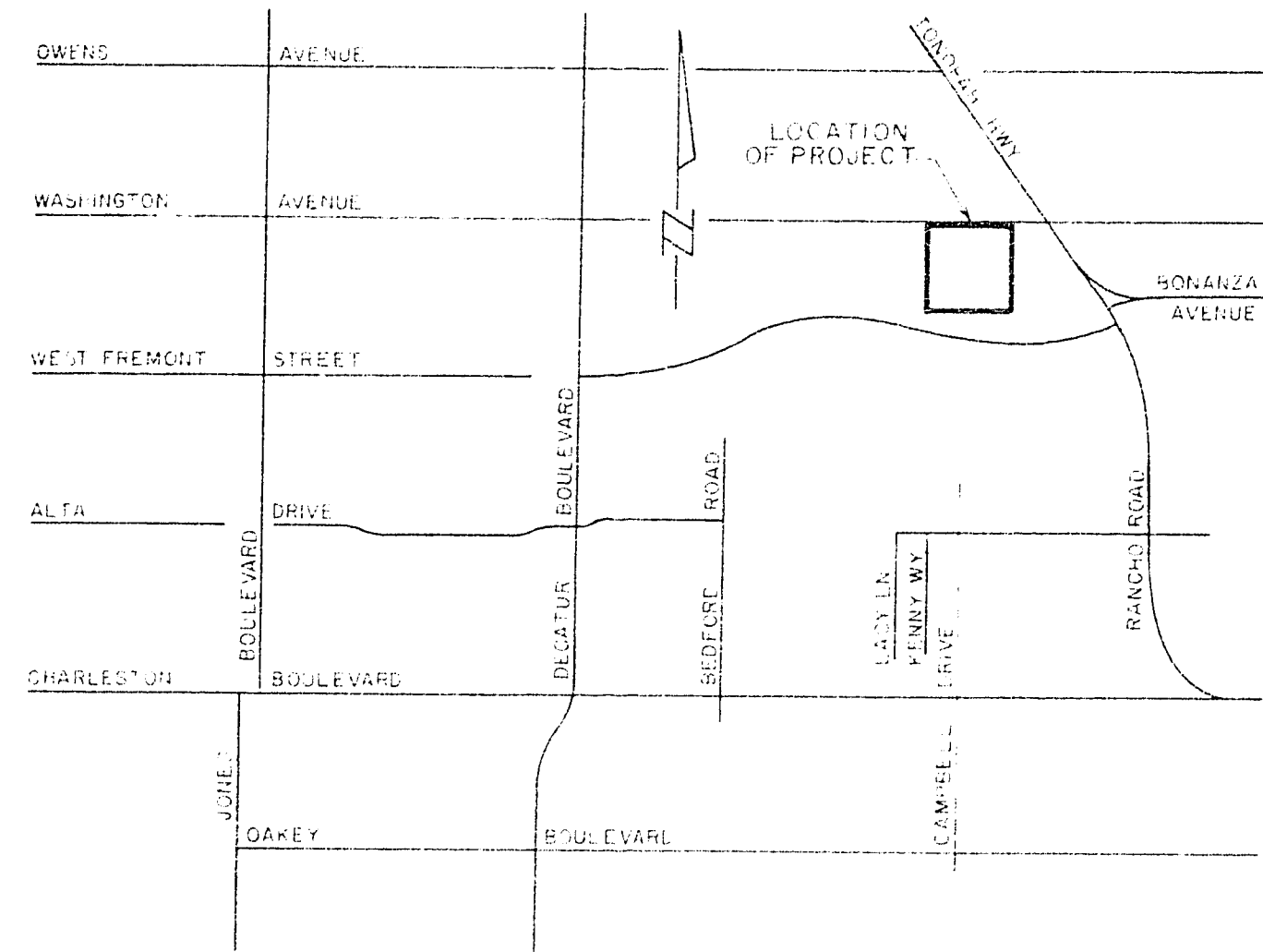


VICINITY MAP



CITY OF LAS VEGAS

LORENZI PARK
MASTER SEWER PLANS



INDEX OF SHEETS

N. W. Q. 1/9	NORTH 1/9	N. E. Q. 1/9
SHEET 2	SHEET 3	SHEET 4
WEST 1/9	CENTRAL 1/9	EAST 1/9
SHEET 5	SHEET 6	SHEET 7
S. W. Q. 1/9	SOUTH 1/9	S. E. Q. 1/9
SHEET 8	SHEET 9	SHEET 10

DEPARTMENT	PLANS REVIEWED AND APPROVED BY
CITY MANAGER	
PLANNING DEPT.	
PARKS DEPT.	
RECREATION DEPT.	

MAYOR
ORAN K. GRAGSON

COMMISSIONERS
JAMES COREY
WESLEY G. HOWERY
ALEXANDER COBLENTZ, M.D.
HANK THORNLEY

CITY MANAGER
A. R. TRELEASE

DEPARTMENT OF PUBLIC WORKS	APPROVED BY	DATE OF APPROVAL
TRAFFIC ENGINEER		
DESIGN SECTION CHIEF		
CONSTRUCTION DIVISION ENGINEER		
SERVICES DIVISION ENGINEER		
DEPUTY DIRECTOR OF PUBLIC WORKS		
SUPT. OF SANITATION		

DIRECTOR OF PUBLIC WORKS

RICHARD P. SAUER

CITY OF LAS VEGAS NEVADA			
DEPARTMENT OF PUBLIC WORKS			
SERVICES DIVISION			
LORENZI PARK			
MASTER SEWER PLAN			
W. O. NO. 3111	E. B. NO.	DATE	DRAWING NO.
SC. (H) 1" = 30'	SC. (V)		650-19-10E
DES. E. LOUVIERE			FILE NO.
DR. P. MANZIE			
APPROVED BY DIRECTOR OF PUBLIC WORKS			
			SHEET 1 OF 10

1.301-91-021