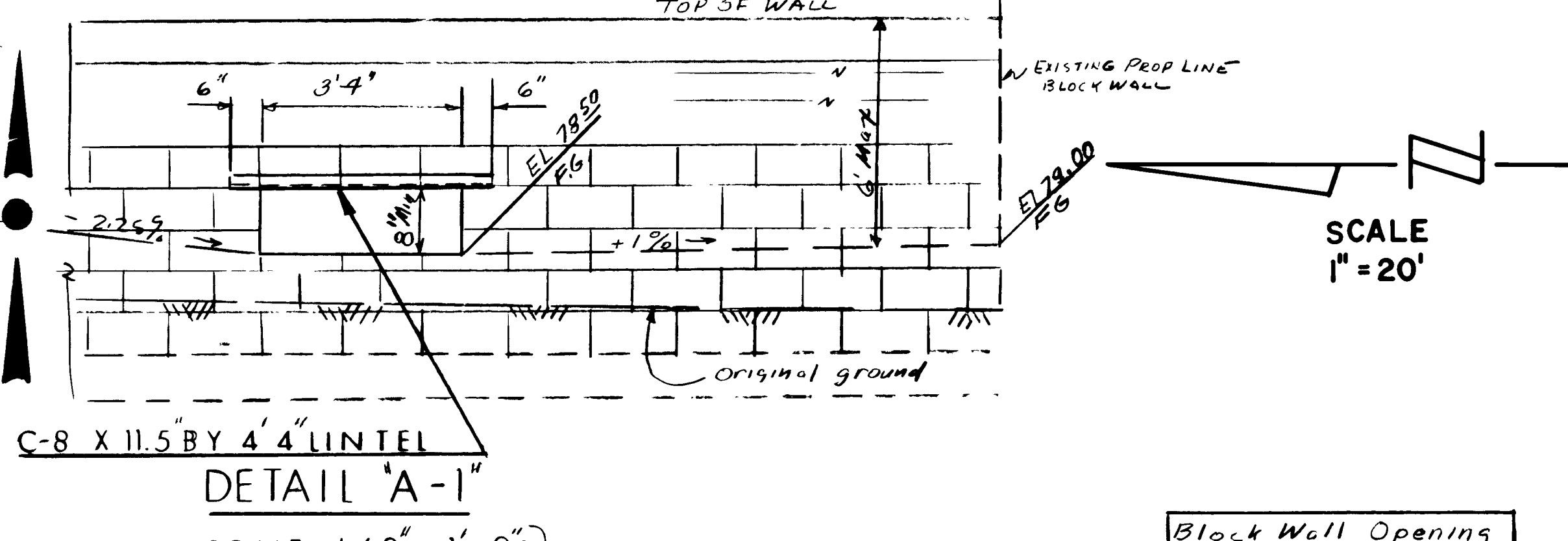
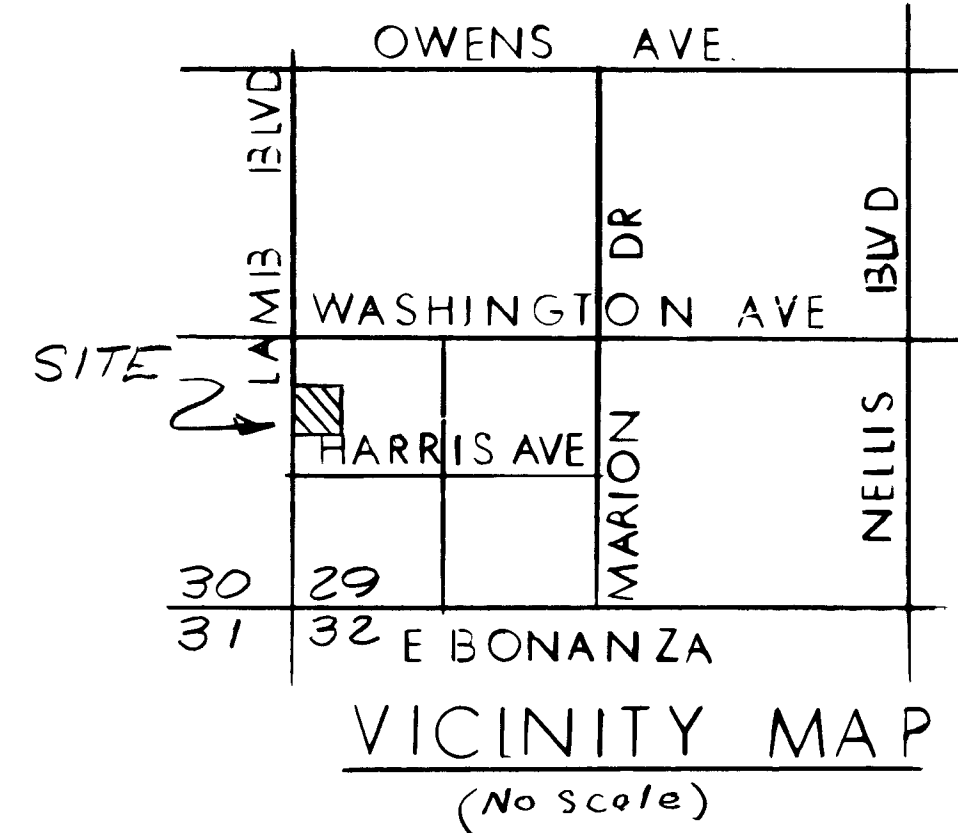


TYPE "A" CURB
Scale: 1" = 1'-0"



DETAIL "A-1"
SCALE: 1/2" = 1'-0"

- LEGEND**
- EXISTING ELEVATION
 - DESIGN ELEVATION
 - F.G. FINISH GRADE
 - T.C. TOP OF CURB
 - FL FLOWLINE
 - H.P. HIGHPOINT
 - G.B. GRADE BREAK
 - A.C. ASPHALTIC CONCRETE
 - CONTOUR (1' INTERVAL)
 - CONTOUR (5' INTERVAL)
 - PAD ELEVATION
 - DRAINAGE SWALES (DIRECTION & SLOPE)
 - 6' HIGH BLOCK WALL
 - EXISTING EDGE OF PAVEMENT
 - EXISTING BLOCK WALL
 - EXISTING STREET LIGHT
 - EXISTING FIRE HYDRANT
 - EXISTING MANHOLE
 - CONSTRUCTION NOTES



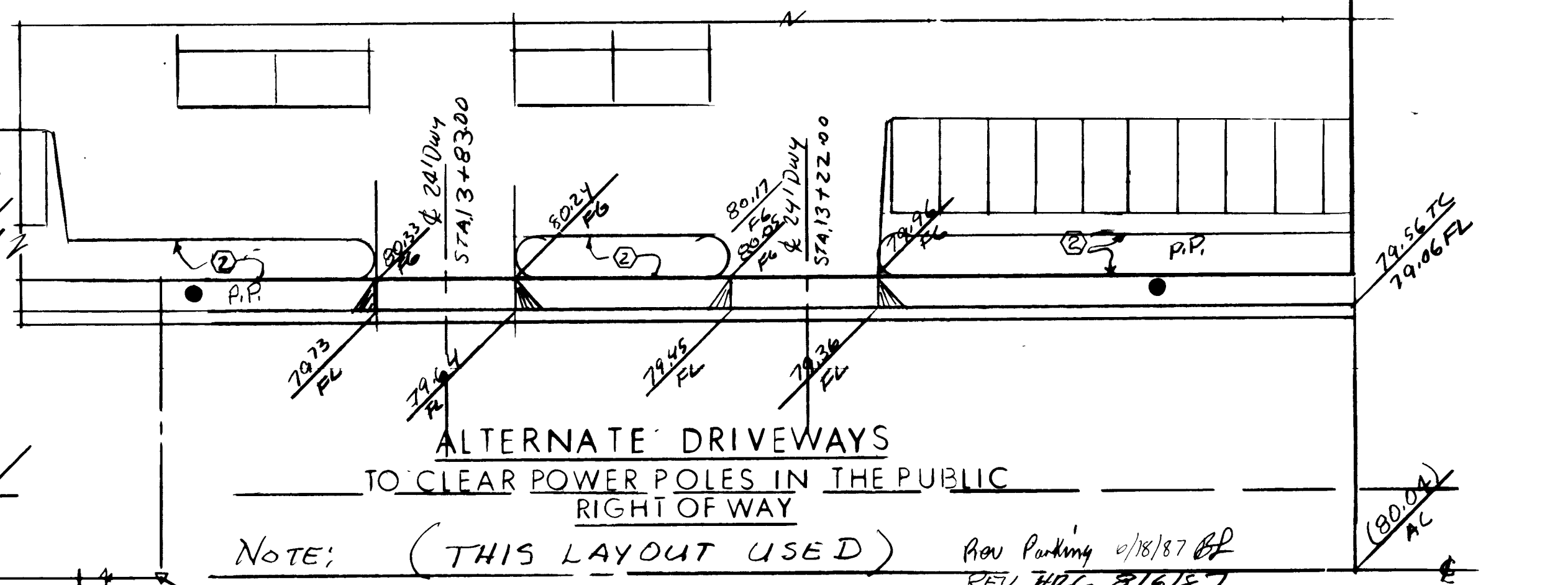
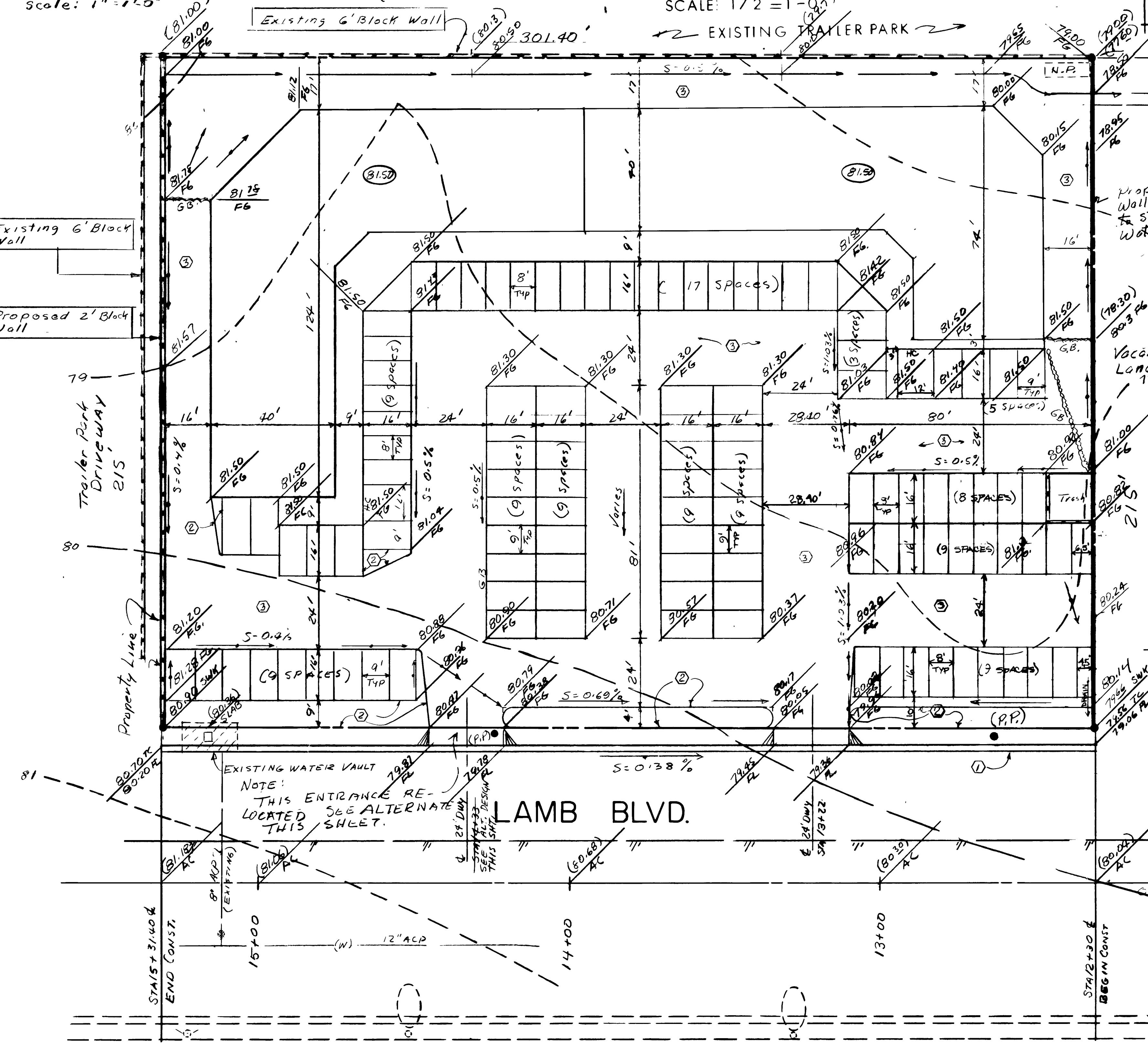
CONSTRUCTION NOTES

- 1. CONSTRUCT 24" "L" TYPE CURB & GUTTER
- 2. CONSTRUCT "A" TYPE CURB
- 3. CONSTRUCT 2" A.C. PAVEMENT OVER 10" TYPE II GRAVEL BASE
- 4. CONSTRUCT AC GUTTER

EARTHWORK
EARTHWORK QUANTITIES WITH NO SHRINKAGE OR SUBSIDENCE EQUALS:
CUT: 797 CU.YDS.
FILL: 2318 CU.YDS.
RECOMPACTED: 192 CU.YDS.

PARKING REQUIREMENTS
RESTAURANT - BAR 4200 SF @ 1 SPACE PER 50 SF
RESTAURANT @ 1 SPACE PER EMPLOYEE
RETAIL 10800 SF @ 1 SPACE PER 500 SF
DESIGNATED PARKING TOTAL SPACES
RETAIL SPACES 1 THROUGH 22
RESTAURANT - BAR SPACES 23 THROUGH 110

APPROVAL
[Signature] 9-11-07
DATE
CITY OF LAS VEGAS
LAND DEVELOPMENT
ENGINEER



SHAUNA PLAZA
LAS VEGAS - NEVADA
FOR
LUCKY MILLER
PAVING AND GRADING
PLAN
BEN LEWIS
745 WEST SUNSET ROAD, STE. 3
PHONE (702) 564-1553 BY HRC

