

SHEET INDEX

REMOVAL ITEMS:

- (R1) REMOVE EX. 8" SS PIPE
- (R2) REMOVE EX. SSMH

CONSTRUCTION NOTES:

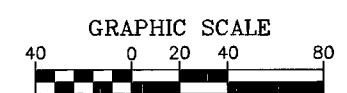
- (1) 8" PVC SEWER TO BE CONCRETE ENCASED SIMILAR TO DCSWCS SD-20 BETWEEN SSMH

EXISTING UTILITIES NOTE:

CONTRACTOR SHALL VERIFY ALL HORIZONTAL AND VERTICAL LOCATIONS OF EXISTING FACILITIES BEING TIED INTO OR CROSSING PRIOR TO ANY WORK BEING DONE. CONTRACTOR SHALL COORDINATE ANY DISCREPANCIES WITH THE ENGINEER.

PIPE QUANTITIES NOTE:

LINEAR FOOTAGE (L.F.) SLOPES AND INVERTS OF SANITARY SEWER PIPES AS SHOWN ON THE PLANS ARE CALCULATED HORIZONTALLY FROM CENTERLINE OF MANHOLE TO CENTERLINE OF MANHOLE



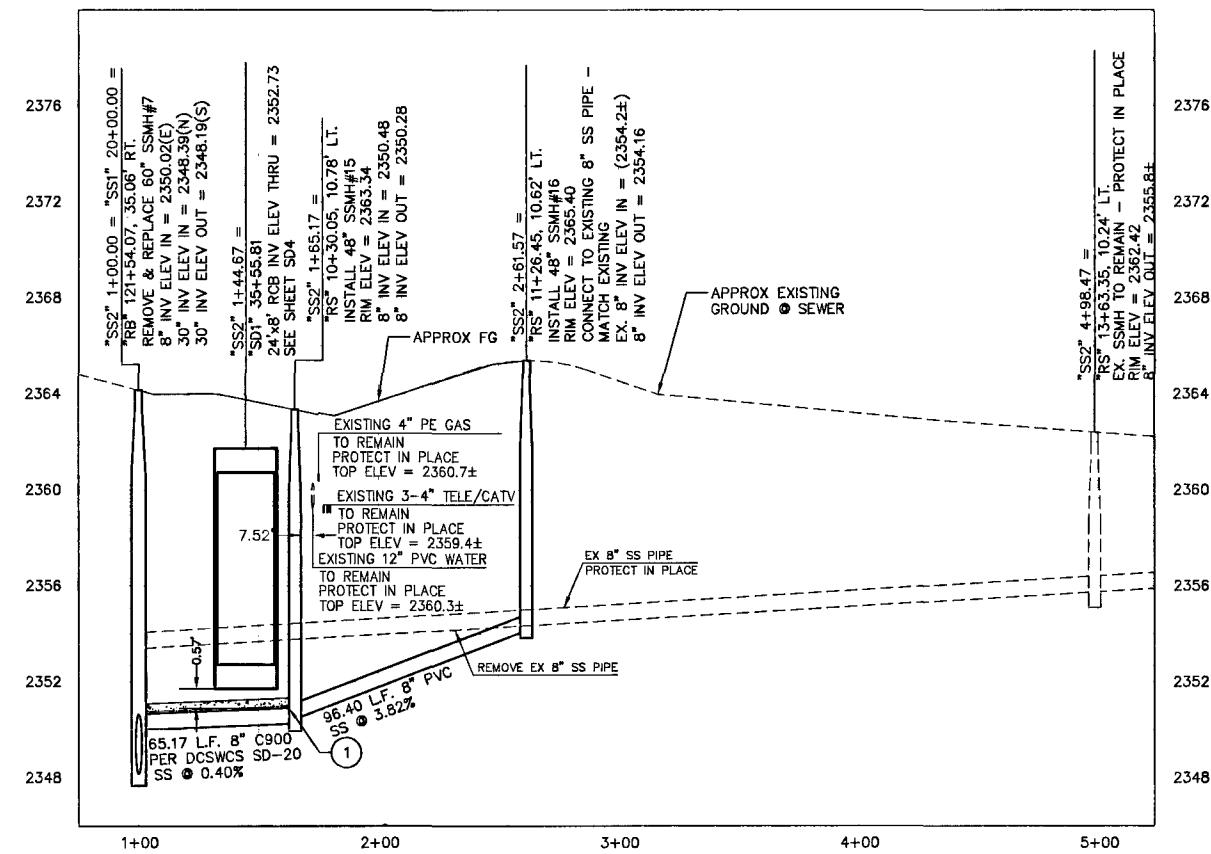
APPROVED

[Signature] 6-17-09
DATE
LAS VEGAS VALLEY WATER DISTRICT
PROJECT #114800

CALL SOUTHWEST GAS AT 365-2296 FOR STANDBY WHEN EXCAVATING OVER OR NEAR HIGH PRESSURE GAS LINES

AVOID OVERHEAD POWER LINE CONTACT IT'S COSTLY
Call before you Overhead
1-702-227-2929
NV ENERGY ENVIRONMENT AND SAFETY SERVICES DEPARTMENT

Call before you Dig
Avoid cutting underground utility lines, it's costly.
Call 811



118624

PUBLIC WORKS DEPARTMENT 400 E. STEWART AVE. LAS VEGAS, NV 89101 702-258-8272		777 SOUTH RAINBOW BOULEVARD LAS VEGAS, NEVADA 89146-5148 PH. (702) 873-7500 FAX (702) 362-2597 WEB SITE: WWW.PWD.COM	
SANITARY SEWER RELOCATION PLAN AND PROFILE "SS2" 1+00.00 TO "SS2" 5+00.00		LAS VEGAS WASH - MIDDLE BRANCH RAINBOW STORM DRAIN ELKHORN TO GRAND TETON	
DRAWN BY: KAS	DESIGNED BY: DWB	CHECKED BY: KDC/TMM/CH	PROJECT NO.: 8952
JUNE 15, 2009	JUNE 15, 2009	JUNE 15, 2009	SCALE: HORIZ. 1"=40' VERT. 1"=4'
SHEET SS8 54 OF 70 SHEETS DRAWING NO. 731-87-1			

H#23161