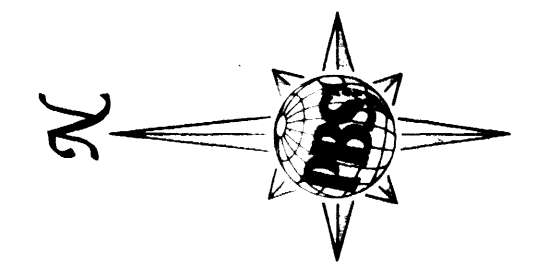
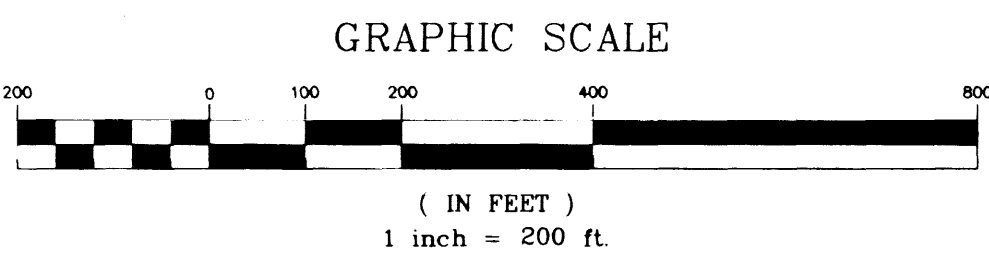


BASIS OF BEARING

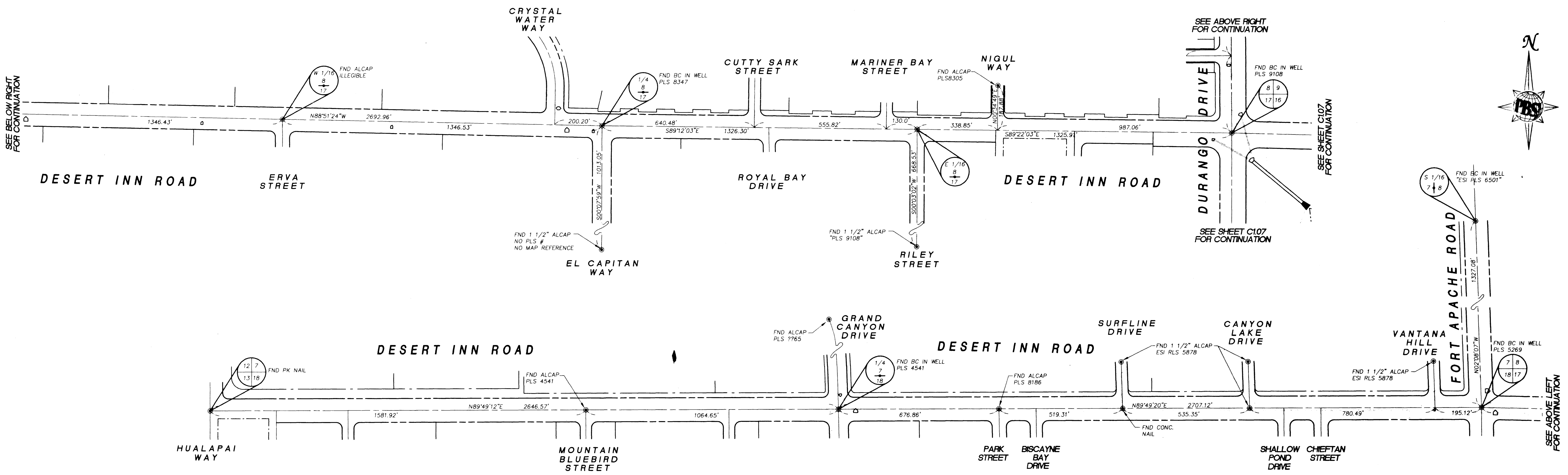
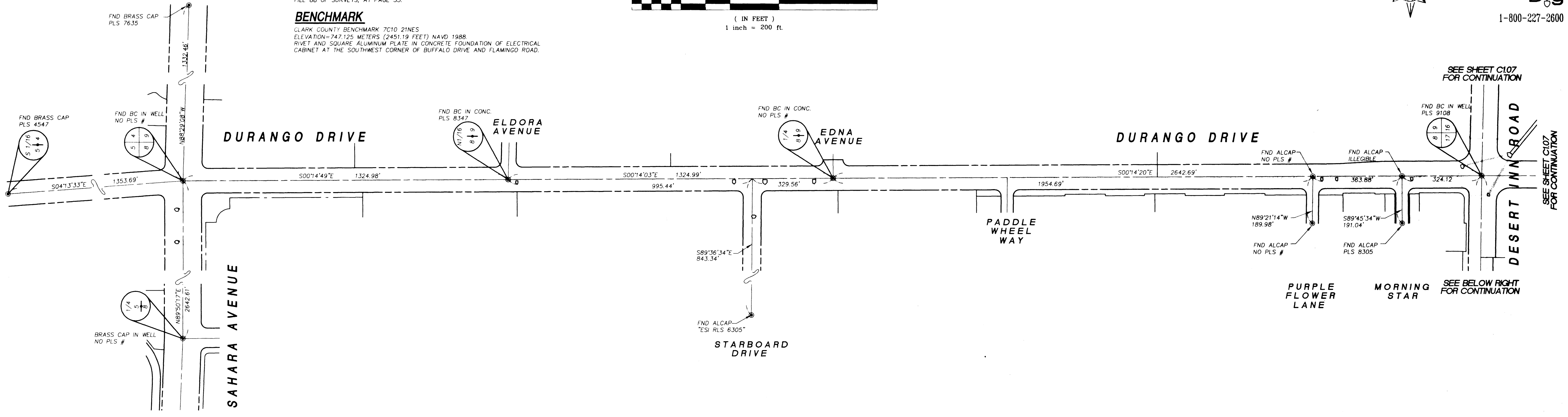
THE BASIS OF BEARINGS FOR THIS PROJECT IS GRID NORTH AS DEFINED BY THE NEVADA COORDINATE SYSTEM OF 1983, EAST ZONE (2701), BASED UPON CLARK COUNTY GIS STATIONS 822, 838, AND 939, AS SHOWN ON A RECORD OF SURVEY ON FILE IN THE CLARK COUNTY, NEVADA RECORDER'S OFFICE, IN FILE 88 OF SURVEYS, AT PAGE 53.

BENCHMARK

CLARK COUNTY BENCHMARK 7C10 21NES
ELEVATION = 747.125 METERS (2451.19 FEET) NAVD 1988.
RIVET AND SQUARE ALUMINUM PLATE IN CONCRETE FOUNDATION OF ELECTRICAL CABINET AT THE SOUTHWEST CORNER OF BUFFALO DRIVE AND FLAMINGO ROAD.



Call before you Dig
1-800-227-2600



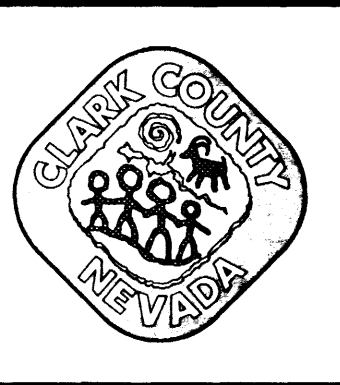
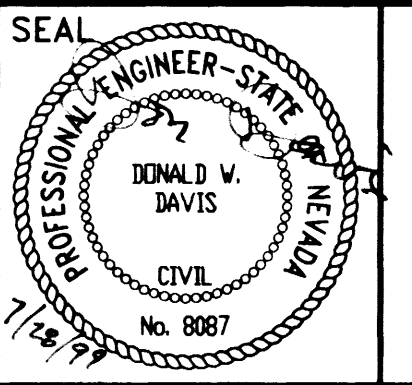
REVISIONS				
REV.	DESCRIPTION	BY	DATE	APPROVAL

DESIGNED BY: A. SPATA
DRAWN BY: A. SPATA
CHECKED BY: D. DAVIS
DATE: JULY 28, 1999

JOB NO.: 51516
DRAWING NO.: 516-3106
SCALE: HORIZ.: 1"=200'
VERT.:

PBS&J
ENGINEERING • PLANNING • SURVEYING • CONSTRUCTION SERVICES

901 North Green Valley Pkwy.
Suite 100
Henderson, Nevada 89014
Telephone: 702/263-7275
Fax: 702/263-7200



Department of Public Works

LAKES DETENTION BASIN & ASSOCIATED COLLECTION FACILITIES - PHASE 3
HORIZONTAL CONTROL PLAN
AREA - 1

L-1583

DRAWING NO. 6
C106