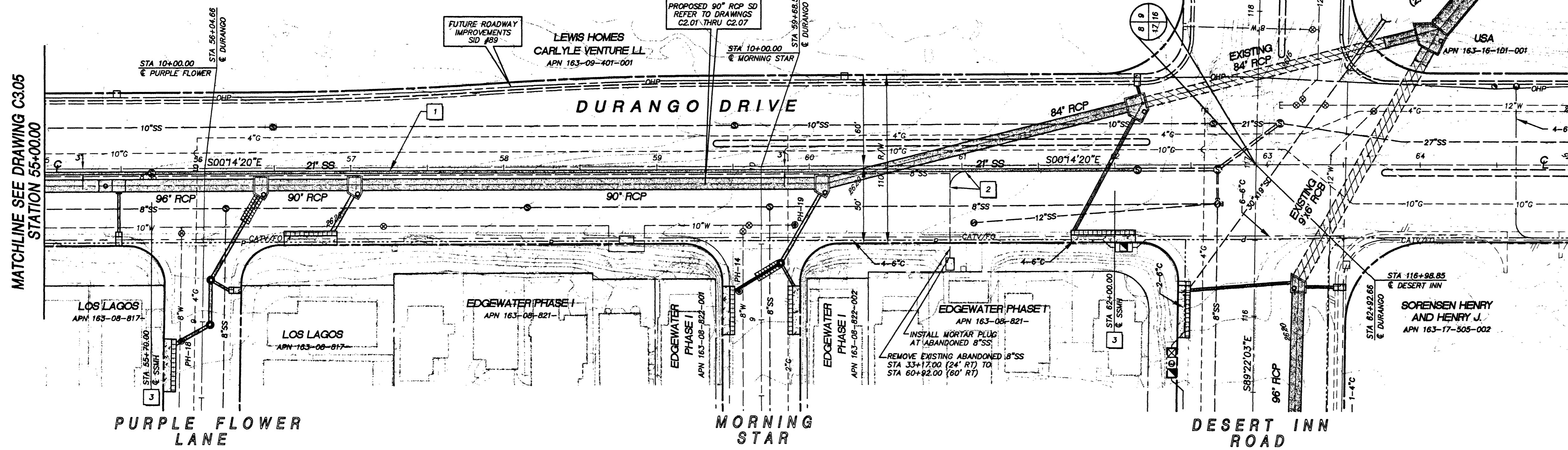


Avoid cutting underground utility lines, if a utility.

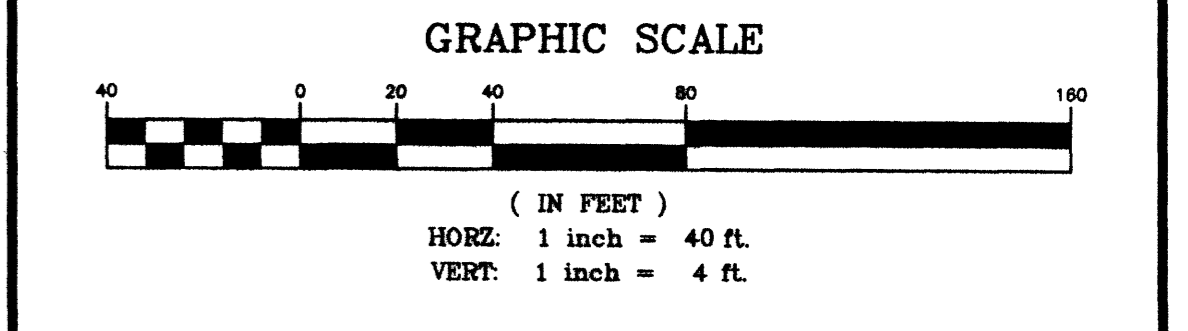
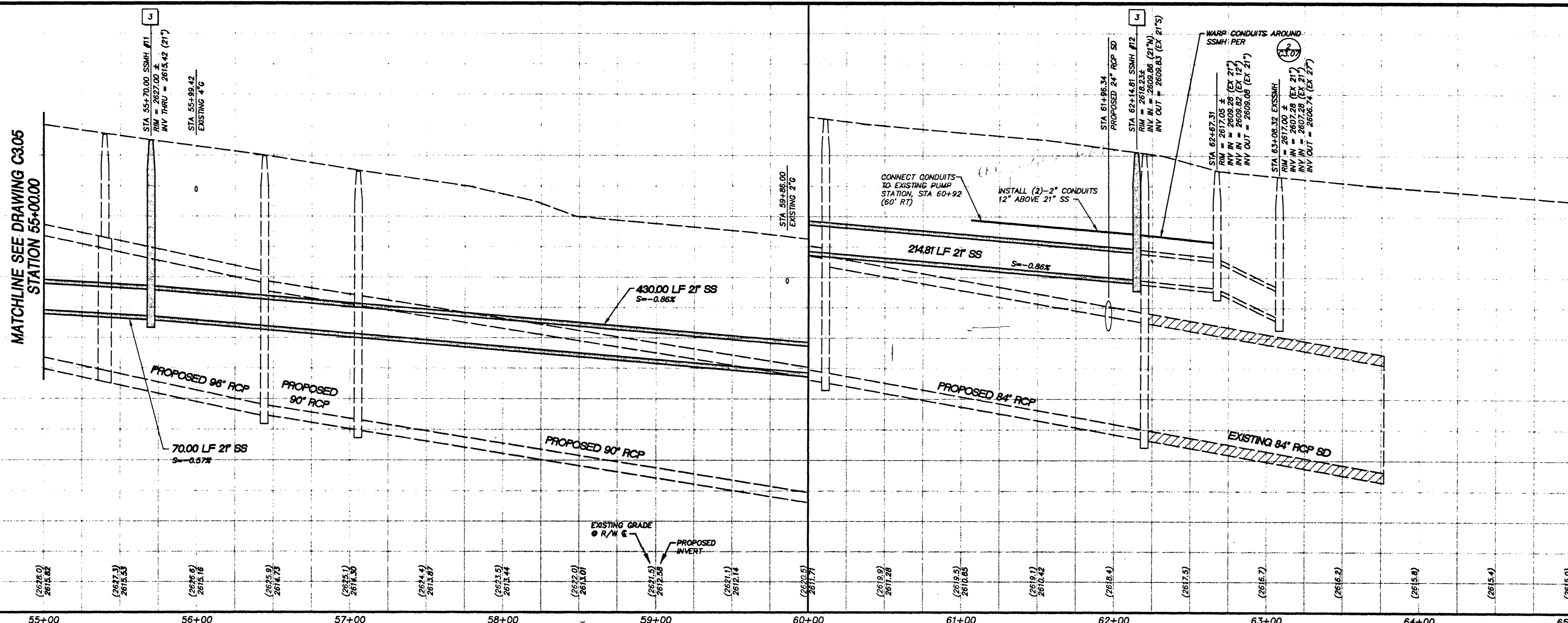
Call before you Dig

1-800-227-2600



KEY NOTES

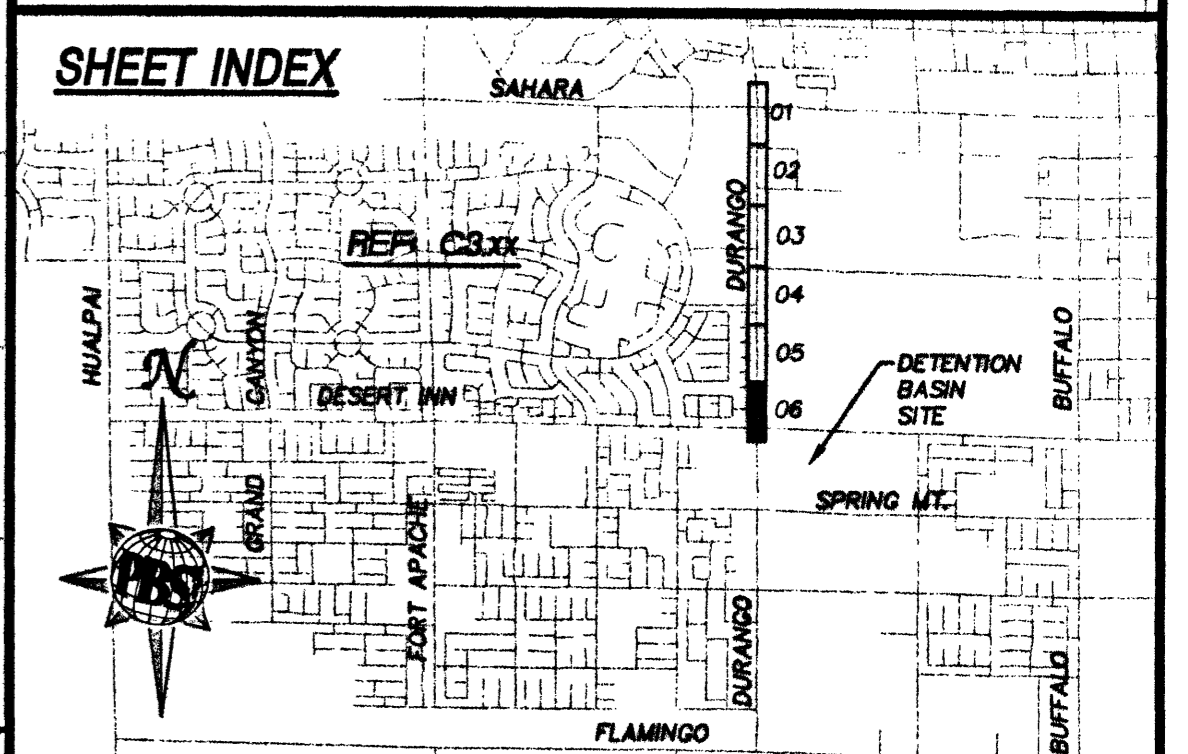
- 1 INSTALL 21" SS PER TRENCH SECTION 1 DWG C3.07
- 2 INSTALL (2)-2" CONDUITS 12" MIN ABOVE 21"SS PER DETAIL 2 DWG C3.07
- 3 INSTALL 60" SSMH PER CCSD SD-1
- 4 SSMH#1: INSTALL ADJUSTABLE SLIDE GATES PER DETAIL 3 DWG C3.07
- 5 SSMH#3: INSTALL ADJUSTABLE SLIDE GATES PER DETAIL 4 DWG C3.07
- 6 FILL WITH SAND, INSTALL MORTAR PLUGS IN ENDS OF EXISTING 15"SS & ABANDON IN PLACE



BASIS OF BEARING
 THE BASIS OF BEARINGS FOR THIS PROJECT IS GRID NORTH AS DEFINED BY THE NEVADA COORDINATE SYSTEM OF 1983, EAST ZONE (2701), BASED UPON CLARK COUNTY GS STATIONS 822, 838, AND 938, AS SHOWN ON A RECORD OF SURVEY ON FILE IN THE CLARK COUNTY, NEVADA RECORDER'S OFFICE, IN FILE 88 OF SURVEYS, AT PAGE 53.

BENCHMARK
 CLARK COUNTY BENCHMARK 7C10 21NES
 ELEVATION=747.125 METERS (2451.19 FEET) NAVD 1988
 RIVET AND SQUARE ALUMINUM PLATE IN CONCRETE FOUNDATION OF ELECTRICAL CABINET AT THE SOUTHWEST CORNER OF BUFFALO DRIVE AND FLAMINGO ROAD.

CAUTION
 EXISTING UTILITIES ARE LOCATED ON THE PLANS FROM A SEARCH OF AVAILABLE RECORDS. CONTRACTOR TO VERIFY LOCATIONS AND DEPTHS PRIOR TO CONSTRUCTION.



REVISIONS				
REV.	DESCRIPTION	BY	DATE	APPROVAL

DESIGNED BY: A. SPATA
 DRAWN BY: A. SPATA
 CHECKED BY: D. DAVIS
 DATE: JULY 28, 1999

JOB NO.: 51516
 DRAWING NO.: 516-C3.06
 SCALE: HORIZ.: 1"=40'
 VERT.: 1"=4'

PBS&J
 ENGINEERING • PLANNING • SURVEYING • CONSTRUCTION SERVICES

901 North Green Valley Pkwy.
 Suite 100
 Henderson, Nevada 89014
 Telephone: 702/263-7275
 Fax: 702/263-7200

CLARK COUNTY
 PROFESSIONAL ENGINEER STATE OF NEVADA
 DONALD W. DAVIS
 CIVIL
 No. 8087

Department of Public Works

LAKES DETENTION BASIN & ASSOCIATED COLLECTION FACILITIES - PHASE 3
DURANGO SANITARY SEWER SYSTEM
PLAN AND PROFILE STA 55+00.00 TO STA 65+00.00

L-1583
 DRAWING NO. 48
 C3.06