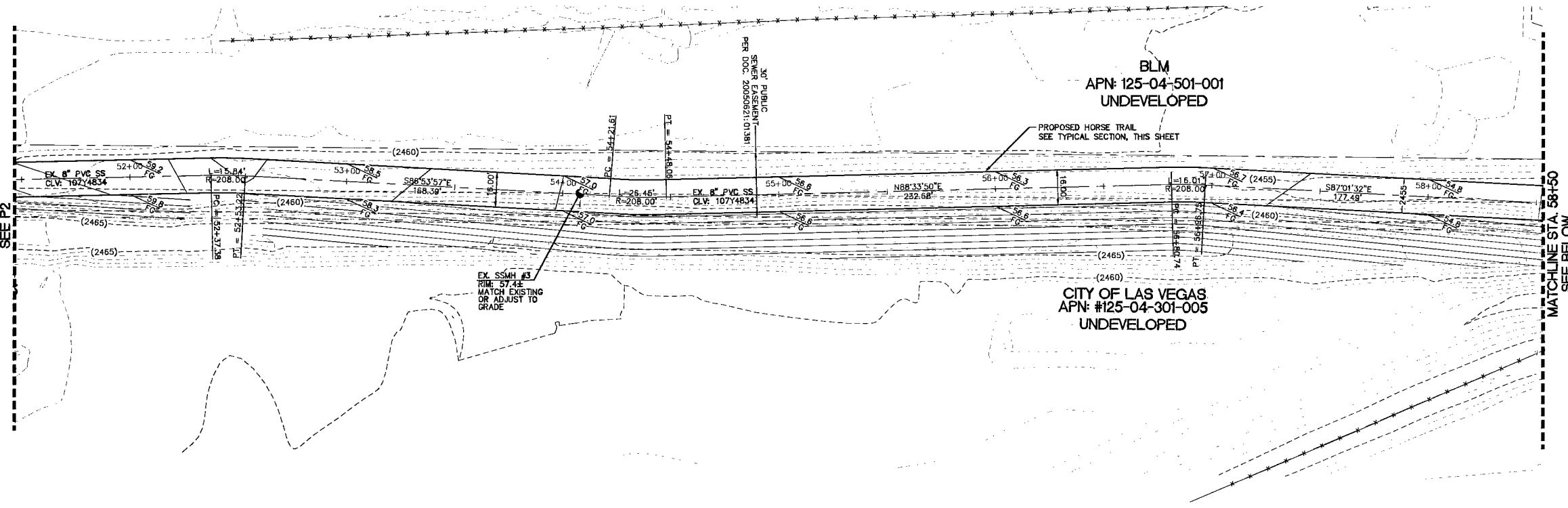
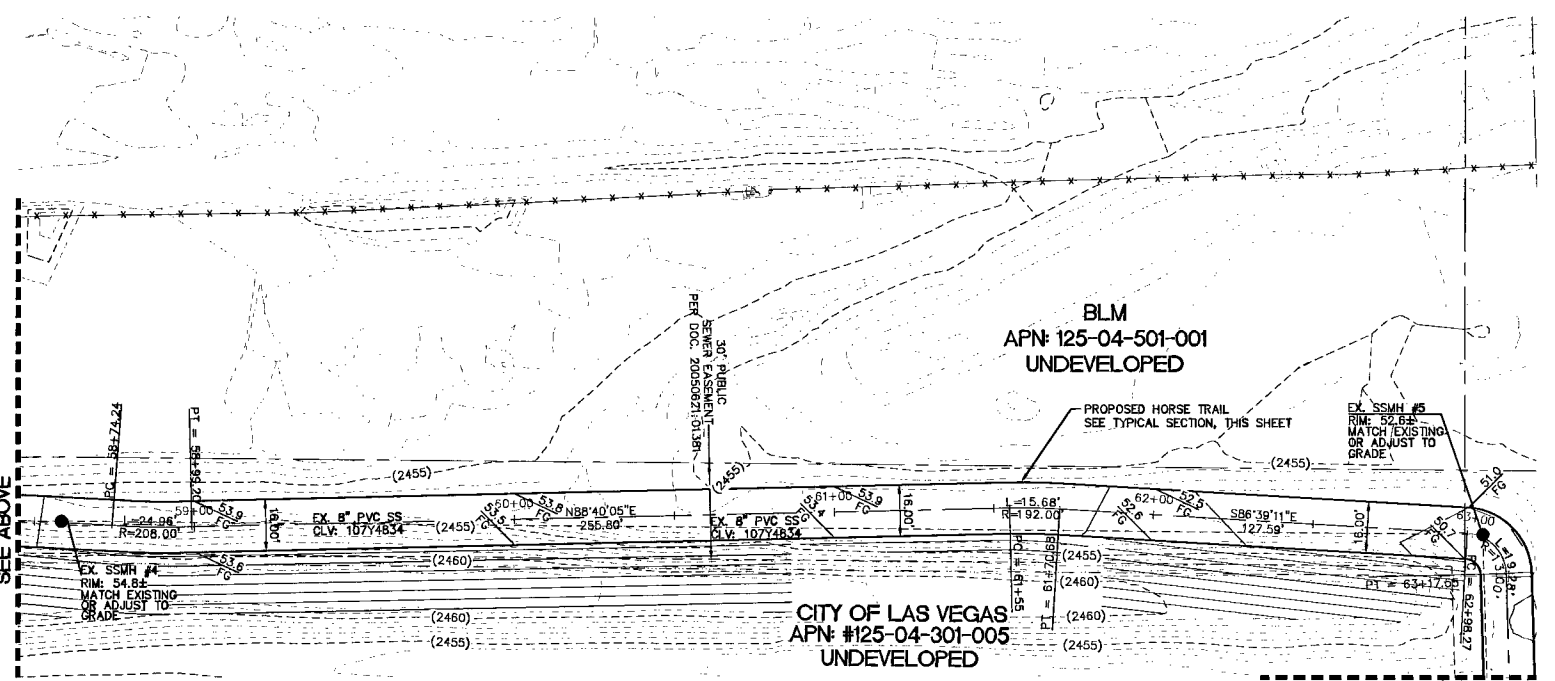


MATCHLINE STA. 51+50
SEE P2

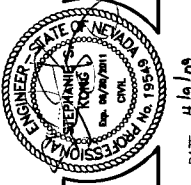
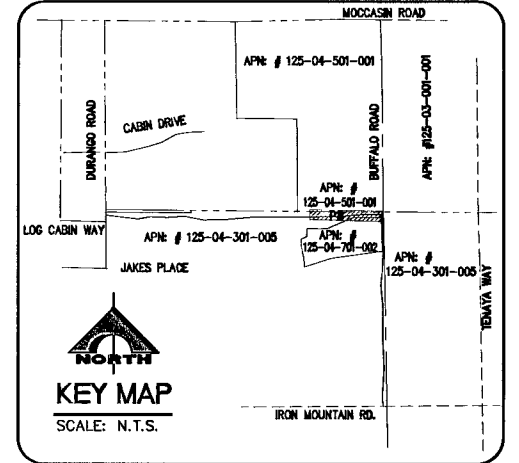


MATCHLINE STA. 58+50
SEE BELOW

MATCHLINE STA. 58+50
SEE ABOVE



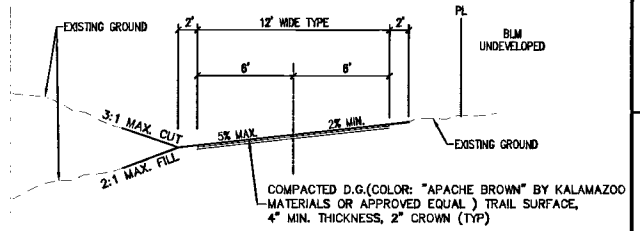
MATCHLINE STA. 63+50
SEE P4



DATE: 4/1/01

DESIGN:	HAN
DRAWN:	
CHECK:	
ISSUE DATE:	
ISSUE EDITOR:	
PLOT DATE:	04-09-09
FILE NAME:	07-44-21

G.C. WALLACE COMPANIES
 ENGINEERS | PLANNERS | SURVEYORS
 6655 S. CIMARRON ROAD, LAS VEGAS, NV 89113
 T: 702.804.2000 F: 702.804.2299 GCWALLACE.COM



CUT/FILL SLOPES

FLOYD LAMB STATE PARK HORSE TRAIL
TYPICAL SECTION (THIS SHEET ONLY) (NOT TO SCALE)

BENCHMARK
 CITY OF LAS VEGAS VERTICAL CONTROL
 CITY OF LAS VEGAS BM #7LV90508
 RIVET & PLATE IN CONC. CYL. NW COR
 LOG CABIN & HOMESTEAD
 ELEVATION: 781.7899 METERS (NAV88)
 2564.92 FEET

Avoid cutting underground utility lines. If a conflict, CALL BEFORE YOU DIG.
Call before you Dig.
 1-800-227-2600
 UNDERGROUND SERVICE (USA)

AVOID HITTING UNDERGROUND TRAFFIC SIGNAL SYSTEMS AND STREET LIGHT SYSTEM CONDUITS. IT'S COSTLY. CALL BEFORE YOU DO UNDERGROUND.
Call before you UnderGround
 1-702-455-7511
 CLARK COUNTY TRAFFIC OPERATIONS
 AND
 1-702-229-6611
 LAS VEGAS AREA COMPUTERIZED TRAFFIC SYSTEM

BASIS OF BEARINGS
 NORTH 00°28'28" WEST BEING THE BEARING OF THE WEST LINE OF THE NORTHWEST QUARTER (NW1/4) OF SECTION 4, TOWNSHIP 19 SOUTH, RANGE 60 EAST, M.D.M. CITY OF LAS VEGAS, CLARK COUNTY, NEVADA, AS SHOWN BY MAP THEREOF ON FILE IN FILE 105, PAGE 09 OF PARCEL MAPS IN THE CLARK COUNTY RECORDER'S OFFICE, CLARK COUNTY, NEVADA.

AVOID HITTING OVERHEAD POWER LINES. IT'S COSTLY. CALL BEFORE YOU DO OVERHEAD.
Call before you OverHead
 1-702-227-2929

FLOOD ZONE NOTE
 THE FEDERAL EMERGENCY MANAGEMENT AGENCY (FEMA) FLOOD INSURANCE RATE MAP (FIRM) CONTAINING COMMUNITY PANEL NUMBER 32003C 1734 E, DATED SEPTEMBER 27, 2002. THE FIRM MAP SHOWS THAT THE PROJECT IS LOCATED WITHIN ZONE X.

NOTICE
 G.C. WALLACE, INC. ASSUME NO RESPONSIBILITY FOR EXISTING UTILITY SHOWN OR NOT SHOWN. THE UTILITIES SHOWN ON THIS DRAWING HAVE BEEN PLOTTED FROM RECORD INFORMATION AND ARE FOR THE CONVENIENCE OF THE CONTRACTOR ONLY. IT IS THE CONTRACTOR'S RESPONSIBILITY TO FIELD VERIFY THE LOCATION AND DEPTH OF ALL RELEVANT UTILITIES PRIOR TO COMMENCEMENT OF CONSTRUCTION. IF A CONFLICT OR DISCREPANCY IS DISCOVERED, THE CONTRACTOR SHALL NOTIFY THE ENGINEER IN WRITING IMMEDIATELY.

LOG CABIN RANCH - HORSE TRAIL
 D.R. HORTON, INC.
 HORSE TRAIL - PLAN III
 STA 51+50 TO STA 63+50

116698