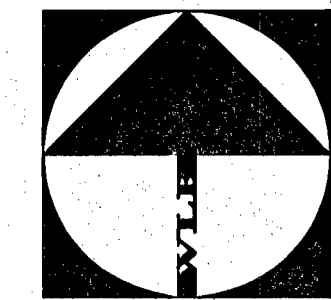
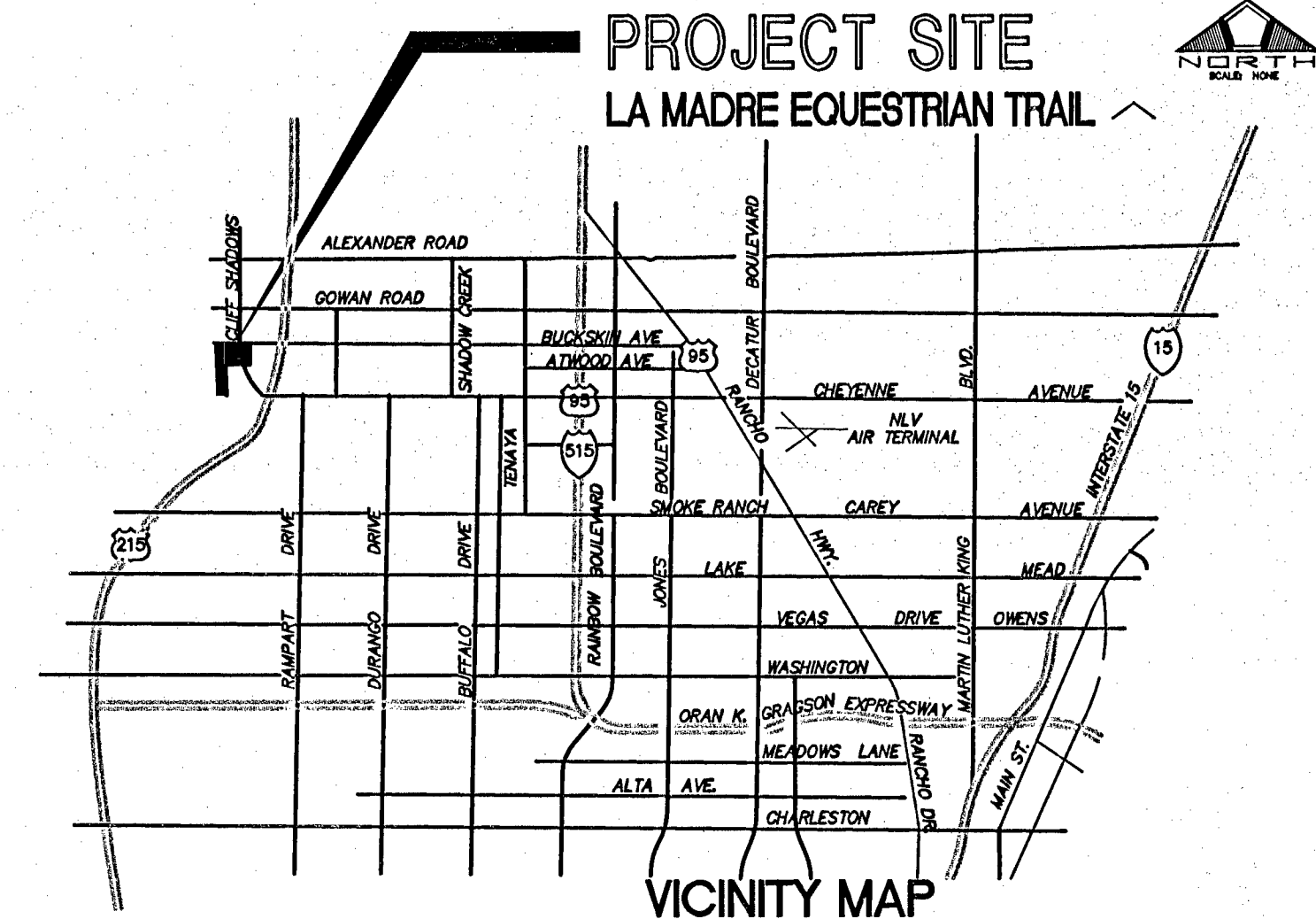
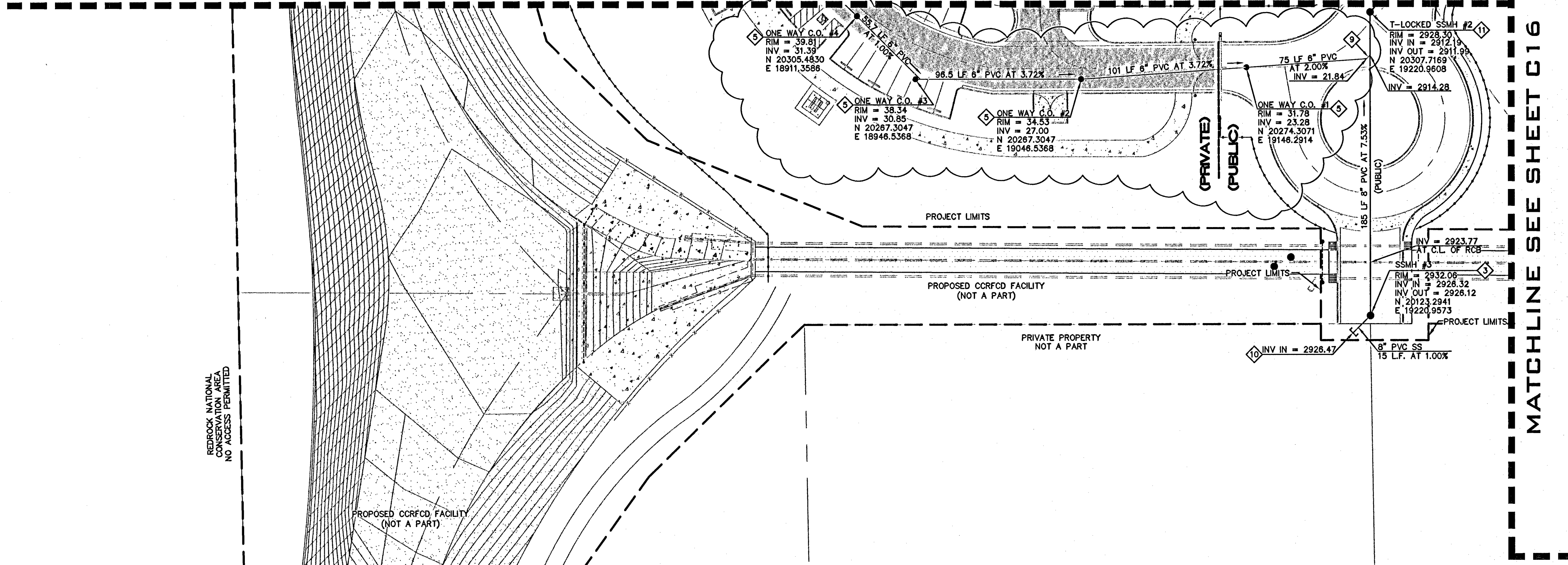


MATCHLINE SEE SHEET C14



SCALE: 1" = 40'
GRAPHIC SCALE
(IN FEET)
1 inch = 40' ft.



VICINITY MAP

LEGEND

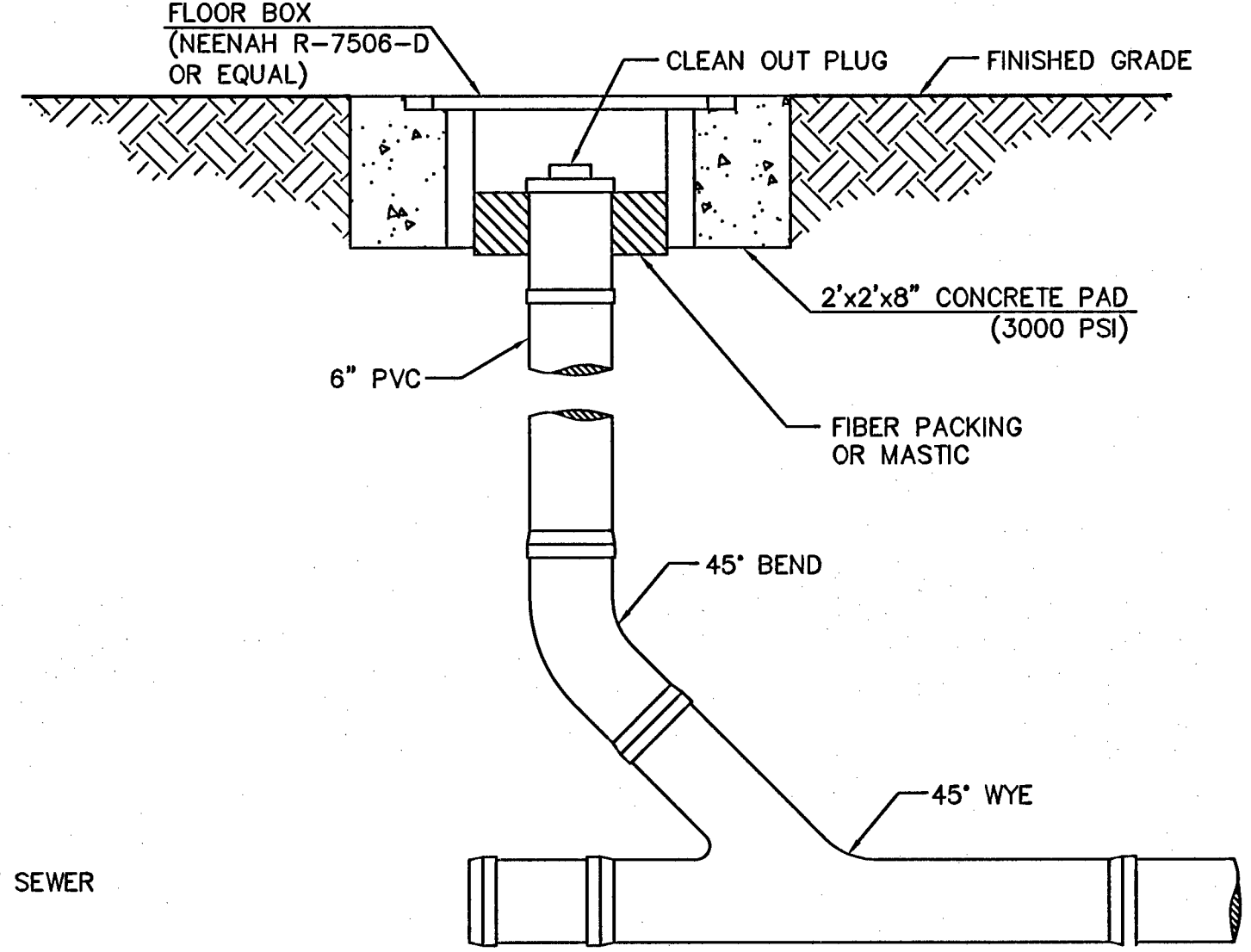
DESCRIPTION	PROPOSED	EXISTING
EASEMENT LINE	---	---
BOUNDARY LINE	---	---
ROW LINE	---	---
CENTERLINE	---	---
CONCRETE CURB	---	---
FINISH FLOOR ELEV.	FF= 221	(FF= 22.1)
BACK WATER VALVE	(BWV)	(BWV)
SLOPE	1.00%	(1.00%)
WALL	---	---
FENCE	---	---
EDGE OF PAVEMENT	---	---
A.C. SAWCUT	---	N/A
FIRELANE	---	N/A
STORM DRAIN MANHOLE	---	---
STORM DRAIN LINE	---	---
WATER LINE	---	---
WATER VALVE	---	---
WATER METER	---	---
FIRE HYDRANT	---	---
RPPA	---	---
DCDA	---	---
SANITARY SEWER LINE	---	---
SANITARY SEWER MANHOLE	---	---
SANITARY SEWER CLEANOUT	---	---
SANITARY SEWER FLOW ARROW	---	---
GAS LINE	---	---

WATER MAIN JOINT DEFLECTION (PVC 4"-24")
PVC PIPE SHALL BE DEFLECTED AT THE JOINT ONLY. THE MAXIMUM ALLOWABLE DEFLECTION SHALL BE (1) DEGREE PER JOINT WITH A MINIMUM RADIUS OF CURVATURE OF 1,150 FEET, PER UDACS 2.08.01 AND 2.06.02
FOR CHANGES IN DIRECTION EXCEEDING THE MAXIMUM ALLOWABLE JOINT DEFLECTION, FITTINGS SHALL BE USED.

CONDITIONAL APPROVAL OF VALVED OUTLET (6" AND LARGER)
THE WATER PLANS SHOW ONE OR MORE VALVED OUTLETS EXTENDING OUT OF PAVED AREAS. INSTALLATION OF THESE OUTLETS IS ACCEPTABLE; HOWEVER, IF THE OUTLETS ARE INCORRECTLY LOCATED OR NOT USED FOR ANY REASON WHEN THE PROPERTY IS ACTUALLY DEVELOPED, THE DEVELOPER SHALL ABANDON THE OUTLETS AT THE CONNECTION TO THE ACTIVE MAIN IN ACCORDANCE WITH THE DISTRICT'S STANDARDS, AND AT THE DEVELOPER'S EXPENSE. APPROVAL OF THE VALVED OUTLET DOES NOT PROVIDE OR IMPLY A WATER COMMITMENT

- CONSTRUCTION NOTES-WATER:**
- 1) INSTALL 1-1/2" METER - UDACS PLATE NO. 1-D (DOMESTIC)
 - 2) INSTALL 1-1/2" RPPA - UDACS PLATE NO. 11-A (DOMESTIC)
 - 3) INSTALL 8" DCDA - UDACS PLATE NO. 11-C (FIRE)
 - 4) INSTALL 8" WATER - PVC (FIRE)
 - 5) INSTALL 1-1/2" WATER - COPPER (DOMESTIC)
 - 6) INSTALL FIRE HYDRANT ASSY. PER UDACS PLATE #7
 - 7) INSTALL 8" GATE VALVE PER UDACS PLATE #8
 - 8) INSTALL 1-1/2" GATE VALVE PER UDACS PLATE #8
 - 9) INSTALL 1-1/2"x45" BEND
 - 10) INSTALL 1-1/2"x 1-1/2"x 1-1/2" TEE
 - 11) INSTALL 1-1/2" CAP
 - 12) INSTALL 8"x1-1/2" TEE W/THRUST BLOCK
 - 13) INSTALL 8"x8" TEE W/THRUST BLOCK
 - 14) INSTALL 8" 5" BEND W/THRUST BLOCK
 - 15) INSTALL 8" CAP AND 2" BLOW-OFF ASSEMBLY PER UDACS PLATE NO. 4A
 - 16) INSTALL 8"x6" TEE W/THRUST BLOCK
 - 17) INSTALL 8"x11-1/4" BEND W/THRUST BLOCK
 - 18) INSTALL 24"x8" TAPPING SLEEVE AND 8" TAPPING VALVE
 - 19) INSTALL 1-1/2"x90" BEND
 - 20) INSTALL 8"x90" BEND W/THRUST BLOCK
 - 21) INSTALL 8"x6"-90" BEND W/THRUST BLOCK
 - 22) NOT USED
 - 23) INSTALL 6" WATER - PVC (FIRE)
 - 24) INSTALL 24"x6" TAPPING SLEEVE AND 6" TAPPING VALVE
 - 25) WHERE WATER AND SEWER ARE CROSSING, SEE UDACS PLATE 15 AND PLATE 16. THE CONTRACTOR SHALL ENSURE COMPLIANCE WITH THE REQUIREMENTS OF UDACS AS STATED ON SHEET C2. CONTRACTOR IS RESPONSIBLE TO QUANTIFY ANY ADDITIONAL REQUIREMENTS THAT THIS NOTE REQUIRES PRIOR TO BIDDING.
 - 26) IF ANY CONFLICTS EXIST, THE CONTRACTOR IS TO NOTIFY THE ENGINEER IMMEDIATELY.
 - 27) EXIST. 24" D.I.P. WATERLINE
 - 28) INSTALL 8" CAP
 - 29) REMOVE CAP AND CONNECT TO EXISTING WATERLINE

- CONSTRUCTION NOTES-SANITARY SEWER:**
- 1) INSTALL 8" PVC SANITARY SEWER (PUBLIC)
 - 2) INSTALL 6" PVC SANITARY SEWER (PRIVATE)
 - 3) INSTALL STD. 48" DIA. MANHOLE (PUBLIC)
 - 4) INSTALL 6" CAP FOR BLDG. CONNECTION (5' FROM BUILDING)
 - 5) 6" PVC ONE WAY SANITARY SEWER CLEANOUT PER DETAIL THIS SHEET
 - 6) 6" PVC TWO WAY SANITARY SEWER CLEANOUT PER DETAIL 18 SHT. C29
 - 7) NOT USED
 - 8) INSTALL 6" CAP FOR FUTURE CONNECTION
 - 9) INSTALL LATERAL DROP PER PLATE SD-18 OF SOUTHERN NEVADA DESIGN AND CONSTRUCTION STANDARDS FOR WASTEWATER COLLECTION SYSTEMS SEE DETAIL A SHEET C20
 - 10) INSTALL 8" CAP FOR FUTURE CONNECTION
 - 11) INSTALL DEEP MANHOLE WITH T-LOCK LINER PER DET. A SHT. C19
 - 12) REMOVE CAP AND CONNECT TO EXISTING SANITARY SEWER



ONE-WAY CLEANOUT DETAIL

NOTES:
1-ALL FENCES WITHIN CITY OF LAS VEGAS BOUNDS WILL BE PER LANDSCAPE DRAWINGS.
2-ALL FENCES WITHIN REGIONAL FLOOD CONTROL FACILITIES WILL BE PER CIVIL DRAWINGS.

NOTE:
ALL SEWER/STORM DRAINS CROSSING WATER LINES MUST CONFORM TO SECTION 2.19 OF THE UNIFORM DESIGN AND CONSTRUCTION STANDARDS FOR POTABLE WATER SYSTEMS (UDACS) FOR WATER AND STORM MAIN CROSSINGS AND CLEARANCES.

NOTE:
APPROVAL OF THESE PLANS FOR THE WATER STUBOUT INSTALLATION WILL NOT BE CONSTRUED AS A COMMITMENT FOR WATER SERVICE TO THIS PROPERTY

REDUCED PRESSURE PRINCIPAL ASSEMBLY (1)-1.5'
APPROVED REDUCED PRESSURE PRINCIPAL ASSEMBLY(S) SHALL BE INSTALLED PER THE UDACS PLATE NO. 11A. NO WATER SHALL BE TAKEN FROM A SERVICE REQUIRING BACKFLOW PREVENTION UNTIL THE REDUCED PRESSURE PRINCIPAL ASSEMBLY HAS BEEN SUCCESSFULLY TESTED BY THE LVVWD.
ANY BLOCK WALL OR FENCE MATERIAL SHALL BE DESIGNED AND CONSTRUCTED AROUND THE OUTSIDE OF THE EASEMENT(S) TO ALLOW THE DISTRICT DIRECT ACCESS FROM THE ADJACENT RIGHT-OF-WAY.
EASEMENTS SHALL BE CLEARLY MARKED OR STAKED PRIOR TO THE START OF CONSTRUCTION. ESN.026 REVISED 6/1/04

DOUBLE CHECK DETECTOR ASSEMBLY (DCDA) (1) 8'
THE DOUBLE CHECK DETECTOR ASSEMBLY SHALL BE INSTALLED IN ACCORDANCE WITH THE UDACS PLATE NO. 11C
ANY BLOCK WALL OR OTHER FENCE MATERIAL SHALL BE DESIGNED AND CONSTRUCTED AROUND THE OUTSIDE OF THE EASEMENT(S) SO AS TO ALLOW THE DISTRICT DIRECT ACCESS FROM THE ADJACENT RIGHT-OF-WAY.
EASEMENTS SHALL BE CLEARLY MARKED OR STAKED PRIOR TO THE START OF CONSTRUCTION. ESN.006 REVISED 6/1/04

APPROVED FOR CONSTRUCTION
LAS VEGAS VALLEY WATER DISTRICT PROJECT # 111129 DATE

BASIS OF BEARING:
SOUTH LINE OF SECTION 12 T205, R59E AS SHOWN PER RECORD OF SURVEY IN FILE 102 PAGE 65 CLARK COUNTY RECORDS (589'39'10"E)

BENCHMARK:
1 LV09 12SSW6 RIVET AND PLATE IN TOP OF CURB ON THE WEST END OF CENTER ISLAND ON CHEYENNE @ THE WEST SIDE OF BELTWAY ELEVATION 2899.35 FEET, 883.7238 METERS.

APPROVALS:
CITY OF LAS VEGAS FIRE DEPARTMENT DATE

RECORD COPY

CAUTION TO CONTRACTOR:
UTILITY LOCATIONS SHOWN HEREON ARE APPROXIMATE ONLY. IT SHALL BE THE CONTRACTOR'S RESPONSIBILITY TO DETERMINE THE EXACT VERTICAL AND HORIZONTAL LOCATION OF ALL EXISTING UNDERGROUND UTILITIES PRIOR TO COMMENCING CONSTRUCTION. NO REPRESENTATION IS MADE THAT ALL EXISTING UTILITIES ARE SHOWN HEREON. THE ENGINEER ASSUMES NO RESPONSIBILITY FOR UTILITIES NOT SHOWN OR UTILITIES NOT SHOWN IN THEIR PROPER LOCATION.

SAFETY ALERT
Call before you Overhead 693-6111
Call before you Dig. 1-800-227-2600 UNDERGROUND SERVICE ALERT

CITY OF LAS VEGAS
400 STEWART AVENUE
LAS VEGAS, NEVADA

UTILITY PLAN SHEET 2

PROJECT: LA MADRE EQUESTRIAN TRAILHEAD

SHEET TITLE: UTILITY PLAN SHEET 2

Drawn by: AP
Designed by: BS
Checked by: SAP
Project No.: 40-0055-0001
Scale: NONE

06/08/2006
06/08/2006
06/08/2006

SEAL
PROFESSIONAL ENGINEER-STATE OF NEVADA
STUART A. POWELL
Exp. 12-31-05
CIVIL
No. 3215

SHEET C15
DRAWING NO. 650.94

BID NO. 051534113 #C-0246-05