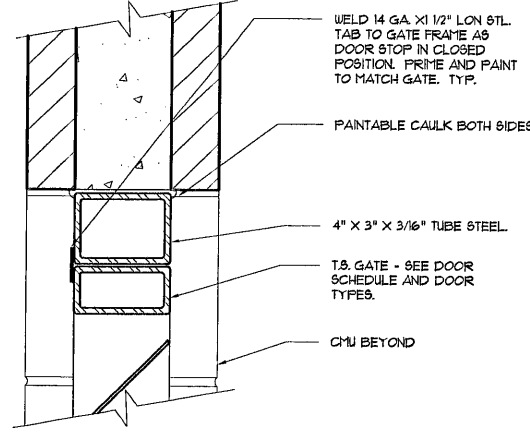


EXTERIOR

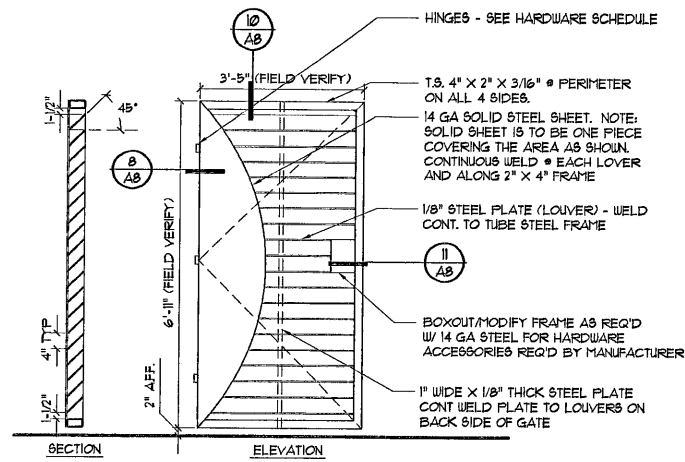
INTERIOR



10 Head @ Mech. Encl. Gate

Scale: 3/4" = 1'-0"

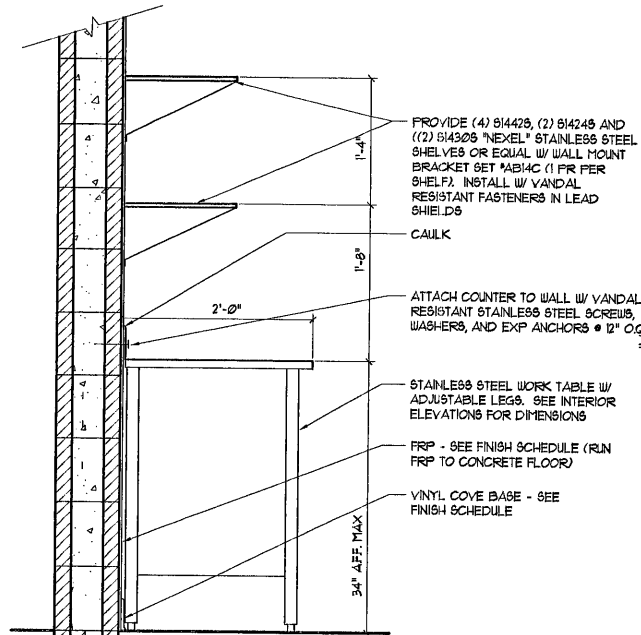
AB-10



7 Gate - Enlarged Elevation

Scale: 1/2" = 1'-0"

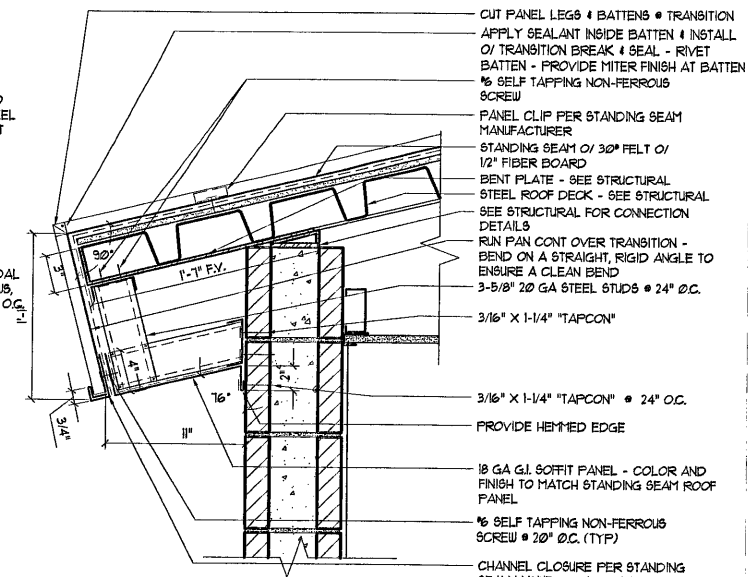
AB-07



4 Counter Detail

Scale: 1" = 1'-0"

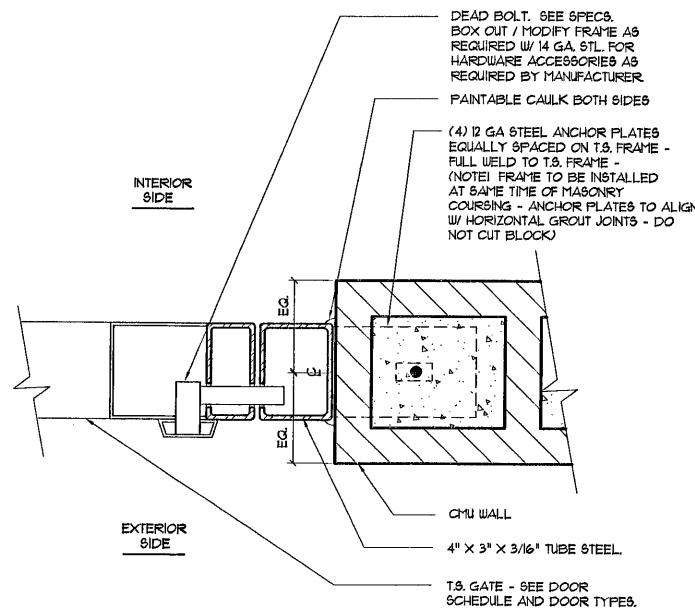
AB-04



1 Eave Flashing Detail

Scale: 1-1/2" = 1'-0"

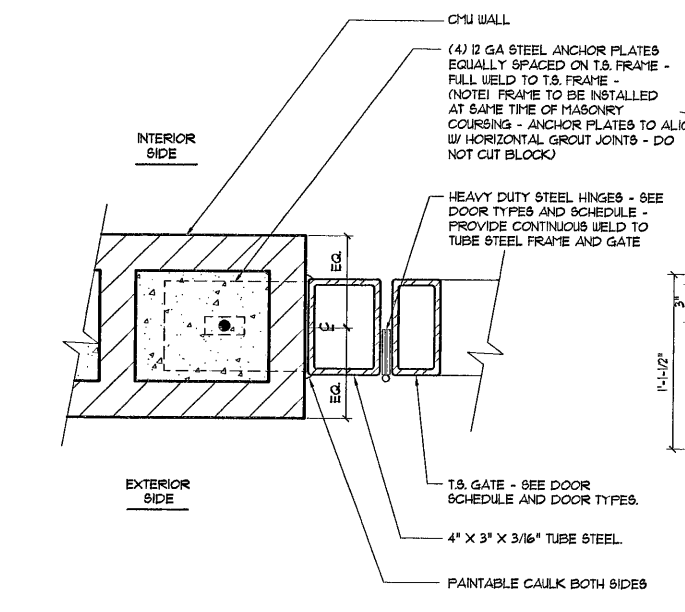
AB-01



11 Jamb Det. @ Mech. Encl. Gate

Scale: 3/4" = 1'-0"

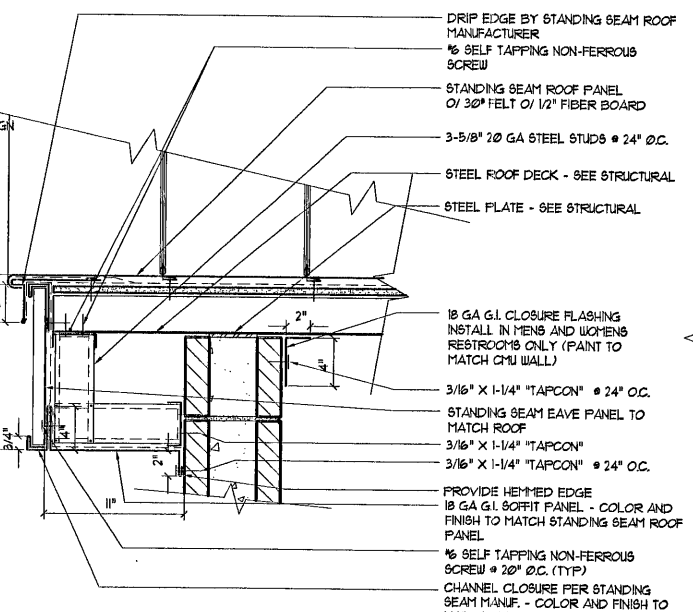
AB-11



8 Jamb Det. @ Gate

Scale: 3/4" = 1'-0"

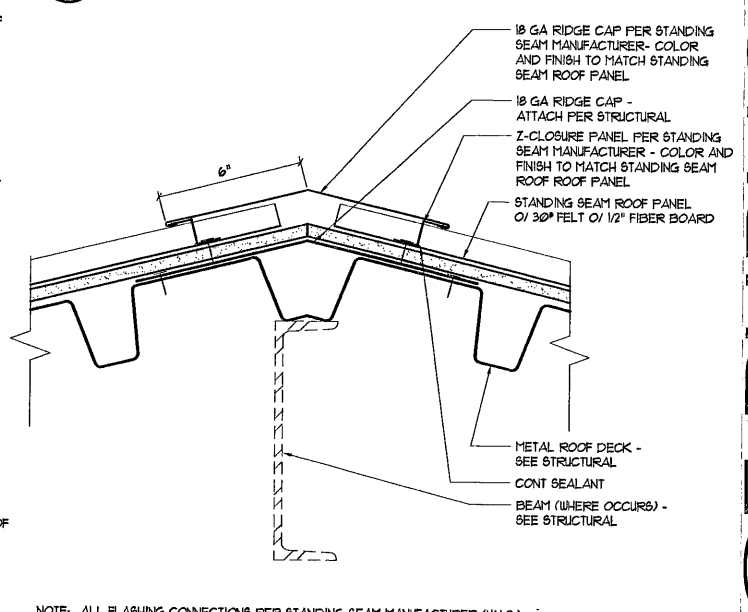
AB-08



5 Gable Flashing Detail

Scale: 1-1/2" = 1'-0"

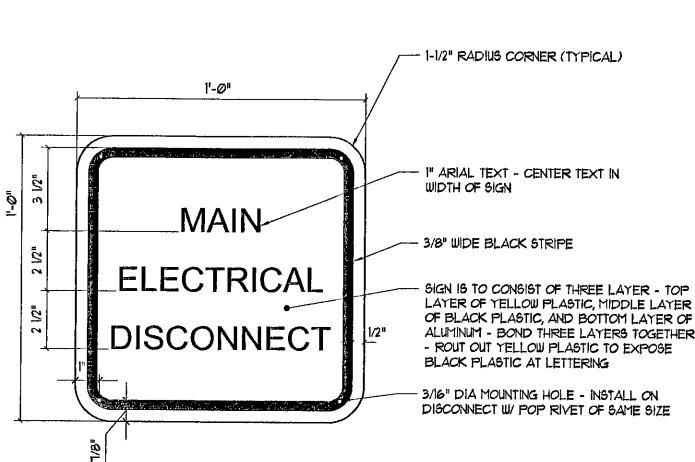
AB-05



2 Ridge Flashing Detail

Scale: 3" = 1'-0"

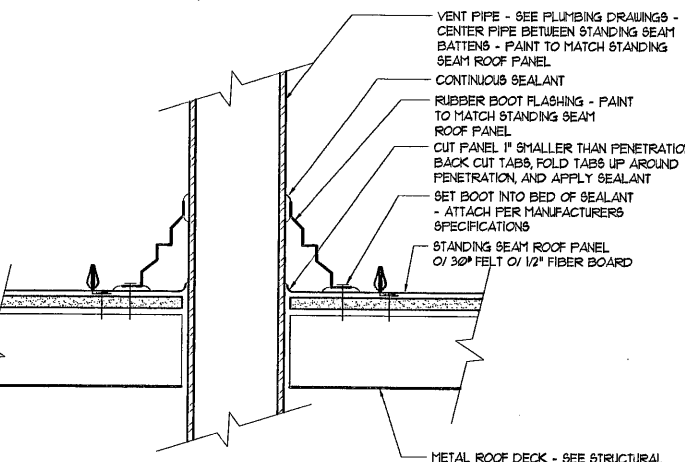
AB-02



12 Main Disconnect Sign

Scale: 3/4" = 1'-0"

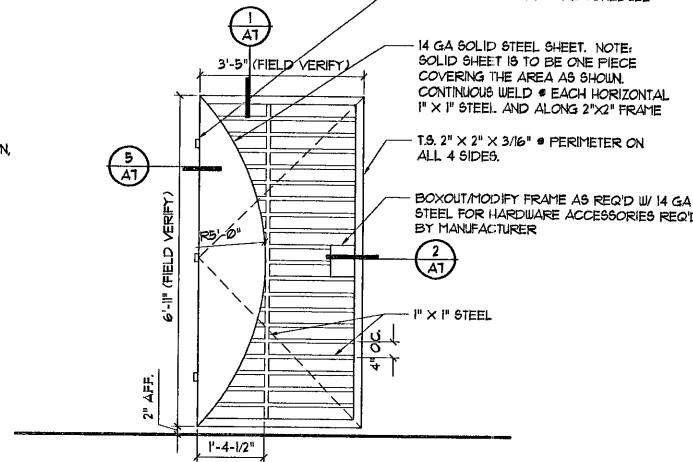
AB-12



9 Pipe Penetration Flashing Detail

Scale: 3/4" = 1'-0"

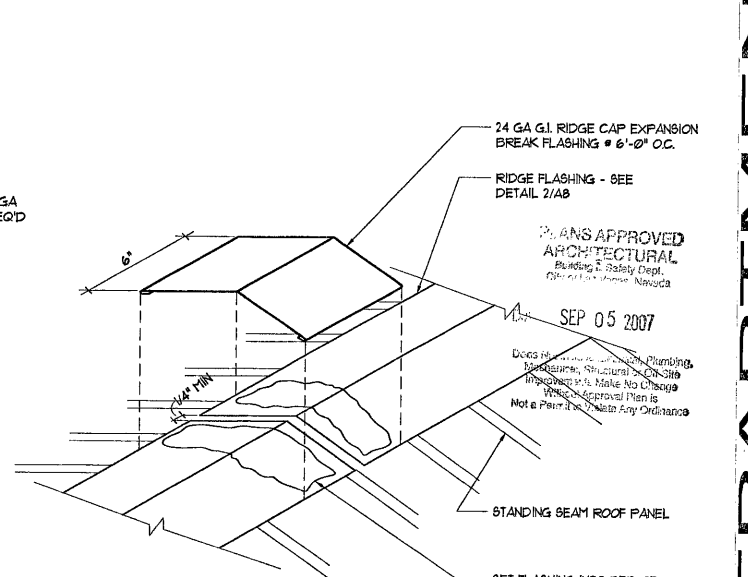
AB-09



6 Gate - Enlarged Elevation

Scale: 1/2" = 1'-0"

AT-06



3 Cap Flashing Detail

Scale: Anamorphic

AB-03



DEPARTMENT OF PUBLIC WORKS
 Lorenzi Park Renovation Phase 1
 Restroom/Concession/Storage Building
 Details

REGISTERED ARCHITECT
 STATE OF NEVADA
 No. 2072
 6-26-07

PLANS APPROVED
 ARCHITECTURAL
 Building & Safety Dept.
 City of Las Vegas, Nevada
 SEP 05 2007

OWNER: CITY OF LAS VEGAS
 DEPARTMENT OF PUBLIC WORKS
 ARCHITECTURAL SERVICES

400 EAST STEWART AVENUE
 LAS VEGAS, NEVADA 89103
 PHONE: (702) 229-6525
 FAX: (702) 394-8846
 TDD: (702) 386-9108

DATE	RC3-AB
DATE	June 2007
SCALE	As Noted
REV NO	01.15341.01
CLY DWG NO	650.19-47

SHEET NO
DRCS-AB

W2517