

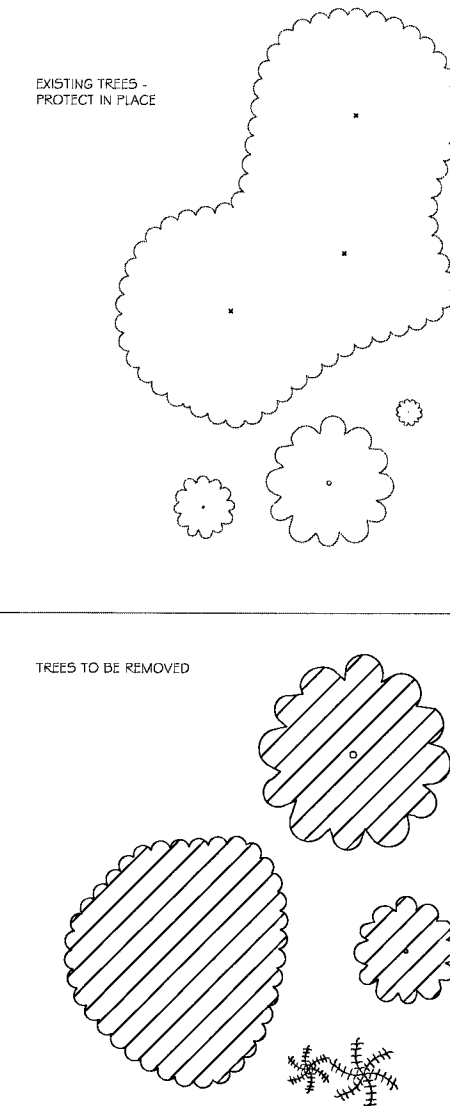
**TREE DEMOLITION LEGEND**

DESCRIPTION	SYMBOL
-------------	--------

NOTE:  
THE PURPOSE OF THE TREE DEMOLITION PLANS IS TO IDENTIFY EXISTING TREES TO REMAIN AND EXISTING TREES TO BE REMOVED. SEE CIVIL DEMOLITION PLANS FOR ALL OTHER DEMOLITION INFORMATION.

EXISTING TREES -  
PROTECT IN PLACE

TREES TO BE REMOVED



**TREE PROTECTION NOTES**

- 1) ALL TREES NOTED AS EXISTING ARE TO BE PRESERVED AND PROTECTED IN PLACE, UNLESS HEALTH OF TREE MERITS REMOVAL. CONTRACTOR TO VERIFY WITH OWNER PRIOR TO REMOVAL.
- 2) IF EXISTING TREES ARE DAMAGED DURING DEMOLITION OR CONSTRUCTION, CONTRACTOR MUST REPLACE DAMAGED TREES WITH TREES OF THE SAME GENUS, SPECIES AND SIZE AT THE CONTRACTOR'S EXPENSE.
- 3) CONTRACTOR TO FIELD VERIFY LOCATION OF ALL EXISTING TREES TO REMAIN PRIOR TO DEMOLITION. CONTRACTOR TO TAG ALL TREES TO REMAIN AND ALL TREES TO BE DEMOLISHED FOR APPROVAL BY OWNER'S REPRESENTATIVES PRIOR TO DEMOLITION. TREES TO REMAIN ARE TO BE TAGGED WITH GREEN TAPE AND ALL TREES TO BE REMOVED ARE TO BE TAGGED WITH RED TAPE. DO NOT PAINT TREES.
- 4) CONTRACTOR TO INSPECT THE EXISTING CONDITIONS AND THE HEALTH OF ALL TREES TO REMAIN PRIOR TO DEMOLITION. CONTRACTOR TO IMMEDIATELY NOTIFY OWNER OF ANY FORESEEN PROBLEMS AND/OR CONDITIONS THAT MAY ENDANGER THE TREES TO REMAIN.
- 5) CONTRACTOR TO PROTECT IN PLACE ANY AND ALL MEMORIAL PLAQUES RELATED TO TREES WITH THE TREE THAT IT IS ASSOCIATED WITH. SEE CIVIL AND/OR LANDSCAPE DEMOLITION PLANS FOR APPROXIMATE LOCATION OF MEMORIAL PLAQUES. CONTRACTOR TO VERIFY IN THE FIELD. PLAQUES INDICATED BY THE FOLLOWING SYMBOL: [Symbol]

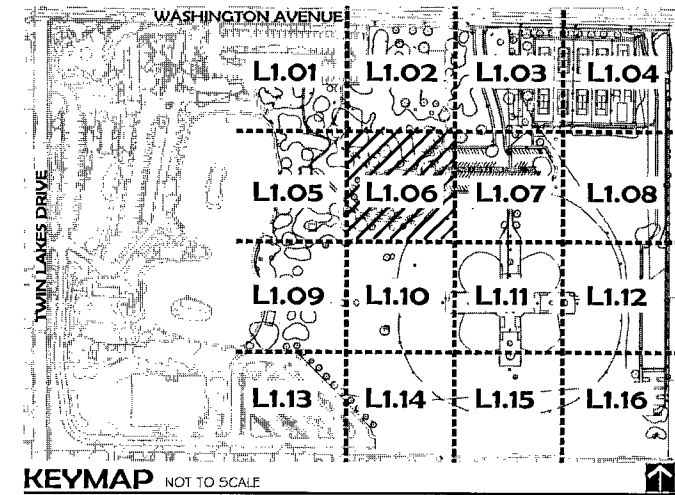
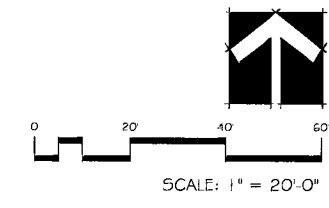
**DEMOLITION NOTES:**

- 1) ALL TREES LOCATED WITHIN LIMITS OF CONSTRUCTION TO REMAIN UNLESS NOTED OTHERWISE.
- 2) CONTRACTOR TO USE CAUTION WHEN DEMOLISHING TURF AND LANDSCAPE. CALL BEFORE YOU DIG AND CALL BEFORE YOU OVER HEAD.
- 3) PRIOR TO BEGINNING WORK, CONTRACTOR TO INVENTORY EXISTING PLANTS AND IRRIGATION. CONTRACTOR TO VERIFY THAT EXISTING TREES TO REMAIN WILL NOT BE DAMAGED BY DEMOLITION OR CONSTRUCTION. CONTRACTOR TO IMMEDIATELY BRING ANY AND ALL DISCREPANCIES TO THE ATTENTION OF THE OWNER'S REPRESENTATIVE FOR RESOLUTION.
- 4) CONTRACTOR TO PROTECT AND PRESERVE EXISTING LANDSCAPE THAT IS NOTED TO REMAIN. CONTRACTOR TO KEEP PLANT MATERIALS THRIVING AND HEALTHY. ANY PLANT MATERIAL DAMAGED DURING OR AS A RESULT OF CONSTRUCTION OR DEMOLITION IS TO BE REPLACED AT THE CONTRACTOR'S EXPENSE. PLANTS ARE TO BE REPLACED WITH TREES AND/OR SHRUBS OF THE SAME SIZE, FORM, GENUS, SPECIES, AND VARIETY. CONTRACTOR TO PROVIDE ADDITIONAL DECOMPOSED GRANITE IN EXISTING LANDSCAPE AREAS THAT ARE DISTURBED AS NECESSARY.
- 5) CONTRACTOR IS TO PROVIDE IRRIGATION TO EXISTING PLANT MATERIAL THAT IS TO REMAIN DURING CONSTRUCTION. CONTRACTOR TO PROVIDE TEMPORARY IRRIGATION SYSTEM IF NECESSARY.
- 6) ANY PLANT MATERIAL OR IRRIGATION COMPONENTS THAT ARE DAMAGED DUE TO CONSTRUCTION ARE TO BE REPLACED AT THE CONTRACTOR'S EXPENSE WITH MATERIALS OF THE SAME SIZE, MODEL, MANUFACTURER, ETC.
- 7) ALL TREES TO BE DEMOLISHED ARE TO HAVE THE ROOTS 1/2" CALIPER OR LARGER REMOVED TO A DEPTH OF 18".
- 8) DISPOSE OF ALL DEMOLISHED MATERIAL OFF SITE IN A LEGAL MANNER.
- 9) DURING BID PROCESS, PRIOR TO THE BEGINNING OF CONSTRUCTION, THE CITY WILL COME IN AND REMOVE ANY EXISTING ELEMENT SCHEDULED TO BE DEMOLISHED THAT THEY WANT TO KEEP. UPON CONTRACT AWARD ALL REMAINING ELEMENTS SCHEDULED FOR DEMOLITION BECOME THE RESPONSIBILITY OF THE CONTRACTOR.
- 10) THIS PLAN IS FOR TREE PRESERVATION AND TREE DEMOLITION ONLY. SEE SHEETS C2.01, C2.02, C2.03, AND C2.04 FOR ADDITIONAL DEMOLITION.

**SAFETY ALERT**  
Call before you dig  
Call before you dig  
Call before you dig  
1-702-227-2829 1-702-227-2800 1-800-227-2800

**RECORD DRAWINGS NOT FOR CONSTRUCTION**

1. TO ALTER THESE DOCUMENTS FOR ANOTHER PROJECT BY ANYONE OTHER THAN THE ORIGINAL ARCHITECT IS A VIOLATION OF NRS 623.
2. THIS RECORD DRAWING HAS BEEN PREPARED IN PART, BASED UPON INFORMATION FURNISHED BY THE GENERAL CONTRACTOR, WHILE THIS INFORMATION IS BELIEVED TO BE RELIABLE, THE DESIGN PROFESSIONAL CANNOT ASSURE ITS ACCURACY, AND THIS IS NOT RESPONSIBLE FOR THE ACCURACY OF THIS RECORD DRAWING OR FOR ANY ERRORS OR OMISSIONS WHICH MAY HAVE BEEN INCORPORATED INTO IT AS A RESULT. THE DESIGN PROFESSIONAL CANNOT AND DOES NOT WARRANT THEIR ACCURACY.
3. INFORMATION THAT MAY BE INCLUDED WOULD BE SIGNIFICANT CHANGES TO PLANTING OR IRRIGATION LAYOUT PLANS AND ASSOCIATED DRAWINGS, MINOR DIMENSION OR CONSTRUCTION DETAIL CHANGES MAY NOT BE INCLUDED.



REVISIONS  
RECORD DRAWING 1-6-08

CONSULTANT  
southwick LA  
702.597.3108  
12 Commerce Center Drive  
Henderson, NV, 89014  
www.southwickla.com

Lorenzi Park Renovations  
Phase 1  
Tree Demolition Plan

OWNER: CITY OF LAS VEGAS  
DEPARTMENT OF PUBLIC WORKS  
ARCHITECTURAL SERVICES

400 EAST STEWART AVENUE  
LAS VEGAS, NEVADA 89101  
PHONE: (702) 229-6535  
FAX: (702) 384-4846  
TDD: (702) 386-9108

DRAWN: SAR  
FILE: 06-083  
DATE: JUNE 2007  
SCALE: AS SHOWN  
JOB NO: 071534.01  
CIV DWG NO: 65073-41  
SHEET NO: L1.06