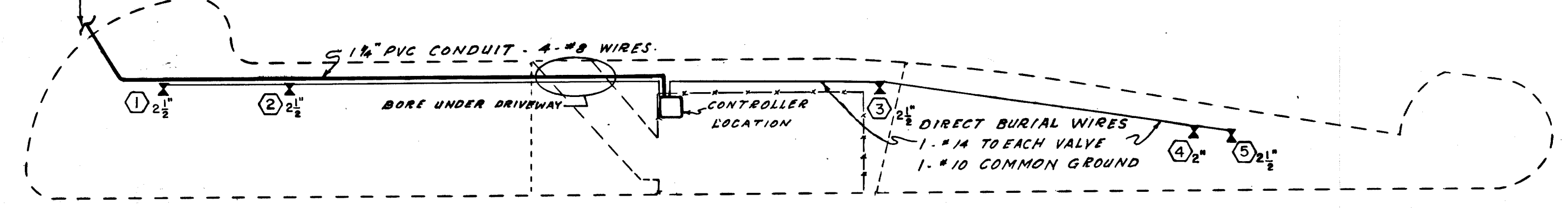


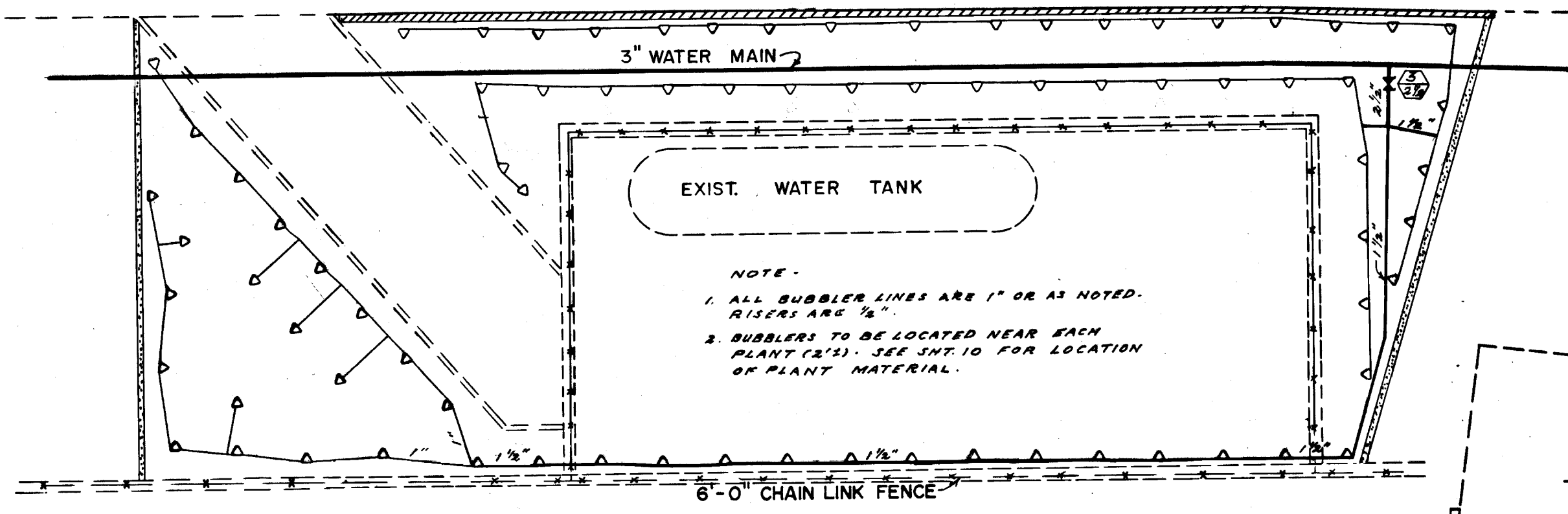
APPROXIMATE QUANTITIES — THIS SHEET			
ITEM	DESCRIPTION	UNIT	QUANTITY
163.403S	3/4" P.V.C. PIPE SCH. 40	L.F.	410
163.404S	1" P.V.C. " " "	L.F.	617
163.405S	1-1/4" P.V.C. " " "	L.F.	290
163.406S	1-1/2" P.V.C. " " "	L.F.	274
163.408S	2" P.V.C. " " "	L.F.	55
163.409S	2-1/2" P.V.C. " " "	L.F.	91
163.410S	3" P.V.C. " " "	L.F.	385
163.511F	POP-LAWN SPRINKLERS — FULL	EA.	26
163.511H	" " " — HALF	EA.	44
163.511Q	" " " — QUARTER	EA.	7
163.511TQ	" " " — 3 QUARTER	EA.	2
163.513	BUBBLERS RAINBIRD 2200 Q	EA.	78
163.602	2" ELECT. VALVE, BUCKNER 54AE	EA.	1
163.602S	2-1/2" ELEC. VALVE, BUCKNER 55AE	EA.	4
163.670	CONC. VALVE BOX W/METAL LID	EA.	5
TOTAL 79			

INSTALL PUMP CONTROL WIRES AND IRRIGATION MAIN IN EXISTING 6" PIPE BLEEVES (SEE SHEET 5, THIS CONTRACT, AND SHEET 10 OF 10, C.L.V. DRWG. # 650.19-25)



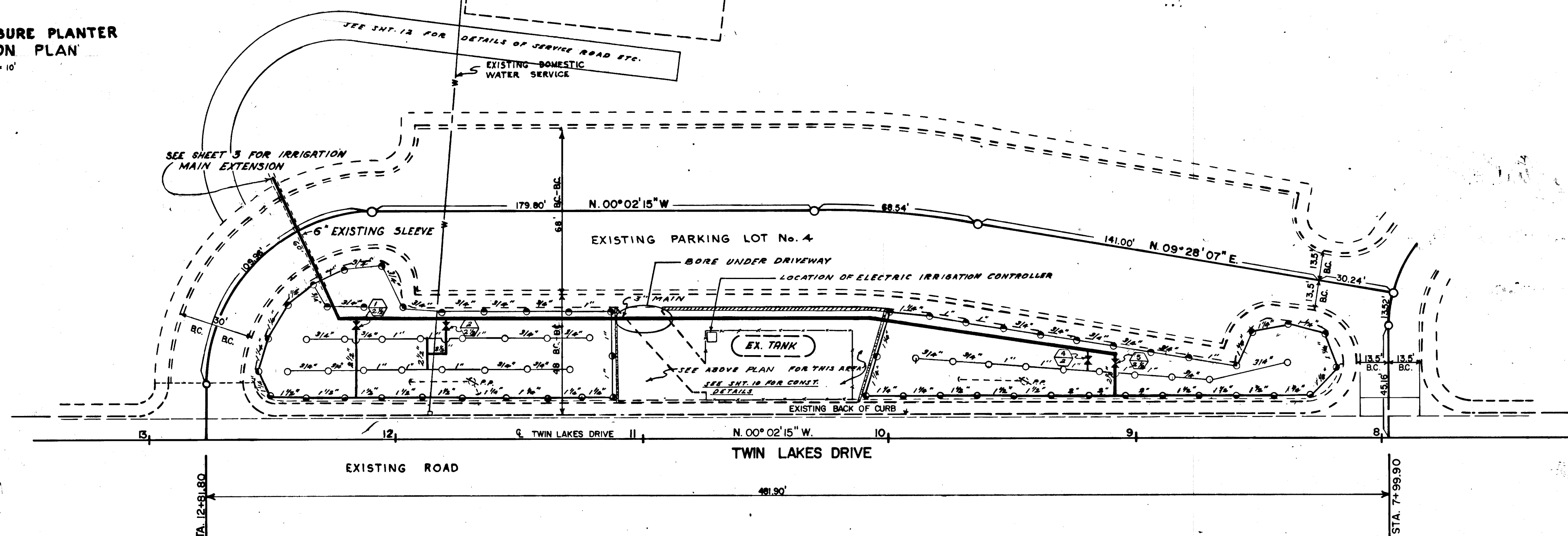
WIRING DIAGRAM  
1" = 30'

FOR IRRIGATION ELECTRICAL QUANTITIES (WIRING & CONTROLLER) SEE SHEET 3



WATER TANK ENCLOSURE PLANTER IRRIGATION PLAN  
1" = 10'

- NOTES:
1. ALL PIPE TO BE SCH. 40 P.V.C.
  2. SPRINKLER HEADS TO BE "SAF-T-LAWN" MODEL GL-71
  3. BUBBLERS TO BE "RAINBIRD" 2200-Q
  4. VALVES TO BE BUCKNER 50E SERIES
- ABOVE ITEMS AS NOTED OR APPROVED EQUAL
5. SEE SHEET 7 FOR IRRIGATION DETAILS
  6. SEE SHEET 10 FOR LANDSCAPING



- LEGEND - THIS SHEET ONLY
- 1/2" PIPE SIZE (IN INCHES)
  - ● ● 1/2, 3/4, 1" & FULL HEADS
  - △ BUBBLER
  - — — EXISTING FENCE
  - ⊕ REMOTE CONTROL VALVE STATION NUMBER
  - ⊕ VALVE SIZE
  - ⊕ REMOTE CONTROL ELECTRIC VALVE

THE CITY ENGINEER HAS REVIEWED THIS PLAN AND THE CONSTRUCTION OF THE SAME SHALL BE THE RESPONSIBILITY OF THE CONTRACTOR. THE CITY ENGINEER'S REVIEW IS FOR TECHNICAL PURPOSES ONLY AND DOES NOT CONSTITUTE A GUARANTEE OF THE ACCURACY OF THE INFORMATION ON WHICH THIS PLAN IS BASED. THE CITY ENGINEER HAS NO RESPONSIBILITY FOR THE CONSTRUCTION OF THE SAME OR FOR THE RESULTS THEREOF.

- APPROVALS
- [Signature]* 1/2/75  
DIR. OF PARKS & CEMETERY DATE
- N/A  
DIR. OF RECREATION DATE
- [Signature]* 2-25-75  
DIR. OF COMM. DEVELOPMENT DATE
- N/A  
ENGINEERING DIV. ENGINEER DATE
- N/A  
TRAFFIC ENGINEER DATE
- [Signature]* 2-28-75  
CONS. DIV. ENGINEER DATE
- [Signature]* 3/3/75  
DEP. DIR. PUBLIC WORKS DATE

CONTRACT DRAWING  
MAR 7 1975

REVISION NO.	DESCRIPTION	BY	DATE	APPROVAL

CITY OF LAS VEGAS NEVADA  
DEPARTMENT OF PUBLIC WORKS  
SERVICES DIVISION  
LORENZI PARK — PHASE III B  
PARKING LOT #4  
IRRIGATION & WIRING PLAN

W.O. NO. 3115 F.B.K. NO. 73-2X DATE 6-3-74 DRAWING NO. 650.19-25A  
SC. (H) 1" = 30' SC. (V) NONE  
DES. C. KAWKOWSKI 6-5-74 FILE NO.  
DR. J. ARNAUD  
APPROVED BY DIRECTOR OF PUBLIC WORKS 3/3/75 SHEET 6 OF 15