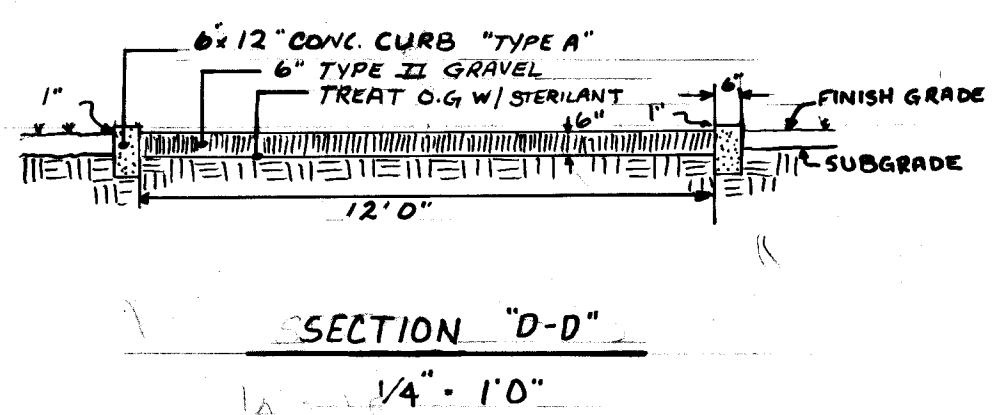
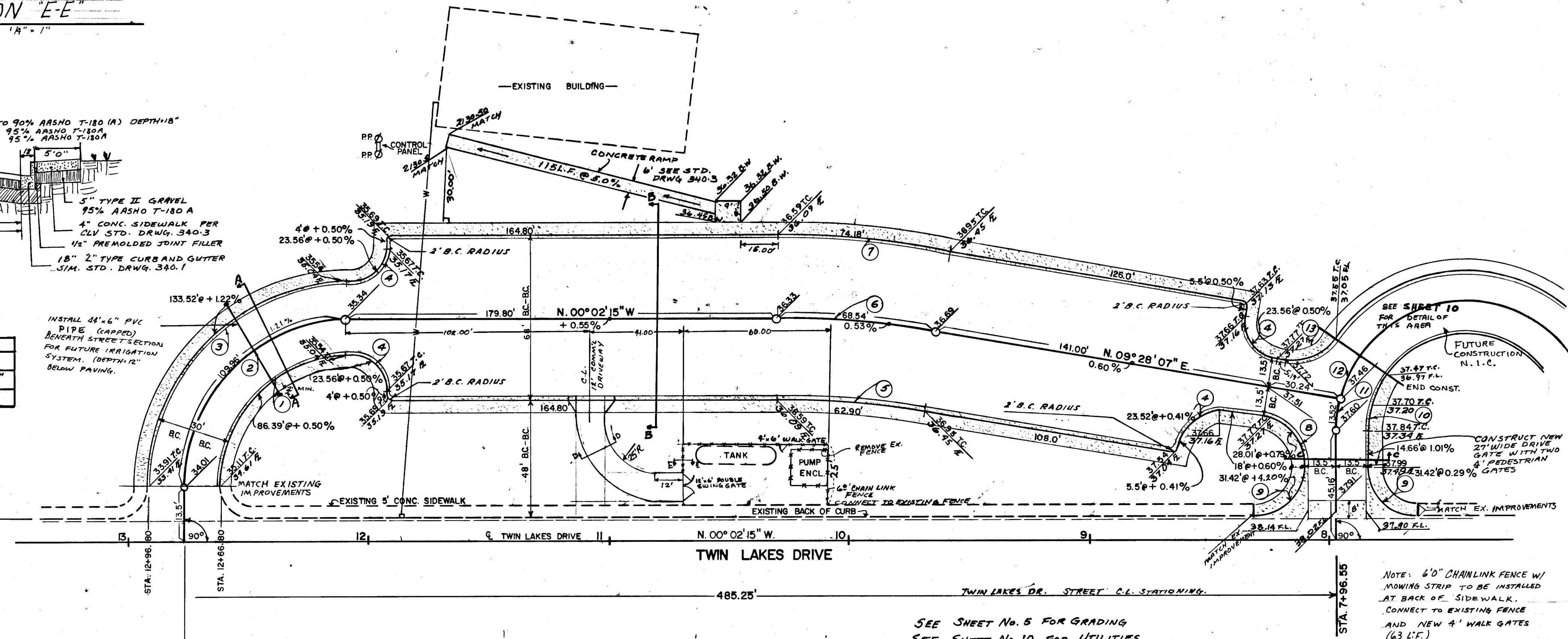
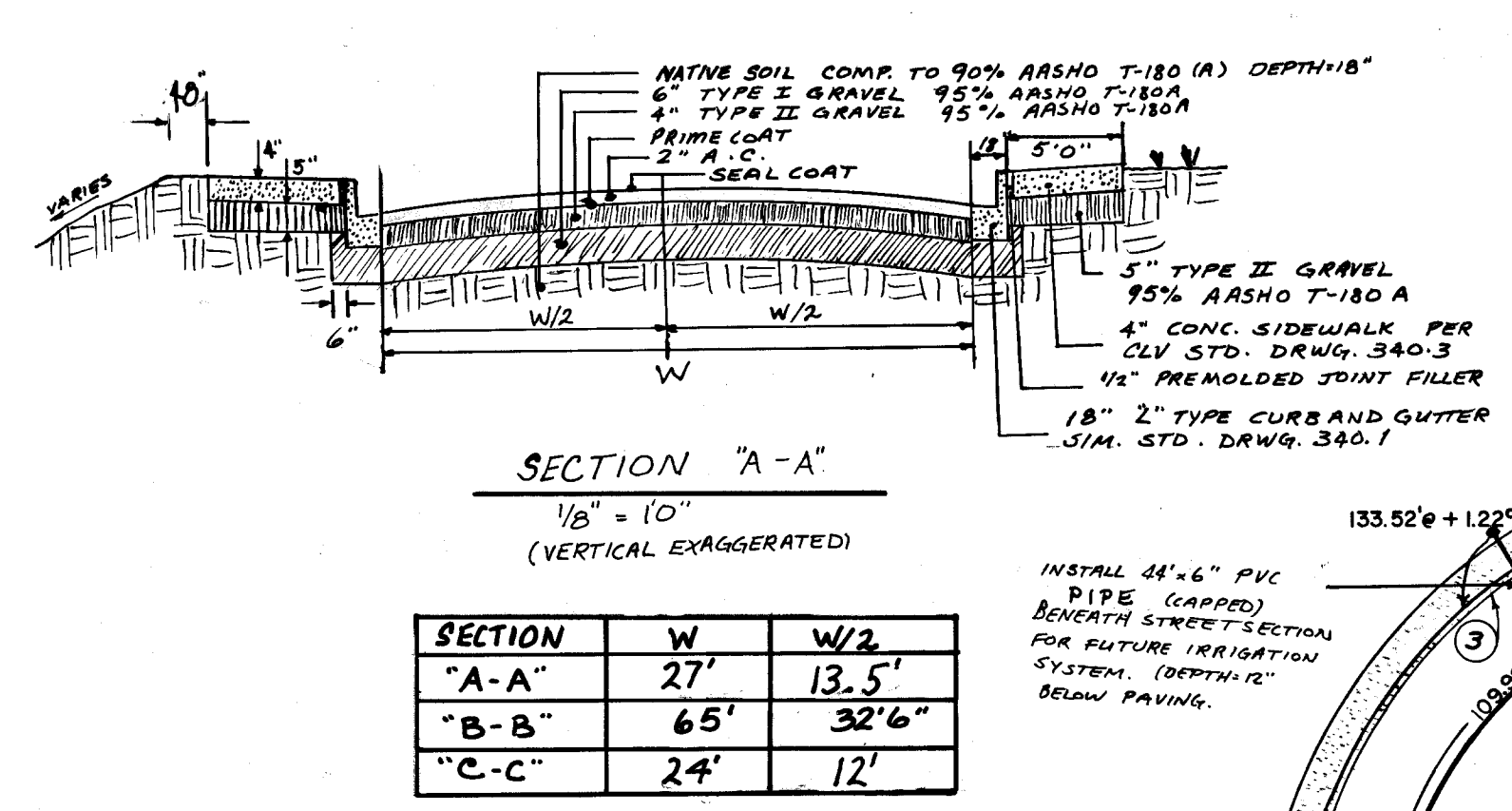
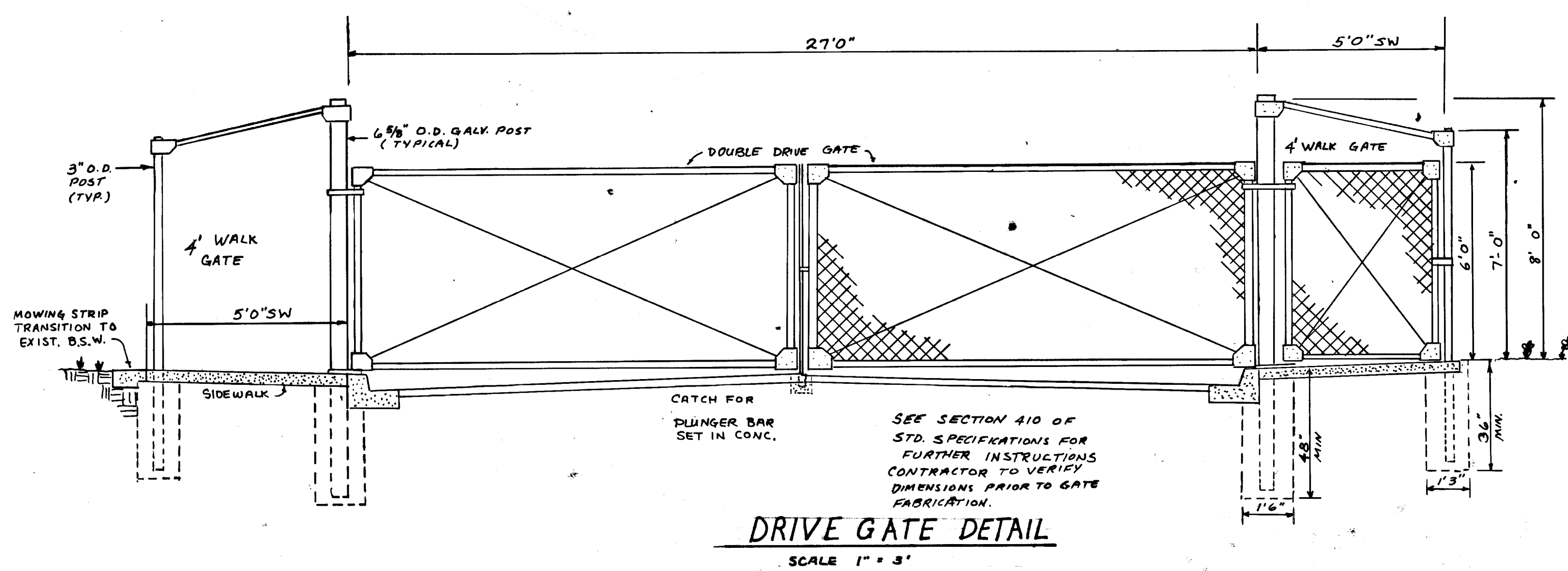
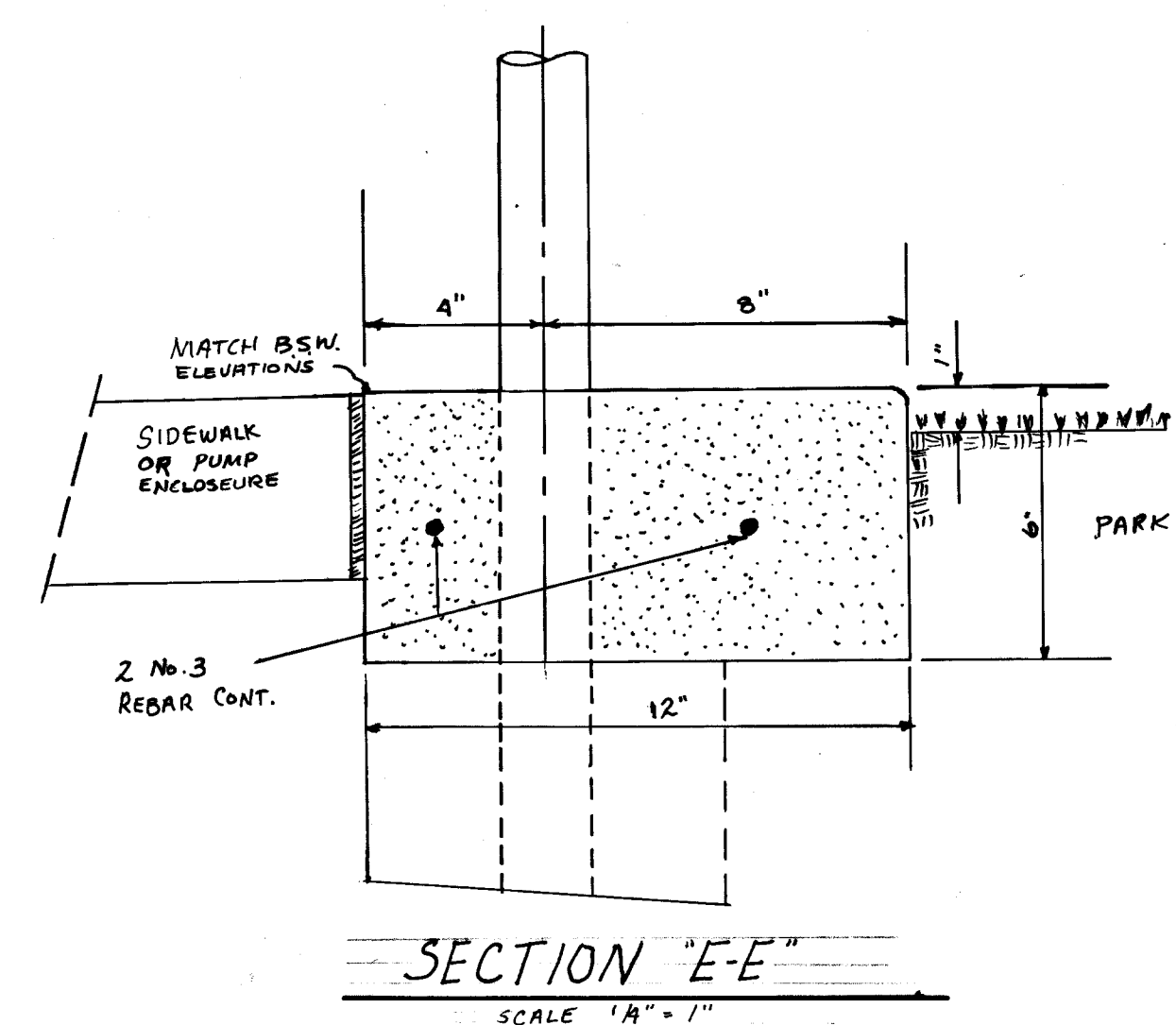


APPROXIMATE QUANTITIES — THIS SHEET

ITEM	DESCRIPTION	UNIT	QUANTITY
163.4165	6" SCH 40 PVC CONDUIT	LF	44
200.1107	DRIVEWAY REMOVAL	EA	1
200.111	REMOVE CHAINLINK FENCE	LS	
		CY	
		CY	
302.100	TYPE I GRAVEL	CY	587
302.200	TYPE II GRAVEL	CY	466
333.100	BITUMINOUS FOG SEAL	GAL	642
334.004	2" A.C. PAVEMENT SINGLE LIFT	TON	375
334.800	BITUMINOUS PRIME COAT	GAL	642
340.013	"L" TYPE CURB & GUTTER - (18")	LF	1,127
340.114	4" CONC. SIDEWALK	SF	6,404
340.016	"A" TYPE CURB - 6" X 12"	LF	122
340.226	12' WIDE COMMERCIAL DRIVEWAY	EA	1
340.319	VALLEY GUTTER (8'-0")	SF	488
340.902	12" X 6" MOWING STRIP	LF	211
410.112	6' CHAIN LINK FENCE	LF	211
410.210	12' DOUBLE SWING GATE	EA	1
410.327	27' DOUBLE DRIVE & 2 WALK GATES	EA	1



APPROVALS

Al Chubb 4/11/74
DIR. OF PARKS & CEMETERY DATE

Earl Mester 4/11/74
DIR. OF RECREATION DATE

Dave Kelle 4-11-74
DIR. OF COMM. DEVELOPMENT DATE

William A. Purvis 4-11-74
TRAFFIC ENGINEER DATE

John D. Doherty 4-12-74
CONST. DIV. ENGINEER DATE

DEP. DIR. PUBLIC WORKS DATE

CURVE DATA

NO.	DELTA	RADIUS	TANGENT	LENGTH	LOCATION
1.	90°00'00"	55.00'	55.00'	86.39'	B.C.
2.	90°00'00"	70.00'	70.00'	109.96'	E
3.	90°00'00"	83.00'	85.00'	133.52'	B.C.
4.	90°00'00"	15.00'	15.00'	23.56'	B.C.
5.	9°30'22"	379.13'	31.52'	62.90'	B.C.
6.	9°30'22"	413.12'	34.35'	68.54'	E
7.	9°30'22"	447.12'	37.17'	74.18'	B.C.
8.	80°29'38"	20.00'	16.10'	28.10'	B.C.
9.	90°00'00"	20.00'	20.00'	31.42'	B.C.
10.	36°23'46"	40.00'	13.20'	24.50'	B.C.
11.	14°28'35"	53.50'	6.79'	13.52'	E
12.	18°56'56"	53.50'	8.93'	17.69'	E
13.	63°56'28"	20.00'	12.48'	22.32'	B.C.

EXISTING UTILITIES ARE LOCATED ON THE PLANS FOR THE CONVENIENCE OF THE CONTRACTOR ONLY. THE CONTRACTOR SHALL BE RESPONSIBLE FOR PROTECTION OF UTILITIES AND THE CITY BEARS NO RESPONSIBILITY FOR UTILITIES NOT SHOWN ON THE PLANS OR NOT IN THE LOCATION SHOWN ON THE PLANS.

BENCHMARK: NO. 06129-C-9
ELEVATION 2128.51
LOCATED AT S.W. CORNER OF WASHINGTON AND TWIN LAKES

F. BK. NO. 73-2X STATION 0+00 AT BACK OF WALK EQUALS
6+81.30 TWIN LAKE STATION - CENTER LINE OF NUGGET AVE.

PROFESSIONAL ENGINEER - STATE OF NEVADA
WILLIAM A. PURVIS
CIVIL
No. 3338 NOVEMBER 1970

CONTRACT DRAWING
APR 12 1974

REVISIONS

REVISION NO.	DESCRIPTION	BY	DATE	APPROVAL

CITY OF LAS VEGAS NEVADA
DEPARTMENT OF PUBLIC WORKS
SERVICES DIVISION
LORENZI PARK - PHASE III B
PARKING LOT # 4
PLAN & PROFILES

W.O. NO.	F.B.K. NO.	DATE	DRAWING NO.
3115	73-2X		650.19-25

DES. L. BERNHARD
DR. C. TURK /LB
APPROVED BY DIRECTOR OF PUBLIC WORKS
FILE NO. 174PE74
SHEET 8 OF 10