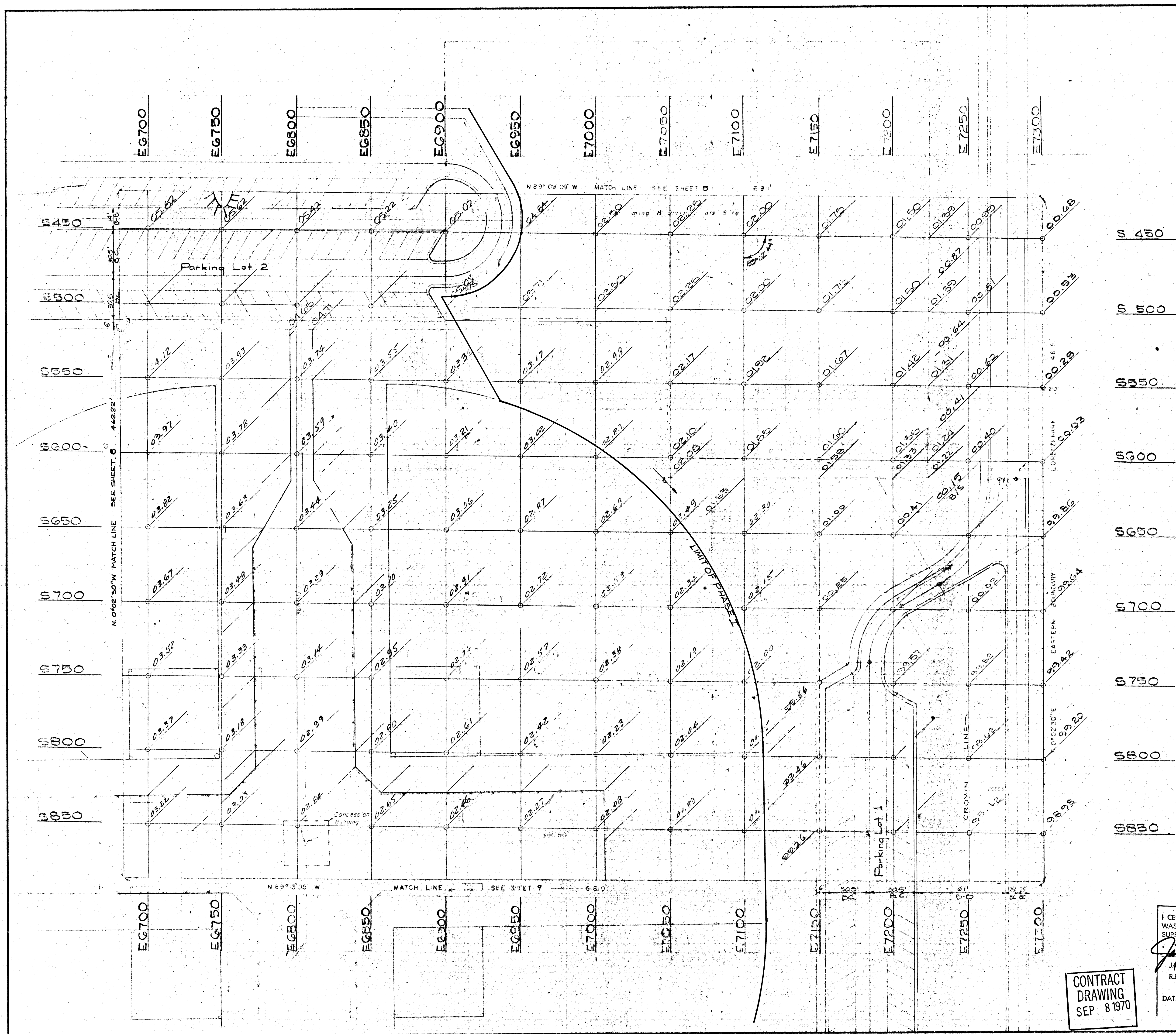
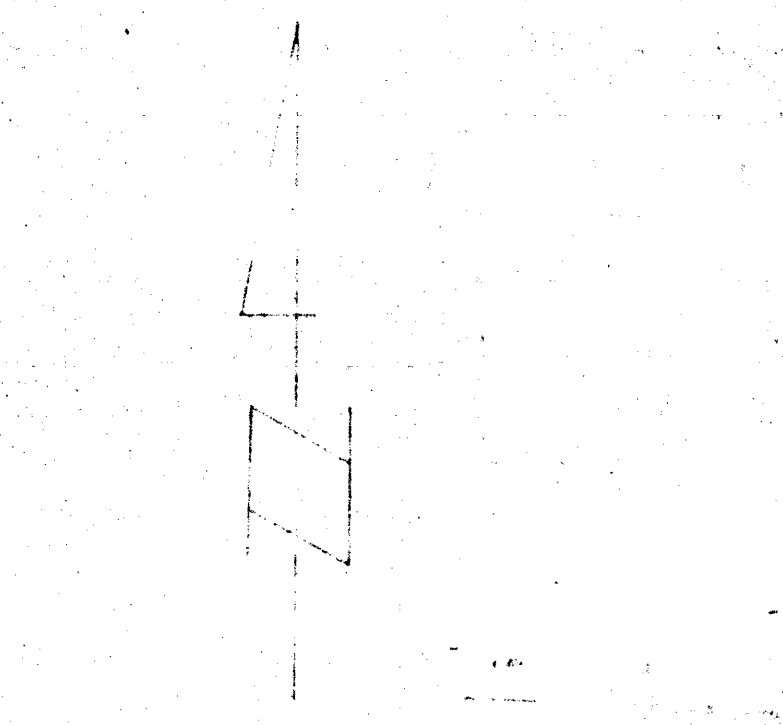


NOTES

1. All elevations shown are finished grade
2. Bench mark is 06129B20 located at the NW corner of Washington and Magnolia - Elev. 2102.49
3. See CLV dwg 650-19-10A sheets 9 & 10 for elevations on parking lot 2.
4. B/S denotes elevations at back of sidewalk.
5. Phase I 780 cr Topsoil



S 450
S 500
S 550
S 600
S 650
S 700
S 750
S 800
S 850



| | | |
|-----------|---------|-----------|
| N. W. 1/4 | NORTH | N. E. 1/4 |
| SHEET 3 | SHEET 4 | SHEET 5 |
| WEST | CENTRAL | EAST |
| | SHEET 6 | SHEET 7 |
| S. W. 1/4 | SOUTH | S. E. 1/4 |
| | SHEET 8 | SHEET 9 |

PHASE II
PHASE I

27-00014
NEV. OSD-7

CITY OF LAS VEGAS NEVADA
DEPARTMENT OF PUBLIC WORKS
SERVICES DIVISION

LORENZI PARK EASTERN 1/9
FINISH GRADING

| | | | |
|--------------------------------------|-----------------|----------|---------------|
| W.O. NO 3111 | T.B.L. NO 70-1X | DATE | DRAWING NO. |
| SEC 111-330 | SC IV | 05-26-70 | 650-19-15 |
| DES. B. HINGSTLEY | | | FILE NO. |
| DR. R. GLOUMER | | | |
| APPROVED BY DIRECTOR OF PUBLIC WORKS | | | SHEET 7 OF 23 |

I CERTIFY THAT THIS PLAN WAS PREPARED UNDER MY SUPERVISION.
Jay M. Rassler
JAY M. RASSLER
R.P.E. 1624

DATE 9/8/70

CONTRACT
DRAWING
SEP 8 1970